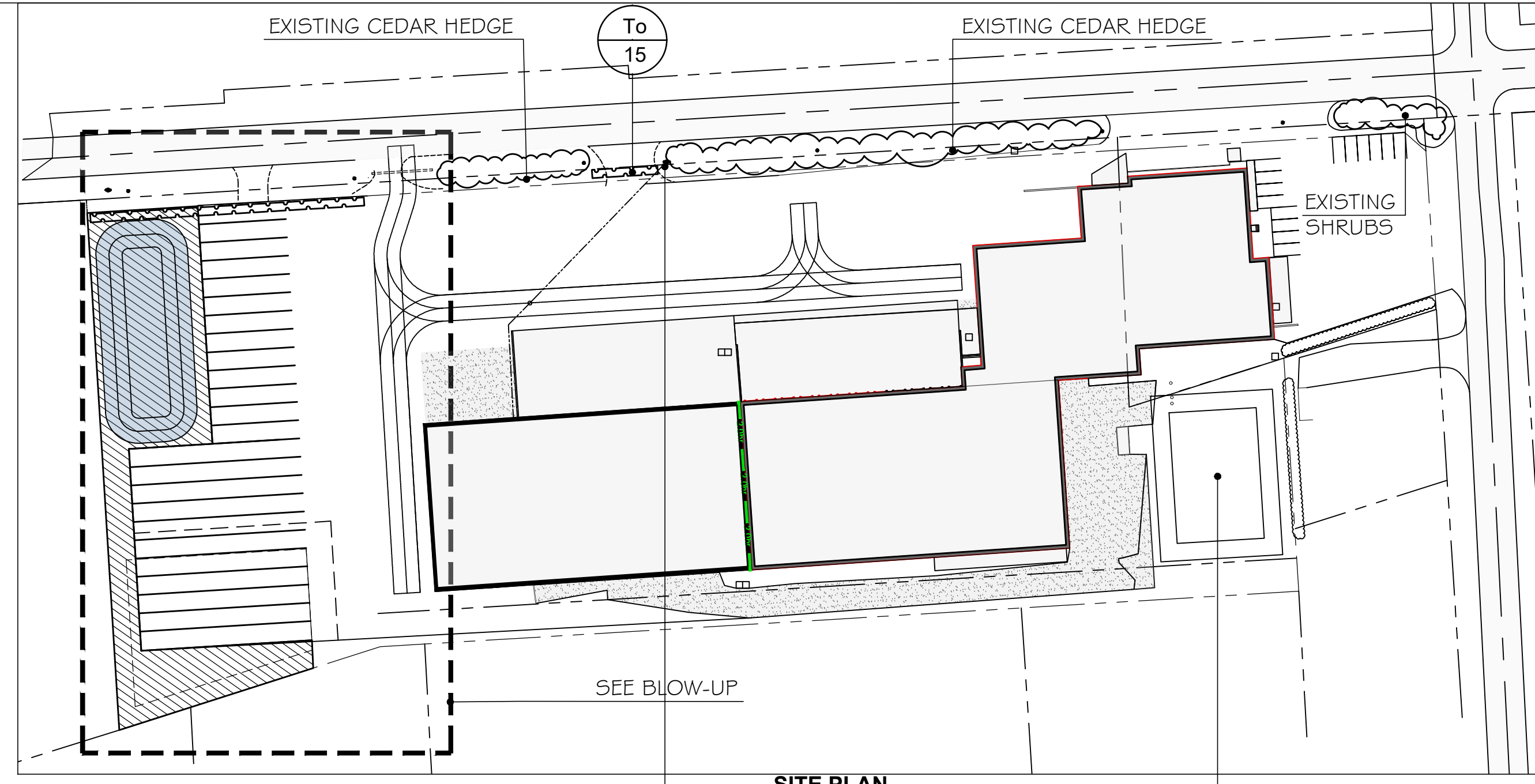


LANDSCAPE CONSTRUCTION NOTES:

- Drawings may be scaled for approximate layout only. All layout to be staked by the Contractor and approved by the Landscape Architect prior to installation.
- Plant material to be approved at source by Landscape Architect, prior to shipment to the site.
- Plantings locations may be adjusted (as directed by Landscape Architect) depending on post construction site conditions.
- Contractor to install topsoil (100mm) and sod in all disturbed areas not designated as other surface materials
- The following seed mix is to be used on the site in areas as noted, to be incorporated into a Terraced mix.
- All seeded areas to be planted with **Native Meadow Mixture** as follows:
 - New England Aster (*Aster novae-angliae*) 1%
 - Black Eyed Susan (*Rudbeckia hirta*) 20%
 - Common Milkweed (*Asclepias synaca*) 5%
 - Spike Blazing Star (*Liatris pycnotachya*) 1%
 - Wild Bergamot (*McnardaFistulosa*) 1%
 - Evening Primrose (*Oenotherabiennis*) 8%
 - Little Blue Stem (*Andropogon scoparius*) 20%
 - Indian Grass (*Sorghastumnutans*) 20%
 - Fowl Bluegrass (*Poa Palustris*) 24%
- Grass seed mixes are to be planted at 22kg/ha. Simultaneously sow Cover Crop of Common Oats for erosion control at a rate of 22kg/ha. Preferred sowing should take place between Sept 15 to early November.
- Contractor shall be responsible for coordinating with utility companies the stake out of all utility locations. All utilities to be staked in the field prior to planting stake out.
- Do not plant any trees directly above underground utilities (minimum offset = 1500mm) or under overhead utilities (minimum offset = 3000mm) or as directed by the utility or contract administrator.
- Rodent protection is to be installed around all 1 gallon trees
- Plant material collected from non-nursery source will not be accepted.
- The Landscape Architect reserves the right to reject any plant materials that have not been inspected and approved.
- The Landscape Architect can refuse to accept any plant material at the site that exhibit transportation/installation damage, poor growth habit, or disease. Plant material rejected by the Landscape Architect will be promptly removed from the site and replaced with material of acceptable quality at no additional cost to the project.
- All tree stakes are to be removed prior to the final warranty inspection of the site.

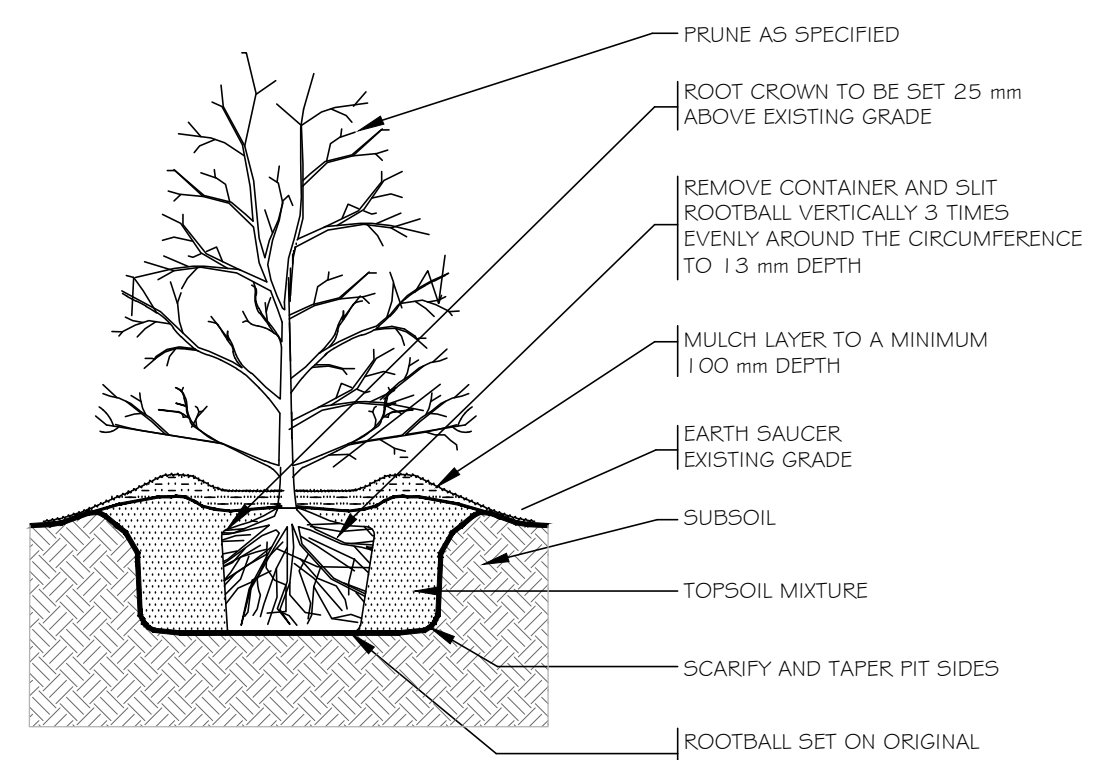


SITE PLAN
1:1000

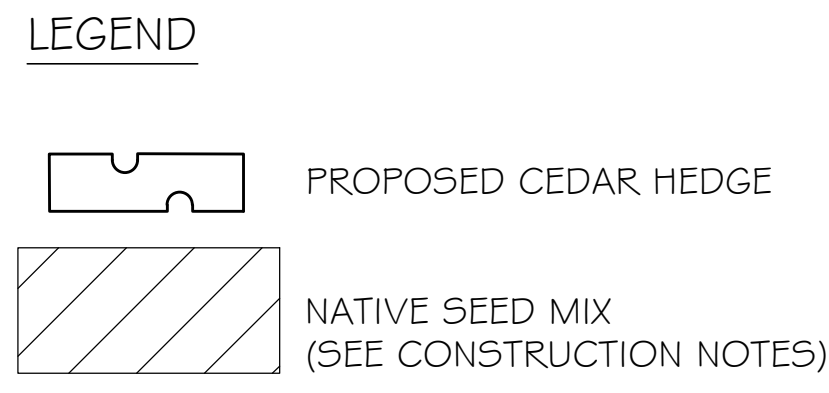
LEAVE GAP BETWEEN CEDARS FOR FIRE HYDRANT ACCESS

SEPTIC SYSTEM REPLACEMENT, RESTORE USING 'NATIVE' MEADOW SEED MIX

Vineland Growers - PLANT LIST							
W.B. = Wire Basket							
Code	Botanical Name	Common Name	Size	Qty	Root Condition	Spacing	Remarks
Coniferous Shrubs							
To	<i>Thuja occidentalis</i>	Eastern White Cedar	120cm ht.	75	5 gal pot	1.0m	Branched to the Ground



D1 TYPICAL SHRUB PLANTING DETAIL SCALE: NONE
ALL SPECIES / SIZES



OWNER'S NAME

OWNER'S SIGNATURE

TOWN OF NIAGARA-ON-THE-LAKE

LORD MAYOR

TOWN CLERK

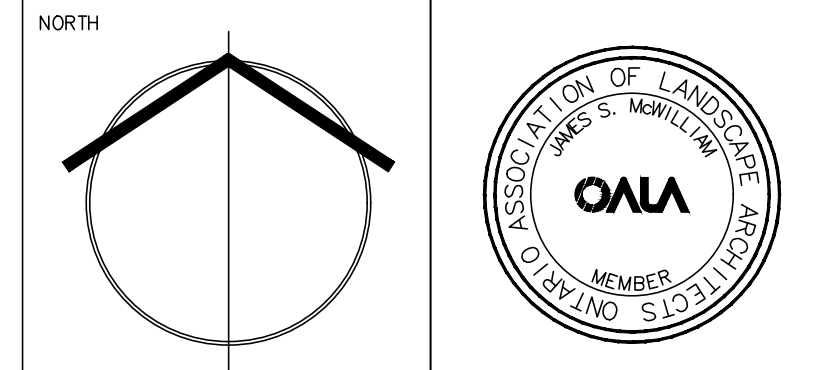
Date

NO.	DESCRIPTION	DATE
4	REVISED	SEPT. 18/25
3	REVISED	JULY 30/25
2	REVISED	MAY 27/25
1	REVISED	NOV. 29/24

JAMES McWILLIAM
LANDSCAPE ARCHITECT
jmcwilliam@jmladesign.com

PROJECT
NIAGARA ON THE LAKE EAST & WEST LINE VINELAND GROWERS

DRAWING
LANDSCAPE PLAN



SCALE: 1:250
DATE: JULY 2024
DESIGN BY: J.S.M.
DRAWN BY: T.F.G.
SHEET: **L1**