

Notes:

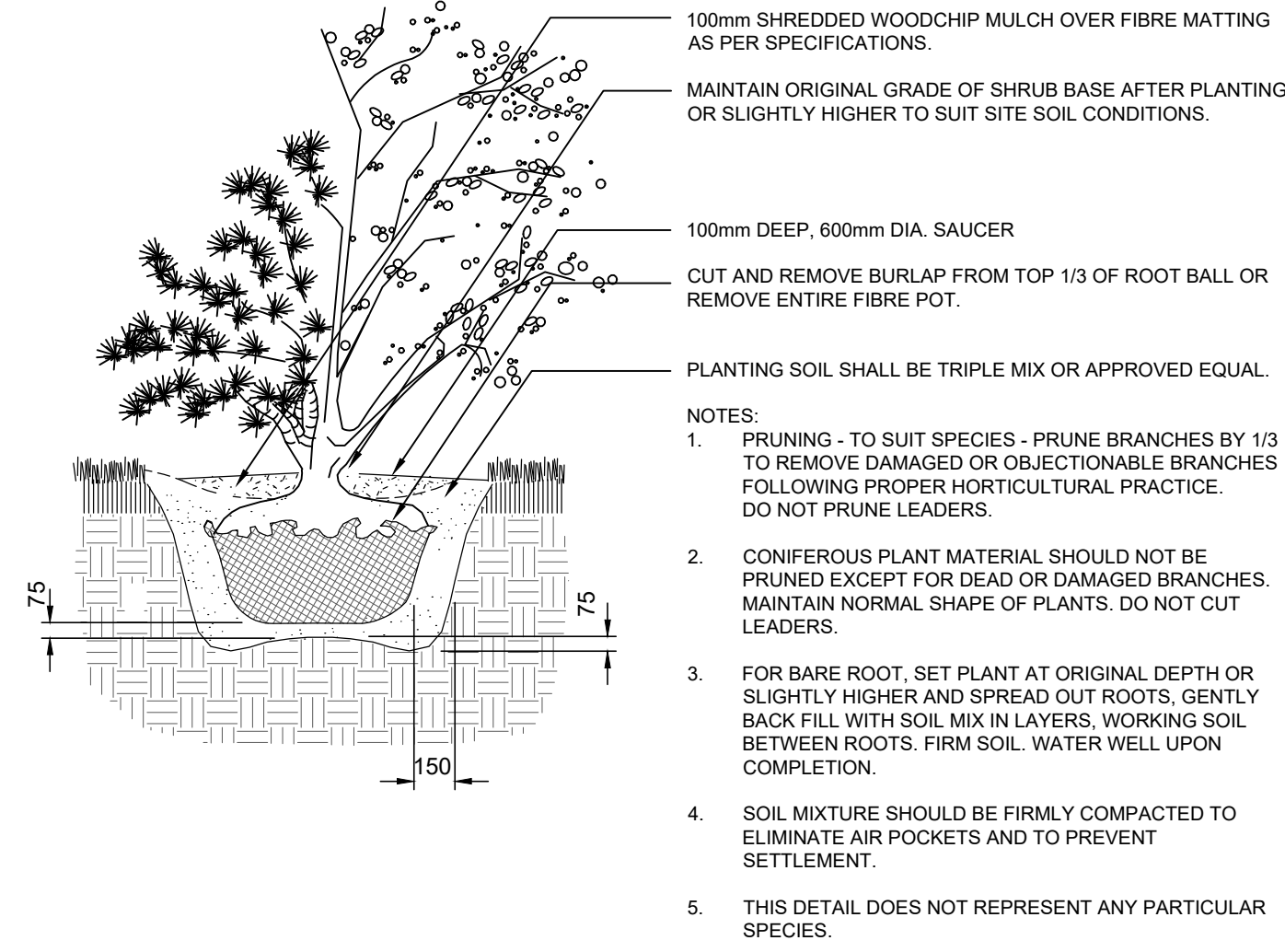
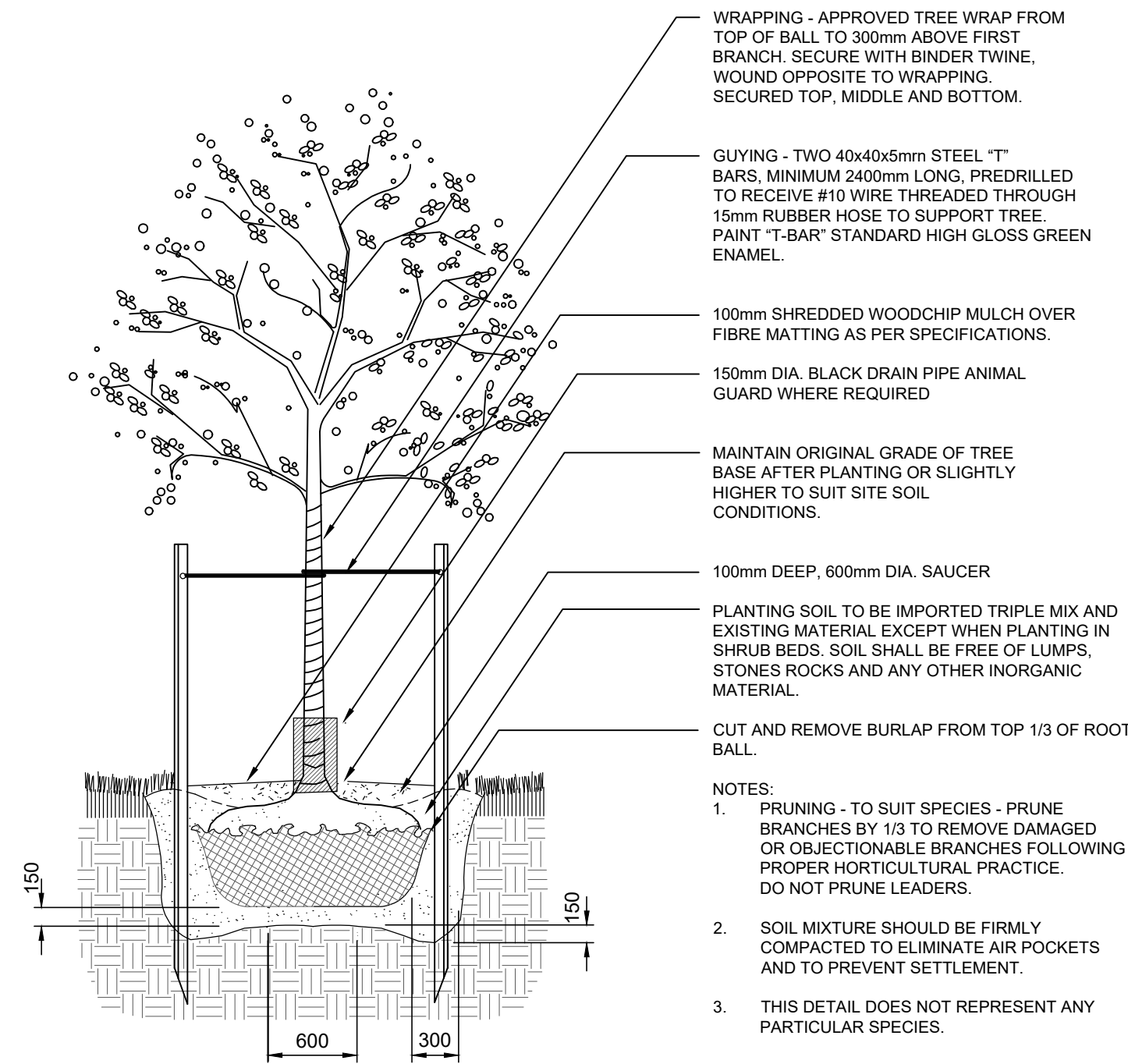
- Landscape Planting Plan to be read in conjunction with the written specifications for the project, the Site Plan, and the Grading Plan.
- Any ambiguity in the Landscape Planting Plan or accompanying details is to be reported to the Landscape Architect / Project Manager for further direction. Contractor is not to proceed in uncertainty.
- Contractor to visit site to confirm all site conditions prior to submitting bids. Discrepancies to be reported to the Landscape Architect or Project Manager for clarification.
- Limits of work to be clearly understood by the Contractor prior to any work taking place on site.
- Contractor shall supply all plants and materials in quantities sufficient to complete work shown on these drawings. Any discrepancies between quantities shown in plant list and those required by this drawing shall be reported to the Landscape Architect for direction.
- No substitutions of materials, products or quantities without approval of Landscape Architect.
- Drawings may be scaled for approximate layout (plant material location only).
- Final staking (layout) for plant material to be approved by Landscape Architect prior to excavation.
- Contractor shall relocate specified trees designated for relocation using tree spade as directed by the Landscape Architect.
- Contractor to locate and stake all underground utilities prior to any excavation work or planting on the site.
- Do not plant on weeping bed or underground utilities. Report discrepancies to Landscape Architect / Project Manager.
- Do not plant any materials in drainage swales.
- Contractor to take necessary precautions to protect all site features existing at the time of construction unless specified on drawing. Make good any damage.
- Plant materials to be obtained from members in good standing with the Ontario Nursery Trades Association.
- Plants are not to be installed or transplanted during extreme heat, drought or other undesirable conditions. Contractor to contact Landscape Architect for direction.
- Topsoil for any areas requiring sod to be neither heavy clay nor very sandy in nature. Topsoil must be free from subsoil, roots, weeds, toxic materials, and stones. Topsoil containing crabgrass or other noxious weeds is not acceptable.
- All planting beds should be supplemented with a mixture of screened topsoil, peat moss, and well rotted cow manure. These soil amendments should be thoroughly mixed with 6 parts good quality topsoil, 2 parts well rotted cow manure, and 1 part peat moss to a depth of 450mm.
- Topsoil level in planting beds to be 75mm (3") below top of concrete curbs / unit pavers to allow for placement of mulch.
- Shredded bark mulch to be uniformly applied to all planting beds, 51mm (2") thickness as noted on the Landscape Planting Plan.
- All paved surfaces to have a positive 2% slope away from structures.
- Contractor to identify with Owner and Landscape Architect any landscape maintenance requirements necessary for warranty purposes.
- All workmanship and materials to be guaranteed for one year following final inspection.
- Any unapproved deviation from these drawings is non-conforming. Quartek Group Inc. will not certify such work. All corrective work and costs to achieve compliance rest solely with the developer/contractor.

PLANT MATERIAL LIST

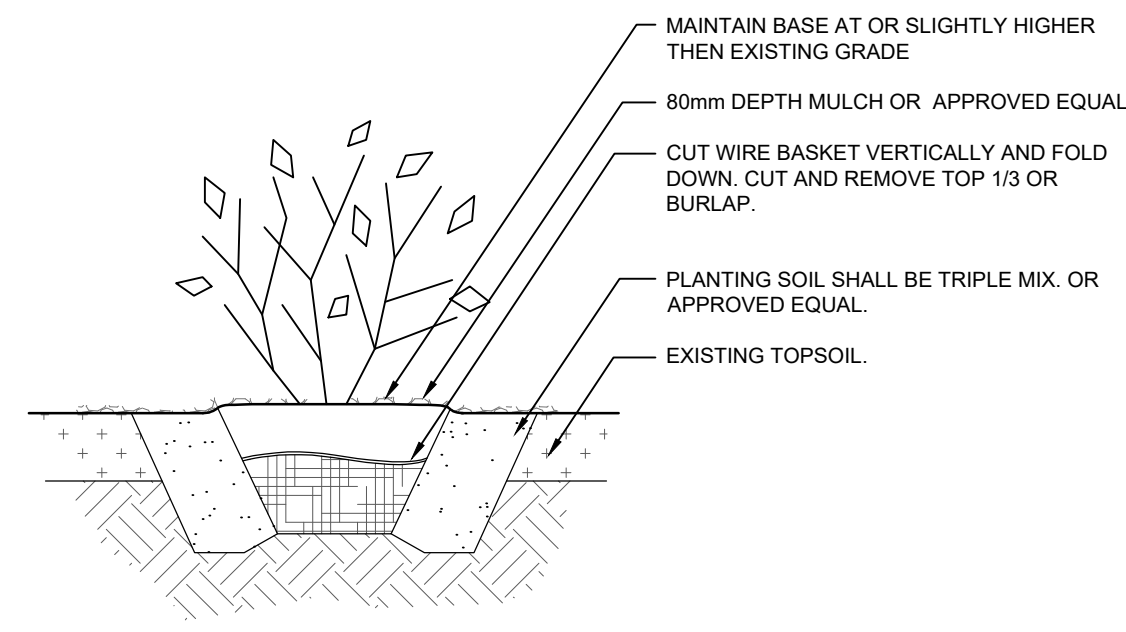
Key	Botanical Name	Common Name	#	Size
EU	<i>Euonymus alatus 'Compactus'</i>	'Compact Dwarf Burning Bush	19	100 cm, 7 gal pot
GI	<i>Ginkgo biloba 'Princeton Sentry'</i>	'Princeton Sentry' Ginkgo	5	60 mm, W.B.
RH	<i>Rhus aromatica 'Gro Low'</i>	'Gro Low' Fragrant Sumac	38	2 gal pot

LANDSCAPE NOTES

- Existing Boston Ivy - Wall Plant.
- Existing Low Wood Board Fence.
- Existing Bicycle Parking.
- Existing Gravel.
- Existing Board-on-Board Fence.
- 'Gro Low' Sumac Maintained by Trimming at Edge of Peastone Gravel.
- 'Permaloc' Aluminum Edge Restraint (5mm x 140mm (3/16" x 5.5") - Black Anodized Aluminum).
- 10mm (3/8") Peastone Gravel - 50mm (2") c/w Filter Cloth).
- Existing Hanging Planters and Planter Containers.



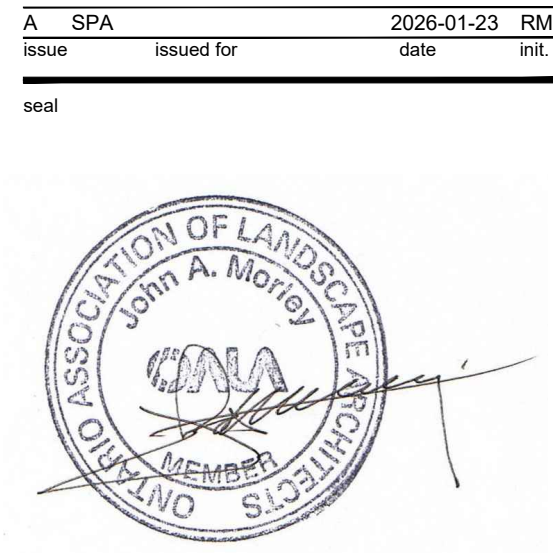
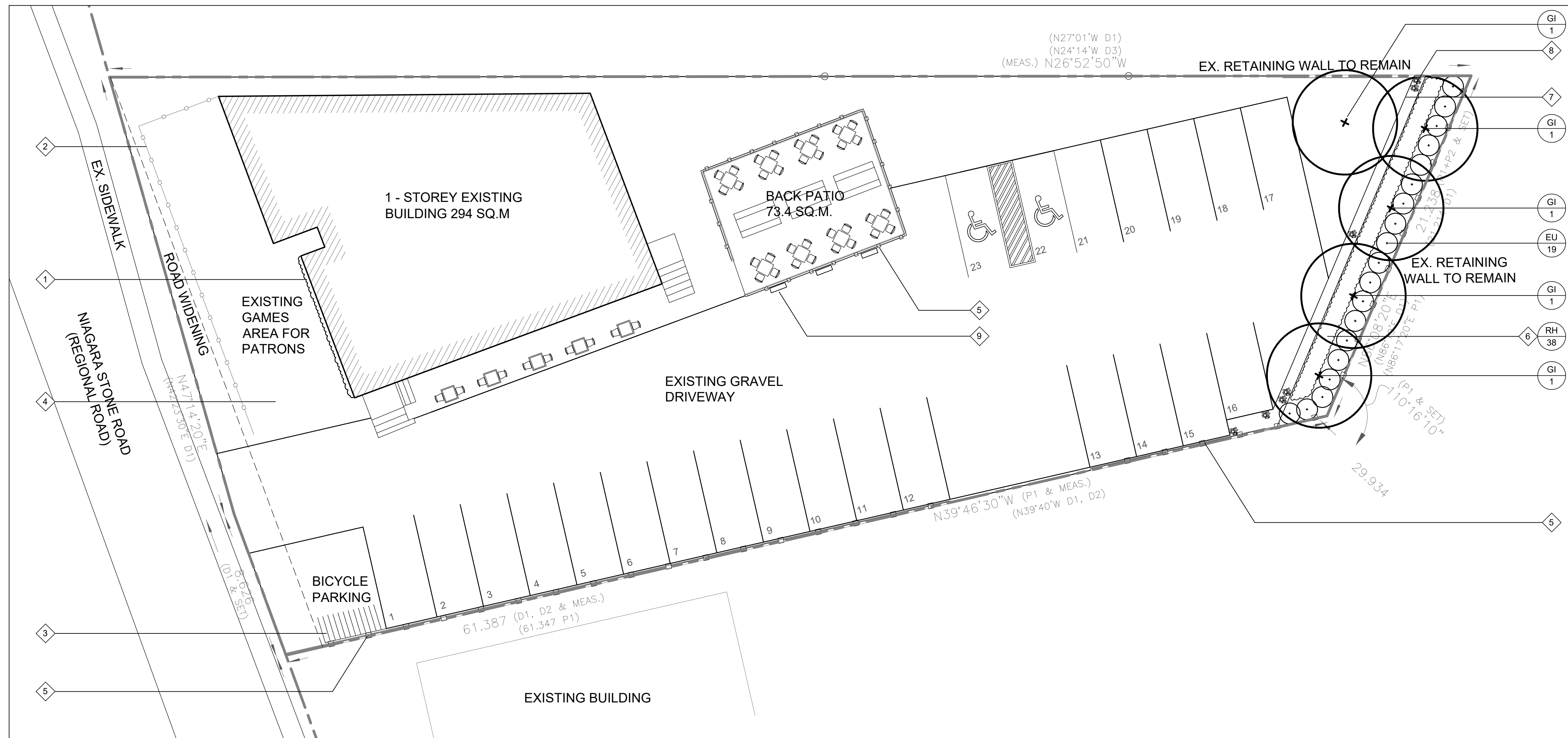
GROUND COVER PLANTING
SCALE: N.T.S.



KEY MAP



Legend



Do not scale drawings. Report any discrepancies to Quartek Group Inc. before proceeding.

Drawings must be sealed by the Architect and / or Engineer prior to the use for any building permit applications and / or government approval. Seals must be signed by the Architect and / or Engineer before drawings are used for any construction.

All construction to be in accordance with the current Ontario Building Code and all applicable Ontario regulations.

All drawings and related documents remain the property of Quartek Group Inc., all drawings are protected under copyright and under contract.



project title

SILVERSMITH

1523 NIAGARA STONE ROAD, NOTL

drawing title

LANDSCAPE PLANTING PLAN

drawn by RM designed by J.A.Morley

scale 1 : 150 date 23 Jan 2026

job number 25071 issue A

drawing number LP1