

LEGEND:

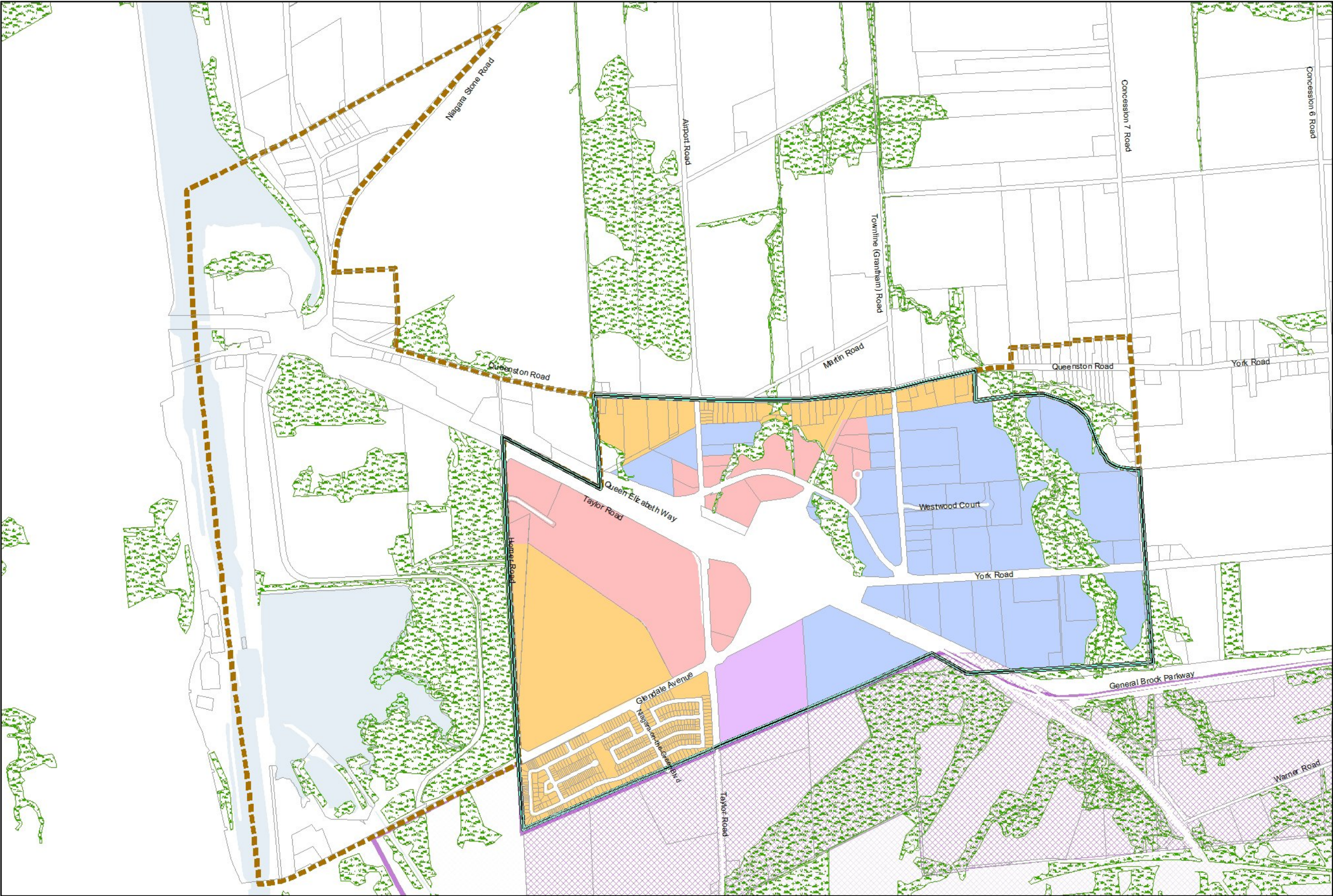
- Urban Boundary
(All lands within the Urban Boundary are Built-up Areas (2008) as defined in Section 4.3)
- Residential
- Established Residential
- Commercial
- Employment
- Community Facilities
- Major Open Space
- Conservation
- # Site Specific Policies
- Niagara Escarpment Plan Area
- Niagara Escarpment Development Control Area



Scale - 1:8,000

0 50 100 200 Meters

NOTES:
This map forms part of the Official Plan for the Town of Niagara-on-the-Lake and must be read in conjunction with the text, other schedules, and secondary plans. The boundaries and alignments of designations on this schedule are approximate and are not intended to be scaled.



LEGEND:

- Urban Boundary
- Glendale Study Area
- Residential
- Established Residential
- Commercial
- Employment
- Community Facilities
- Major Open Space
- Conservation
- Site Specific Policies
- Niagara Escarpment Plan Area
- Niagara Escarpment Development Control Area

For Growth Plan areas,
see Schedule B-7



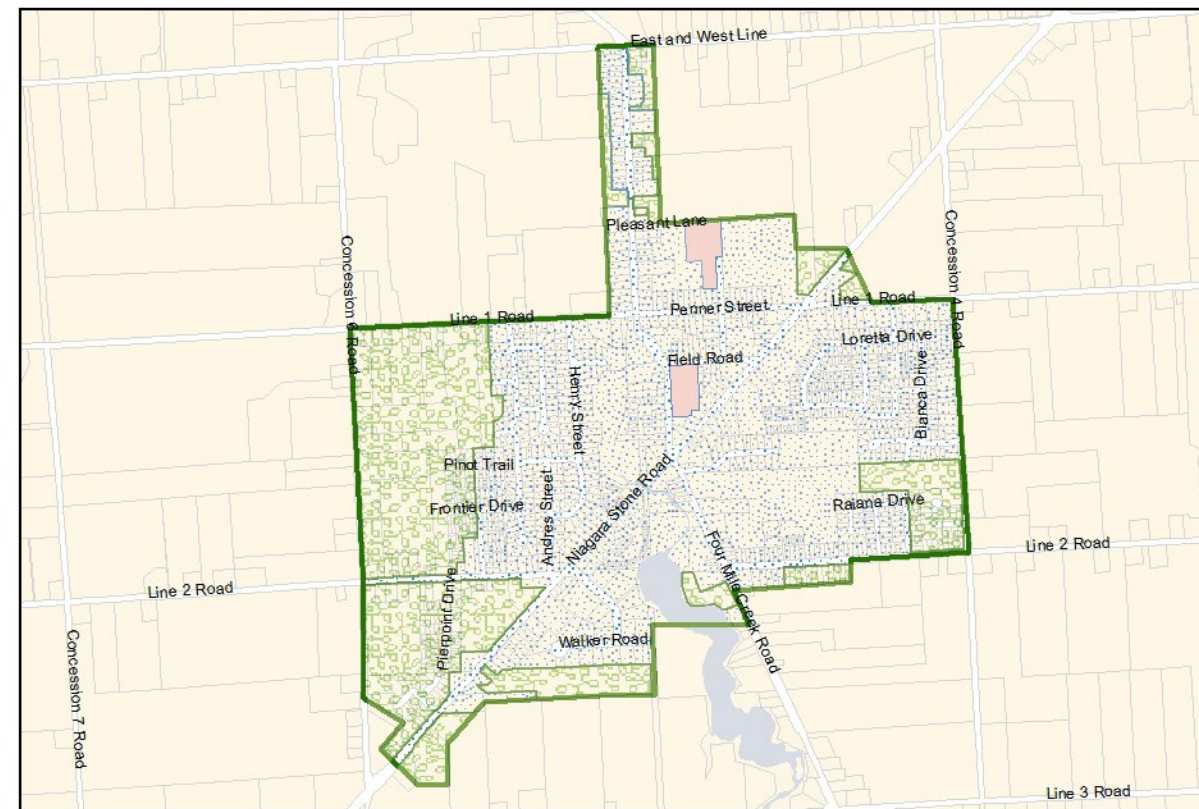
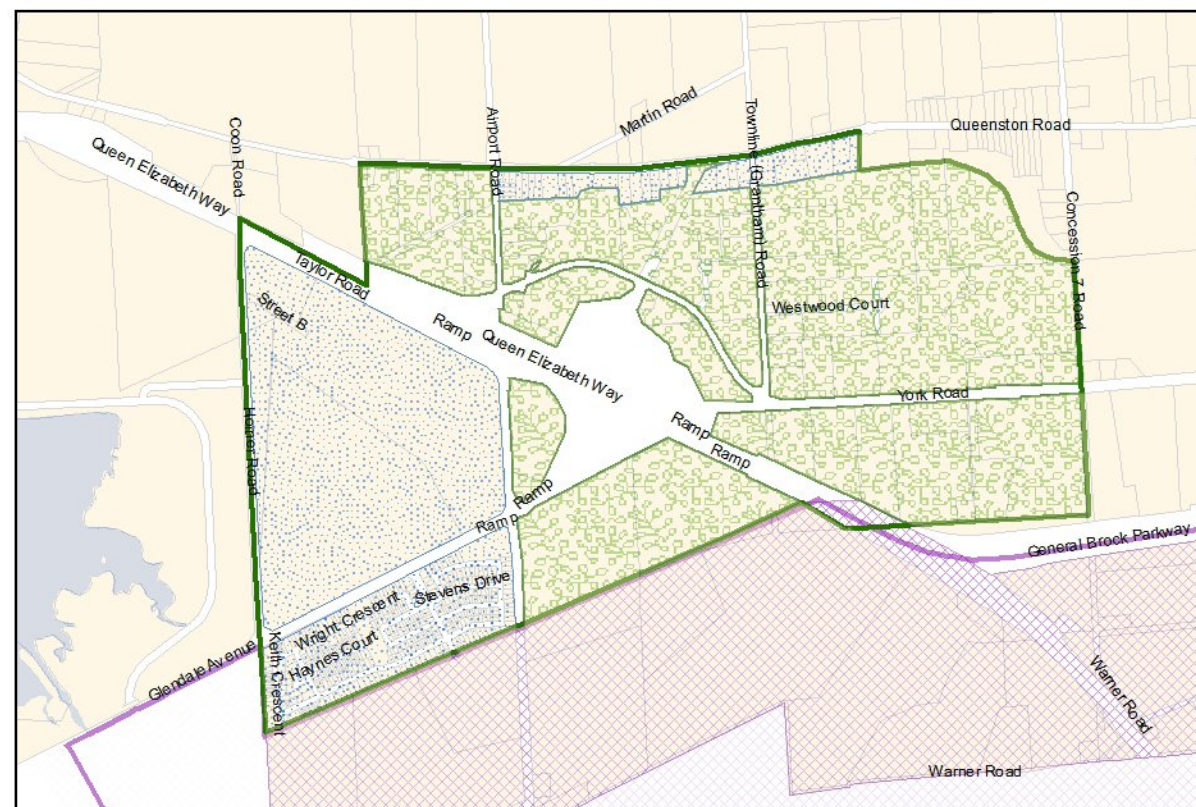
Scale - 1:17,000

0 250 500 Meters

NOTES:
This map forms part of the Official Plan for the Town of Niagara-on-the-Lake and must be read in conjunction with the text, other schedules, and secondary plans. The boundaries and alignments of designations on this schedule are approximate and are not intended to be scaled.



OLD TOWN

**VIRGIL****GLENDALE**

LEGEND:

-  Existing Urban Boundary
-  Intensification Areas
-  Greenfield Areas
-  Built Up Areas
-  Niagara Escarpment Plan Area
-  Niagara Escarpment Development Control Area



NOTES:
This map forms part of the Official Plan for the Town of Niagara-on-the-Lake and must be read in conjunction with the text, other schedules, and secondary plans. The boundaries and alignments of designations on this schedule are approximate and are not intended to be scaled.