

LEGEND:

- Municipal Boundary
- Urban Areas
- Glendale Study Area
- Niagara District Airport Lands
- Airport Study Area
- Niagara Escarpment Plan Area
- Niagara Escarpment Development Control Area
- Protected Countryside



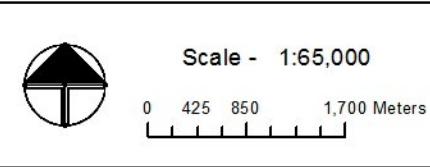
Scale - 1:65,000

0 425 850 1,700 Meters

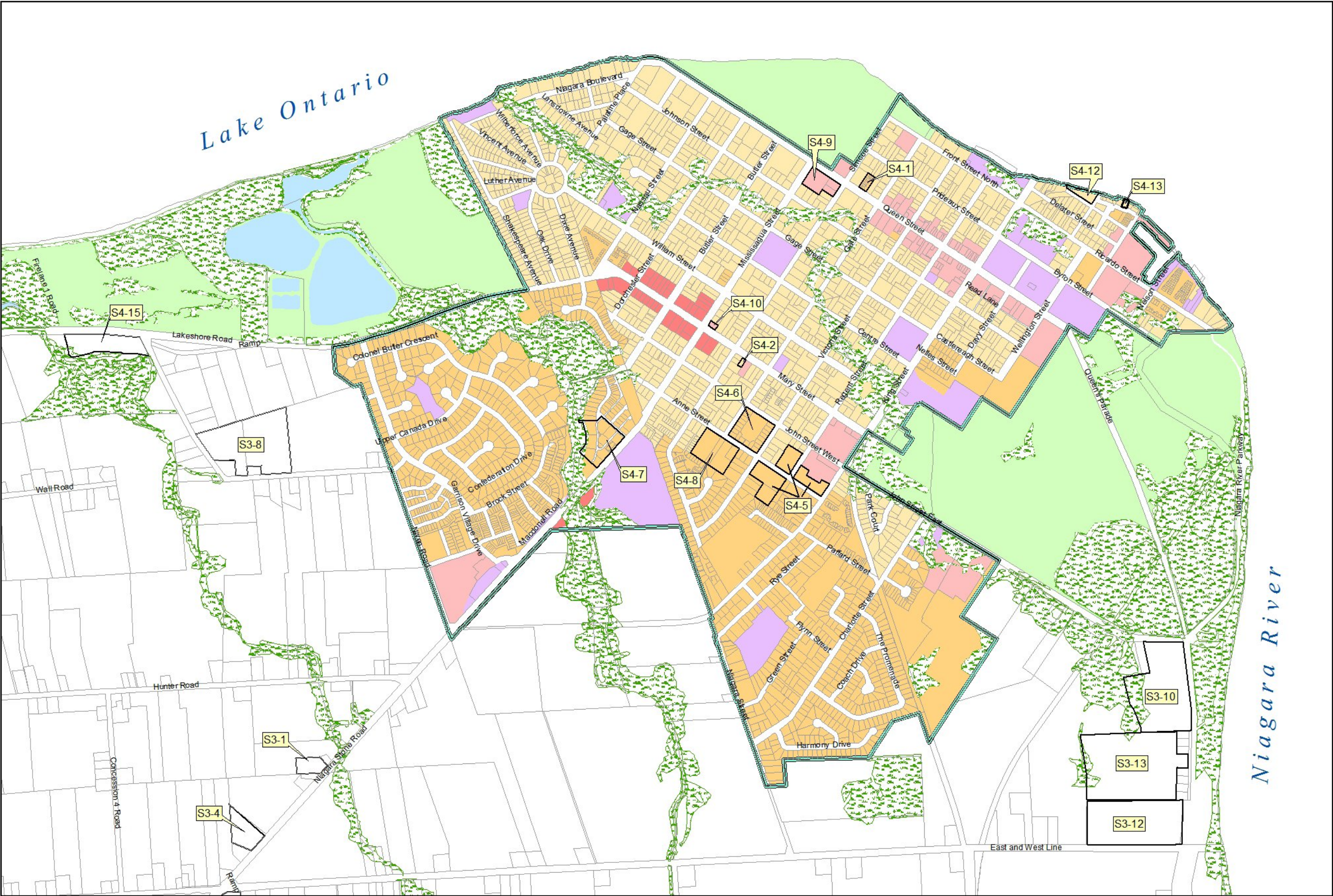
NOTES:
This map forms part of the Official Plan for the Town of Niagara-on-the-Lake and must be read in conjunction with the text, other schedules, and secondary plans. The boundaries and alignments of designations on this schedule are approximate and are not intended to be scaled.



- LEGEND:**
- Municipal Boundary
 - Urban Areas
 - Glendale Study Area
 - Niagara Stone Road Special Policy Area
 - Specialty Agriculture
 - Site Specific Policies
 - Conservation
 - Niagara District Airport Lands
 - Airport Study Area
 - Licensed Aggregate Operations
 - Niagara Escarpment Plan Area
 - Niagara Escarpment Development Control Area



NOTES:
This map forms part of the Official Plan for the Town of Niagara-on-the-Lake and must be read in conjunction with the text, other schedules, and secondary plans. The boundaries and alignments of designations on this schedule are approximate and are not intended to be scaled.



LEGEND:

- Urban Boundary
- Residential
- Established Residential
- Mixed Use
- Commercial
- Employment
- Community Facilities
- Major Open Space
- Conservation
- # Site Specific Policies

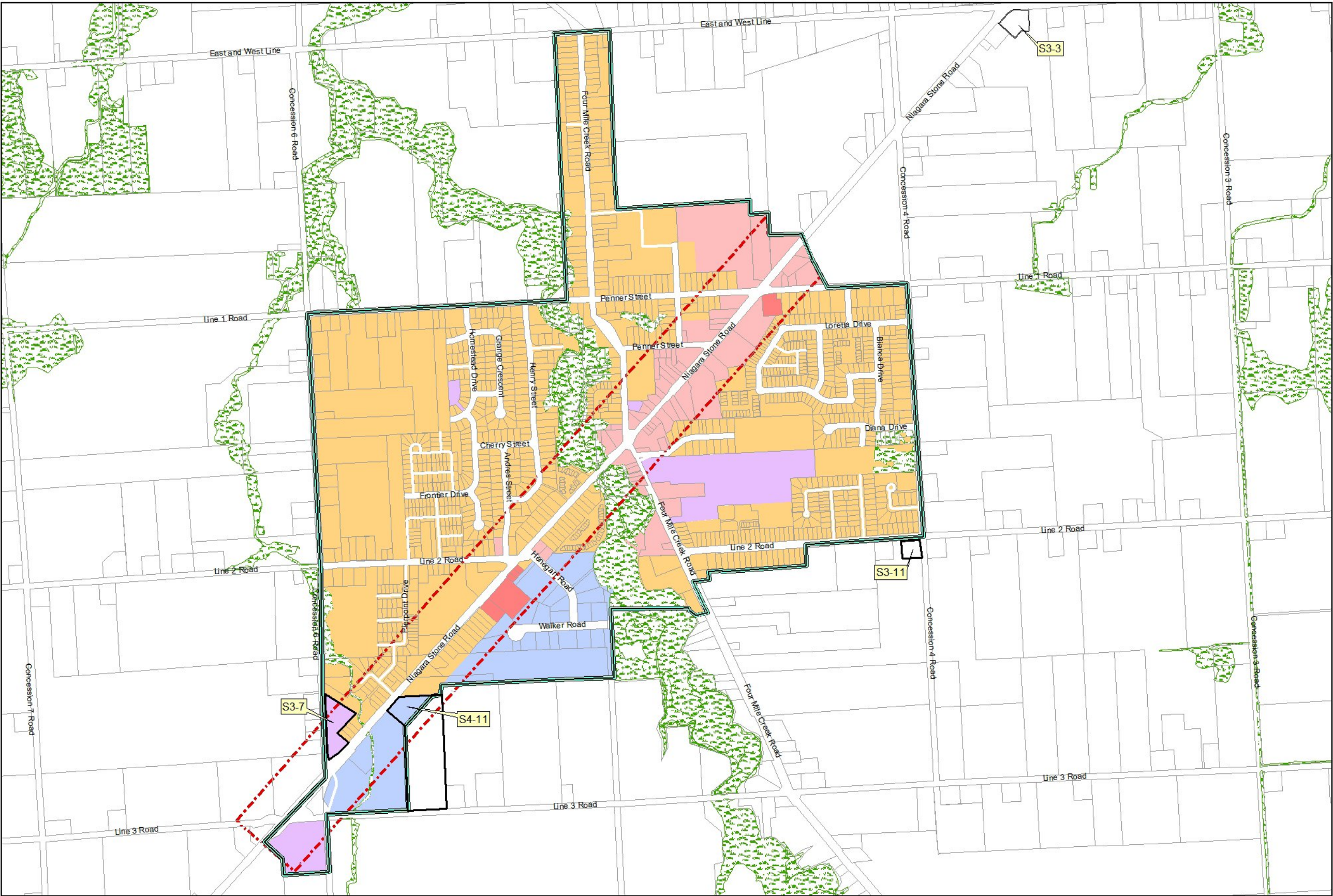
For Growth Plan areas,
see Schedule B-7



Scale - 1:15,000

0 100 200 400 Meters

NOTES:
This map forms part of the Official Plan for the Town of Niagara-on-the-Lake and must be read in conjunction with the text, other schedules, and secondary plans. The boundaries and alignments of designations on this schedule are approximate and are not intended to be scaled.



LEGEND:

- Urban Boundary
- Residential
- Established Residential
- Mixed Use
- Commercial
- Employment
- Mixed Use
- Community Facilities
- Major Open Space
- Conservation
- # Site Specific Policies
- Special Study Areas

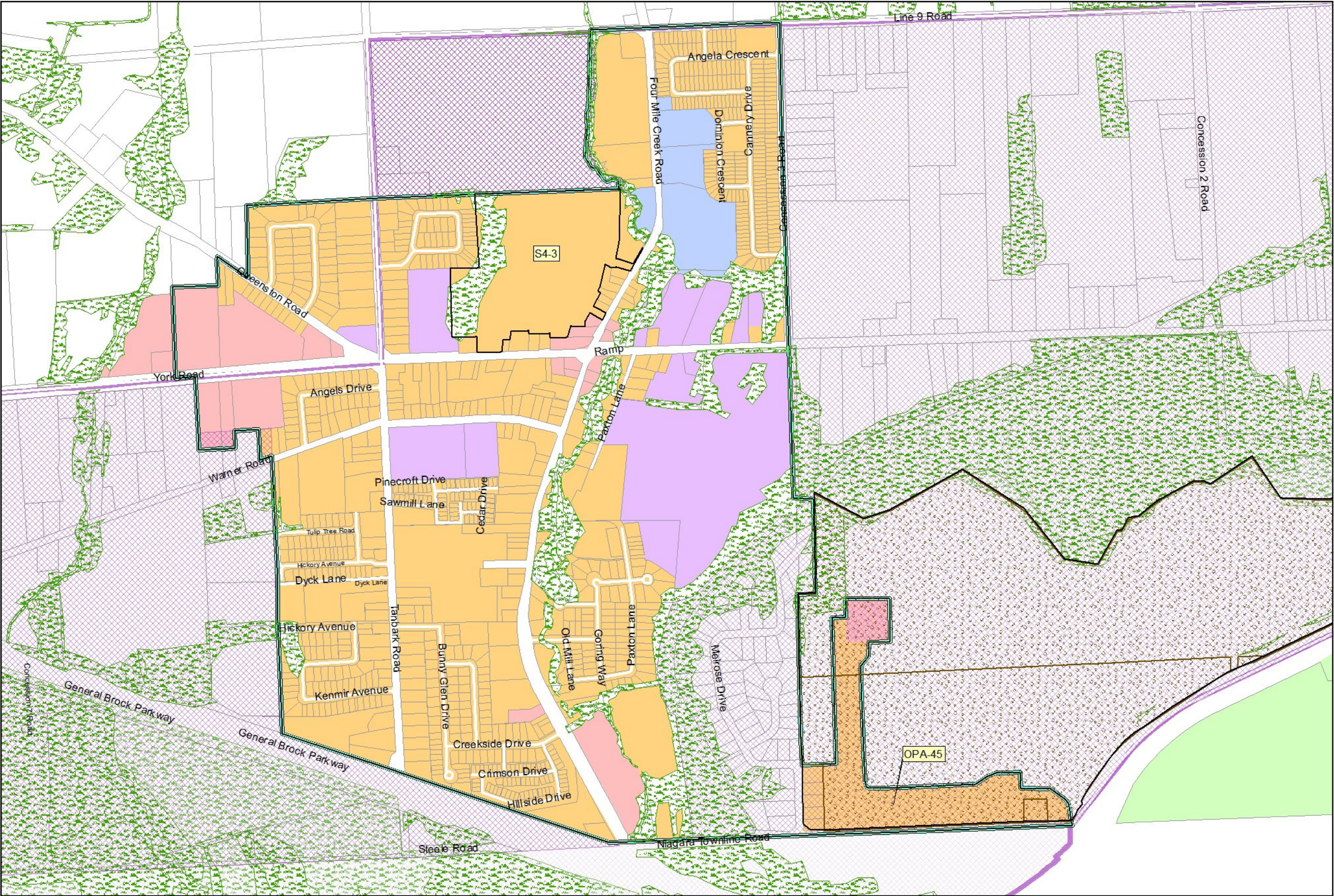
For Growth Plan areas,
see Schedule B-7



Scale - 1:13,000

0 87.5 175 350 Meters

NOTES:
This map forms part of the Official Plan for the Town of Niagara-on-the-Lake and must be read in conjunction with the text, other schedules, and secondary plans. The boundaries and alignments of designations on this schedule are approximate and are not intended to be scaled.



LEGEND:

- Urban Boundary
- (All lands within the Urban Boundary are Built-up Areas (2008) as defined in Section 4.3)
- Residential
- Established Residential
- Commercial
- Employment
- Community Facilities
- Major Open Space
- Conservation
- Aggregate Resources
- # Site Specific Policies
- Niagara Escarpment Plan Area
- Niagara Escarpment Development Control Area



Scale - 1:10,000

0 65 130 260 Meters

NOTES:
This map forms part of the Official Plan for the Town of Niagara-on-the-Lake and must be read in conjunction with the text, other schedules, and secondary plans. The boundaries and alignments of designations on this schedule are approximate and are not intended to be scaled.