

**LEGEND:**

-  Municipal Boundary
-  Greenbelt Boundary
-  Niagara Escarpment Plan Area
-  Niagara Escarpment Development Control Area
-  Protected Countryside
-  Niagara District Airport Lands
-  Settlement Area
-  Ontario Power Generation Lands

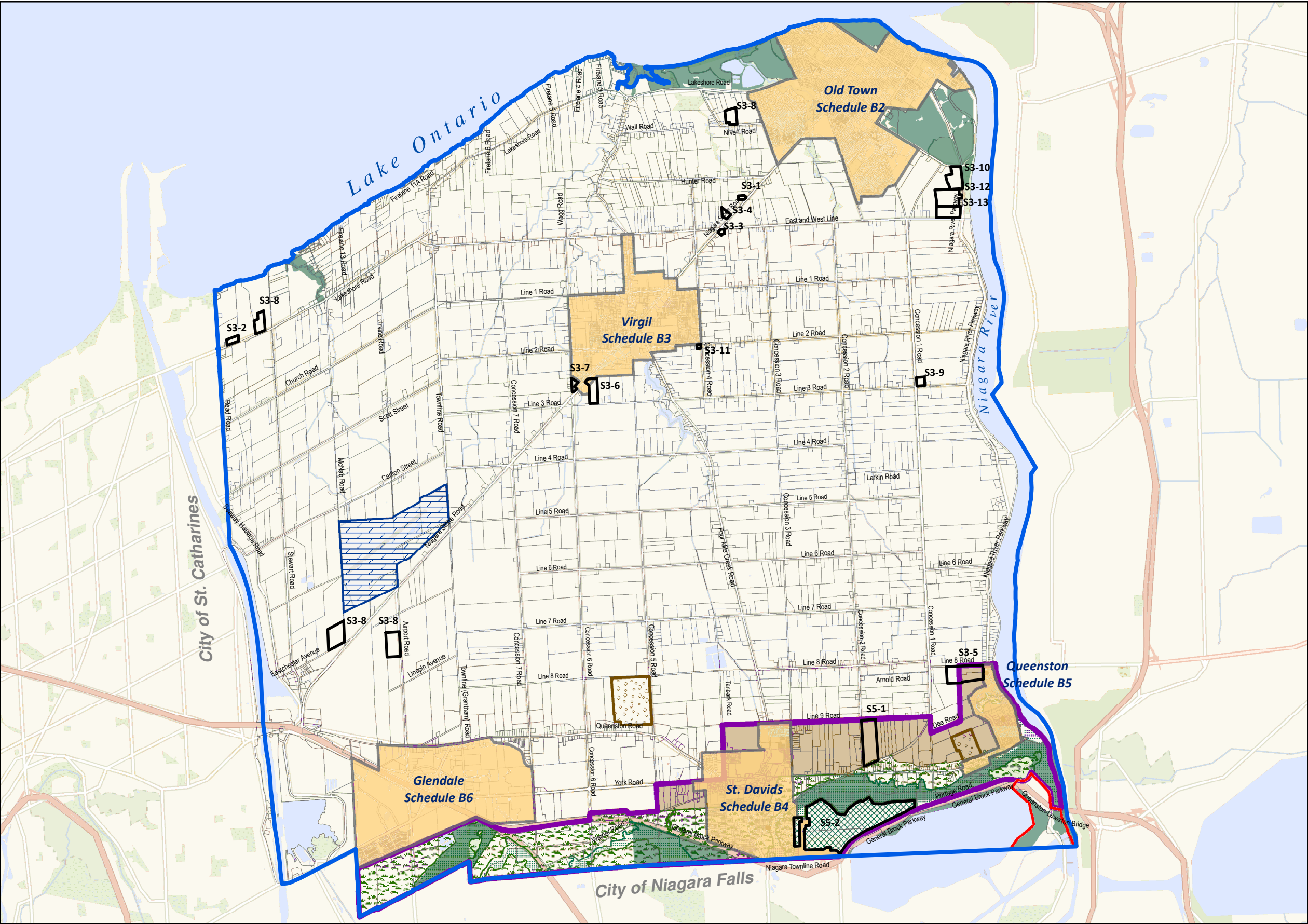


Scale - 1:60,000

NOTES:

This map forms part of the Official Plan for the Town of Niagara-on-the-Lake and must be read in conjunction with the text, other schedules, and secondary plans. The boundaries and alignments of designations on this schedule are approximate and are not intended to be scaled.





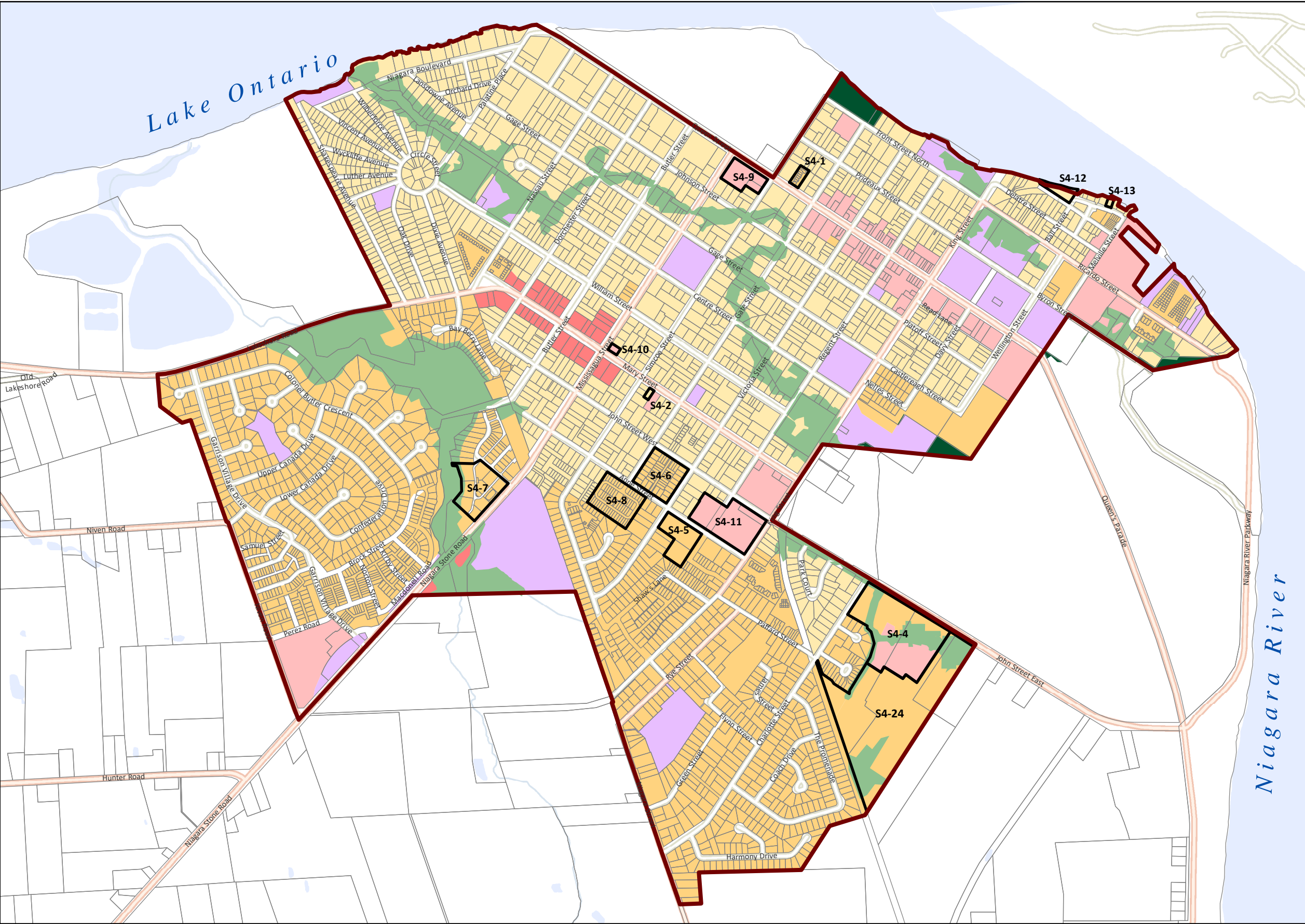
**LEGEND:**

- Municipal Boundary
- Settlement Area (see Schedules B2-B6)
- Niagara Escarpment Plan Area
  - Escarpment Natural Area
  - Escarpment Protection Area
  - Escarpment Rural Area
  - Escarpment Recreation Area
- Protected Countryside
- Specialty Crop Lands
- Niagara District Airport Lands
- Major Open Space
- Licensed Aggregate Operations
- Site Specific Policies
- Ontario Power Generation Lands

Scale - 1:60,000

**NOTES:**  
 This map forms part of the Official Plan for the Town of Niagara-on-the-Lake and must be read in conjunction with the text, other schedules, and secondary plans. The boundaries and alignments of designations on this schedule are approximate and are not intended to be scaled.





**Niagara-on-the-Lake**  
EST. 1781

**LEGEND:**

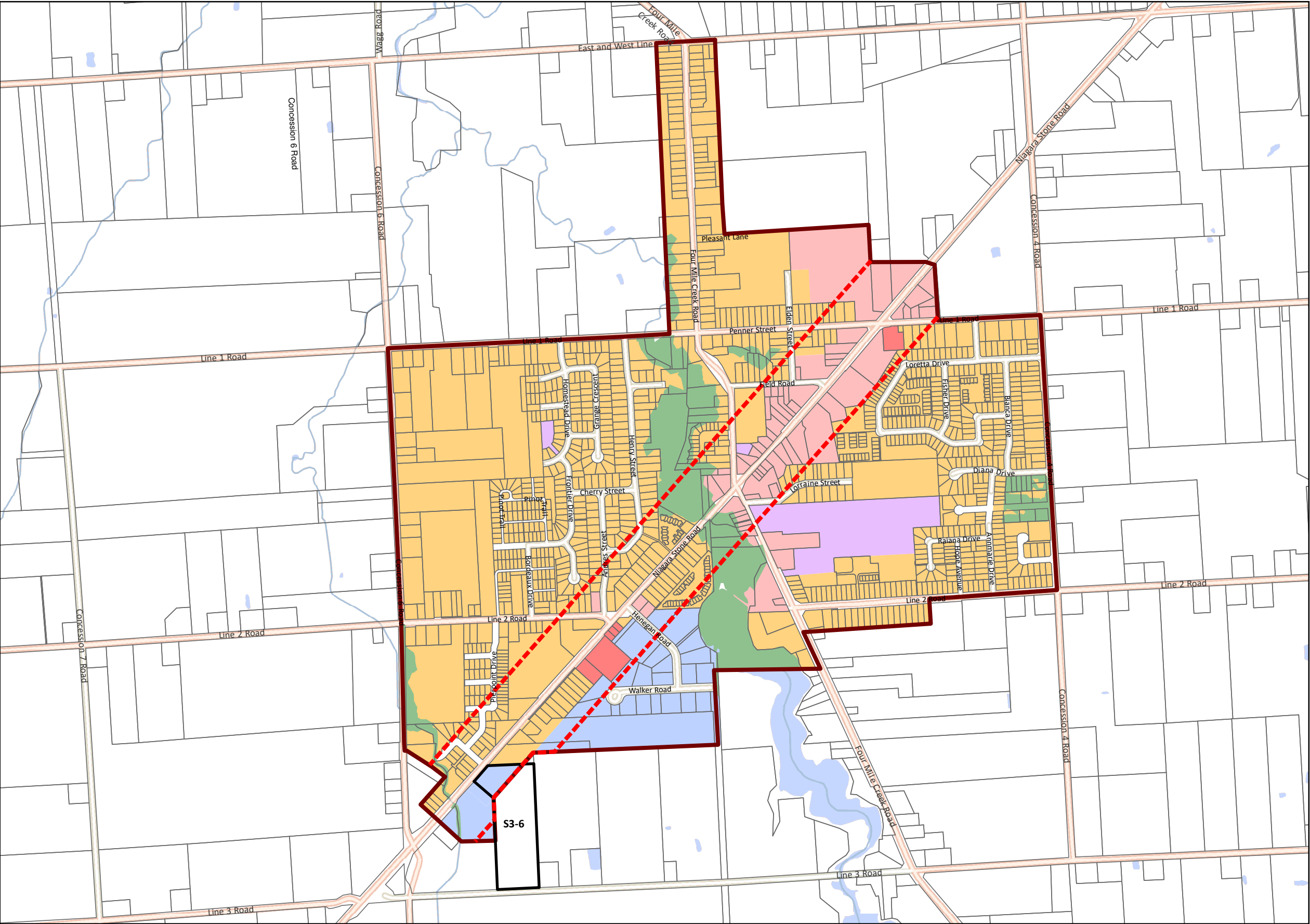
- Settlement Area
- Residential
- Established Residential
- Mixed Use
- Commercial
- Employment
- Community Facilities
- Major Open Space
- Conservation
- Site Specific Policies

For Growth Plan areas, see Schedule B-7

Scale - 1:12,500

0 125 250 500 Meters

**NOTES:**  
This map forms part of the Official Plan for the Town of Niagara-on-the-Lake and must be read in conjunction with the text, other schedules, and secondary plans. The boundaries and alignments of designations on this schedule are approximate and are not intended to be scaled.



**LEGEND:**

- Settlement Area
- Residential
- Established Residential
- Mixed Use
- Commercial
- Employment
- Community Facilities
- Major Open Space
- Conservation
- # Site Specific Policies
- Niagara Stone Road Corridor

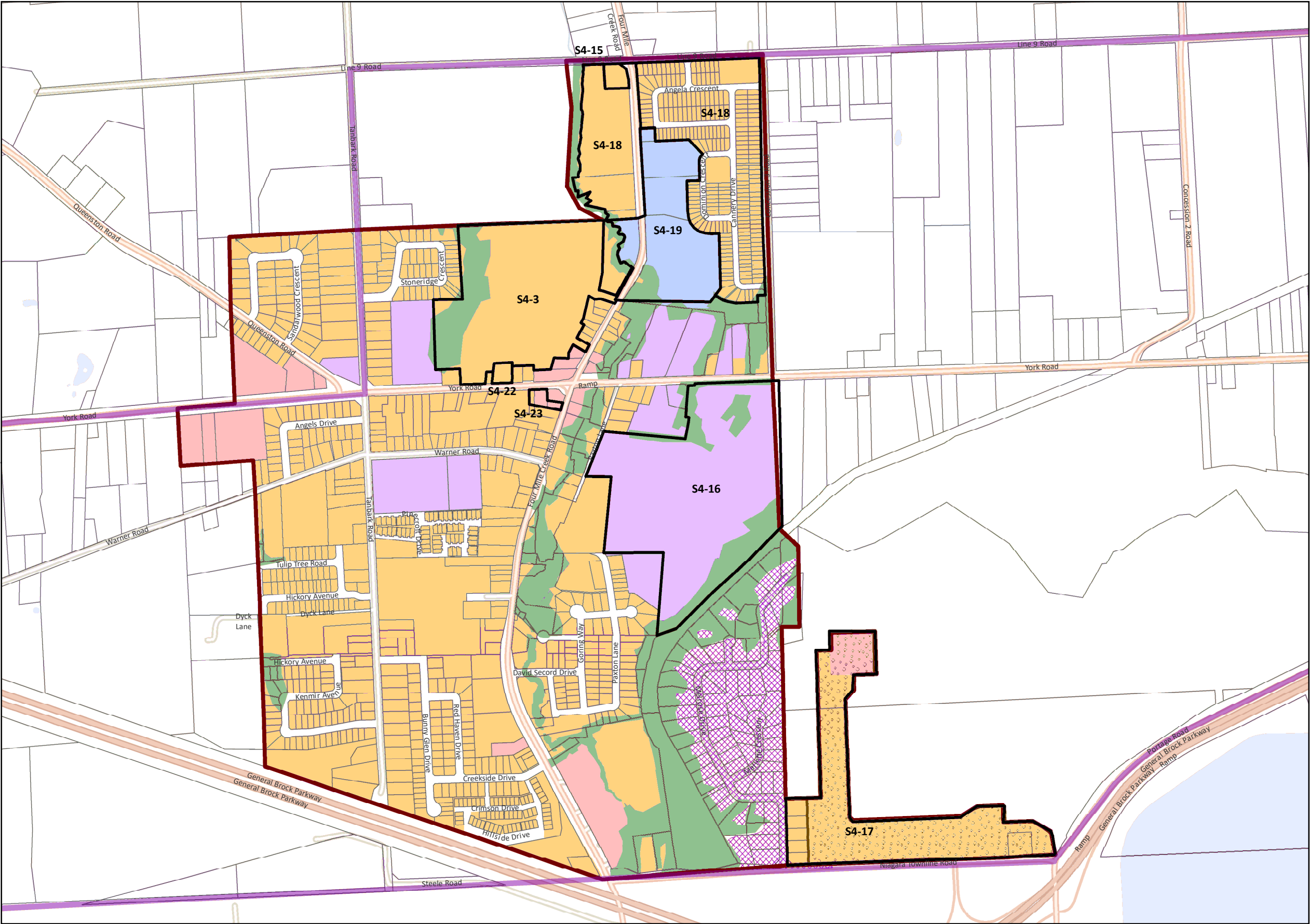
*For Growth Plan areas,  
see Schedule B-7*

Scale - 1:12,000

0
75
150
300
450 Meters

**NOTES:**  
 This map forms part of the Official Plan for the Town of Niagara-on-the-Lake and must be read in conjunction with the text, other schedules, and secondary plans. The boundaries and alignments of designations on this schedule are approximate and are not intended to be scaled.







**LEGEND:**

-  Settlement Area  
(All lands within the Settlement Area are Built-up Areas (2008) as defined in Section 4.3)
-  Residential
-  Established Residential
-  Mixed Use
-  Commercial
-  Employment
-  Community Facilities
-  Major Open Space
-  Conservation
-  Aggregate Resources
-  Site Specific Policies
-  Niagara Escarpment Plan Area
-  Niagara Escarpment Development Control Area

*For Growth Plan areas,  
see Schedule B-7*

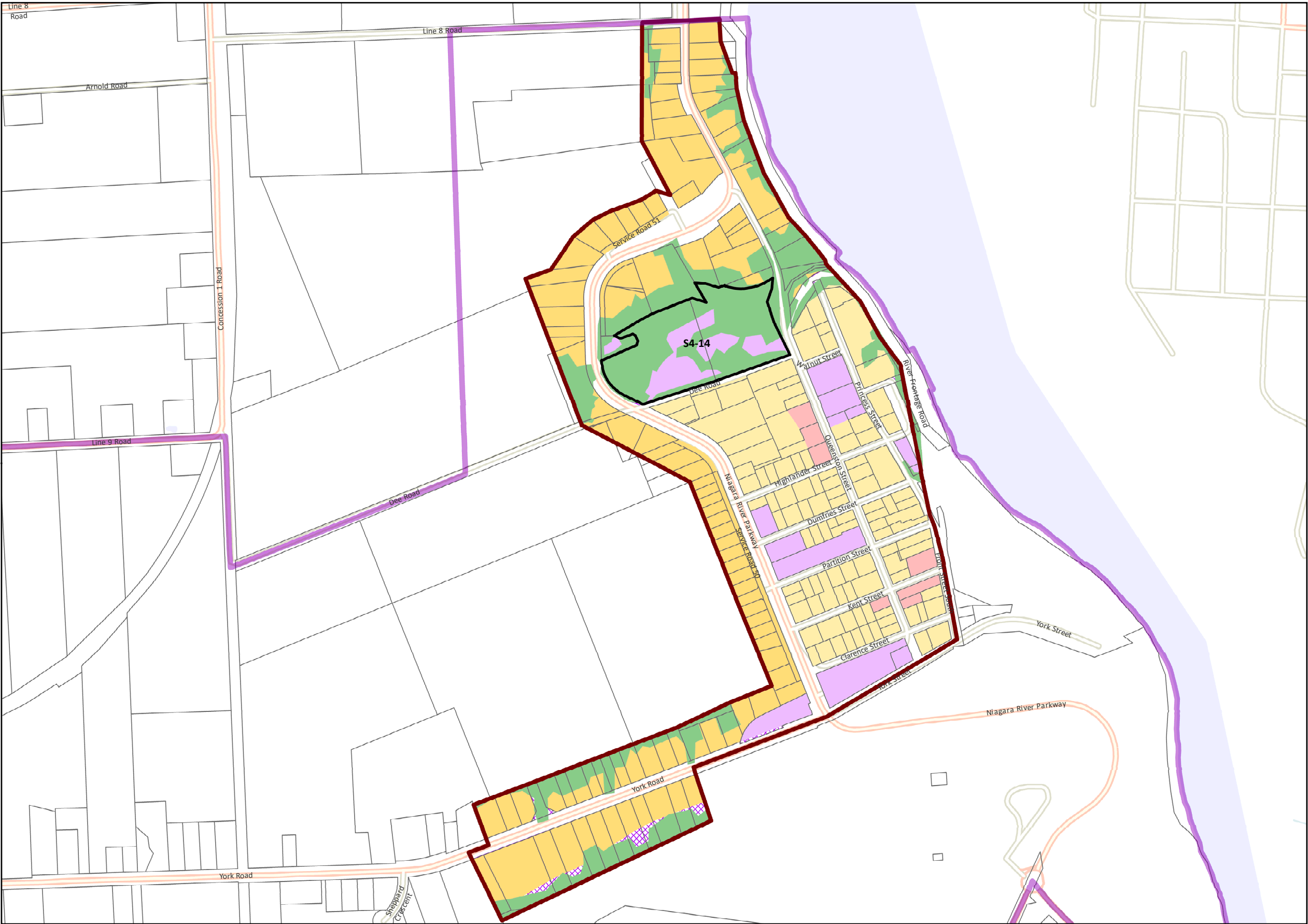



Scale - 1:10,000

0 50 100 200 300 Meters
















**NOTES:**  
This map forms part of the Official Plan for the Town of Niagara-on-the-Lake and must be read in conjunction with the text, other schedules, and secondary plans. The boundaries and alignments of designations on this schedule are approximate and are not intended to be scaled.

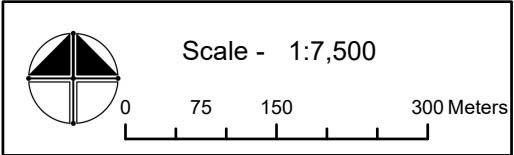




**LEGEND:**

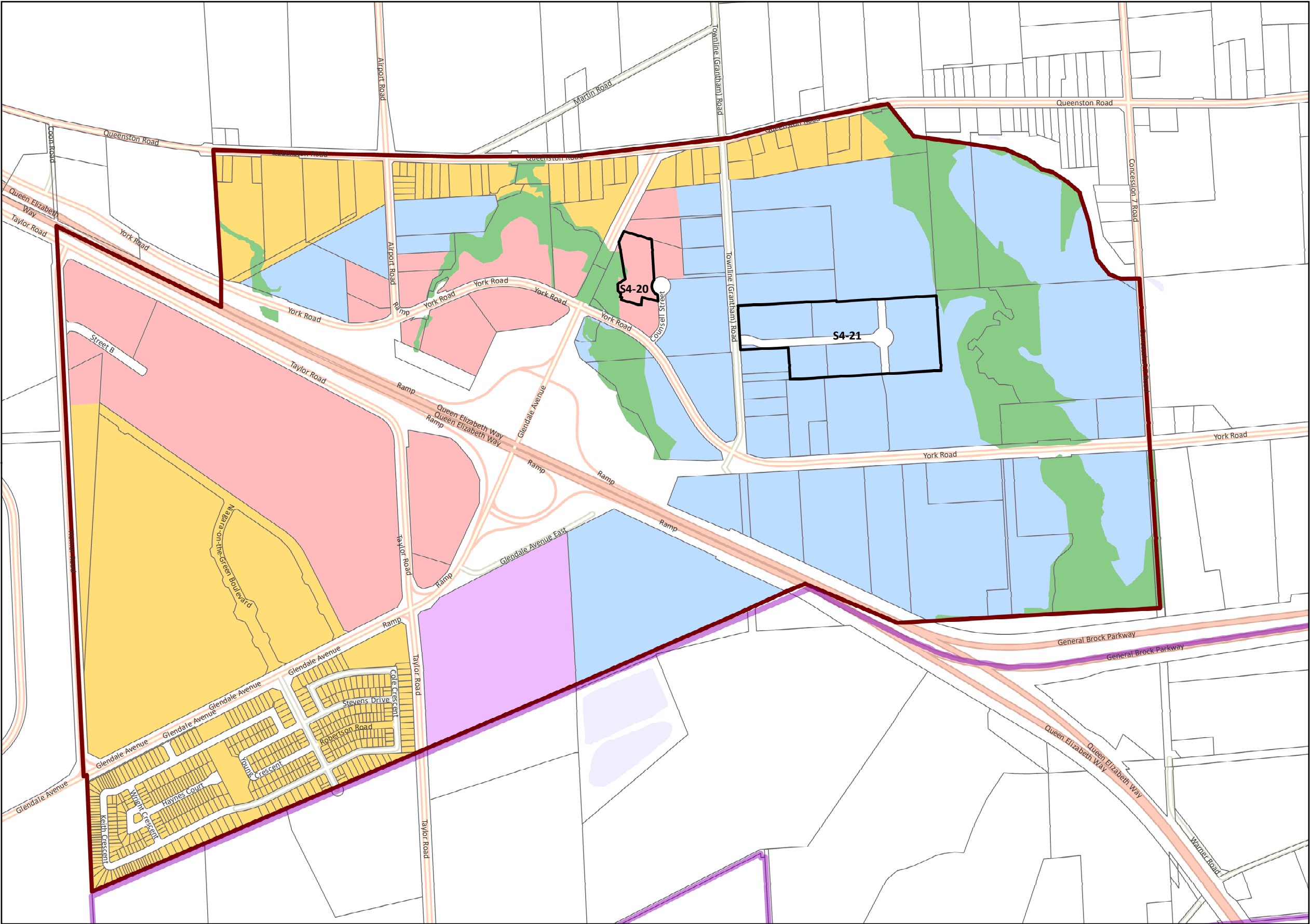
- 
**Settlement Area**  
 (All lands within the Settlement Area are Built-up Areas (2008) as defined in Section 4.3)
- 
**Residential**
- 
**Established Residential**
- 
**Mixed Use**
- 
**Commercial**
- 
**Employment**
- 
**Community Facilities**
- 
**Major Open Space**
- 
**Conservation**
- 
**Aggregate Resources**
- 
**Site Specific Policies**
- 
**Niagara Escarpment Plan Area**
- 
**Niagara Escarpment Development Control Area**


*For Growth Plan areas, see Schedule B-7*











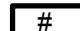

NOTES:  
This map forms part of the Official Plan for the Town of Niagara-on-the-Lake and must be read in conjunction with the text, other schedules, and secondary plans. The boundaries and alignments of designations on this schedule are approximate and are not intended to be scaled.





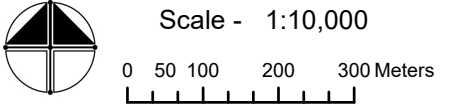


**LEGEND:**

-  Settlement Area
-  Residential
-  Established Residential
-  Mixed Use
-  Commercial
-  Employment
-  Community Facilities
-  Major Open Space
-  Conservation
-  Site Specific Policies

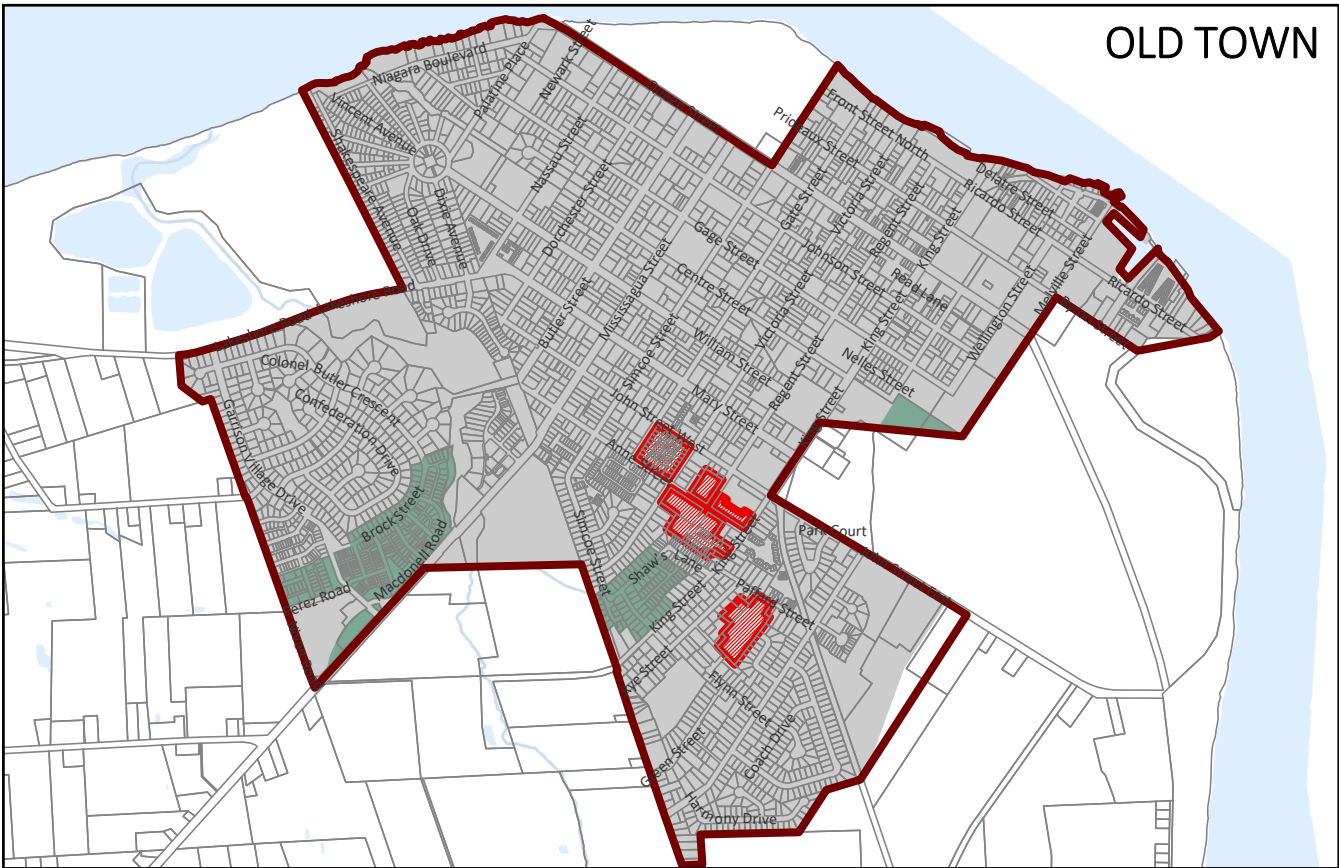
*For Growth Plan areas,  
see Schedule B-7*

Scale - 1:10,000

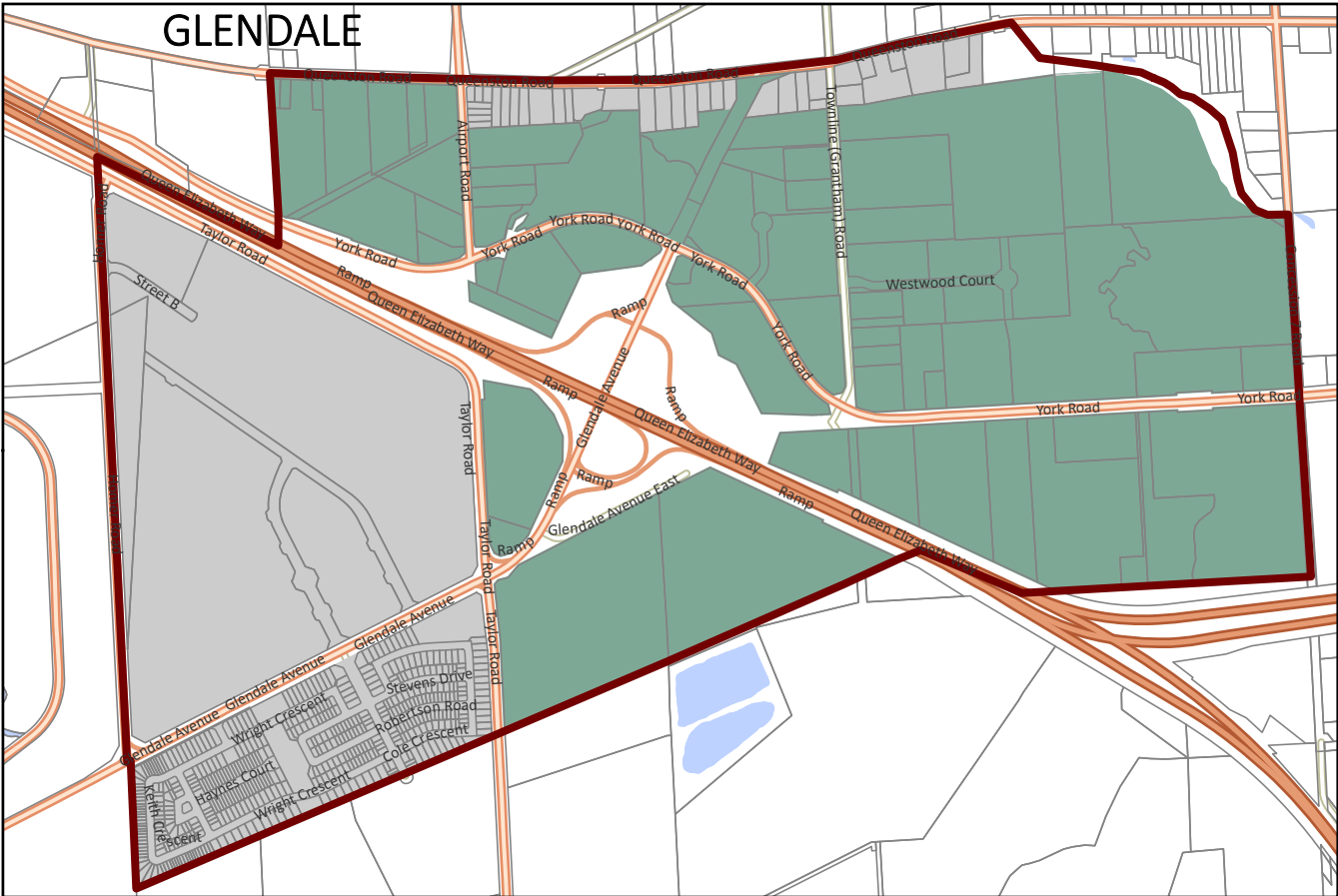


**NOTES:**  
This map forms part of the Official Plan for the Town of Niagara-on-the-Lake and must be read in conjunction with the text, other schedules, and secondary plans. The boundaries and alignments of designations on this schedule are approximate and are not intended to be scaled.

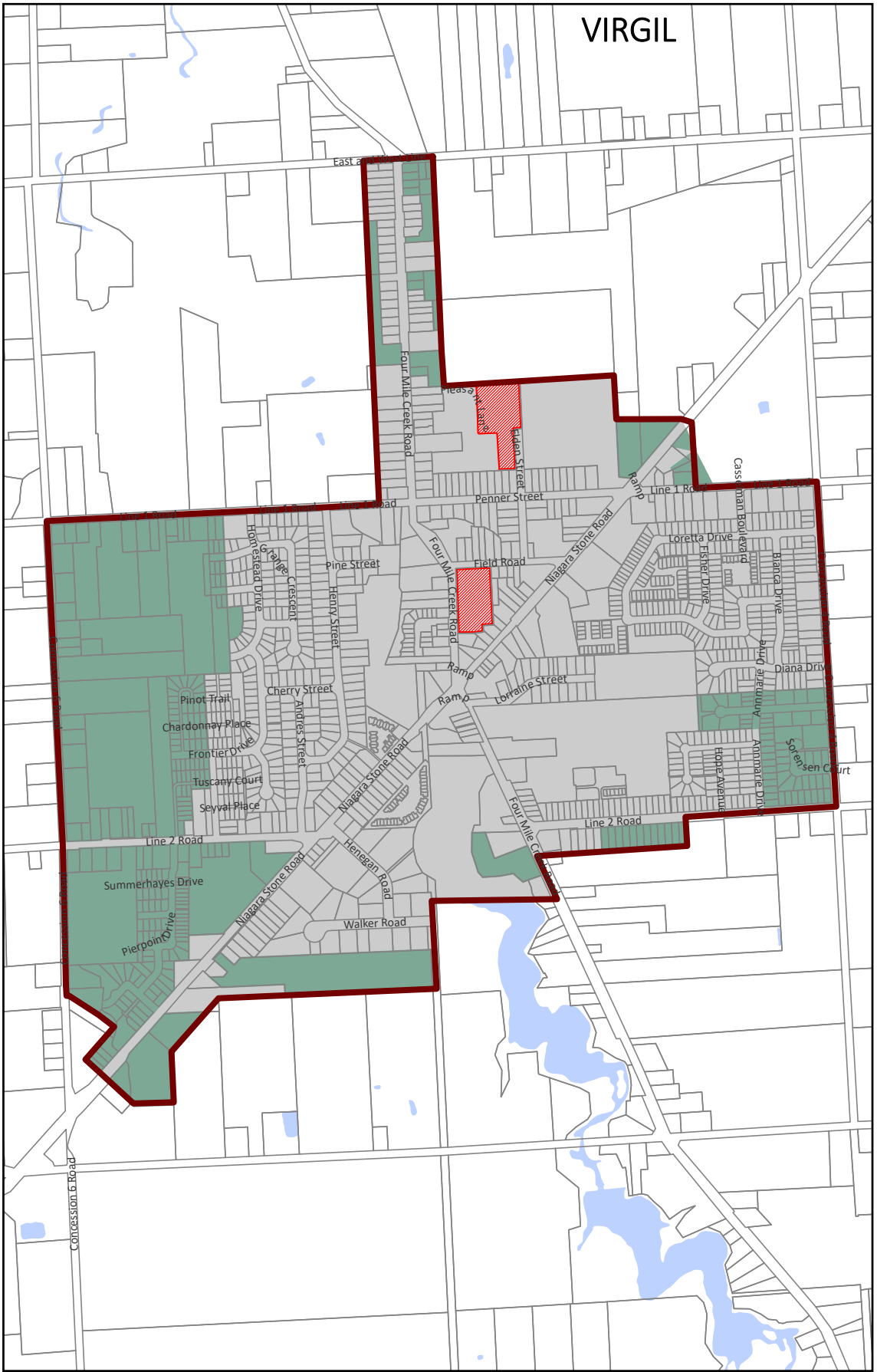
OLD TOWN




GLENDALE




VIRGIL





**LEGEND:**

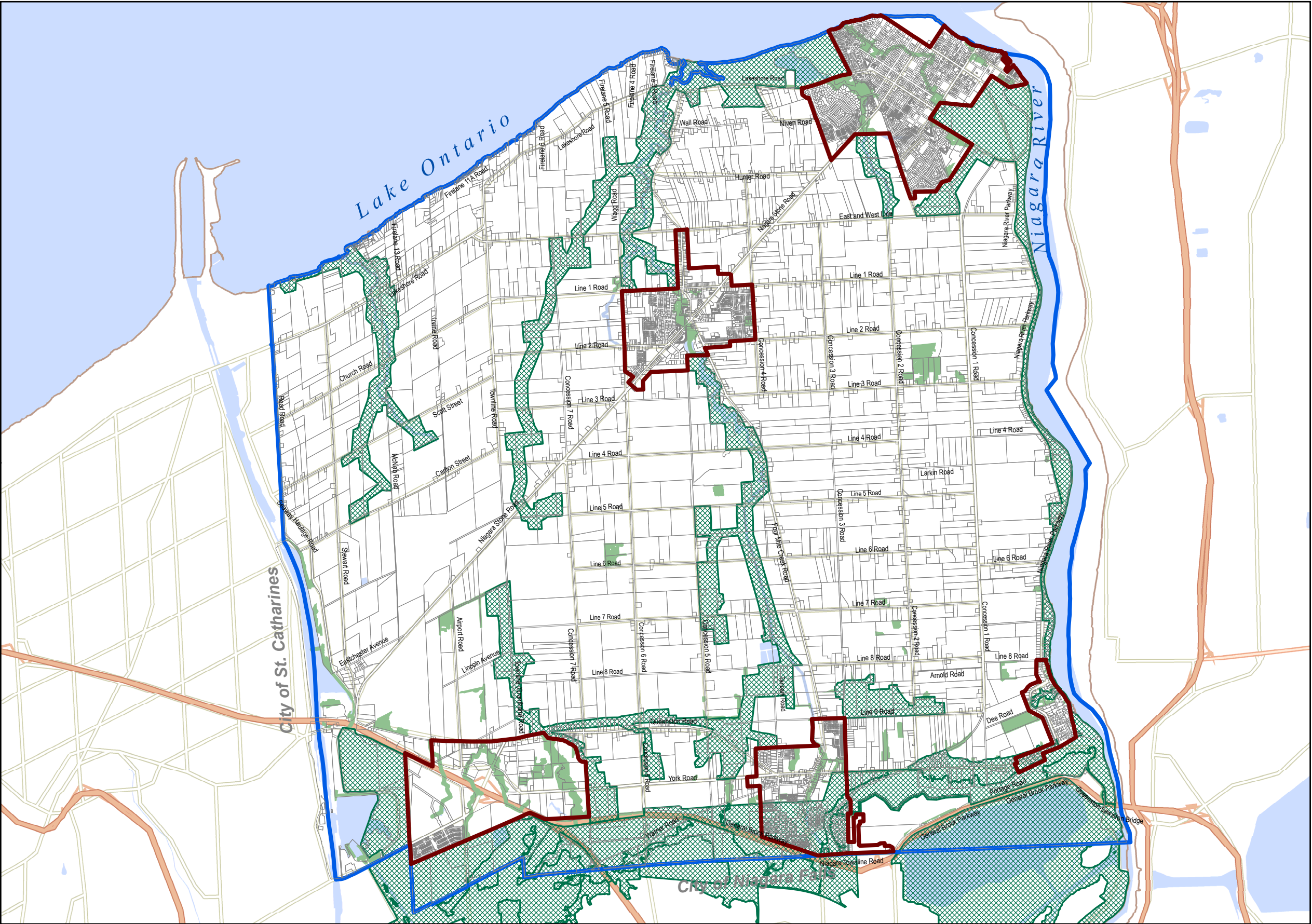
- Existing Settlement Area
- Intensification Areas
- Greenfield Areas
- Built Up Areas




**NOTES:**

This map forms part of the Official Plan for the Town of Niagara-on-the-Lake and must be read in conjunction with the text, other schedules, and secondary plans. The boundaries and alignments of designations on this schedule are approximate and are not intended to be scaled.













**LEGEND:**

**Niagara-on-the-Lake  
Natural Heritage System**

-  Municipal Boundary
-  Settlement Area
-  Niagara-on-the-Lake Natural Heritage Features
-  Provincial Natural Heritage System
-  Waterbody



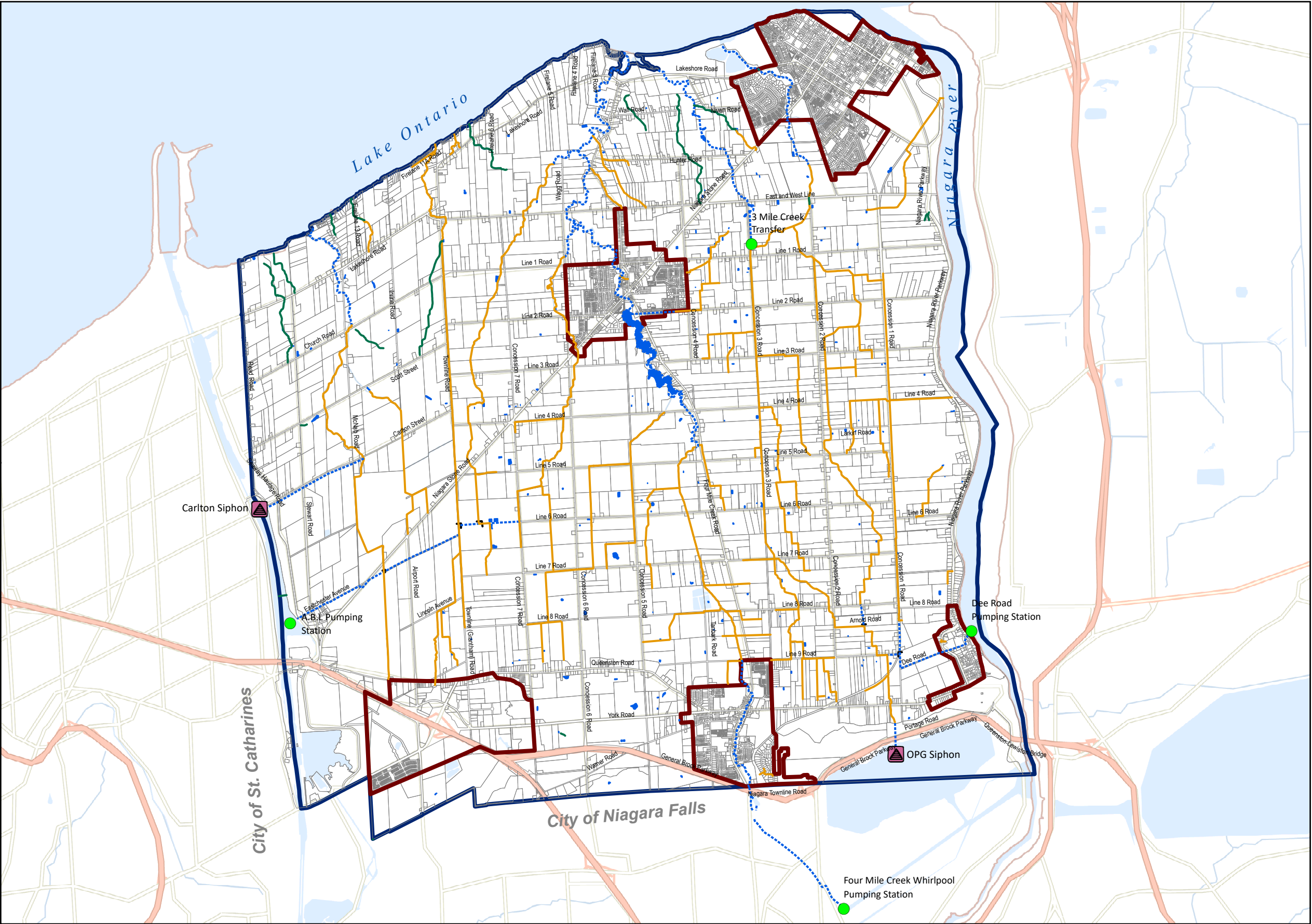
Scale - 1:60,000


0 500 1,000 2,000 Meters

**NOTES:**

This map forms part of the Official Plan for the Town of Niagara-on-the-Lake and must be read in conjunction with the text, other schedules, and secondary plans. The boundaries and alignments of designations on this schedule are approximate and are not intended to be scaled.

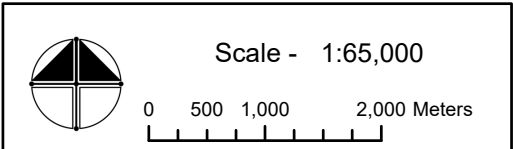






**LEGEND:**

- Irrigation Channel
- Drains
- Farm Swale
- Weir
- Agricultural-Irrigation
- Parcels
- Pumping Station
- Siphons



Scale - 1:65,000

0 500 1,000 2,000 Meters

**NOTES:**

This map forms part of the Official Plan for the Town of Niagara-on-the-Lake and must be read in conjunction with the text, other schedules, and secondary plans. The boundaries and alignments of designations on this schedule are approximate and are not intended to be scaled.

SOURCE - Operations Department - Niagara-on-the-Lake