

**144 John Street East and 176 John
Street, Niagara-On-The-Lake,
Ontario Arborist Report and Tree
Inventory Report**

March 26, 2024

Prepared for:

Solmar (Niagara 2) Corp.
122 Romina Drive
Concord, ON L4K 4Z7

Prepared by:

Stantec Consulting Ltd.

in Association With:

Buchanan Expert Tree Care Inc.



161414045

Table of Contents

1.0	INTRODUCTION	1.1
2.0	METHODOLOGY	2.1
2.1.1	Tree Inventory Methodology.....	2.1
2.1.2	Town of Niagara-on-the-Lake Tree Inventory Requirements	2.2
3.0	DESCRIPTION OF THE STUDY AREA	3.1
3.1	144 JOHN STREET EAST	3.1
3.1.1	Introduction	3.1
3.2	176 JOHN STREET EAST	3.1
3.2.1	Introduction	3.1
4.0	SUMMARY OF FINDINGS	4.1
5.0	DISCLAIMER	5.1

LIST OF TABLES

Table 1: Summary of Inventory	4.1
-------------------------------------	-----

LIST OF APPENDICES

- Appendix A: Town of Niagara-On-The-Lake List of Tree Inventory Requirements
- Appendix B: Tree Inventory Chart
- Appendix C: Tree Inventory Plans

144 JOHN STREET EAST AND 176 JOHN STREET, NIAGARA-ON-THE-LAKE, ONTARIO ARBORIST REPORT AND TREE INVENTORY REPORT

Introduction
March 26, 2024

1.0 INTRODUCTION

Buchanan Expert Tree Care (BETC), was retained by Solmar (Niagara 2) Corp. (the Property Owner) to prepare a Tree Inventory and Arborist Report for the properties located at 144 John Street East and 176 John Street East (the Study Area), in the Town of Niagara-on-the-Lake, Ontario. Adjacent to the Study Area are the properties 200 John Street East and 588 Charlotte Street. Together, the properties historically made up the estate known as “Randwood”. Other lands adjacent to the properties were also formerly part of the Randwood Estate but have been severed into subdivisions surrounding Christopher Street and Weatherstone Court.

All tree inventory and assessments were conducted by Bill Buchanan, HBSc Forestry, ISA Board Certified Master Arborist NY-0392B. Graphic preparation and field technician support was provided by Stantec.

The tree inventory was led by Bill Buchanan, ISA Board Certified Master Arborist. Mr. Buchanan was assisted by David Waverman, Senior Landscape Architect and Cultural Heritage Specialist, Frank Smith, Stantec, Cultural Heritage Specialist and Kimberley Beech, Stantec, Landscape Architect Intern.

The tree inventory was conducted on the following dates:

- May 20, 2022 (Bill Buchanan, Frank Smith, Kimberley Beech).
- May 25, 2022 (Bill Buchanan, Frank Smith, Kimberley Beech).



BUCHANAN
expert tree care

Methodology
March 26, 2024

2.0 METHODOLOGY

2.1.1 Tree Inventory Methodology

At the request of the Town, the following information on the individual and tree groups was inventoried and appears graphically on the tree inventory plans; as text in the tree inventory charts, found in Appendices B, C.

- 3.1 **Tree species**, scientific and common name.
- 3.2 **Trees on private and public adjacent lands** within 6 metres of the subject properties.
- 3.3 **Diameter at Breast Height (DBH)** (metric). Measurement of the trunk at 1.4m above grade. Expressed as diameter in centimetres.
- 3.4 **Tree Canopies/Dripline**: All tree canopies (also referred to as “Dripline”) of individual trees inventoried have their approximate dripline mapped onto the tree inventory plan. All tree driplines had the measurements of the approximate extents of the branches measured from the trunk of the tree. Note that tree canopies are not entirely symmetrical nor perfectly circular in shape, canopies indicated are based on the mean distance radiating out from the tree. Outline of tree grouping canopies based on air photo interpretation.
- 3.5 **Health Rating System**: The following health rating system has been used and has been based on visual inspection on the days of the field work:
 - 0 – Dead, hazardous, or uprooting. Tree exhibits no signs of life. Needs removal.
 - 1 – Declining or diseased tree. Too weak to survive construction. Recommend removal.
 - 2 – Relatively healthy but less vigorous. Will struggle with root zone impacts.
 - 3 – Healthy and vigorous. Defects if present are minor (e.g., twig dieback, small wounds) Good chance of survival with construction depending on proximity.
- 3.6 **Natural (occurring) or Cultural (planted)**: The tree inventory also included identifying if the tree appeared as per professional opinion of the ISA Certified Master Arborist and Senior Landscape Architect to be naturally occurring (labelled natural on tree inventory plans) or cultural (planted). This information will help inform the municipality whether the trees and their associated siting’s are part of a cultural heritage landscape.
- 3.7 **Photographic Record**: A photographic record of each individual tree was recorded and will be submitted with the final Tree Management Plan.



BUCHANAN
arboriculture

144 JOHN STREET EAST AND 176 JOHN STREET, NIAGARA-ON-THE-LAKE, ONTARIO ARBORIST REPORT AND TREE INVENTORY REPORT

Methodology
March 26, 2024

2.1.2 Town of Niagara-on-the-Lake Tree Inventory Requirements

The methodology used for the tree inventory was adopted from the tree inventory requirements provided by the Town of Niagara-on-the-lake. These requirements were acquired from the town for the purpose of the initial “200 John Street East and 588 Charlotte Street, Niagara-on-the-lake, Ontario Arborist Report and Tree Inventory Report” completed on April 9th, 2021 for the Solmar subdivision application. Refer to Appendix A for the full list of requirements.



BUCHANAN
arboriculture

144 JOHN STREET EAST AND 176 JOHN STREET, NIAGARA-ON-THE-LAKE, ONTARIO ARBORIST REPORT AND TREE INVENTORY REPORT

Description of the Study Area.
March 26, 2024

3.0 DESCRIPTION OF THE STUDY AREA.

3.1 144 JOHN STREET EAST

3.1.1 Introduction

The 144 John Street East property is an irregularly shaped parcel of land that can be accessed via John Street East. The property borders 176 John Street east to the southeast, and 588 Charlotte Street to the south, and the residential subdivisions along Christopher Street and Charlotte Street to the west, and John Street East to the North. The 144 John Street East property has a wide variety of natural and culturally planted tree species of ranging ages. The complete tree inventory for 144 John Street is captured in Appendix B.

3.2 176 JOHN STREET EAST

3.2.1 Introduction

The 176 John Street East property borders 200 John Street East to the northeast, 588 Charlotte Street to the south, John Street East to the north. The property can be accessed via a gate along John Street East. The 176 John Street East property has a diverse selection of tree species both naturally and culturally planted. The complete tree inventory for 176 John Street is captured in Appendix B.



BUCHANAN
arboriculture

144 JOHN STREET EAST AND 176 JOHN STREET, NIAGARA-ON-THE-LAKE, ONTARIO ARBORIST REPORT AND TREE INVENTORY REPORT

Summary of Findings
March 26, 2024

4.0 SUMMARY OF FINDINGS

Note that any species ranked as Endangered, Threatened, or of Special Concern, located on the Subject Lands or within 6 m of the property lines were inventoried and assessed.

There are no trees identified as *species at risk or regionally significant/endangered* species identified for removal.

Consistent with the original reports, all inventoried trees have been identified by their scientific name and regionally used common name.

Table 1: Summary of Inventory

Item	Description	Quantity
1	Total Number of Individual Trees Inventoried	407
2	Total Tree Groups Inventoried	12
3	Total Number of Trees Inventoried on Adjacent Properties	13
4	Total Number of Inventoried Cultural Trees on Subject Properties	343
5	Total Number of Inventoried Natural Trees on Subject Properties	64
6	Total Number of Dead Trees on Subject Properties	4



BUCHANAN
arboriculture

144 JOHN STREET EAST AND 176 JOHN STREET, NIAGARA-ON-THE-LAKE, ONTARIO ARBORIST REPORT AND TREE INVENTORY REPORT

Disclaimer
March 26, 2024

5.0 DISCLAIMER

The assessment of the trees presented within this report has been made using accepted arboricultural techniques. These include a visual examination of the above-ground parts of each tree for structural defects, scars, external indications of decay, evidence of insect presence, discoloured foliage, the general condition of the trees and the surrounding site, as well as the proximity of property and people. None of the trees examined were dissected, cored, probed, or climbed, and detailed root crown examinations involving excavation were not undertaken.

Notwithstanding the recommendations and conclusions made in this report, it must be realized that trees are living organisms and their health and vigour is constantly changing. They are not immune to changes in site conditions or seasonal variations in the weather.

It is both professionally and practically impossible to predict with absolute certainty the behavior of any single tree or group of trees in all circumstances. Inevitably a standing tree will always pose some risk. Most trees have the potential for failure if provided with the necessary combinations of stresses and elements. This risk can only be eliminated if the tree is removed.

Although every effort has been made to ensure that this assessment is reasonably accurate, the trees should be re-assessed periodically. The assessment presented in this report is valid at the time of inspection.

All of which is respectfully submitted,

BUCHANAN EXPERT TREE CARE INC.



Bill Buchanan, HBSc Forestry
ISA Board Certified Master Arborist NY-0392B



BUCHANAN
expert tree care

**APPENDIX A:
Town of Niagara-On-The-Lake List of
Tree Inventory Requirements**

Original List of Tree Inventory Requirements from the Town of Niagara-on-the-Lake

TERMS OF REFERENCE

Given this history and context, we are looking for an Arborist Report and Tree Inventory that includes:

- 1. Trees on adjacent private and municipal lands that are within 6 m of the Subdivision Property boundary.*
- 2. Identification and use of the minimum DBH for trees to be surveyed as per ISA standards. Survey all trees that meet that standard. Include DBH in Tree Inventory Chart.*
- 3. DBH in metric.*
- 4. An indication as to whether tree canopies shown are conceptual or accurate.*
- 5. A Health Rating System based on the tree health in its current condition.*
- 6. A Tree Inventory that identifies and differentiates trees proposed for removal due to poor health v. the proposed development.*
- 7. Photos sufficient to assess tree character and the basis for the health rating assigned.*
- 8. The dates for site visits or visual inspections.*

APPENDIX B: Tree Inventory Chart

Table 1 Individual Trees 144 & 167 John Street East

Tag #	Botanical Name	Common Name	DBH(cm)	Health (Overall Condition)	Canopy Dripline Diameter (m)	Cultural (C) or Natural (N)	Approx. Age
1	<i>Juglans nigra</i>	Black Walnut	62	3	8	N	30
1A	<i>Juglans nigra</i>	Black Walnut	39	3	4	N	20
2	<i>Tilia sp.</i>	Linden	8	3	4	N	6
3	<i>Chamaecyparis sp.</i>	Cypress	26	3	5	C	30
4	<i>Chamaecyparis sp.</i>	Cypress	18	3	5	C	30
5	<i>Chamaecyparis sp.</i>	Cypress	23	5	5	C	30
6	<i>Acer rubrum</i>	Red Maple	35	1	6	C	30
7	<i>Pinus strobus</i>	White Pine	36	3	6	C	30
8	<i>Aesculus hippocastanum</i>	Horsechestnut	81	3	8	C	90
9	<i>Morus sp.</i>	Mulberry	31	2	5	N	12
10	<i>Pterocarya fraxinifolia</i>	Cacasian Wingnut	37	2	6	C	30
11	<i>Quercus rubra</i>	Red Oak	49	2	10	C	50
12	<i>Quercus alba</i>	White Oak	42	2	4	C	50
13	<i>Juglans regia</i>	English Walnut	46	3	8	C	50
14	<i>Juglans regia</i>	English Walnut	39	1	4	C	50
15	<i>Pinus strobus</i>	White Pine	20	3	5	C	30
16	<i>Prunus serotina</i>	Black Cherry	59	1	7	C	30
17	<i>Juglans nigra</i>	Black Walnut	56	3	17	C	50
18	<i>Robinia pseudoacacia</i>	Black Locust	57	0	0	N	40
19	<i>Juglans nigra</i>	Black Walnut	70	3	14	N	70
20	<i>Cercis canadensis</i>	Redbud	8	3	3	N	10
21	<i>Acer saccharum</i>	Sugar Maple	15	3	6	N	15
22	<i>Ailanthus altissima</i>	Tree of Heaven	19	3	4	N	10
23	<i>Juglans regia</i>	English Walnut	45	2	8	C	50
24	<i>Juglans regia</i>	English Walnut	24	2	4	N	15
25	<i>Quercus rubra</i>	Red Oak	64	3	14	C	90
26	<i>Tilia sp.</i>	Linden	45	3	10	C	50
27	<i>Juglans regia</i>	English Walnut	41	1	4	C	50
28	<i>Juglans nigra</i>	Black Walnut	70	3	15	C	90
29	<i>Acer saccharum</i>	Sugar Maple	48	2	10	C	50
30	<i>Quercus alba</i>	White Oak	38	3	8	C	50
31	<i>Acer rubrum</i>	Red Maple	17	3	4	C	15
32	<i>Pinus nigra</i>	Austrian Pine	80	1	6	C	90
33	<i>Juglans nigra</i>	Black Walnut	53	3	12	C	50
34	<i>Acer saccharum</i>	Sugar Maple	112	3	20	N	200
35	<i>Acer rubrum</i>	Red Maple	59	2	8	C	90
36	<i>Acer saccharum</i>	Sugar Maple	68	2	15	C	90
37	<i>Ilex opaca</i>	American Holly	5cm 3stem	3	2	C	15
38	<i>Quercus rubra</i>	Red Oak	68	3	15	C	90
39	<i>Quercus rubra</i>	Red Oak	83	3	20	N	150
40	<i>Quercus rubra</i>	Red Oak	68	3	14	C	90
41	<i>Tsuga sp.</i>	Hemlock	16	3	6	C	30
42	<i>Acer rubrum</i>	Red Maple	93	3	14	C	90
43	<i>Pinus strobus</i>	White Pine	28	3	8	C	30
44	<i>Pinus strobus</i>	White Pine	38	3	8	C	30
45	<i>Pinus strobus</i>	White Pine	44	3	8	C	30
46	<i>Pterocarya fraxinifolia</i>	Cacasian Wingnut	69	3	18	C	50
47	<i>Morus alba</i>	White Mulberry	51	2	11	N	50
48	<i>Acer saccharum</i>	Sugar Maple	33	3	10	C	30
49	<i>Picea abies</i>	Norway Spruce	47	3	5	C	50
50	<i>Picea abies</i>	Norway Spruce	51	3	8	C	50
51	<i>Chamaecyparis sp.</i>	Cypress	18	3	5	C	50
52	<i>Chamaecyparis sp.</i>	Cypress	14	3	5	C	50

53	<i>Chamaecyparis sp.</i>	Cypress	12	3	5	C	50
54	<i>Picea abies</i>	Norway Spruce	61	2	8	C	50
55	<i>Picea abies</i>	Norway Spruce	55	2	7	C	50
56	<i>Quercus rubra</i>	Red Oak	49	2	6	C	90
2A	<i>Acer saccharum</i>	Sugar Maple	12	3	5	N	15
3A	<i>Juglans nigra</i>	Black Walnut	42	2	12	N	70
57	<i>Picea abies</i>	Norway Spruce	54	2	5	C	50
58	<i>Cercis canadensis</i>	Redbud	4cm - multi stem	3	4	N	15
59	<i>Picea abies</i>	Norway Spruce	64	2	7	N	50
60	<i>Tsuga sp.</i>	Hemlock	12	3	3	C	15
61	<i>Tsuga sp.</i>	Hemlock	6cm - 3 stem	3	3	C	15
62	<i>Cercis canadensis</i>	Redbud	12	3	4	C	15
63	<i>Cercis canadensis</i>	Redbud	10	3	4	C	15
64	<i>Picea abies</i>	Norway Spruce	43	3	8	C	50
4A	<i>Picea abies</i>	Norway Spruce	73	3	12	C	90
5A	<i>Picea abies</i>	Norway Spruce	31	3	2	C	20
6A	<i>Picea abies</i>	Norway Spruce	23	3	2	C	20
7A	<i>Picea abies</i>	Norway Spruce	23	3	2	C	20
65	<i>Prunus serotina</i>	Black Cherry	34	3	6	N	30
8A	<i>Picea abies</i>	Norway Spruce	46	3	6	C	50
9A	<i>Picea abies</i>	Norway Spruce	42	3	6	C	50
10A	<i>Picea abies</i>	Norway Spruce	48	3	6	C	50
11A	<i>Picea abies</i>	Norway Spruce	43	3	6	C	50
66	<i>Juglans nigra</i>	Black Walnut	42	3	8	N	40
67	<i>Fraxinus americana</i>	White Ash	2 x 12cm	1	4	N	10
68	<i>Pinus strobus</i>	White Pine	18	1	5	C	25
69	<i>Acer saccharum</i>	Sugar Maple	47	2	12	C	50
70	<i>Magnolia x soulangeana</i>	Saucer Magnolia	14	2	6	C	25
71	<i>Ginkgo biloba</i>	Ginkgo	60	2	12	C	50
72	<i>Acer griseum</i>	Paperbark Maple	2 x 12cm	3	4	C	25
73	<i>Juglans regia</i>	English Walnut	73	3	18	C	50
74	<i>Magnolia x soulangeana</i>	Saucer Magnolia	10	3	3	C	25
75	<i>Thuja occidentalis 'smaragd'</i>	Emerald Green Cedar	Multi-Stem 10cm	3	2	C	25
76	<i>Acer palmatum 'Bloodgood'</i>	Bloodgood Japanese Maple	Multi-Stem 10cm	3	5	C	25
77	<i>Magnolia stellata</i>	Star Magnolia	14	3	4	C	25
78	<i>Picea abies</i>	Norway Spruce	63	3	8	C	50
79	<i>Betula papyrifera</i>	White Birch	53	2	10	C	50
80	<i>Prunus serotina</i>	Black Cherry	42	3	8	N	30
81	<i>Picea abies</i>	Norway Spruce	72	3	8	C	90
82	<i>Cornus alternifolia</i>	American Dogwood	20	2	4	C	50
83	<i>Acer rubrum</i>	Red Maple	68	3	2	C	90
84	<i>Acer rubrum</i>	Red Maple	28	2	4	N	30
85	<i>Magnolia x soulangeana</i>	Saucer Magnolia	2 x 12cm	3	4	C	25
86	<i>Fagus sylvatica</i>	European Copper Beech	20	3	5	C	25
87	<i>Acer palmatum 'Bloodgood'</i>	Bloodgood Japanese Maple	16	3	5	C	25
88	<i>Thuja sp.</i>	Crypted merg Cedar	42	3	4	C	50
89	<i>Thuja sp.</i>	Crypted merg Cedar	44	3	4	C	50
90	<i>Platanus occidentalis</i>	Sycamore	12	3	4	C	10
91	<i>Platanus occidentalis</i>	Sycamore	12	3	4	C	10
92	<i>Platanus occidentalis</i>	Sycamore	12	3	4	C	10
93	<i>Platanus occidentalis</i>	Sycamore	12	3	4	C	10
94	<i>Platanus occidentalis</i>	Sycamore	12	3	4	C	10
95	<i>Acer rubrum</i>	Red maple	12	3	3	C	10
96	<i>Pinus nigra</i>	Austrian Pine	63	1	8	C	50
97	<i>Pinus nigra</i>	Austrian Pine	41	1	7	C	50
98	<i>Aesculus hippocastanum</i>	Horsechestnut	79	3	8	N	80
99	<i>Platanus occidentalis</i>	Sycamore	112	2	20	N	90
100	<i>Aesculus glabra</i>	Ohio Buckeye	23	1	5	C	25
101	<i>Aesculus hippocastanum</i>	Horsechestnut	93	2	12	C	90
102	<i>Acer rubrum</i>	Red Maple	63	2	11	C	90

103	<i>Quercus rubra</i>	Red Oak	12	1	4	C	10
104	<i>Quercus rubra</i>	Red Oak	12	2	4	C	10
105	<i>Quercus rubra</i>	Red Oak	14	2	4	C	10
106	<i>Quercus rubra</i>	Red Oak	17	3	4	C	10
107	<i>Cornus sp.</i>	Dogwood	11	2	4	C	25
108	<i>Cornus sp.</i>	Dogwood	20	3	6	C	50
109	<i>Pinus strobus</i>	White Pine	93	3	20	N	200
110	<i>Pinus nigra</i>	Austrian Pine	44	1	6	C	50
111	<i>Picea abies</i>	Norway Spruce	58	2	6	C	90
112	<i>Picea abies</i>	Norway Spruce	49	2	6	C	90
113	<i>Picea abies</i>	Norway Spruce	53	3	6	C	90
114	<i>Picea abies</i>	Norway Spruce	50	3	6	C	90
115	<i>Acer platanoides</i>	Norway Maple	70	3	12	C	50
116	<i>Acer platanoides</i>	Norway Maple	74	3	12	C	50
117	<i>Acer platanoides</i>	Norway Maple	52	1	10	C	50
118	<i>Acer saccharum</i>	Sugar Maple	58	2	14	N	70
119	<i>Acer saccharum</i>	Sugar Maple	66	3	14	N	80
120	<i>Quercus rubra</i>	Red Oak	15	2	4	C	25
121	<i>Picea abies</i>	Norway Spruce	70	2	7	C	90
122	<i>Quercus rubra</i>	Red Oak	18	3	5	C	15
123	<i>Acer saccharum</i>	Sugar Maple	93	3	18	N	200
124	<i>Juglans regia</i>	English Walnut	58	3	14	C	90
125	<i>Juglans nigra</i>	Black Walnut	67	3	12	C	90
126	<i>Acer saccharum</i>	Sugar Maple	96	3	18	N	200
127	<i>Picea abies</i>	Norway Spruce	38	3	10	C	50
128	<i>Acer saccharum</i>	Sugar Maple	81	2	10	N	200
129	<i>Acer saccharum</i>	Sugar Maple	20	3	8	C	20
130	<i>Quercus rubra</i>	Red Oak	66	3	16	C	90
131	<i>Populus alba</i>	Silver Poplar	95	1	18	C	50
132	<i>Cornus alternifolia</i>	American Dogwood	23	3	5	C	50
133	<i>Pinus strobus</i>	White Pine	84	3	12	N	200
134	<i>Carya glabra</i>	Pignut Hickory	77	3	18	N	200
135	<i>Prunus sp.</i>	Cornelia Cherry	15	3	8	C	25
136	<i>Platanus occidentalis</i>	Sycamore	12	3	5	C	15
137	<i>Picea abies</i>	Norway Spruce	46	3	8	C	50
138	<i>Carya glabra</i>	Pignut Hickory	119	3	22	N	250
139	<i>Carya glabra</i>	Pignut Hickory	37	3	7	N	40
140	<i>Aesculus hippocastanum</i>	Horsechestnut	56	3	12	C	50
141	<i>Pinus nigra</i>	Austrian Pine	35	1	5	C	50
142	<i>Quercus rubra</i>	Red Oak	26	3	8	C	25
143	<i>Cercis canadensis</i>	Redbud	10	2	3	C	25
144	<i>Quercus palustris</i>	Pin Oak	12	3	4	C	15
145	<i>Cercis canadensis</i>	Redbud	14	3	5	C	25
146	<i>Pinus strobus</i>	White Pine	35	3	5	C	25
147	<i>Acer saccharinum</i>	Silver Maple	124	3	22	C	90
148	<i>Quercus rubra</i>	Red Oak	68	3	14	C	90
149	<i>Acer saccharinum</i>	Silver Maple	131	3	22	C	90
150	<i>Pinus nigra</i>	Austrian Pine	34	1	4	C	25
151	<i>Pinus nigra</i>	Austrian Pine	33	1	4	C	25
152	<i>Pinus nigra</i>	Austrian Pine	39	1	4	C	25
153	<i>Tsuga sp.</i>	Hemlock	18	3	5	C	25
154	<i>Tsuga sp.</i>	Hemlock	12	1	4	C	25
155	<i>Picea abies</i>	Norway Spruce	26	3	6	C	25
156	<i>Betula papyrifera</i>	White Birch	47	3	10	C	50
157	<i>Pinus strobus</i>	White Pine	26	3	6	C	25
158	<i>Picea abies</i>	Norway Spruce	33	2	7	C	50
159	<i>Picea abies</i>	Norway Spruce	31	2	5	C	50
160	<i>Picea abies</i>	Norway Spruce	40	0	0	C	50
161	<i>Picea abies</i>	Norway Spruce	28	2	4	C	50
162	<i>Quercus rubra</i>	Red Oak	93	3	16	N	150

163	<i>Acer rubrum</i>	Red Maple	61	2	12	C	90
164	<i>Sassafras</i>	Sassafras	54	3	12	C	50
165	<i>Prunus serotina</i>	Black Cherry	62	3	10	N	50
166	<i>Sassafras</i>	Sassafras	41	3	8	N	30
167	<i>Cornus alternifolia</i>	American Dogwood	14	3	7	N	25
168	<i>Quercus alba</i>	White Oak	97	3	22	N	250
169	<i>Quercus alba</i>	White Oak	126	3	28	N	300
170	<i>Pinus strobus</i>	White Pine	45	3	8	N	50
171	<i>Sassafras</i>	Sassafras	27	3	7	N	30
172	<i>Pinus strobus</i>	White Pine	27	3	6	N	50
173	<i>Pinus strobus</i>	White Pine	38	3	8	C	70
174	<i>Pinus strobus</i>	White Pine	64	3	12	C	90
175	<i>Pinus strobus</i>	White Pine	49	3	10	C	75
176	<i>Pinus strobus</i>	White Pine	22	3	7	C	25
177	<i>Pinus strobus</i>	White Pine	27	3	7	C	25
178	<i>Pinus strobus</i>	White Pine	64	2	12	C	120
179	<i>Pinus strobus</i>	White Pine	25	3	7	C	25
180	<i>Pinus strobus</i>	White Pine	69	3	12	C	150
181	<i>Pinus strobus</i>	White Pine	32	3	6	N	30
182	<i>Pinus strobus</i>	White Pine	53	3	12	C	100
183	<i>Pinus strobus</i>	White Pine	33	3	8	C	25
184	<i>Sassafras</i>	Sassafras	45	0	10	C	30
185	<i>Sassafras</i>	Sassafras	53	3	12	C	50
186	<i>Chionanthus virginicus</i>	Fringe tree ***	11	3	3	C	25
187	<i>Acer platanoides</i>	Norway Maple	30	2	7	C	25
188	<i>Juglans nigra</i>	Black Walnut	89	3	14	C	100
189	<i>Chamaecyparis sp.</i>	Cypress	28	3	4	C	50
190	<i>Pinus strobus</i>	White Pine	37	1	5	C	25
191	<i>Robinia pseudoacacia</i>	Black Locust	43	2	7	C	50
192	<i>Pinus strobus</i>	White Pine	83	3	12	C	100
193	<i>Tsuga sp.</i>	Eastern Hemlock	55	3	14	C	100
194	<i>Pinus strobus</i>	White Pine	71	3	12	C	100
195	<i>Pinus strobus</i>	White Pine	83	0	3	C	100
196	<i>Pinus strobus</i>	White Pine	27	3	7	C	25
197	<i>Pinus strobus</i>	White Pine	49	3	10	C	100
198	<i>Pinus strobus</i>	White Pine	45	3	10	C	100
199	<i>Pinus strobus</i>	White Pine	44	1	6	C	100
200	<i>Acer saccharum</i>	Sugar Maple	57	3	14	C	100
201	<i>Pinus strobus</i>	White Pine	45	3	8	N	75
202	<i>Pinus strobus</i>	White Pine	67	3	12	C	100
203	<i>Pinus strobus</i>	White Pine	32	3	6	N	50
204	<i>Robinia pseudoacacia</i>	Black Locust	56	1	10	C	75
205	<i>Pinus strobus</i>	White Pine	39	1	7	N	75
206	<i>Pinus strobus</i>	White Pine	47	3	12	C	100
207	<i>Betula papyrifera</i>	White Birch	11cm x 2 stem	0,0	3	C	10
208	<i>Acer platanoides</i>	Norway Maple	47	3	10	C	25
209	<i>Juglans nigra</i>	Black Walnut	105	3	15	C	100
210	<i>Juglans nigra</i>	Black Walnut	53	3	12	C	75
211	<i>Juglans nigra</i>	Black Walnut	53	3	12	C	75
212	<i>Pinus strobus</i>	White Pine	86	2	14	C	100
213	<i>Tsuga sp.</i>	Hemlock	68	3	14	C	100
214	<i>Tsuga sp.</i>	Hemlock	61	3	14	C	100
215	<i>Tsuga sp.</i>	Hemlock	56	3	12	C	100
216	<i>Pinus strobus</i>	White Pine	56	3	8	C	100
217	<i>Pinus strobus</i>	White Pine	68	3	10	C	100
218	<i>Pinus strobus</i>	White Pine	24	3	3	N	25
219	<i>Quercus rubra</i>	Red Oak	80	3	12	C	100
220	<i>Prunus sp.</i>	Cherry sp.	27	3	7	C	25
221	<i>Pinus strobus</i>	White Pine	42	3	8	C	50
222	<i>Aesculus hippocastanum</i>	Horsechestnut	63	3	12	C	50

223	<i>Robinia pseudoacacia</i>	Black Locust	78	2	7	N	50
224	<i>Aesculus hippocastanum</i>	Horsechestnut	49	3	7	C	50
225	<i>Prunus serotina</i>	Black Cherry	63	2	12	N	50
226	<i>Pinus strobus</i>	White Pine	46	2	8	C	50
227	<i>Morus alba</i>	White Mulberry	47	3	7	N	30
228	<i>Aesculus hippocastanum</i>	Horsechestnut	53	3	14	C	50
229	<i>Cornus alternifolia</i>	American Dogwood	8	3	4	C	10
230	<i>Aesculus hippocastanum</i>	Horsechestnut	50	3	8	C	50
231	<i>Aesculus hippocastanum</i>	Horsechestnut	52	3	12	C	50
232	<i>Quercus rubra</i>	Red Oak	93	3	18	C	150
233	<i>Quercus rubra</i>	Red Oak	30	3	8	C	25
234	<i>Chamaecyparis sp.</i>	Cypress	27	3	4	C	25
235	<i>Cornus alternifolia</i>	American Dogwood	8cm x 2 stem	3	4	C	25
236	<i>Tsuga sp.</i>	Hemlock	34	3	8	C	50
237	<i>Pinus sylvestris</i>	Scotch Pine	30	3	5	C	25
238	<i>Pinus strobus</i>	White Pine	75	3	12	N	200
239	<i>Pinus strobus</i>	White Pine	78	3	12	N	200
240	<i>Picea rubens</i>	Red Spruce	26	3	4	C	50
241	<i>Tsuga sp.</i>	Hemlock	54	3	14	C	120
242	<i>Tsuga sp.</i>	Hemlock	48	3	8	C	100
243	<i>Pseudotsuga menziesii</i>	Douglas Fir	55	3	10	C	100
244	<i>Abies concolor</i>	White Fir	55	3	6	C	100
245	<i>Hydrangea sp.</i>	Hydrangea sp.	2x multistem	3	3	C	10
246	<i>Cercis canadensis sp.</i>	White Eastern Redbud	21	3	6	C	50
247	<i>Prunus serotina</i>	Black Cherry	38	1	7	N	30
248	<i>Picea abies</i>	Norway Spruce	54	3	7	C	75
249	<i>Larix laricina</i>	Tamarack	22	3	6	C	25
250	<i>Prunus sp.</i>	Cherry sp.	23	3	8	C	50
251	<i>Larix laricina</i>	Tamarack	29	3	8	C	50
252	<i>Acer platanoides</i>	Norway Maple	67	2	12	C	50
253	<i>Acer platanoides</i>	Norway Maple	51	3	10	C	50
254	<i>Pinus strobus</i>	White Pine	47	2	7	C	50
255	<i>Picea abies</i>	Norway Spruce	53	3	12	C	50
256	<i>Pinus strobus</i>	White Pine	42	1	8	C	50
257	<i>Tilia sp.</i>	Linden	27	3	7	C	25
258	<i>Tsuga sp.</i>	Hemlock	83 x 2 trunk	3	10	C	100
259	<i>Cornus kousa</i>	Kousa Dogwood	8	3	1.5	C	10
260	<i>Cornus kousa</i>	Kousa Dogwood	8	3	1.5	C	10
261	<i>Picea abies</i>	Norway Spruce	45	3	10	C	50
262	<i>Shagbark Hickory</i>	Shagbark Hickory	58	3	14	C	100
263	<i>Metasequoia glyptostroboides</i>	Dawn Redwood	70	3	15	C	50
264	<i>Metasequoia glyptostroboides</i>	Dawn Redwood	74	3	15	C	50
265	<i>Magnolia x soulangeana</i>	Saucer Magnolia	8cm multistem	1	3	C	25
266	<i>Metasequoia glyptostroboides</i>	Dawn Redwood	73	3	15	C	50
267	<i>Cornus kousa</i>	Kousa Dogwood	Multistem	3	2	C	10
268	<i>Metasequoia glyptostroboides</i>	Dawn Redwood	63	3	15	C	50
269	<i>Metasequoia glyptostroboides</i>	Dawn Redwood	44	3	9	C	50
270	<i>Metasequoia glyptostroboides</i>	Dawn Redwood	32	3	9	C	50
271	<i>Tsuga sp.</i>	Hemlock	30, 26 double stem	2	6	C	50
272	<i>Cornus kousa</i>	Kousa Dogwood	8	2	1	C	10
273	<i>Picea abies</i>	Norway Spruce	40	3	7	C	50
274	<i>Picea abies</i>	Norway Spruce	31	3	7	C	50
275	<i>Tsuga sp.</i>	Hemlock	29, 22 double stem	2	7	C	50
276	<i>Aesculus hippocastanum</i>	Horse Chesnut	51	1	5	C	50
277	<i>Pinus nigra</i>	Austrian Pine	37	1	7	C	50
278	<i>Pinus nigra</i>	Austrian Pine	47	2	7	C	50
279	<i>Abies concolor</i>	White Fir	48	2	7	C	50
280	<i>Abies fraseri</i>	Fraser Fir	42	3	8	C	50
281	<i>Abies fraseri</i>	Fraser Fir	37	3	8	C	50
282	<i>Pinus nigra</i>	Austrian Pine	47	2	8	C	50

283	<i>Picea abies</i>	Norway Spruce	46	3	10	C	50
284	<i>Tsuga sp.</i>	Hemlock	21	3	6	C	30
285	<i>Cornus kousa</i>	Kousa Dogwood	12	1	3	C	25
286	<i>Magnolia × soulangeana</i>	Saucer Magnolia	16	1	4	C	25
287	<i>Gleditsia triacanthos</i>	Honey Locust	68	1	10	C	140
288	<i>Juglans nigra</i>	Black Walnut	72	3	14	C	50
289	<i>Picea abies</i>	Norway Spruce	56	1	12	C	50
290	<i>Aesculus hippocastanum</i>	Horsechestnut	55	2	8	C	50
291	<i>Juglans nigra</i>	Black Walnut	62	3	14	C	50
292	<i>Metasequoia glyptostroboides</i>	Dawn Redwood	54	3	15	C	50
293	<i>Quercus alba</i>	White Oak	81	3	16	C	200
294	<i>Quercus rubra</i>	Red Oak	103	3	60	C	200
295	<i>Metasequoia glyptostroboides</i>	Dawn Redwood	53	3	15	C	50
296	<i>Acer palmatum 'Bloodgood'</i>	Bloodgood Japanese Maple	20	3	5	C	25
297	<i>Acer palmatum 'Bloodgood'</i>	Bloodgood Japanese Maple	20	3	6	C	25
298	<i>Tilia sp.</i>	Little Leaf Linden	82	1	10	C	50
299	<i>Tilia sp.</i>	Little Leaf Linden	23	3	5	C	25
300	<i>Tilia sp.</i>	Little Leaf Linden	21	3	5	C	25
301	<i>Tilia sp.</i>	Little Leaf Linden	21	3	5	C	25
302	<i>Acer platanoides "Crimson King"</i>	Crimson King Norway Maple	32	2	8	C	50
303	<i>Yew Taxus</i>	Yew Taxus	20,16 double trunk	2	5	C	50
304	<i>Acer platanoides</i>	Norway Maple	38	2	8	C	50
305	<i>Tsuga sp.</i>	Canadian Hemlock	52	2	7	C	75
306	<i>Pinus strobus</i>	White Pine	42	1	7	C	50
307	<i>Aesculus hippocastanum</i>	Horse Chesnut	88	3	16	C	100
308	<i>Picea abies</i>	Norway Spruce	75	3	15	C	100
309	<i>Picea abies</i>	Norway Spruce	50	3	12	C	50
310	<i>Picea glauca</i>	White Spruce	10	1	2	C	15
311	<i>Picea glauca</i>	White Spruce	12	2	3	C	15
312	<i>Katsura</i>	Katsura	34	3	5	C	25
313	<i>Tilia sp.</i>	Little Leaf Linden	73	3	16	C	100
314	<i>Amelanchier sp.</i>	Serviceberry	14	3	4	C	25
315	<i>Amelanchier sp.</i>	Serviceberry	14	3	5	C	25
316	<i>Gleditsia triacanthos</i>	Honey Locust	58	3	20	C	75
317	<i>Gingko biloba</i>	Gingko	29	3	7	C	50
318	<i>Quercus alba</i>	White Oak	57	2	12	C	75
319	<i>Gleditsia triacanthos</i>	Honey Locust	52	3	16	C	75
320	<i>Gleditsia triacanthos</i>	Honey Locust	49	3	12	C	75
321	<i>Liquidambar styraciflua</i>	Sweet Gum	31	3	7	C	50
322	<i>Liquidambar styraciflua</i>	Sweet Gum	26	3	4	C	50
323	<i>Tilia sp.</i>	Little Leaf Linden	88	3	18	C	100
324	<i>Liquidambar styraciflua</i>	Sweet Gum	30	3	8	C	50
325	<i>Gleditsia triacanthos</i>	Honey Locust	56	3	14	C	75
326	<i>Acer platanoides</i>	Norway Maple	49	3	12	C	50
327	<i>Fagus sylvatica</i>	European Copper Beach	27	3	6	C	50
328	<i>Chamaecyparis sp.</i>	Cypress	46	3	6	C	50
329	<i>Acer saccharinum</i>	Silver Maple	92	1	18	C	75
330	<i>Acer platanoides</i>	Norway Maple	42	1	9	C	50
331	<i>Acer platanoides</i>	Norway Maple	67	2	14	C	50
332	<i>Gleditsia triacanthos</i>	Honey Locust	39	3	14	C	50
333	<i>Gleditsia triacanthos</i>	Honey Locust	34	3	12	C	50
334	<i>Shagbark Hickory</i>	Shagbark Hickory	77	3	14	C	100
335	<i>Cercis canadensis</i>	Redbud	2 trunk 6cm	3	3	C	10
336	<i>Quercus rubra</i>	Red Oak	73	2	18	C	100
337	<i>Picea abies</i>	Norway Spruce	52	3	10	C	75
338	<i>Picea abies</i>	Norway Spruce	62	3	10	C	75
339	<i>Pinus strobus</i>	White Pine	20	2	4	C	25
340	<i>Picea abies</i>	Norway Spruce	32	3	8	C	75
341	<i>Picea abies</i>	Norway Spruce	47	3	8	C	75
342	<i>Picea abies</i>	Norway Spruce	50	3	12	C	75

343	<i>Picea abies</i>	Norway Spruce	51	3	12	C	75
344	<i>Prunus sp.</i>	Cherry sp.	22	3	7	C	25
345	<i>Acer glabrum var. douglasii</i>	Douglas Maple	33	3	7	N	30
346	<i>Chionanthus virginicus</i>	Fringe tree ***	18	3	6	C	25
347	<i>Picea abies</i>	Norway Spruce	42	1	7	N	75
348	<i>Cornus alternifolia sp.</i>	White American Dogwood	8	3	5	C	25
349	<i>Cornus alternifolia sp.</i>	Pink American Dogwood	6	2	2	C	25
350	<i>Fagus sylvatica</i>	European Copper Beech	37	3	8	C	50
351	<i>Cornus sp.</i>	Dogwood	8	3	3	C	25
352	<i>Thuja occidentalis 'smaragd'</i>	Emerald Green Cedar	10	2	1	C	25
353	<i>Tsuga sp.</i>	Hemlock	32	3	7	C	50
354	<i>Pinus strobus</i>	White Pine	60	3	14	C	100
355	<i>Morus sp.</i>	White Mulberry	31	1	7	N	30
356	<i>Acer negundo</i>	Manitoba Maple	60	3	12	N	40
357	<i>Pinus nigra</i>	Austrian Pine	28	2	4	C	50
358	<i>Picea abies</i>	Norway Spruce	55	3	8	C	75
359	<i>Picea abies</i>	Norway Spruce	41	3	8	C	75
360	<i>Picea abies</i>	Norway Spruce	42	3	8	C	75
361	<i>Picea abies</i>	Norway Spruce	44	3	8	C	75
362	<i>Juglans nigra</i>	Black Walnut	25cm 3 trunk	2	10	N	20
363	<i>Picea abies</i>	Norway Spruce	29	2	7	C	75
364	<i>Picea abies</i>	Norway Spruce	44	2	8	C	75
365	<i>Picea abies</i>	Norway Spruce	55	2	8	C	75
366	<i>Picea abies</i>	Norway Spruce	43	2	7	C	75
367	<i>Picea abies</i>	Norway Spruce	67	2	12	C	75
368	<i>Juglans regia</i>	English Walnut	48	3	14	C	50
369	<i>Cornus alternifolia</i>	American Dogwood	6	3	3	C	10
370	<i>Cornus alternifolia</i>	American Dogwood	20	2	4	C	50
371	<i>Picea abies</i>	Norway Spruce	52	3	10	C	50
372	<i>Carya glabra</i>	Pignut Hickory	97	3	20	C	200
373	<i>Tsuga sp.</i>	Hemlock	44	3	8	C	50
374	<i>Malus coronaria</i>	Crab Apple	32	3	7	C	50
375	Shagbark Hickory	Shagbark Hickory	74	3	15	C	150
376	<i>Tilia sp.</i>	Linden	32	1	5	C	25
377	<i>Chionanthus virginicus</i>	Fringe tree ***	14	2	4	C	25
378	<i>Viburnum sp.</i>	Viburnum	6 multistem	3	2	C	10
379	<i>Pinus strobus</i>	White Pine	29	1	5	C	25
380	<i>Pinus nigra</i>	Austrian Pine	42	3	6	C	25
381	<i>Liquidambar styraciflua</i>	Sweet Gum	33	3	7	C	25
382	<i>Acer platanoides</i>	Norway Maple	44	3	10	C	25
383	<i>Gleditsia triacanthos</i>	Honey Locust	56	3	8	N	50
384	<i>Gleditsia triacanthos</i>	Honey Locust	28	3	4	N	30
385	<i>Gleditsia triacanthos</i>	Honey Locust	28	3	5	N	30
386	<i>Gleditsia triacanthos</i>	Honey Locust	40	3	10	N	50
387	<i>Gleditsia triacanthos</i>	Honey Locust	28	3	10	N	30
388	<i>Gleditsia triacanthos</i>	Honey Locust	72	2	12	C	150
389	<i>Chamaecyparis sp.</i>	Cypress	28	2	5	C	50
390	<i>Acer saccharinum</i>	Silver Maple	67	3	16	C	50
391	<i>Acer platanoides</i>	Norway Maple	57	3	16	C	50
392	<i>Tilia sp.</i>	Little Leaf Linden	76	3	16	C	75
393	<i>Acer platanoides</i>	Norway Maple	47	3	9	C	25
394	<i>Acer platanoides</i>	Norway Maple	42	3	8	C	25
395	<i>Acer platanoides</i>	Norway Maple	53	3	8	C	25
396	<i>Picea abies</i>	Norway Spruce	21	3	4	C	20

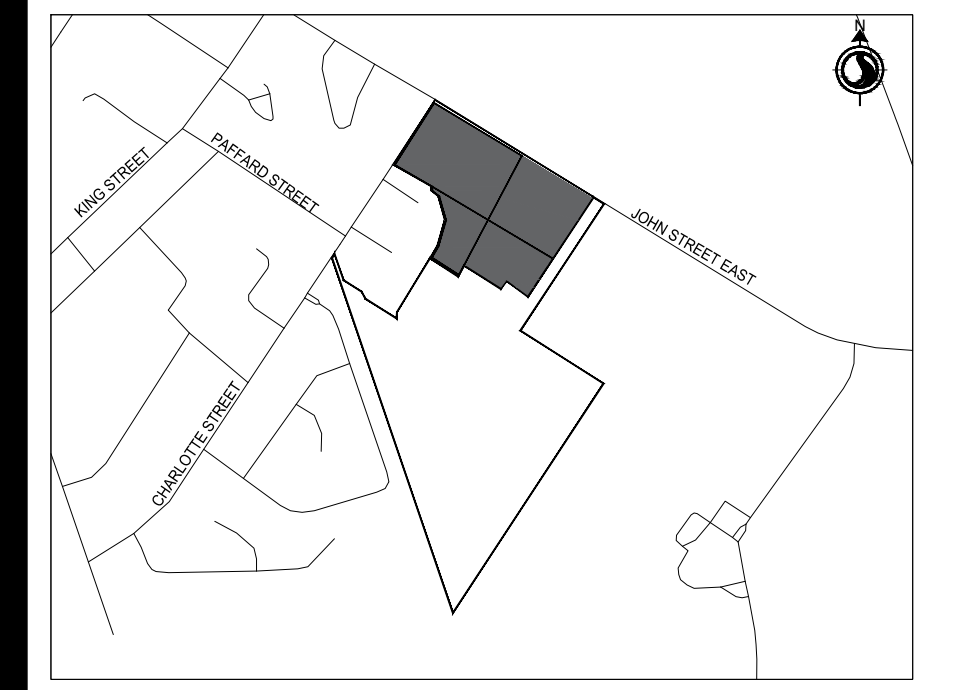
Table 2: Inventoried Tree Groupings 144 & 167 John Street East

Group #	Botanical Name	Common Name	Percentage	Approximate Age (Years)	Other Notes
1		Black Walnut	100	90-100	85-14cm DBH, Health 3, mix of Natural and Cultural
2		American Holly	100	25	10 cm DBH, Health 2, Dripline 2m, Cultural
3		Choke Cherry Norway Maple Black Walnut White Ash	85 5 5 5	Under 15	Health 3, Natural
4		Choke Cherry Cedar Norway Maple Mulberry	75 5 10 5	20-30	DBH 0-3-cm, Health 3, Natural
5		Japanese Maple Bloodgood	100	25	20cm DBH, Health 3, Dripline 5m, Cultural
6		Norway Maple Little Leaf Linden Black Cherry	40 50 10	Sappling - 20 years	Understory volunteers
7		Yews	100	75	Health 3 Dripline 2m Cultural
8		Gold Tip Cypress	100	25	6cm DBH, Health 2, Dripline 6m, Cultural
9		Norway Spruce Norway Maple	37 63	75	30-50cm DBH, Health 3, Dripline 10m, Cultural
10		Cypress	100	50	36 cm DBH, Health 3, Diameter 6m, Cultural
11		Siberian Elm Chinese Chestnut Hybrid Black Walnut Cherry Mulberry Austrian Pine	70 5 (2 of them) 10 5 5 5	30	DBH 10-40cm, Health range 1-3, Mix of cultural & natural
12		Cypress White Fir	50 50	25	Health 3, Cultural

APPENDIX C: Tree Inventory Plans



Key Map NTS.



- ### Legend
- Dead Standing Tree
 - Removed/Revoked
 - Requested for Removal
 - Existing Natural Deciduous Tree
 - Existing Natural Coniferous Tree
 - Existing Cultural/Planted Deciduous Tree
 - Existing Cultural/Planted Coniferous Tree
 - Cultural/Planted Tree
 - Natural Tree
 - Cultural/Planted Trees Within 6m on Adjacent Properties
 - Natural Tree Within 6m on Adjacent Properties
 - Tree Grouping
 - Property Line

REVISION / ISSUE	BY	DATE
REVISION 1: TREE REMOVAL/REQUESTS UPDATE	KC	2024.03.12
Revision/Issue	By	Aspd

File Name: 161414045_L-1M_144_176_03132024_KB
Dwn. Dsgn. Chkd. YYYT.MM.DD

Permit-Seal

**PRELIMINARY
NOT FOR
CONSTRUCTION**

Not for permits, pricing or other official purposes. This document has not been completed or checked and is for general information or comment only.

Client/Project
SOLMAR (Niagara 2) Inc.

144 JOHN STREET EAST & 176 JOHN STREET EAST
NIAGARA-ON-THE-LAKE
ONTARIO, CANADA

Title
EXISTING TREE INVENTORY
FULL SITE

Project No. 161414045
Revision 1
Sheet 1 of 5
Scale 1:750
Drawing No. L-900A

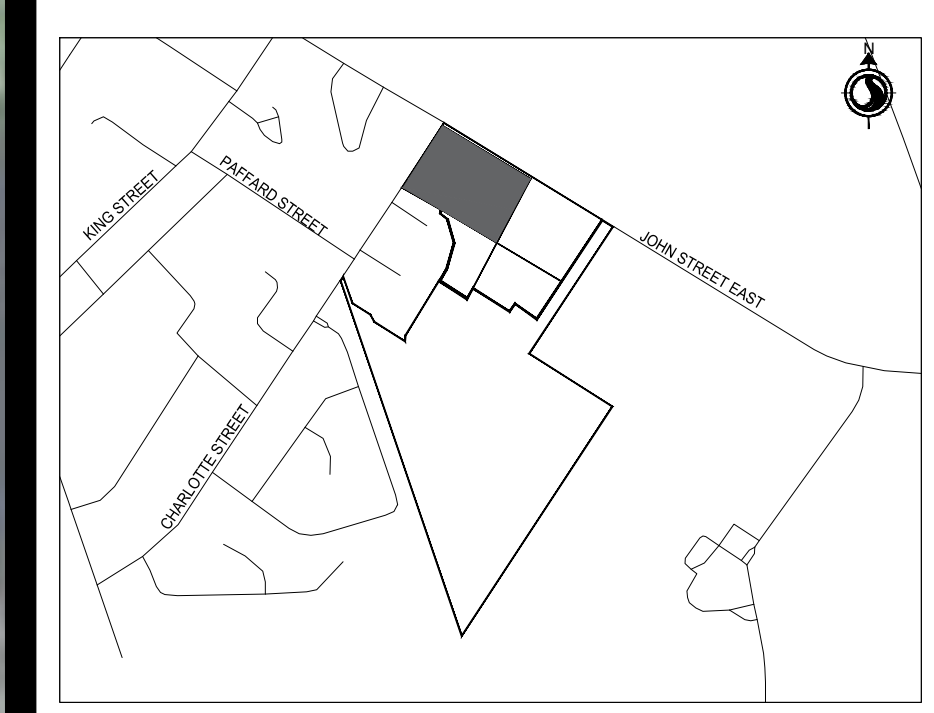
161414045_L-1M_144_176_03132024_KB.dwg
3/24/2024 8:32:38 PM by: David K. Emery



Copyright Reserved

The Contractor shall verify and be responsible for all dimensions. DO NOT scale the drawing
- any errors or omissions shall be reported to Stantec without delay.
The Copyrights to all designs and drawings are the property of Stantec. Reproduction or
use for any purpose other than that authorized by Stantec is forbidden.

Key Map NTS.



Legend

- Dead Standing Tree
- Removed/Revoked
- Requested for Removal
- Existing Natural Deciduous Tree
- Existing Natural Coniferous Tree
- Existing Cultural/Planted Tree
- Existing Cultural/Planted Coniferous Tree
- Cultural/Planted Tree
- Natural Tree
- Cultural/Planted Trees Within 6m on Adjacent Properties
- Natural Tree Within 6m on Adjacent Properties
- Tree Grouping
- Property Line

REVISION / ISSUE	BY	DATE
REVISION 1: TREE REMOVAL/REQUESTS UPDATE	KC	2024.03.12
Revision/Issue	LB/WB	YYYY.MM.DD
	Appd	

File Name: 161414045-LTM_144_176_03132024_K8
Dwn. Dsgn. Chkd. YYY.MM.DD

Permit-Seal

**PRELIMINARY
NOT FOR
CONSTRUCTION**

Not for permits, pricing or other official purposes. This document has not been completed or checked and is for general information or comment only.

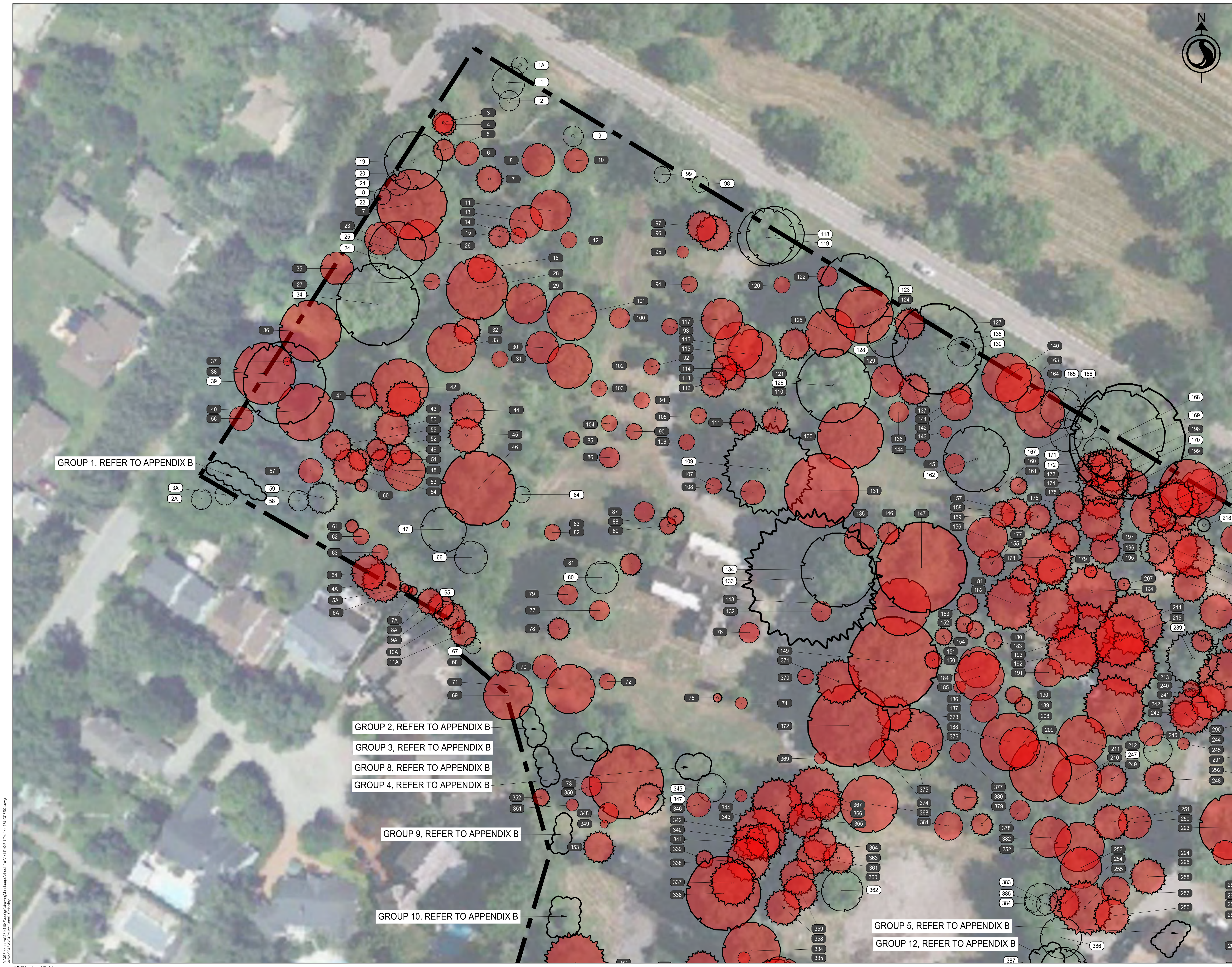
Client/Project
SOLMAR (Niagara 2) Inc.

144 JOHN STREET EAST & 176 JOHN STREET EAST
NIAGARA-ON-THE-LAKE

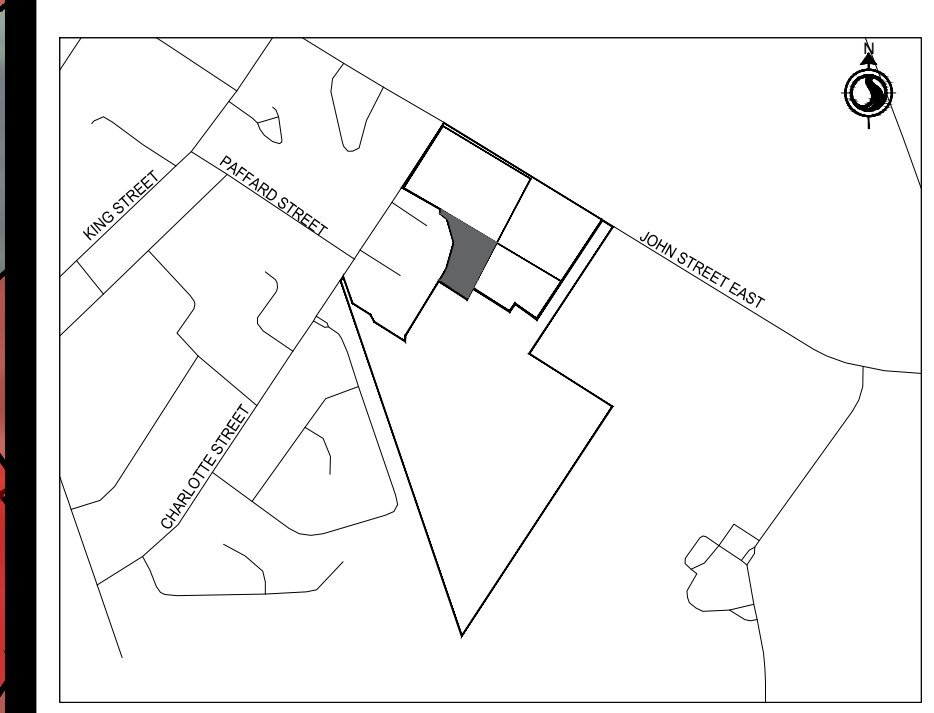
ONTARIO, CANADA

Title
EXISTING TREE INVENTORY
NORTH SECTION, 144 JOHN STREET EAST






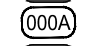

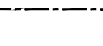


Project No. 161414045
Scale 1:400
Revision 1 Sheet 2 of 5
Drawing No. L-900B



V:\24\161414045\161414045-144_176_03132024-K8.dwg
 2024.03.12 10:00 AM
 ORIGINAL SHEET - ARCH D



Legend

-  Dead Standing Tree
-  Removed/Revoked
-  Requested for Removal
-  Existing Natural Deciduous Tree
-  Existing Natural Coniferous Tree
-  Existing Cultural/Planted Deciduous Tree
-  Existing Cultural/Planted Coniferous Tree
-  Cultural/Planted Tree
-  Natural Tree
-  Cultural/Planted Trees Within 6m on Adjacent Properties
-  Natural Tree Within 6m on Adjacent Properties
-  Tree Grouping
-  Property Line

REVISION 1: TREE REMOVAL/REQUESTS UPDATE	KC	LB/WB	2024.03.12
Revision/Issue	By	Appd	YYYY.MM.DD
File Name: 161414045-L-TM_144_176_03132024_K8	Dwn.	Dsgn.	2022.07.18
		Chkd.	YYYY.MM.DD

Permit-Seal

**PRELIMINARY
NOT FOR
CONSTRUCTION**

Not for permits, pricing or other official purposes. This document has not been completed or checked and is for general information or comment only.

Client/Project
SOLMAR (Niagara 2) Inc.

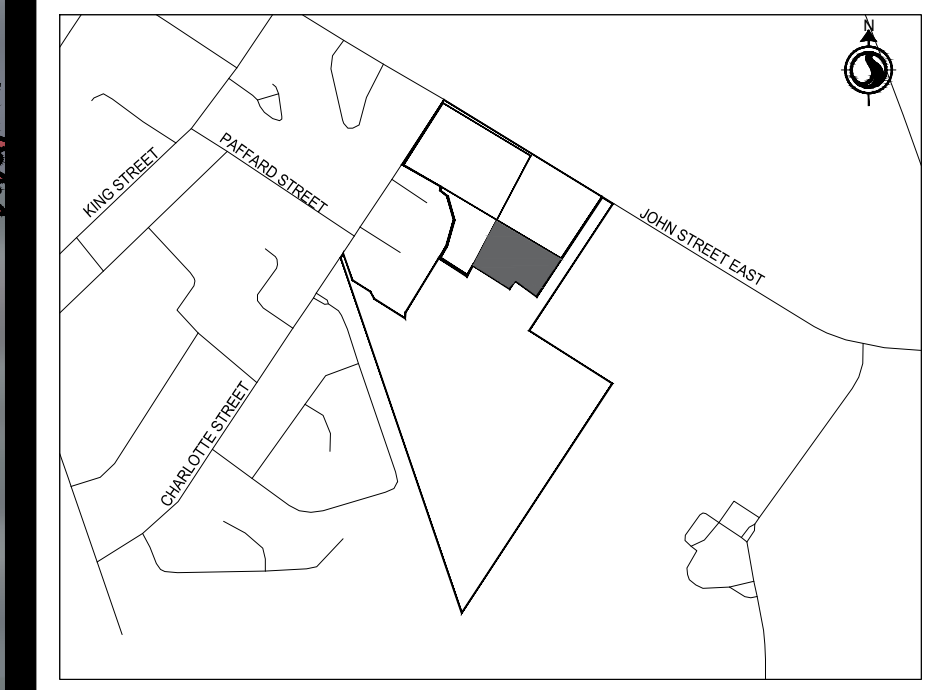
144 JOHN STREET EAST & 176 JOHN STREET EAST
NIAGARA-ON-THE-LAKE
ONTARIO, CANADA

Title
EXISTING TREE INVENTORY
SOUTH SECTION, 144 JOHN STREET EAST

Project No. 161414045
Scale 1:300

Revision 1
Sheet 3 of 5
Drawing No. L-900C





Legend

- Dead Standing Tree
- Removed/Revoked
- Requested for Removal
- Existing Natural Deciduous Tree
- Existing Natural Coniferous Tree
- Existing Cultural/Planted Deciduous Tree
- Existing Cultural/Planted Coniferous Tree
- Cultural/Planted Tree
- Natural Tree
- Cultural/Planted Trees Within 6m on Adjacent Properties
- Natural Tree Within 6m on Adjacent Properties
- Tree Grouping
- Property Line

REVISION	BY	DATE
REVISION 1: TREE REMOVAL/REQUESTS UPDATE	KC	2024.03.12
Revision/Issue	By	Appd
File Name: 161414045-LTM_144_176_03132024_K8	Dwn.	Dsgn.
	Chkd.	YYYY.MM.DD

Permit-Seal

**PRELIMINARY
NOT FOR
CONSTRUCTION**

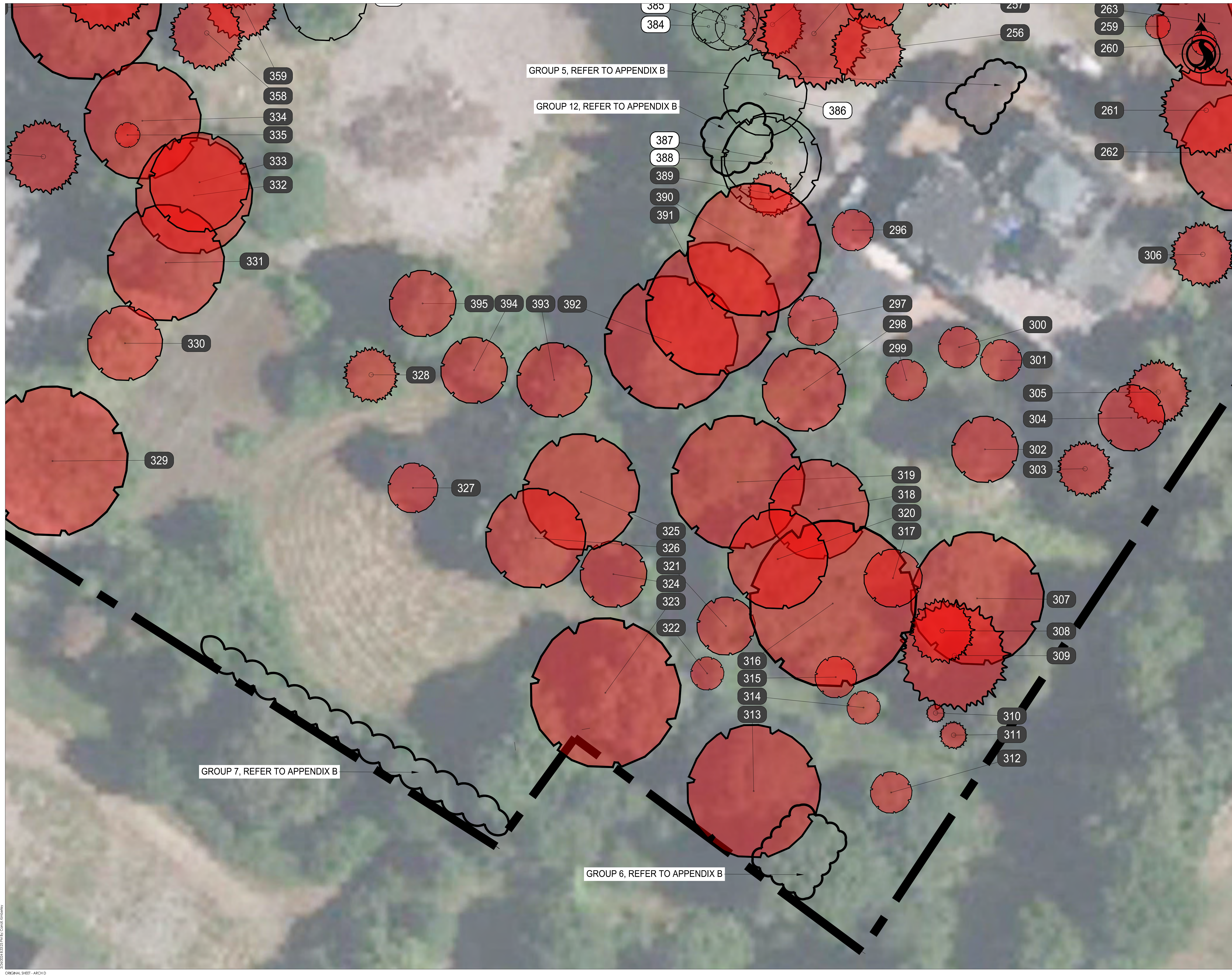
Not for permits, pricing or other official purposes. This document has not been completed or checked and is for general information or comment only.

Client/Project
SOLMAR (Niagara 2) Inc.

144 JOHN STREET EAST & 176 JOHN STREET EAST
NIAGARA-ON-THE-LAKE
ONTARIO, CANADA

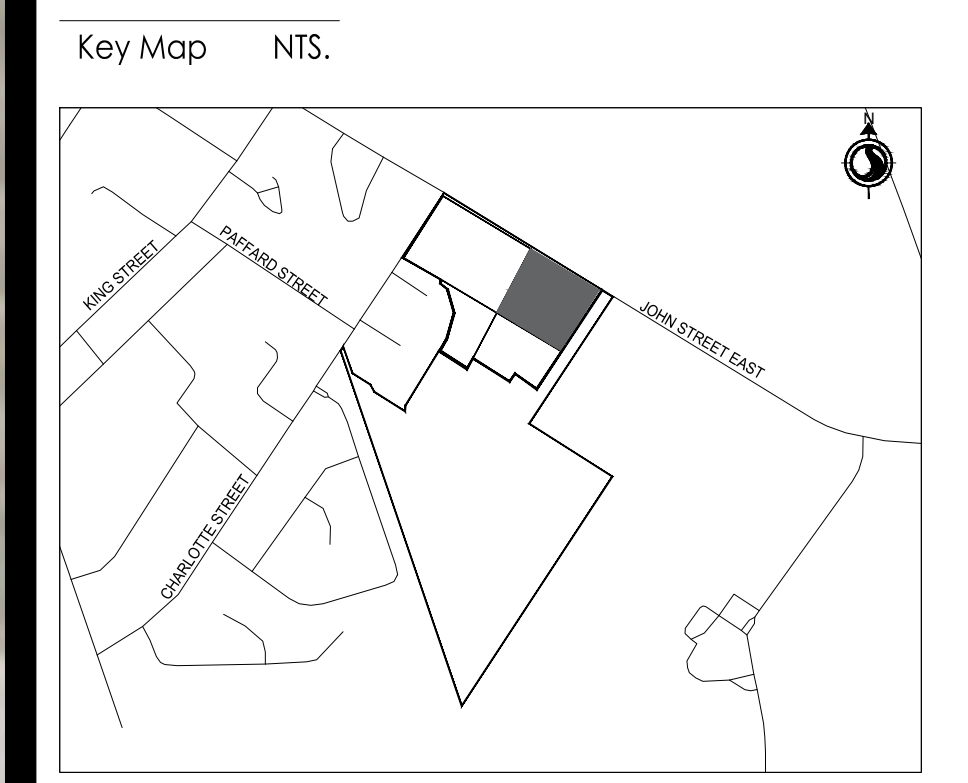
Title
EXISTING TREE INVENTORY
SOUTH SECTION, 176 JOHN STREET EAST

Project No. 161414045
Scale 1:200
Revision 1 Sheet 4 of 5 Drawing No. L-900D





Copyright Reserved
The Contractor shall verify and be responsible for all dimensions. DO NOT scale the drawing
- any errors or omissions shall be reported to Stantec without delay.
The Copyrights to all designs and drawings are the property of Stantec. Reproduction or use for any purpose other than that authorized by Stantec is forbidden.



Legend

- Dead Standing Tree
- Removed/Revoked
- Requested for Removal
- Existing Natural Deciduous Tree
- Existing Natural Coniferous Tree
- Existing Cultural/Planted Deciduous Tree
- Existing Cultural/Planted Coniferous Tree
- Cultural/Planted Tree
- Natural Tree
- Cultural/Planted Trees Within 6m on Adjacent Properties
- Natural Tree Within 6m on Adjacent Properties
- Tree Grouping
- Property Line

REVISION	DESCRIPTION	BY	DATE
1	TREE REMOVAL/REQUESTS UPDATE	KC	2024.03.12
Revision/Issue		LB/WB Appd	YYYY.MM.DD
File Name: 161414045-LTM_144_176_03132024_K8		DW/WB Chkd.	2022.07.18
		Dwn.	YYYY.MM.DD

Permit-Seal

**PRELIMINARY
NOT FOR
CONSTRUCTION**

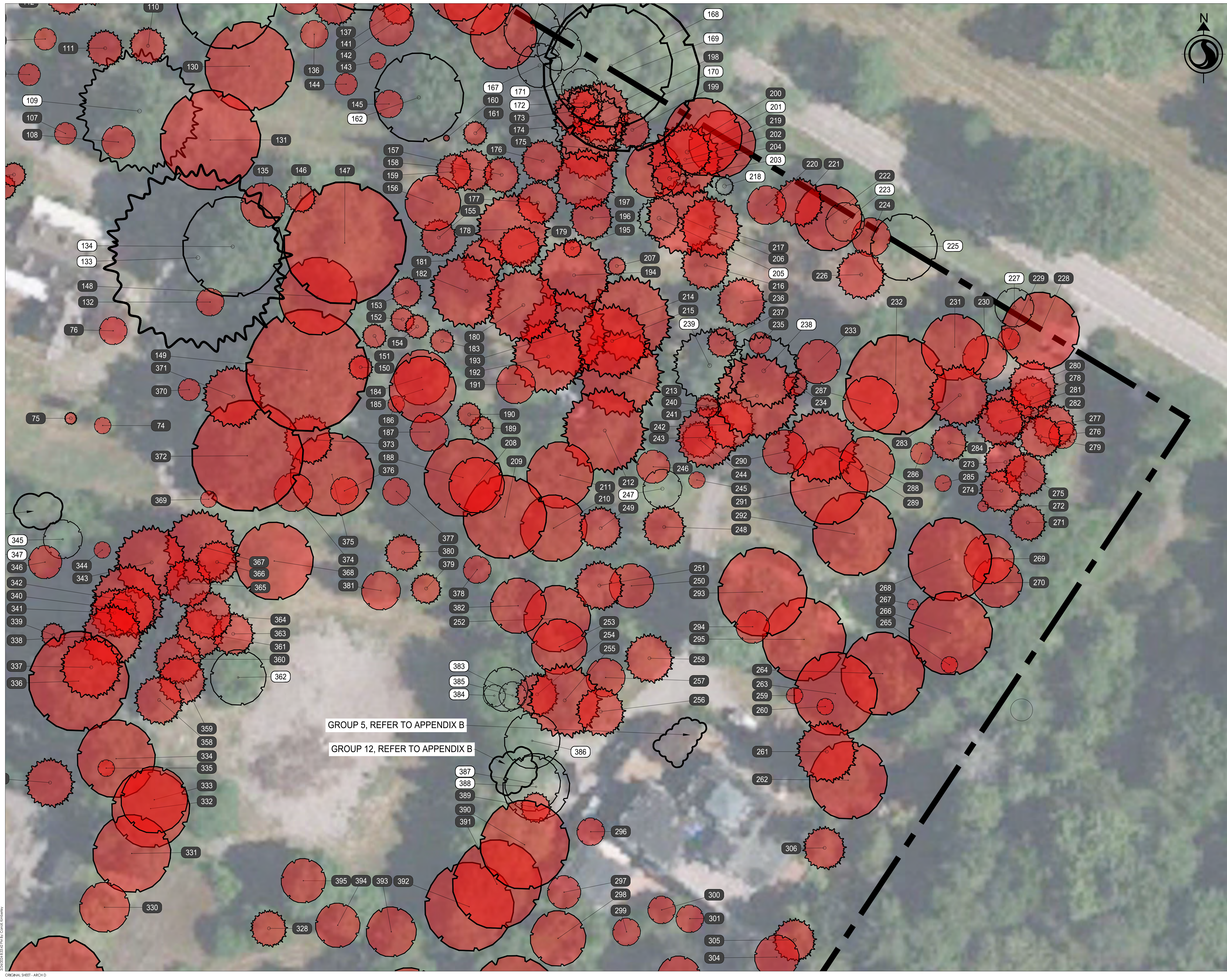
Not for permits, pricing or other official purposes. This document has not been completed or checked and is for general information or comment only.

Client/Project
SOLMAR (Niagara 2) Inc.

144 JOHN STREET EAST & 176 JOHN STREET EAST
NIAGARA-ON-THE-LAKE
ONTARIO, CANADA

Title
EXISTING TREE INVENTORY
NORTH SECTION, 176 JOHN STREET EAST

Project No. 161414045
Scale 1:300
Revision 1 of 5
Sheet 5 of 5
Drawing No. L-900E



GROUP 5, REFER TO APPENDIX B

GROUP 12, REFER TO APPENDIX B

ORIGINAL SHEET - ARCH D



Copyright Reserved

The Contractor shall verify and be responsible for all dimensions. DO NOT scale the drawing - any errors or omissions shall be reported to Stantec without delay.
 The Copyrights to all designs and drawings are the property of Stantec. Reproduction or use for any purpose other than that authorized by Stantec is forbidden.

Key Map NTS.



Legend

- Dead Standing Tree
- Existing Natural Deciduous Tree
- Existing Natural Coniferous Tree
- Existing Cultural/Planted Deciduous Tree
- Existing Cultural/Planted Coniferous Tree
- Cultural/Planted Tree
- Natural Tree
- Cultural/Planted Trees Within 5m on Adjacent Properties
- Natural Trees Within 5m on Adjacent Properties
- Tree Grouping
- Tree Grouping To Be Removed
- Tree To Be Removed
- Schematic Tree Protection Fencing (TD-1)
- Schematic Tree Protection Hoarding (TD-2)

CRITICAL NOTES:

- THIS STATUS FOR PRESERVATION OR REMOVAL, PRELIMINARY ONLY. FINAL TREE PRESERVATION/REMOVAL STATUS TO BE BASED ON FINAL ENGINEERING DRAWINGS, INCLUDING GRADING, LAYOUT AND CONCRETE UTILITY PLAN.
- THE PRESERVATION FENCING/BOARDING ONLY TO BE COORDINATED WITH ARCHITECTURAL, CONSERVATIONIST TO MAXIMIZE COORDINATION BETWEEN BUILT HERITAGE CONSERVATION MEASURES AND TREE PRESERVATION. THIS IS SPECIFIC TO TREE PRESERVATION AND DOES NOT APPLY TO OTHER PRESERVATION MEASURES.
- CONSERVATION OF THE TREE HOUSE AND RELOCATION OF THE BATH HOUSE POLY. NOTE THAT THE DESTRUCTION OF TREE PROTECTION FENCING IS SCHEMATIC ONLY SHOWING THE MINIMUM DISTANCE FROM THE TRUNK. ACTUAL INSTALLATION MAY VARY TO IMPROVE EFFICIENCIES.
- LAYOUT OF ROAD AND PEDESTRIAN PATH OFF MAIN STREET EAST. AS THE GOAL IS TO MAXIMIZE TREE PRESERVATION IN THE "HANDLE" AND SUSTAINABLE EFFORTS, WHERE WARRANTED, THE PEDESTRIAN PATH AND MICRO-GRADING MAY BE ADJUSTED DURING TAKE-OUT IF THERE IS AN OPPORTUNITY TO INCREASE THE NUMBER OF PRESERVED TREES. TREE PRESERVATION FENCING MAY BE ADJUSTED ON SITE TO REFLECT THESE PRESERVATION EFFORTS.

Revision/Issue

File Name:	161414045_L-IV, with eng site plan_0318.22	Dwn.	Dsgn.	Chkd.	YYYY.MM.DD
					2022.03.10

Permit-Seal

**PRELIMINARY
 NOT FOR
 CONSTRUCTION**

Not for permits, pricing or other official purposes. This document has not been completed or checked and is for general information or comment only.

Client/Project
SOLMAR

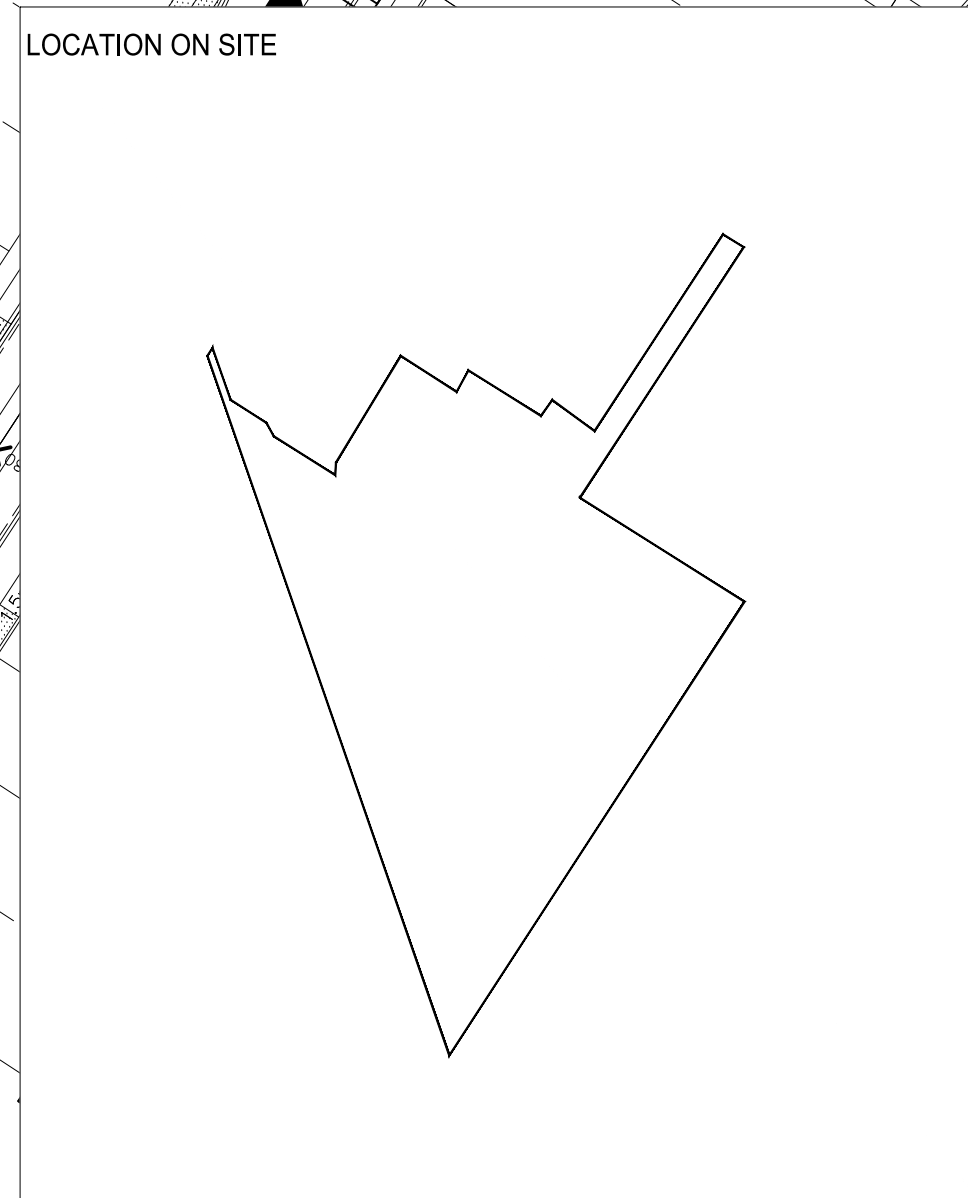
200 JOHN STREET EAST & 588 CHARLOTTE STREET
 NIAGARA-ON-THE-LAKE

ONTARIO, CANADA

Title
**EXISTING TREE INVENTORY
 AND PRESERVATION PLAN**
 South Section, 588 Charlotte Street

Project No. 161414045 Scale 1:500

Revision 7 of 10 Sheet Drawing No.



W:\04\Arch\161414045\Drawings\161414045_L-IV, with eng site plan_0318.22.dwg
 161414045.dwg
 2022.03.10



Copyright Reserved

The Contractor shall verify and be responsible for all dimensions. DO NOT scale the drawing - any errors or omissions shall be reported to Stantec without delay.
The Copyrights to all designs and drawings are the property of Stantec. Reproduction or use for any purpose other than that authorized by Stantec is forbidden.

Key Map NTS.



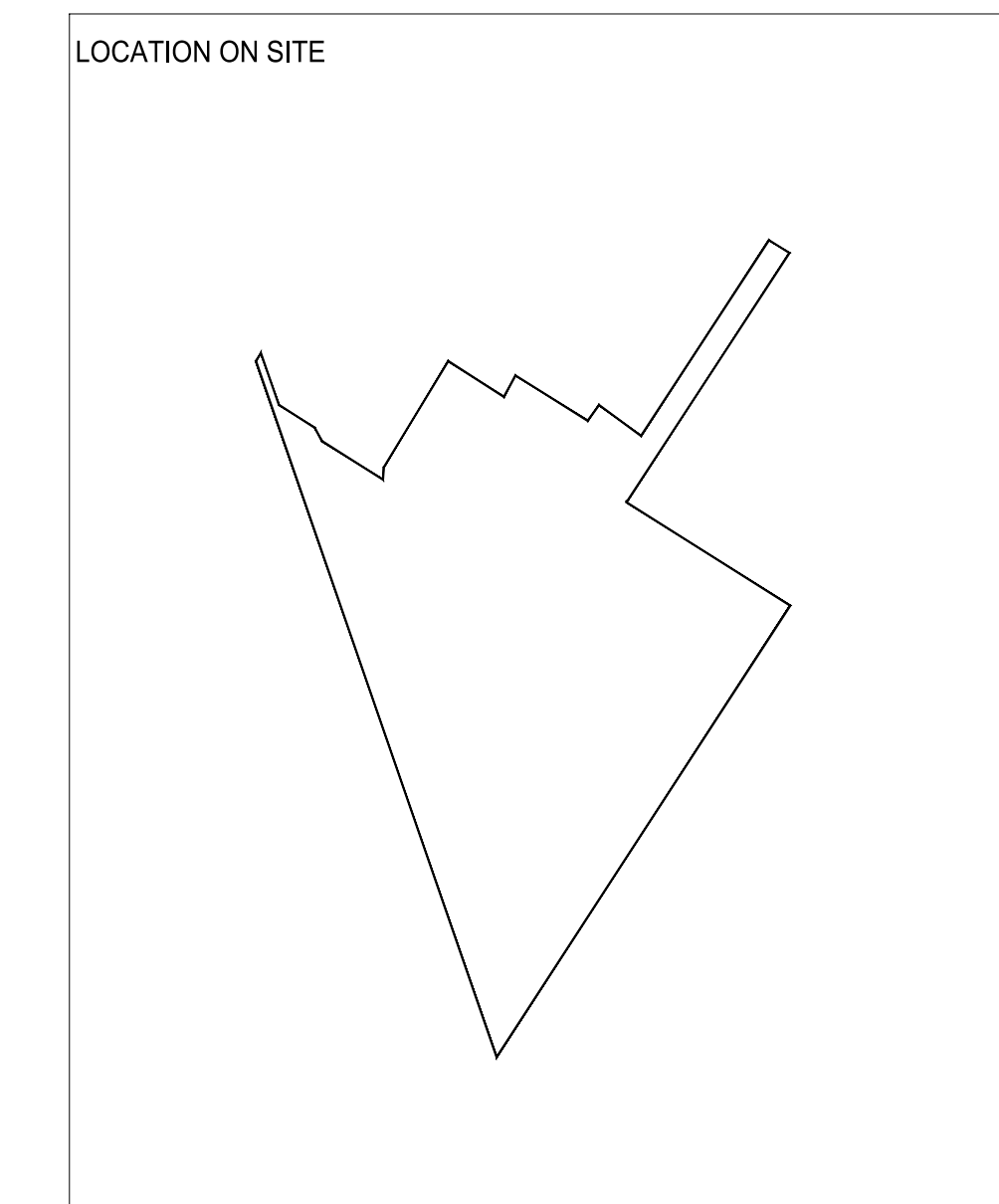
Legend

- Dead Standing Tree
- Existing Natural Deciduous Tree
- Existing Natural Coniferous Tree
- Existing Cultural/Planted Deciduous Tree
- Existing Cultural/Planted Coniferous Tree
- Cultural/Planted Tree
- Natural Tree
- Cultural/Planted Trees Within 5m on Adjacent Properties
- Natural Tree Within 5m on Adjacent Properties
- Tree Grouping
- Tree Grouping To Be Removed
- Tree To Be Removed
- Schematic Tree Protection Fencing (TD-1)
- Schematic Tree Protection Hoarding (TD-2)

CRITICAL NOTES:
 1. TREE STATUS FOR PRESERVATION OR REMOVAL PRELIMINARY ONLY. FINAL TREE PRESERVATION/REMOVAL STATUS TO BE BASED ON FINAL ENGINEERING DRAWINGS, INCLUDING GRADING, LAYOUT AND COMPOSITE UTILITY PLANS.
 2. TREE PRESERVATION FENCING PRELIMINARY ONLY. TO BE COORDINATED WITH ARCHITECTURAL CONSERVATION TO MAXIMIZE COORDINATION BETWEEN BUILT HERITAGE CONSERVATION MEASURES AND TREE PRESERVATION. THIS IS SPECIFIC TO TREE PRESERVATION ALONG WITH ARCHITECTURAL CONSERVATION MEASURES AND THE HERITAGE FRAME CONSERVATION OF THE TEA HOUSE AND RELICION OF THE BATH HOUSE ONLY. NOTE THAT THE DEPICTION OF TREE PROTECTION FENCING IS SCHEMATIC ONLY SHOWING THE MINIMUM DISTANCE FROM THE TREE TRUNK. ACTUAL INSTALLATION MAY VARY TO IMPROVE EFFICIENCIES.
 3. LAYOUT OF ROAD AND PEDESTRIAN PATH OFF JOHN STREET EAST. AS THE GOAL IS TO MAXIMIZE TREE PRESERVATION IN THE "HANDLE" AND SUSTAINABLE EFFORTS, WHERE WARRANTED, THE PEDESTRIAN PATH AND MICRO GRADING MAY BE ADJUSTED DURING STAKE OUT IF THERE IS AN OPPORTUNITY TO INCREASE THE NUMBER OF PRESERVED TREES. TREE PRESERVATION FENCING MAY BE ADJUSTED ON SITE TO REFLECT THESE PRESERVATION EFFORTS.

Table 17: Inventoried Tree Groupings

Group #	Botanical Name	Common Name	Percentage	Approximate Age (Years)	Trees to be preserved (Yes, No, Partial, or To Be Relocated)
1A	<i>Carya laciniosa</i>	Shell bark Hickory	98	75-100	Yes
	<i>Platanus occidentalis</i>	Sycamore (1 tree)	2		
1	<i>Populus deltoides</i>	Cottonwood (1 tree)	2	30	Partial
	<i>Fraxinus americana</i>	White Ash	49		
	<i>Acer saccharinum</i>	Silver maple	49		
2A	<i>Fraxinus americana</i>	White Ash	35	20-50	Yes
	<i>Quercus alba</i>	White Oak	15		
	<i>Tilia americana</i>	Linden	2		
	<i>Prunus sp.</i>	Sweet Cherry	2		
	<i>Pyrus sp.</i>	Pear	1		
	<i>Carya ovata</i>	Hickory	5		
	<i>Ulmus americana</i>	Elm	10		
	<i>Juglans nigra</i>	Black Walnut	20		
	<i>Acer negundo</i>	Manitoba Maple	10		
2	<i>Quercus alba</i>	White Oak	20	20-150	Yes
	<i>Crataegus sp.</i>	Hawthorn	5		
	<i>Fraxinus americana</i>	White Ash	10		
	<i>Ulmus americana</i>	Elm	5		
	<i>Carya ovata</i>	Shagbark Hickory	35		
	<i>Quercus palustris</i>	Pin Oak	5		
	<i>Populus deltoides</i>	Cottonwood	5		
	<i>Prunus serotina</i>	Black Cherry	5		
	<i>Tilia americana</i>	Linden	5		
<i>Gleditsia triacanthos</i>	Honey Locust	5			
3	<i>Pinus strobus</i>	White Pine	7	20-75	No
	<i>Picea abies</i>	Norway Spruce	3		
	<i>Fraxinus americana</i>	White Ash	65		
	<i>Quercus alba</i>	White Oak	10		
	<i>Quercus palustris</i>	Pin Oak	10		
	<i>Juglans nigra</i>	Black Walnut	5		
4	<i>Pinus nigra</i>	Austrian Pine	80	27	Yes
	<i>Picea pungens</i>	Blue Spruce	5		
	<i>Pinus strobus</i>	White Pine	5		
	<i>Ulmus pumila</i>	Siberian Elm	2		
	<i>Pinus sylvestris</i>	Scots Pine	3		
	<i>Picea glauca</i>	White Spruce	3		
	<i>Salix discolor</i>	Pussy Willow	2		
5	<i>Syringa sp.</i>	Lilac	100	Existing trunks 30 years, possible regeneration	TBR
6	<i>Prunus pissardii nigra</i>	Purple Plum	100	40	Yes



Revision/Issue	By	Appd	YYYY.MM.DD

File Name: 161414045_L-1M_with eng site plan_0300_22 Dwn. Dsgn. Chkd. DW/WS 2022.03.10 YYYT.MM.DD

Permit-Seal

**PRELIMINARY
NOT FOR
CONSTRUCTION**

Not for permits, pricing or other official purposes. This document has not been completed or checked and is for general information or comment only.

Client/Project
SOLMAR

200 JOHN STREET EAST & 588 CHARLOTTE STREET
NIAGARA-ON-THE-LAKE
ONTARIO, CANADA

Title
**EXISTING TREE INVENTORY
AND PRESERVATION PLAN
TREE INVENTORY CHARTS**

Project No. 161414045 Scale
Revision Sheet 9 of 10 Drawing No. **L-900H**



Copyright Reserved
The Contractor shall verify and be responsible for all dimensions. DO NOT scale the drawing - any errors or omissions shall be reported to Stantec without delay.
The Copyrights to all designs and drawings are the property of Stantec. Reproduction or use for any purpose other than that authorized by Stantec is forbidden.

Key Map N.T.S.



Legend

- Dead Standing Tree
- Existing Natural Deciduous Tree
- Existing Natural Coniferous Tree
- Existing Cultural/Planted Deciduous Tree
- Existing Cultural/Planted Coniferous Tree
- Cultural/Planted Tree
- Natural Tree
- Cultural/Planted Trees Within 5m on Adjacent Properties
- Natural Tree Within 5m on Adjacent Properties
- Tree Grouping
- Tree Grouping To Be Removed
- Tree To Be Removed
- Schematic Tree Protection Fencing (TD-1)
- Schematic Tree Protection Hoarding (TD-2)

CRITICAL NOTES:
1. TREE STATUS FOR PRESERVATION OR REMOVAL PRELIMINARY ONLY. FINAL TREE PRESERVATION/REMOVAL STATUS TO BE BASED ON FINAL ENGINEERING DRAWINGS, INCLUDING GRADING, LAYOUT AND COMPOSITE UTILITY PLAN.
2. TREE PRESERVATION FENCING PRELIMINARY ONLY. TO BE COORDINATED WITH ARCHITECTURAL CONSERVATION TO MAXIMIZE COORDINATION BETWEEN BUILT HERITAGE CONSERVATION MEASURES AND TREE PRESERVATION. THIS IS SPECIFIC TO TREE PRESERVATION AND DOES NOT APPLY TO ALL BUILT HERITAGE PRESERVATION.
3. CONSERVATION OF THE TREE HOUSE AND RELOCATION OF THE BATH HOUSE IS POLY. NOTE THAT THE DESTRUCTION OF TREE PROTECTION FENCING IS SCHEMATIC ONLY SHOWING THE MINIMUM DISTANCE FROM THE TREE TRUNK. ACTUALLY INSTALLATION MAY VARY TO IMPROVE EFFICIENCIES.
4. LAYOUT OF ROAD AND PEDESTRIAN PATH OFF JOHN STREET EAST. AS THE GOAL IS TO MAXIMIZE TREE PRESERVATION IN THE "HANDS" AND SUSTAINABLE EFFORTS, WHERE WARRANTED, THE PEDESTRIAN PATH AND MICRO GRADING MAY BE ADJUSTED DURING/BEFORE OUT IF THERE IS AN OPPORTUNITY TO INCREASE THE NUMBER OF PRESERVED TREES. TREE PRESERVATION FENCING MAY BE ADJUSTED ON SITE TO REFLECT THESE PRESERVATION EFFORTS.

Rev	By	Appd	YYYY.MM.DD

Revision/Issue By Appd YYYY.MM.DD

File Name: 161414045_L-1M_w/eng site plan_0308.22 Dwn. Dsgn. Chkd. DW/WS 2022.03.10
YYYY.MM.DD

Permit-Seal

**PRELIMINARY
NOT FOR
CONSTRUCTION**

Not for permits, pricing or other official purposes. This document has not been completed or checked and is for general information or comment only.

Client/Project
SOLMAR

200 JOHN STREET EAST & 588 CHARLOTTE STREET
NIAGARA-ON-THE-LAKE

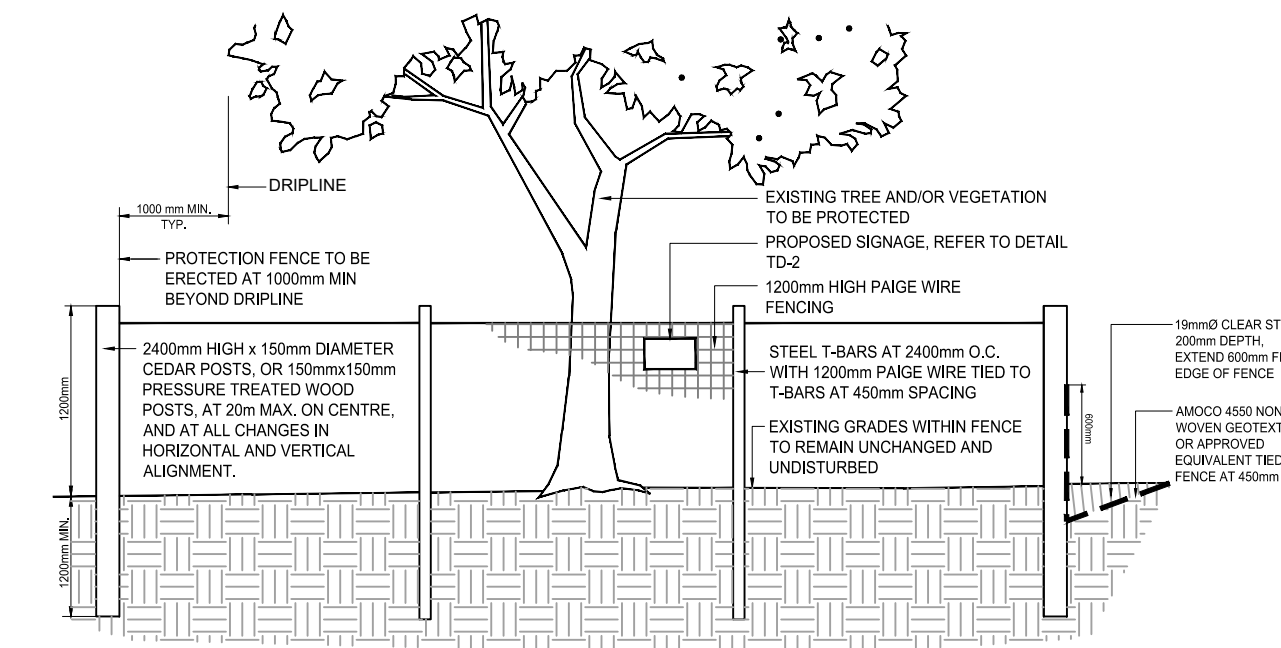
ONTARIO, CANADA

Title

**EXISTING TREE INVENTORY
AND PRESERVATION PLAN
DETAILS**

Project No. 161414045 Scale 1:1250

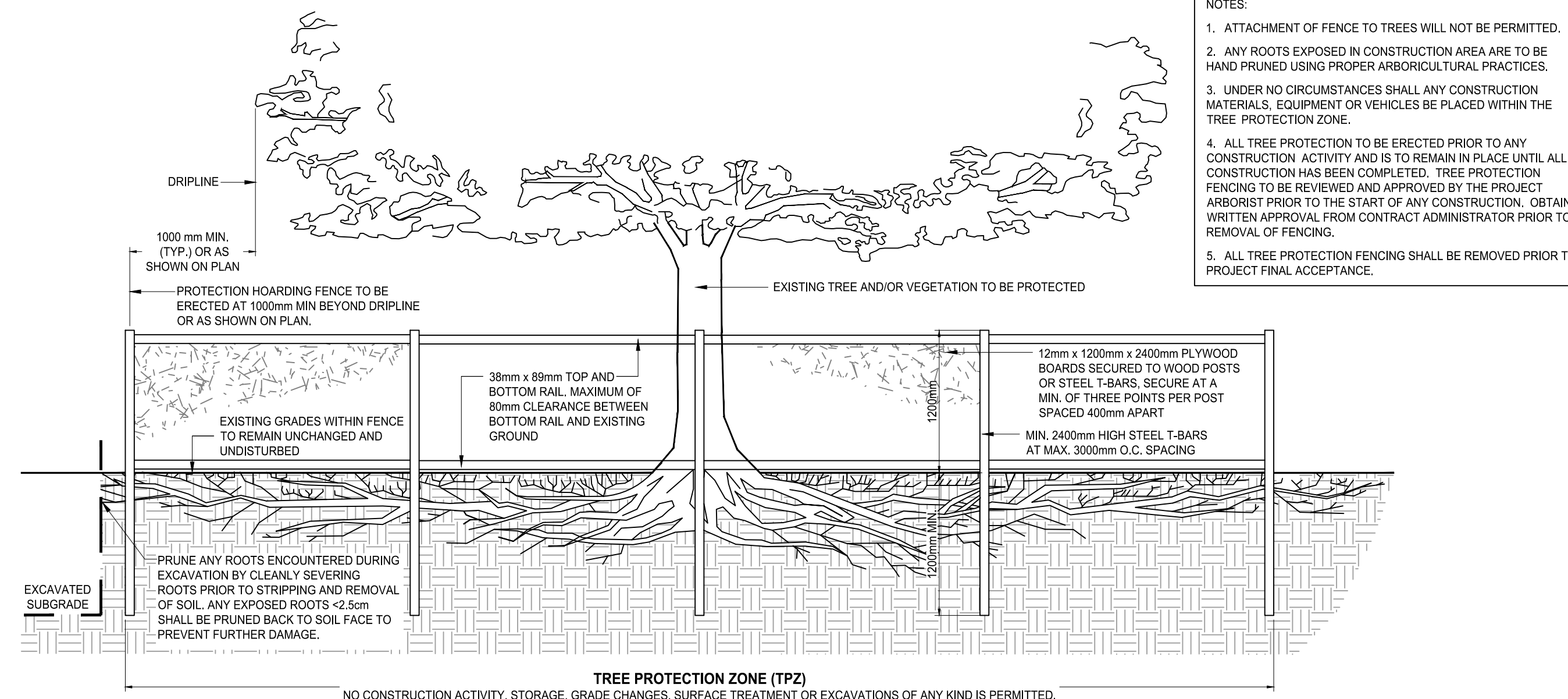
Revision Sheet 10 of 10 Drawing No. L-901



- NOTES:
- ATTACHMENT OF FENCE TO TREES WILL NOT BE PERMITTED.
 - ANY EXPOSED ROOTS ARE TO BE HAND PRUNED USING PROPER ARBORICULTURAL PRACTICES.
 - UNDER NO CIRCUMSTANCES SHALL ANY CONSTRUCTION MATERIALS, EQUIPMENT OR VEHICLES BE PLACED WITHIN THE TREE PROTECTION ZONE.
 - ALL TREE PROTECTION TO BE ERECTED PRIOR TO ANY CONSTRUCTION ACTIVITY AND IS TO REMAIN IN PLACE UNTIL ALL CONSTRUCTION HAS BEEN COMPLETED. OBTAIN WRITTEN APPROVAL FROM CONTRACT ADMINISTRATOR PRIOR TO REMOVAL OF FENCING.
 - ALL TREE PROTECTION FENCING SHALL BE REMOVED PRIOR TO PROJECT FINAL ACCEPTANCE.
 - SEDIMENT CONTROL FENCING WILL BE INSTALLED INDEPENDENTLY UNDER DIRECTION OF THE ENVIRONMENTAL INSPECTOR.

TD 1 PROPOSED TREE PROTECTION FENCING N.T.S.

- NOTES:
- ATTACHMENT OF FENCE TO TREES WILL NOT BE PERMITTED.
 - ANY ROOTS EXPOSED IN CONSTRUCTION AREA ARE TO BE HAND PRUNED USING PROPER ARBORICULTURAL PRACTICES.
 - UNDER NO CIRCUMSTANCES SHALL ANY CONSTRUCTION MATERIALS, EQUIPMENT OR VEHICLES BE PLACED WITHIN THE TREE PROTECTION ZONE.
 - ALL TREE PROTECTION TO BE ERECTED PRIOR TO ANY CONSTRUCTION ACTIVITY AND IS TO REMAIN IN PLACE UNTIL ALL CONSTRUCTION HAS BEEN COMPLETED. TREE PROTECTION FENCING TO BE REVIEWED AND APPROVED BY THE PROJECT ARBORIST PRIOR TO THE START OF ANY CONSTRUCTION. OBTAIN WRITTEN APPROVAL FROM CONTRACT ADMINISTRATOR PRIOR TO REMOVAL OF FENCING.
 - ALL TREE PROTECTION FENCING SHALL BE REMOVED PRIOR TO PROJECT FINAL ACCEPTANCE.



TD 2 PROPOSED TREE PROTECTION HOARDING FENCING N.T.S.

