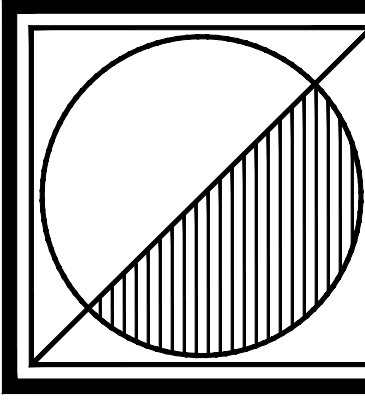
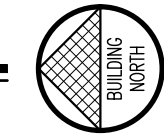


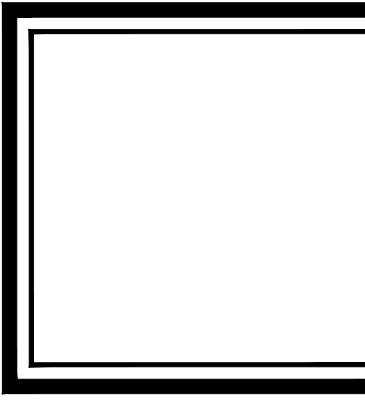
**BASEMENT FLOOR PLAN**

SCALE: 1:200



**Peter J. Lesdow**  
architect

ARCHITECT: Peter J. Lesdow, License No. 1117, Niagara Falls, Ontario, L2E 6C4  
REGISTERED: 1988, 2011, 2015, 2018, 2021, 2022



**RESIDENCE 1**  
**FLOOR PLANS**  
**RESIDENCES at**  
**200 John St. & 856 Charlotte St.**

DATE	#	REVISIONS	DATE	REVISIONS
Apr. 10/20		FOR COORDINATION		
Apr. 13/20		FOR ZONING SUBMISSION		

**RITZ-CARLTON HOTEL,  
SPA & RESIDENCES**

144, 176 & 200 John St., 856 Charlotte St.  
Niagara-on-the-Lake, Ontario

DATE: Nov. 18/ 22  
SCALE: 1:200  
DRAWN BY: MW/OD  
CHECK BY: P.JL

25 - 01

**A301**



**WEST ELEVATION**

SCALE: 1:200



**EAST ELEVATION**

SCALE: 1:200



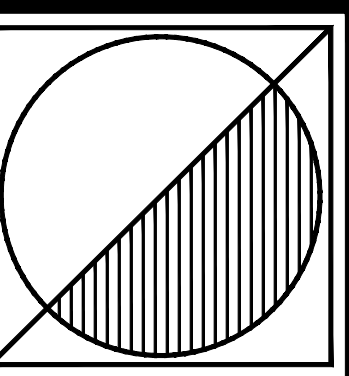
**NORTH ELEVATION**

SCALE: 1:200



**SOUTH ELEVATION**

SCALE: 1:200



Peter J. Lesdow  
architect



PETER J. LESDOW  
LICENSE  
3745

**RESIDENCE 1  
ELEVATIONS**  
RESIDENCES at  
200 John St. & 856 Charlotte St.

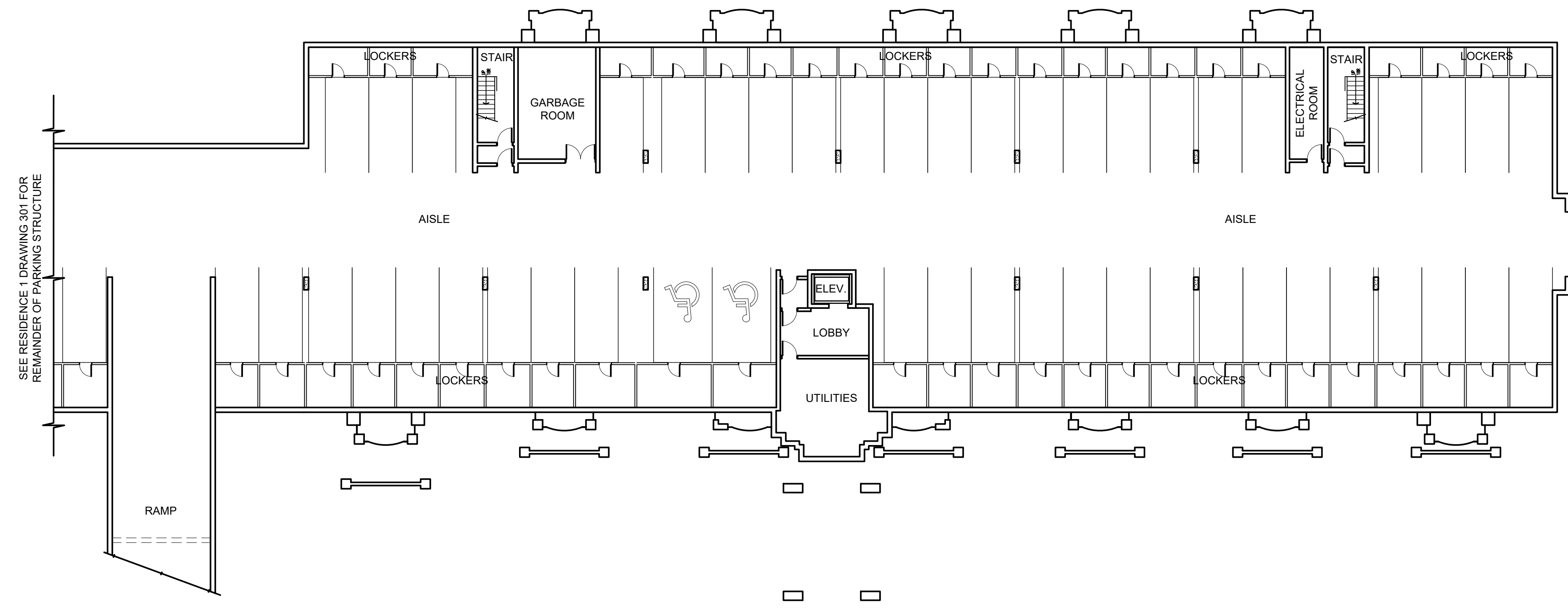
DATE	REVISIONS	DATE	REVISIONS
Nov. 18/20	FOR COORDINATION		
Nov. 19/20	FOR REZONING SUBMISSION		

**RITZ-CARLTON HOTEL,  
SPA & RESIDENCES**  
144, 176 & 200 John St., 856 Charlotte St.  
Niagara-on-the-Lake, Ontario

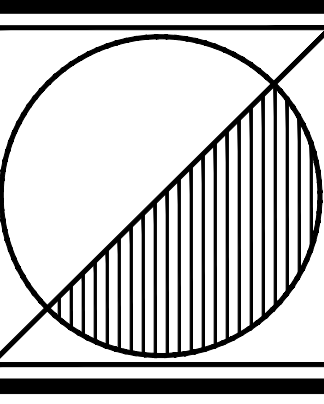
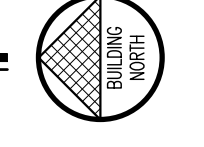
DATE: Nov. 18/22  
SCALE: 1:200  
DRAWN BY: MW/OD  
CHECK BY: PJL

25 - 01

**A302**



**BASEMENT FLOOR PLAN**  
SCALE: 1:200



**Peter J. Lesdow**  
architect  
ARCHITECTURE: 100-111 Niagara Falls, Ontario L2E 8C6  
TEL: 905.351.1111 FAX: 905.351.1111



**PETER J. LESDOW**  
LICENSE  
3745

**RESIDENCE 2**  
FLOOR PLANS  
RESIDENCES at  
200 John St. & 856 Charlotte St.

DATE	REVISIONS	DATE	REVISIONS
Nov. 10/20	FOR COORDINATION		
Nov. 17/20	FOR REZONING SUBMISSION		

**RITZ-CARLTON HOTEL,  
SPA & RESIDENCES**  
144, 176 & 200 John St., 856 Charlotte St.  
Niagara-on-the-Lake, Ontario

DATE: Nov. 18/ 22  
SCALE: 1:200  
DRAWN BY: MW/OD  
CHECK BY: P.JL

25 - 01

**A303**



**WEST ELEVATION**

SCALE: 1:200



**EAST ELEVATION**

SCALE: 1:200



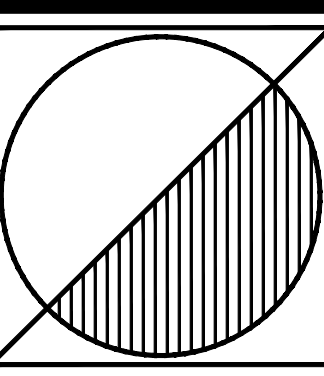
**NORTH ELEVATION**

SCALE: 1:200



**SOUTH ELEVATION**

SCALE: 1:200



Peter J. Lesdow  
architect



PETER J. LESDOW  
LICENSE  
3745

**RESIDENCE 2  
ELEVATIONS**  
RESIDENCES at  
200 John St. & 856 Charlotte St.

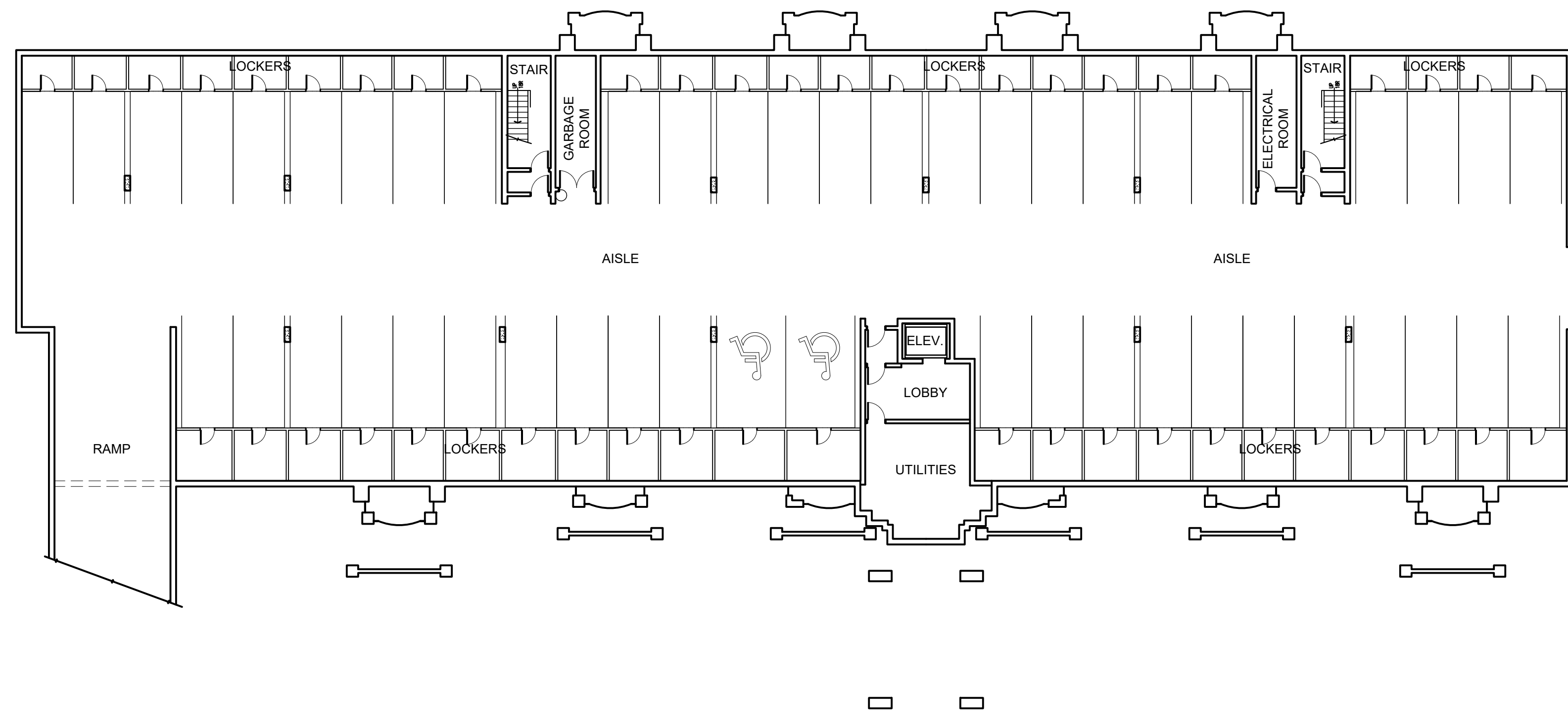
DATE	REVISIONS	DATE	REVISIONS
Nov. 18/20	FOR COORDINATION		
Nov. 19/20	FOR REZONING SUBMISSION		

**RITZ-CARLTON HOTEL,  
SPA & RESIDENCES**  
144, 176 & 200 John St., 856 Charlotte St.  
Niagara-on-the-Lake, Ontario

DATE: Nov. 18/22  
SCALE: 1:200  
DRAWN BY: MW/OD  
CHECK BY: PJL

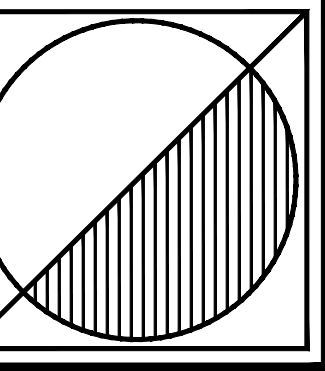
25 - 01

**A304**



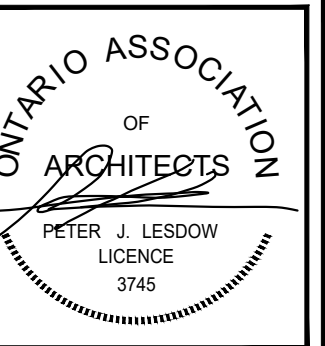
**BASEMENT FLOOR PLAN**

SCALE: 1:200



Peter J. Lesdow  
architect

ARCHITECTURE: 1991-11-11, Niagara Falls, Ontario, L2E 8E2  
TEL: 905.255.1111 FAX: 905.255.1111



**RESIDENCE 3  
FLOOR PLANS**  
RESIDENCES at  
200 John St. & 856 Charlotte St.

DATE	#	REVISIONS	DATE	REVISIONS
Apr. 10/20	1	FOR COORDINATION		
Apr. 13/20	2	FOR REZONING SUBMISSION		

**RITZ-CARLTON HOTEL,  
SPA & RESIDENCES**  
144, 176 & 200 John St., 856 Charlotte St.  
Niagara-on-the-Lake, Ontario

DATE: Nov. 18/ 22  
SCALE: 1:200  
DRAWN BY: MW/OD  
CHECK BY: P.J.L.

25 - 01

**A305**



**NORTH ELEVATION**

SCALE: 1:200



**SOUTH ELEVATION**

SCALE: 1:200



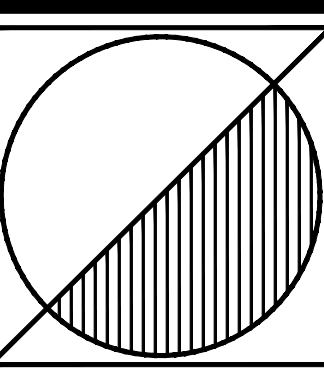
**EAST ELEVATION**

SCALE: 1:200



**WEST ELEVATION**

SCALE: 1:200



Peter J. Lesdow  
architect



PETER J. LESDOW  
LICENSE  
3745

**RESIDENCE 3  
ELEVATIONS**  
RESIDENCES at  
200 John St. & 856 Charlotte St.

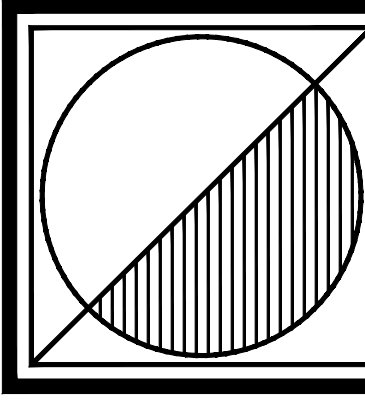
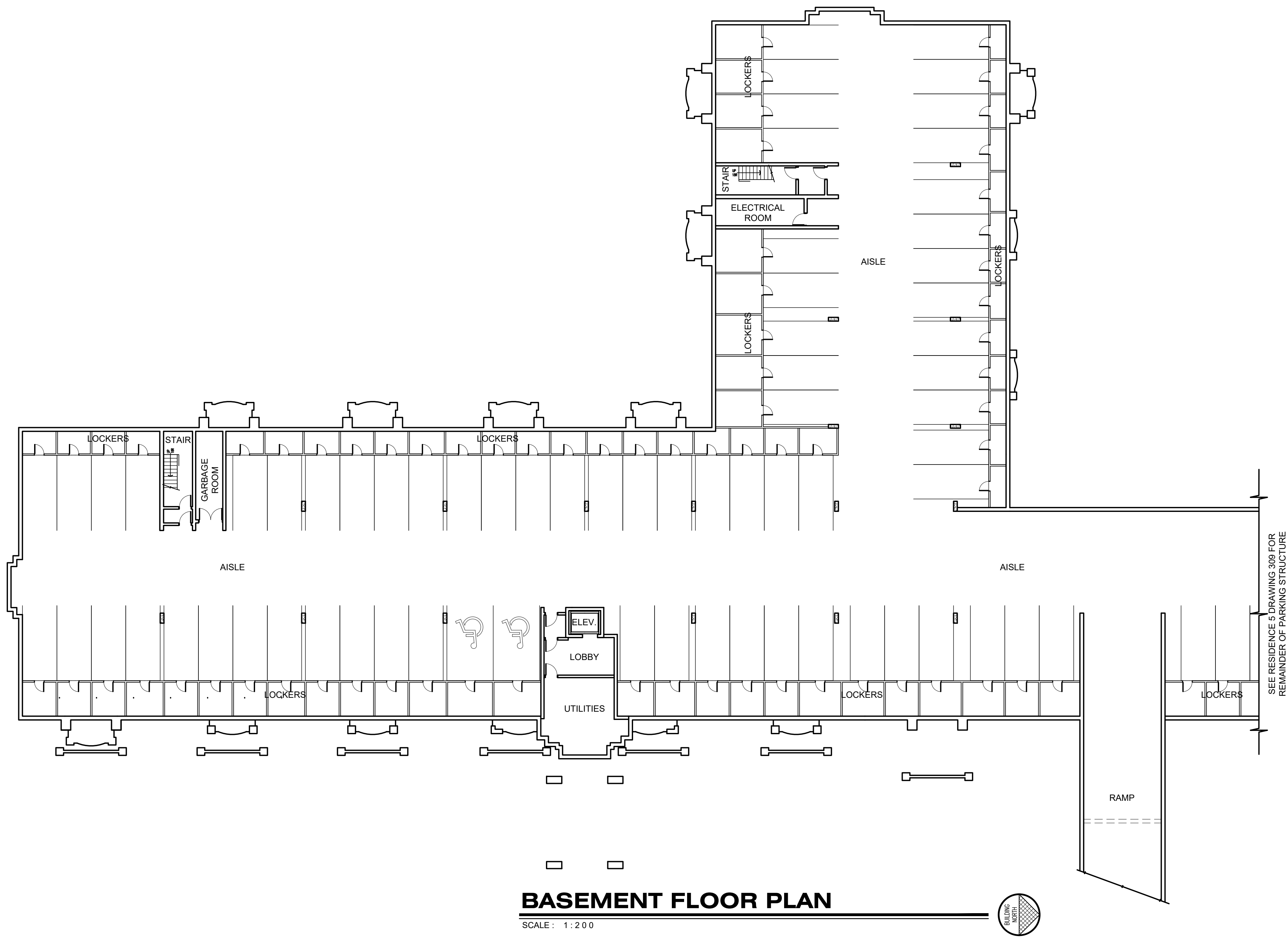
DATE	REVISIONS	DATE	REVISIONS
Nov. 18/20	FOR COORDINATION		
Nov. 19/20	FOR ZONING SUBMISSION		

**RITZ-CARLTON HOTEL,  
SPA & RESIDENCES**  
144, 176 & 200 John St., 856 Charlotte St.  
Niagara-on-the-Lake, Ontario

DATE: Nov. 18/22  
SCALE: 1:200  
DRAWN BY: MW/OD  
CHECK BY: PJL

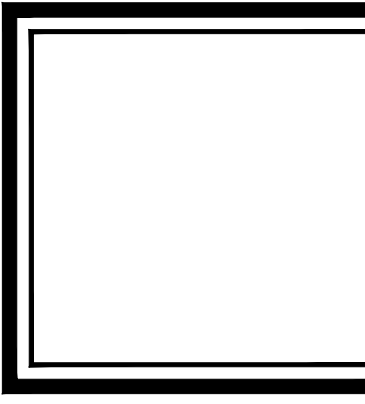
25 - 01

**A306**



**Peter J. Lesdow**  
architect

ARCHITECTURE INC. 1111 Niagara Falls, Ontario L2E 6E2  
PH: 905.255.1111 FAX: 905.255.1112  
WWW.PETERJLESADOW.COM



**RESIDENCE 4**  
**FLOOR PLANS**  
RESIDENCES at  
200 John St. & 856 Charlotte St.

DATE	REVISIONS	DATE	REVISIONS
Apr. 10/20	FOR COORDINATION		
Apr. 13/20	FOR REZONING SUBMISSION		

**RITZ-CARLTON HOTEL,  
SPA & RESIDENCES**

144, 176 & 200 John St., 856 Charlotte St.  
Niagara-on-the-Lake, Ontario

DATE: Nov. 18/ 22  
SCALE: 1:200  
DRAWN BY: MW/OD  
CHECK BY: P.JL

25 - 01

**A307**



**EAST ELEVATION**

SCALE: 1:200



**WEST ELEVATION**

SCALE: 1:200



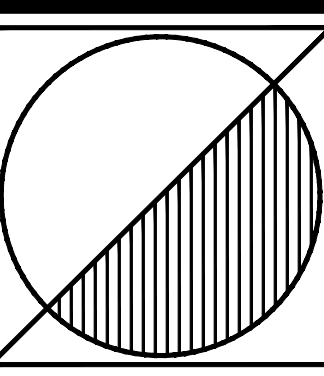
**SOUTH ELEVATION**

SCALE: 1:200



**NORTH ELEVATION**

SCALE: 1:200



Peter J. Lesdow  
architect



**RESIDENCE 4  
ELEVATIONS**  
RESIDENCES at  
200 John St. & 856 Charlotte St.

DATE	REVISIONS	DATE	REVISIONS
Nov. 17/20	FOR COORDINATION		
Nov. 17/20	FOR REDLINE SUBMISSION		

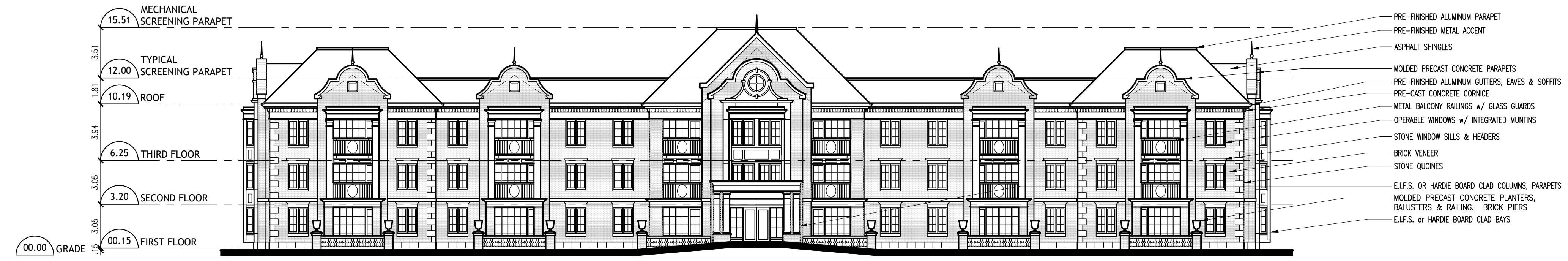
**RITZ-CARLTON HOTEL,  
SPA & RESIDENCES**  
144, 176 & 200 John St., 856 Charlotte St.  
Niagara-on-the-Lake, Ontario

DATE: Nov. 18/22  
SCALE: 1:200  
DRAWN BY: MW/OD  
CHECK BY: PJL

25 - 01

**A308**





**EAST ELEVATION**

SCALE: 1:200



**WEST ELEVATION**

SCALE: 1:200



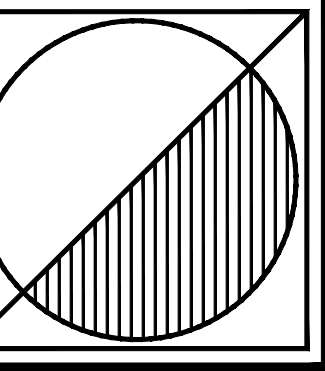
**SOUTH ELEVATION**

SCALE: 1:200

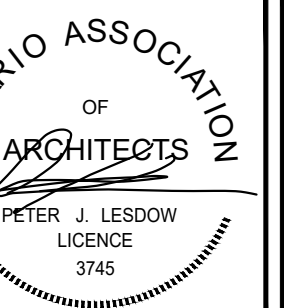


**NORTH ELEVATION**

SCALE: 1:200



Peter J. Lesdow  
architect



RESIDENCE 5  
ELEVATIONS  
RESIDENCES at  
200 John St. & 856 Charlotte St.

DATE	REVISIONS	DATE	REVISIONS
Apr. 10/20	FOR COORDINATION		
Apr. 13/20	FOR REVISION SUBMISSION		

RITZ-CARLTON HOTEL,  
SPA & RESIDENCES  
144, 176 & 200 John St., 856 Charlotte St.  
Niagara-on-the-Lake, Ontario

DATE: Nov. 18/22  
SCALE: 1:200  
DRAWN BY: MW/OD  
CHECK BY: PJL

25 - 01

A310