

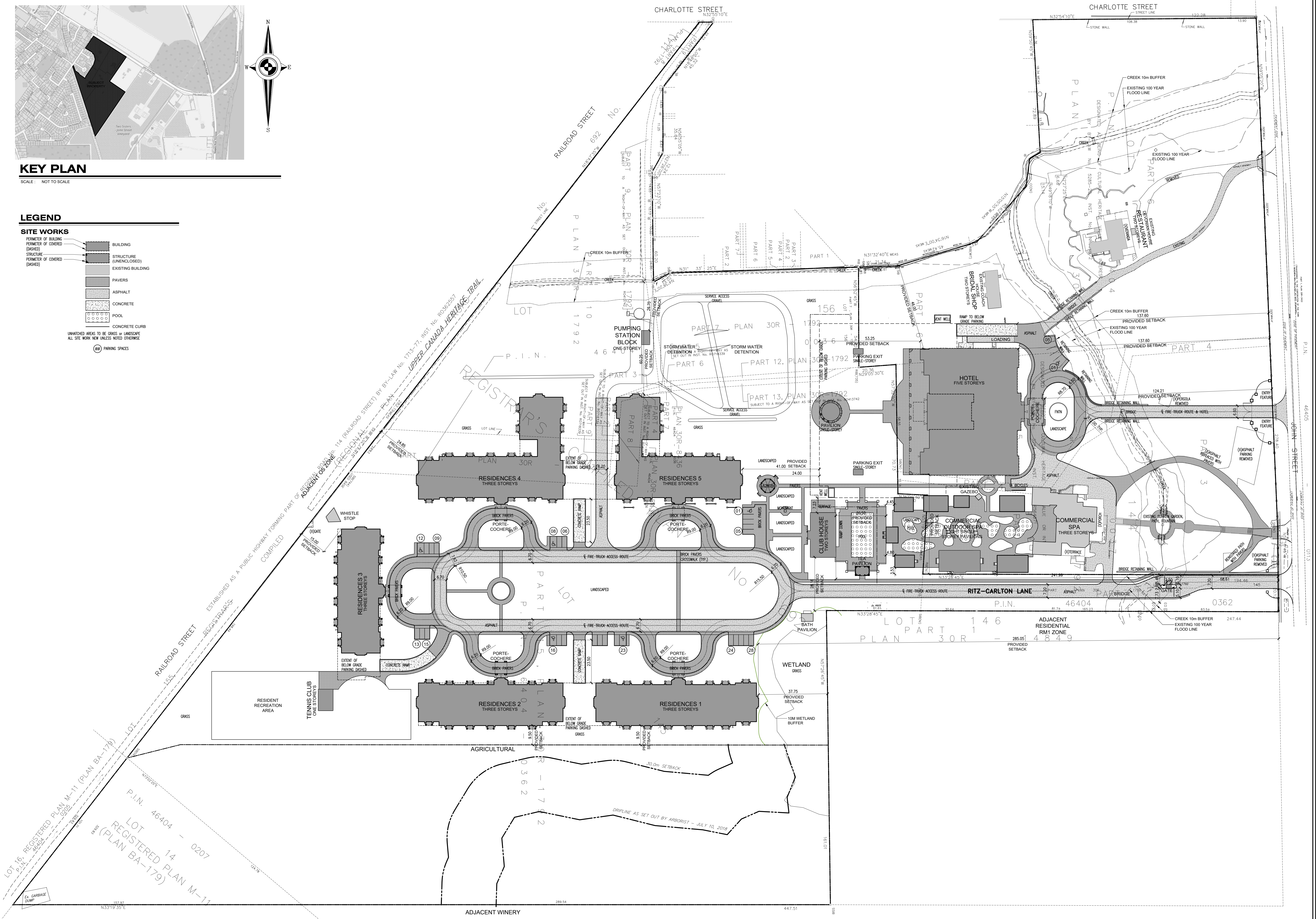
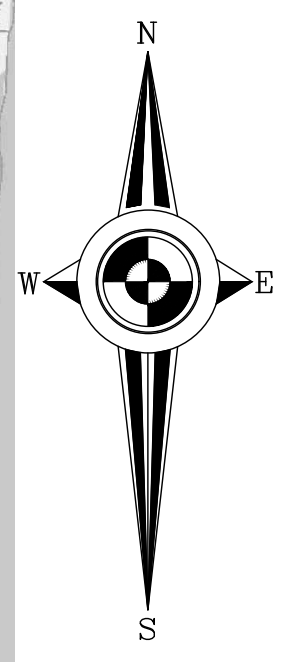


**KEY PLAN**

SCALE: NOT TO SCALE

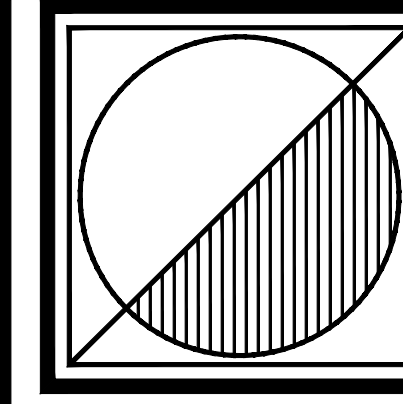
**LEGEND**

- SITE WORKS**
- PERIMETER OF BUILDING (DASHED)
  - PERIMETER OF COVERED (DASHED)
  - STRUCTURE (UNENCLOSED)
  - PERIMETER OF COVERED (DASHED)
  - EXISTING BUILDING
  - PAVERS
  - ASPHALT
  - CONCRETE
  - POOL
  - CONCRETE CURB
  - UNMATCHED AREAS TO BE GRASS OR LANDSCAPE
  - ALL SITE WORK NEW UNLESS NOTED OTHERWISE
  - (P) PARKING SPACES



**MASTER SITE CONCEPT PLAN**

SCALE: 1:750



**Peter J. Lesdow**  
architect

ONTARIO ASSOCIATION  
OF ARCHITECTS

PETER J. LESDOW  
LICENSE  
3745

**MASTER SITE CONCEPT PLAN**  
144, 176 & 200 John St.,  
856 Charlotte St

DATE	REVISIONS	DATE	REVISIONS
14-107-20	FOR COORDINATION		
14-137-20	FOR ZONING SUBMISSION		
14-157-20	FOR ZONING SUBMISSION		

**RITZ-CARLTON HOTEL,  
SPA & RESIDENCES**  
144, 176 & 200 John St., 856 Charlotte St.  
Niagara-on-the-Lake, Ontario

DATE: Nov. 18/ 22  
SCALE: 1:750  
DRAWN BY: MW/OD  
CHECK BY: PJL

25 - 01

**A101**