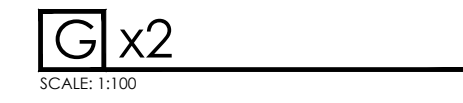
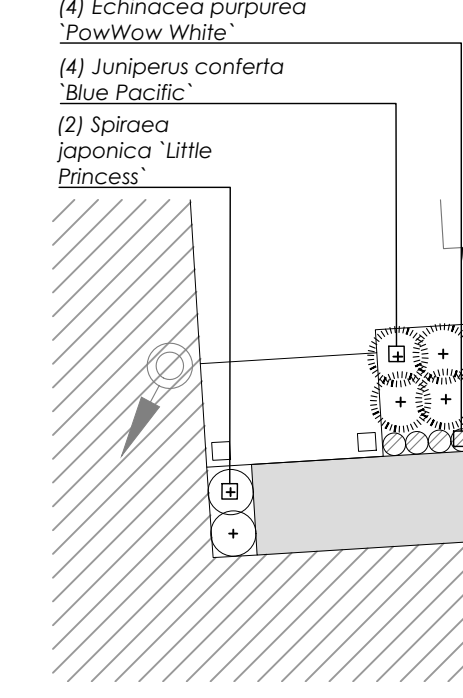
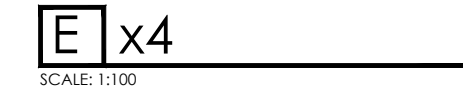
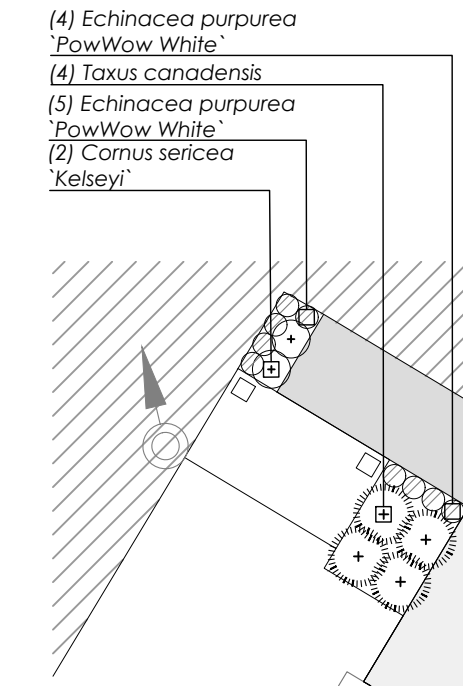
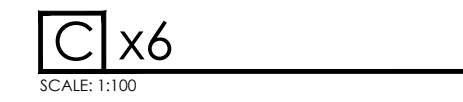
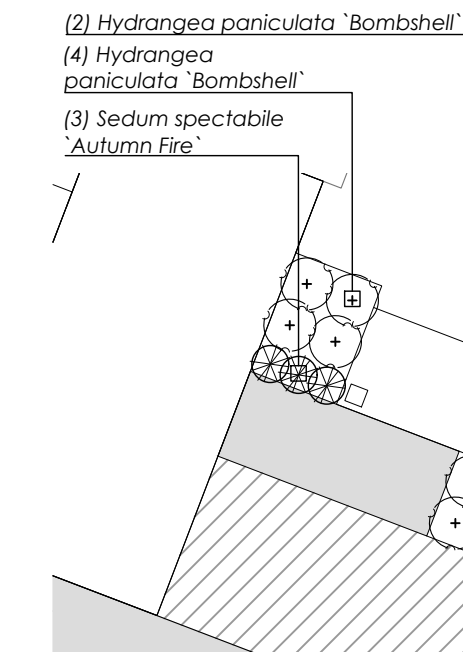
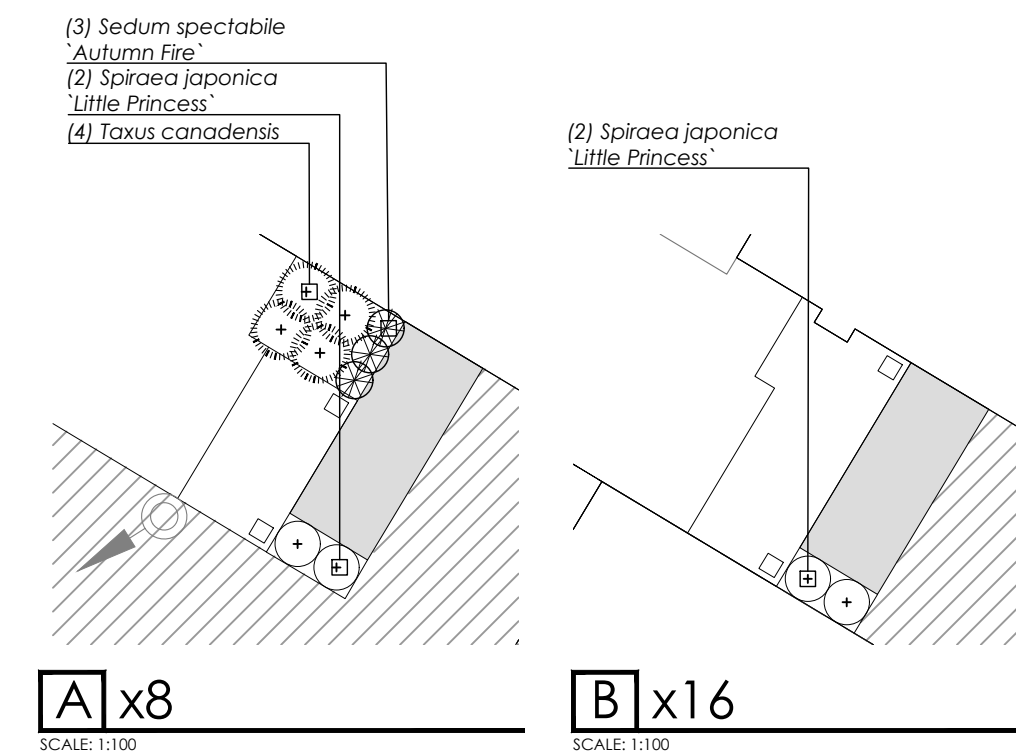


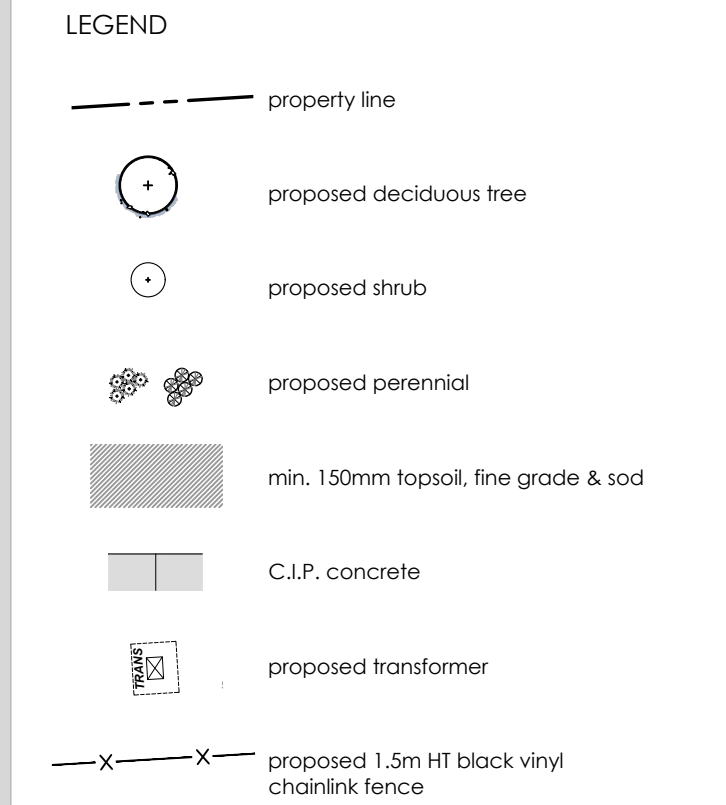
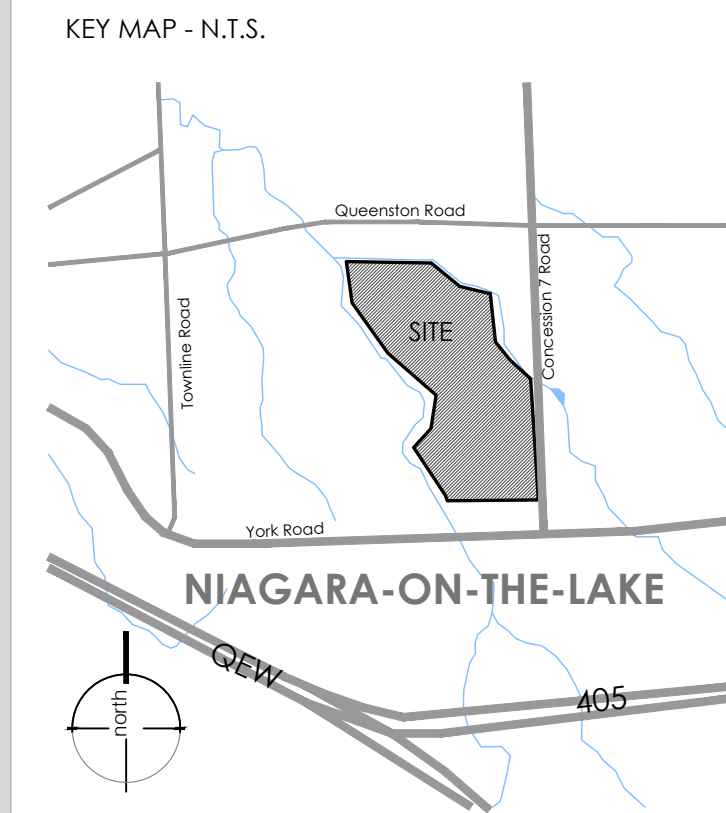
MATCH LINE -
SEE L-3 FOR PHASE 1



PLANT SCHEDULE PHASE 2

QTY	BOTANICAL NAME	COMMON NAME	SIZE	COND.	MATURE HT. (M)	MATURE SPR. (M)	O.C. (M)	REMARKS
SHRUBS								
8	Cornus sericea 'Kelsey'	Kelsey's Dwarf Red Osier Dogwood	50cm	#3 cont.	0.50	0.50	0.40	
64	Hydrangea paniculata 'Bomshel'	Bomshel Hydrangea	50cm	#3 cont.	0.70	0.60	0.60	
8	Juniperus conferta 'Blue Pacific'	Blue Pacific Shore Juniper	40cm	#3 cont.	0.30	0.60	0.70	
58	Spiraea japonica 'Little Princess'	Little Princess Japanese Spirea	40cm	#3 cont.	0.50	0.60	0.50	
48	Taxus canadensis	Canadian Yew	40cm	#3 cont.	0.50	0.80	0.70	Native to Ontario
GRASSES								
24	Pennisetum alopecuroides 'Piglet'	Piglet Fountain Grass	-	#1 cont.	0.40	0.30	0.20	
PERENNIALS								
44	Echinacea purpurea 'PowWow White'	PowWow White Coneflower	-	#1 cont.	0.50	0.30	0.25	
42	Sedum spectabile 'Autumn Fire'	Autumn Fire Stenocrop	-	#1 cont.	0.40	0.50	0.40	

- LANDSCAPE NOTES:
- All work to be carried out in accordance with by-laws and codes having jurisdiction over site location.
 - Complete all work to the satisfaction of the Landscape Architect.
 - Report any changes, discrepancies or substitutions to the Landscape Architect for review. Obtain approval from the Landscape Architect before proceeding.
 - It is the contractor's responsibility to determine existing service locations.
 - Exact locations of plant material will be determined by placement of site services such as hydro vaults, meters, utilities roof rain water leaders, driveways, light standards, etc.
 - All plant material locations to be staked or marked out and approved by Landscape Architect prior to installation.
 - Supply all plant material in accordance with the Canadian Standards for Nursery Stock (8th ed.).
 - Install plant material according to details shown.
 - Supply and place mulch in accordance with Canadian Landscape Standard (Section 10, Mulching). Disturbed soil areas around trees and shrubs are to be covered with shredded conifer bark mulch such as 'Cedar Bark Mulch' by All Treat Farms or 'Classic Cedar Mulch' by Gro-Bark, or approved equivalent. Alternative mulches must be approved by the Landscape Architect.
 - Contractor to utilize layout dimensions where provided.
 - Provide planting bed area as noted on the drawing or to accommodate mature size of plant material.
 - All support systems must be removed by the contractor at time of final acceptance. No extras will be paid to complete this work.
 - Supply and place topsoil in accordance with Canadian Landscape Standard (Section 4, Grading & Drainage and Section 6, Growing Medium) to a minimum depth of 150mm unless otherwise specified.
 - Supply and place sod in accordance with Canadian Landscape Standard (Section 7, Lawns & Grass and Section 8, Turfgrass Sod) unless otherwise specified.
 - Supply and place seed in accordance with Canadian Landscape Standard (Section 4, Grading & Drainage and Section 6, Growing Medium) unless otherwise specified. All 5:1 or greater slopes to be seeded with topsoil. Contractor to provide necessary erosion control protection as required to ensure soil stabilization and proper seed germination.
 - All dimensions in meters unless otherwise noted.
 - If discrepancies arise between plant material count shown on drawing and plant list, the drawing shall be considered correct.
 - Contractor to provide minimum one (1) year warranty (including trees on municipal property) from date accepted on all work unless otherwise specified.
 - Any site plan or grading and servicing shown is for information only. Refer to approved drawings.
 - Not for construction unless stamped, signed and dated by Landscape Architect.
 - Drawings not to be reproduced without written consent from Landscape Architect.
 - Approval of landscape plan to be obtained from municipality.
 - All plant material to be planted a minimum of 1.0m from any swales or ditches.
 - For grading and servicing information refer to the consulting Engineer's drawings.
 - For lighting information and power distribution refer to the electrical consultant's drawings.



NOT FOR CONSTRUCTION
ISSUED FOR REVIEW & COMMENTS ONLY

REVISIONS/ SUBMISSIONS

#	DATE	DESCRIPTION
1	2025-05-14	Issued for first SPA submission
2	2026-02-26	Issued for second SPA submission



CLIENT
Marz Homes
MUNICIPALITY
Town of Niagara-on-the-Lake

PROJECT
Modero Estates - Block 84

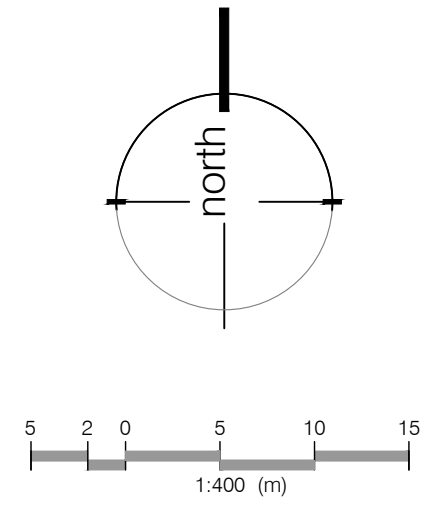
MUNICIPAL FILE NUMBER

SHEET
Unit Planting Plan



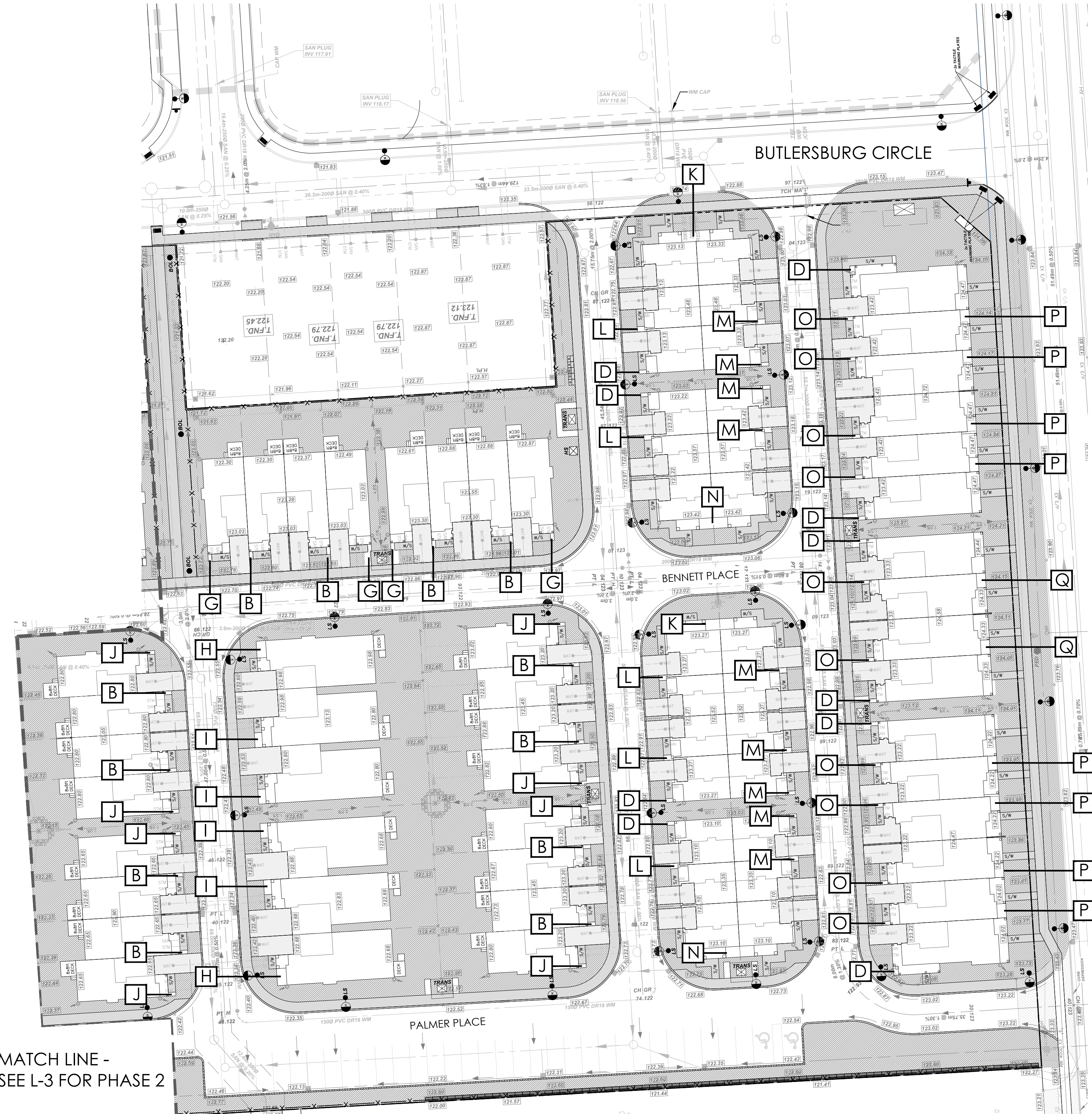
69 John Street South, Suite 250
Hamilton, ON L8N 2B9
t. 905.526.8876
e. info@adesso.ca
www.adesso.ca

69 John Street South, Suite 250
Hamilton, ON L8N 2B9
t. 905.526.8876
www.adesso.ca

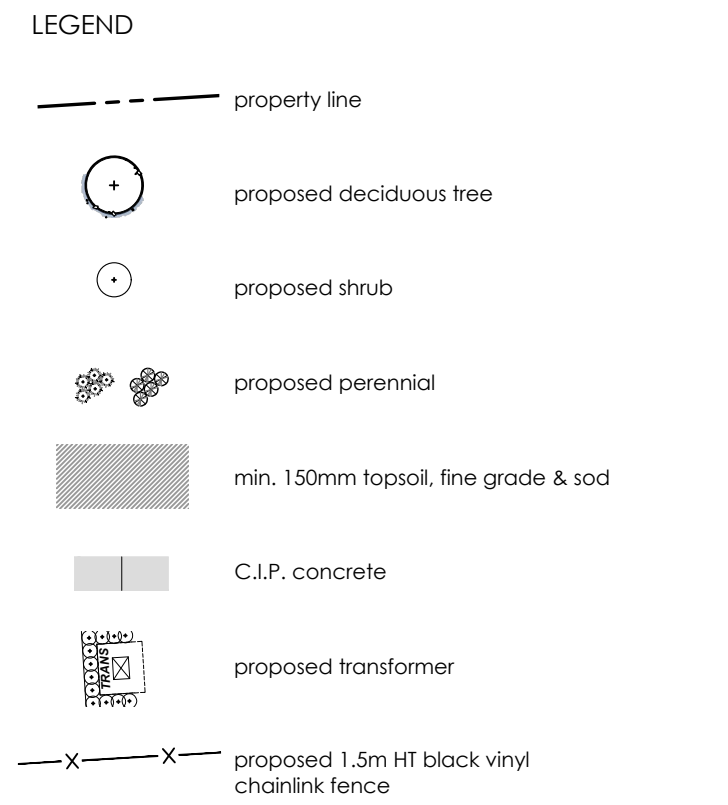
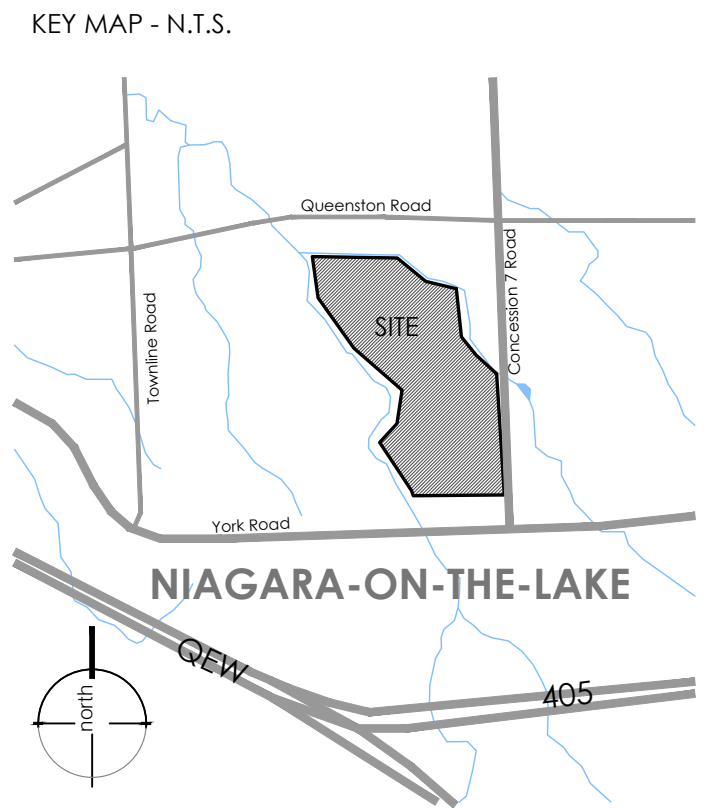
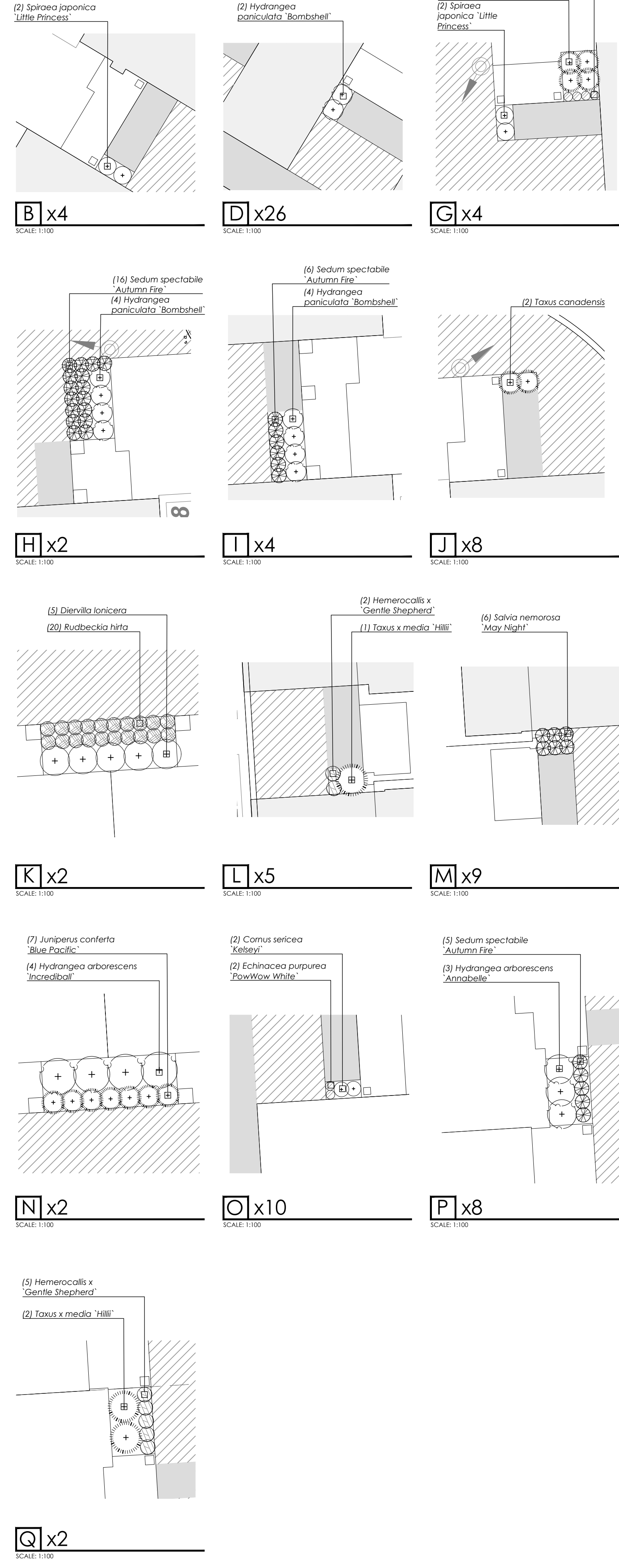


PLANT SCHEDULE PHASE 1

QTY	BOTANICAL NAME	COMMON NAME	SIZE	COND.	MATURE HT. (M)	MATURE SPR. (M)	O.C. (M)	REMARKS
SHRUBS								
20	<i>Cornus sericea</i> 'Kelsey'	Kelsey's Dwarf Red Osier Dogwood	50cm	#3 cont.	0.50	0.50	0.40	Native to Ontario
10	<i>Diervilla lonicera</i>	Bush Honeysuckle	40cm	#3 cont.	1.0	1.0	0.90	
24	<i>Hydrangea arborescens</i> 'Annabelle'	Annabelle Hydrangea	50cm	#3 cont.	1.1	1.0	0.90	
8	<i>Hydrangea arborescens</i> 'Incrediball'	Incrediball Hydrangea	50cm	#3 cont.	1.25	1.1	1.1	
44	<i>Hydrangea paniculata</i> 'Bombshell'	Bombshell Hydrangea	50cm	#3 cont.	0.70	0.70	0.60	
30	<i>Juniperus conferta</i> 'Blue Pacific'	Blue Pacific Shore Juniper	40cm	#3 cont.	0.30	0.80	0.70	
32	<i>Spiraea japonica</i> 'Little Princess'	Little Princess Japanese Spirea	40cm	#3 cont.	0.50	0.60	0.50	
9	<i>Taxus canadensis</i>	Canadian Yew	40cm	#3 cont.	0.50	0.80	0.70	Native to Ontario
16	<i>Taxus x media</i> 'Hill'	Hill Yew	40cm	#3 cont.	2.5	1.1	0.90	
PERENNIALS								
36	<i>Echinacea purpurea</i> 'PowWow White'	PowWow White Coneflower	--	#1 cont.	0.50	0.30	0.25	
20	<i>Hemerocallis x</i> 'Gentle Shepherd'	Gentle Shepherd Daylily	--	#1 cont.	0.70	0.50	0.40	Native to Ontario
40	<i>Rudbeckia hirta</i>	Black-Eyed Susan	--	#1 cont.	0.60	0.50	0.40	
54	<i>Salvia nemorosa</i> 'May Night'	May Night Meadow Sage	--	#1 cont.	0.40	0.50	0.40	
98	<i>Sedum spectabile</i> 'Autumn Fire'	Autumn Fire Stonecrop	--	#1 cont.	0.40	0.50	0.40	



MATCH LINE - SEE L-3 FOR PHASE 2



NOT FOR CONSTRUCTION
ISSUED FOR REVIEW & COMMENTS ONLY

REVISIONS/ SUBMISSIONS

#	DATE	DESCRIPTION
1	2025-05-14	Issued for first SPA submission
2	2026-02-26	Issued for second SPA submission



CLIENT: Marz Homes
MUNICIPALITY: Town of Niagara-on-the-Lake

PROJECT: Modero Estates - Block 84

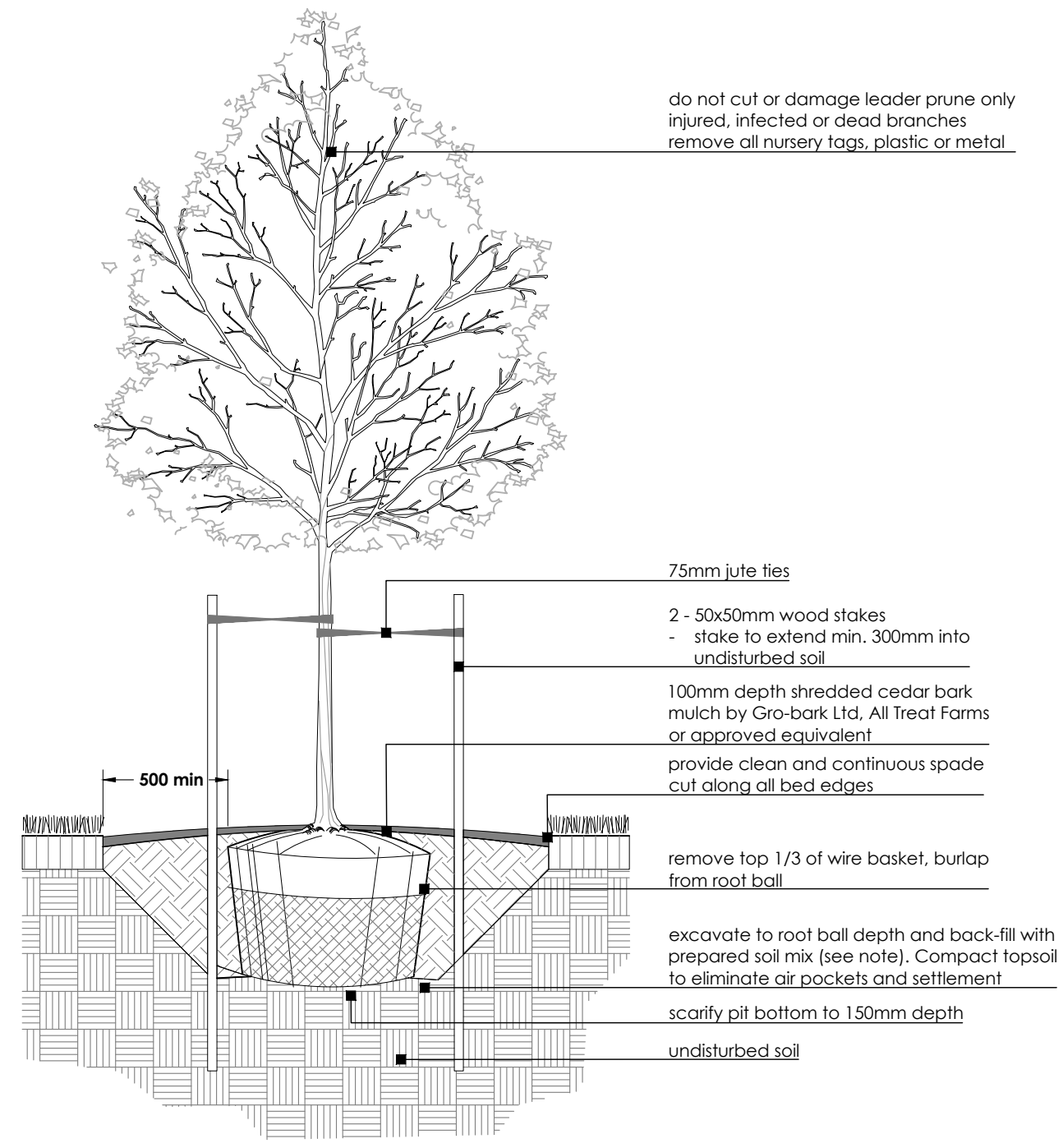
MUNICIPAL FILE NUMBER:

SHEET: Unit Planting Plan

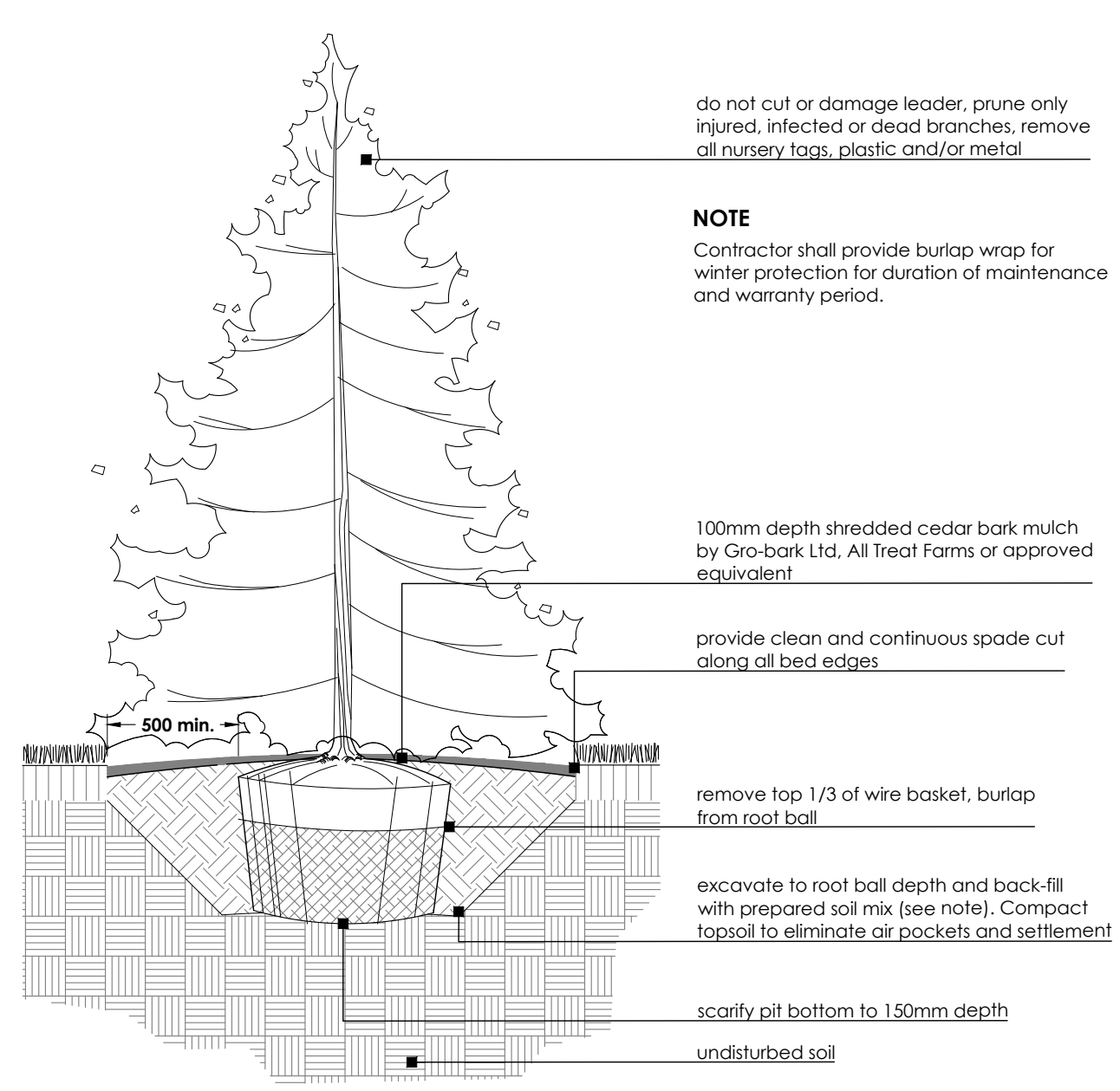
L-3



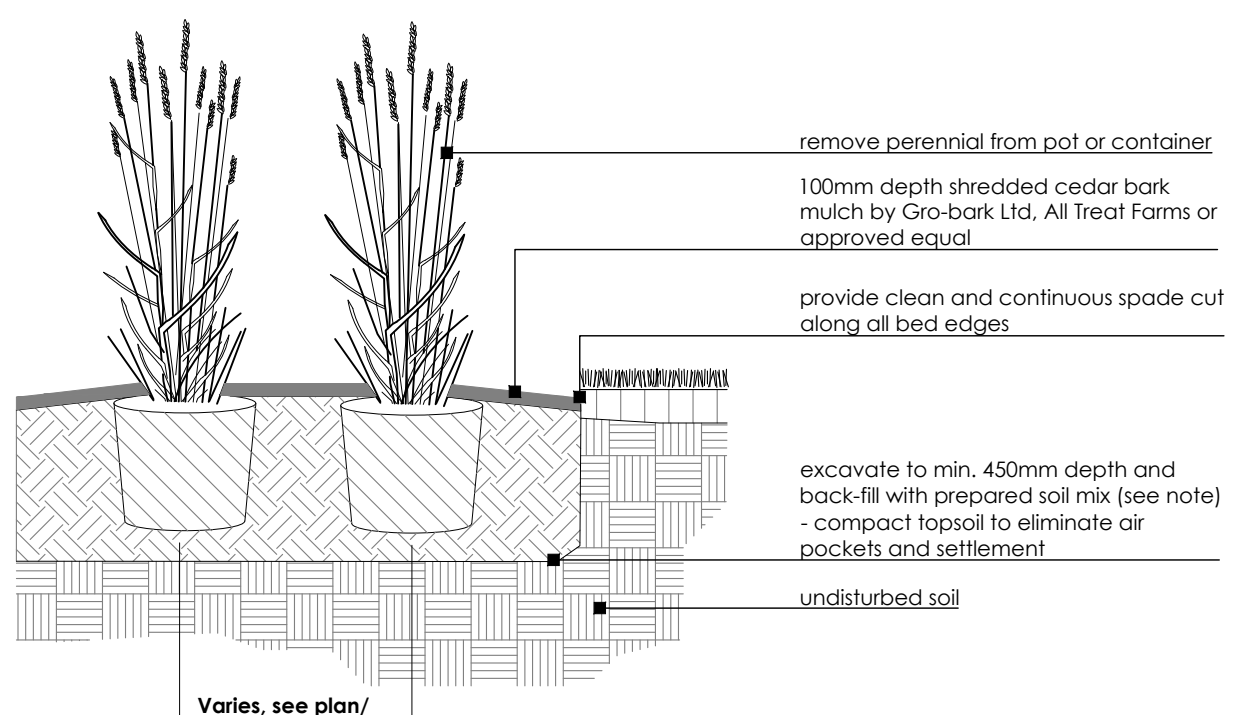
69 John Street South, Suite 250
Hamilton, ON L8N 2B9
t. 905.526.8878
e. info@adessodesigninc.ca
www.adessodesigninc.ca



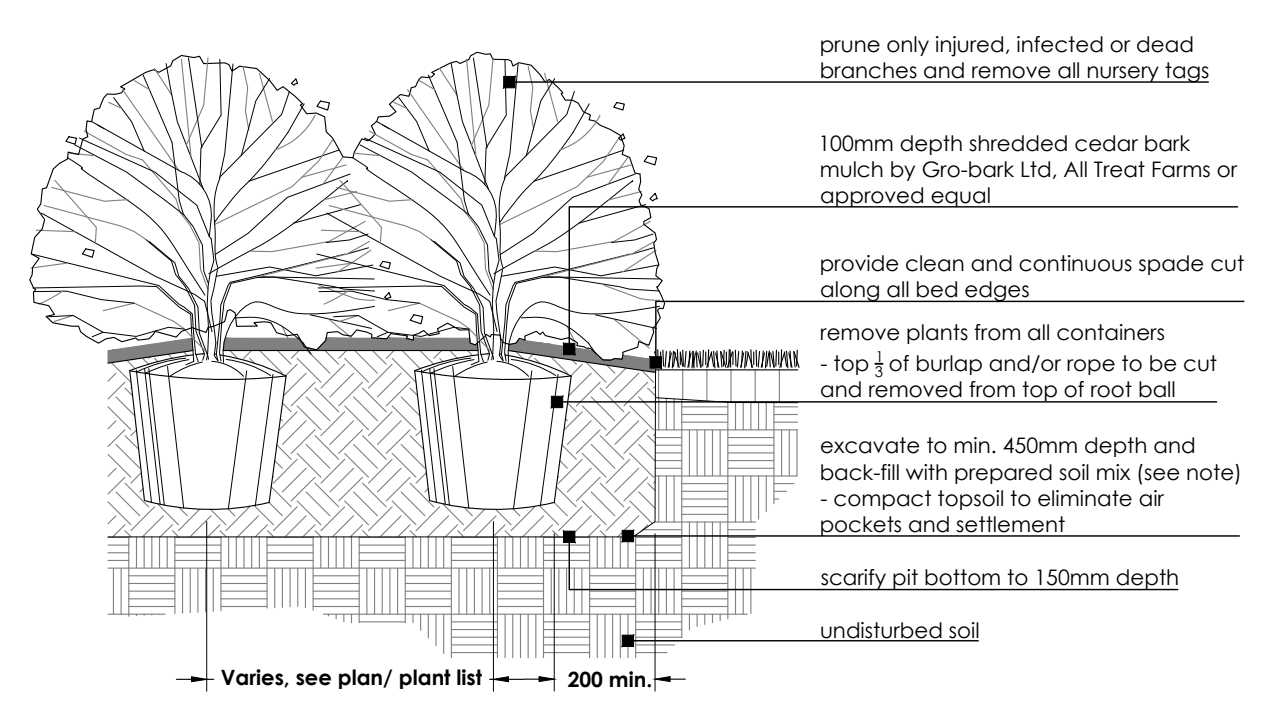
1
BALLED AND BURLAP /WIRE BASKET DECIDUOUS TREE
N.T.S. L-4



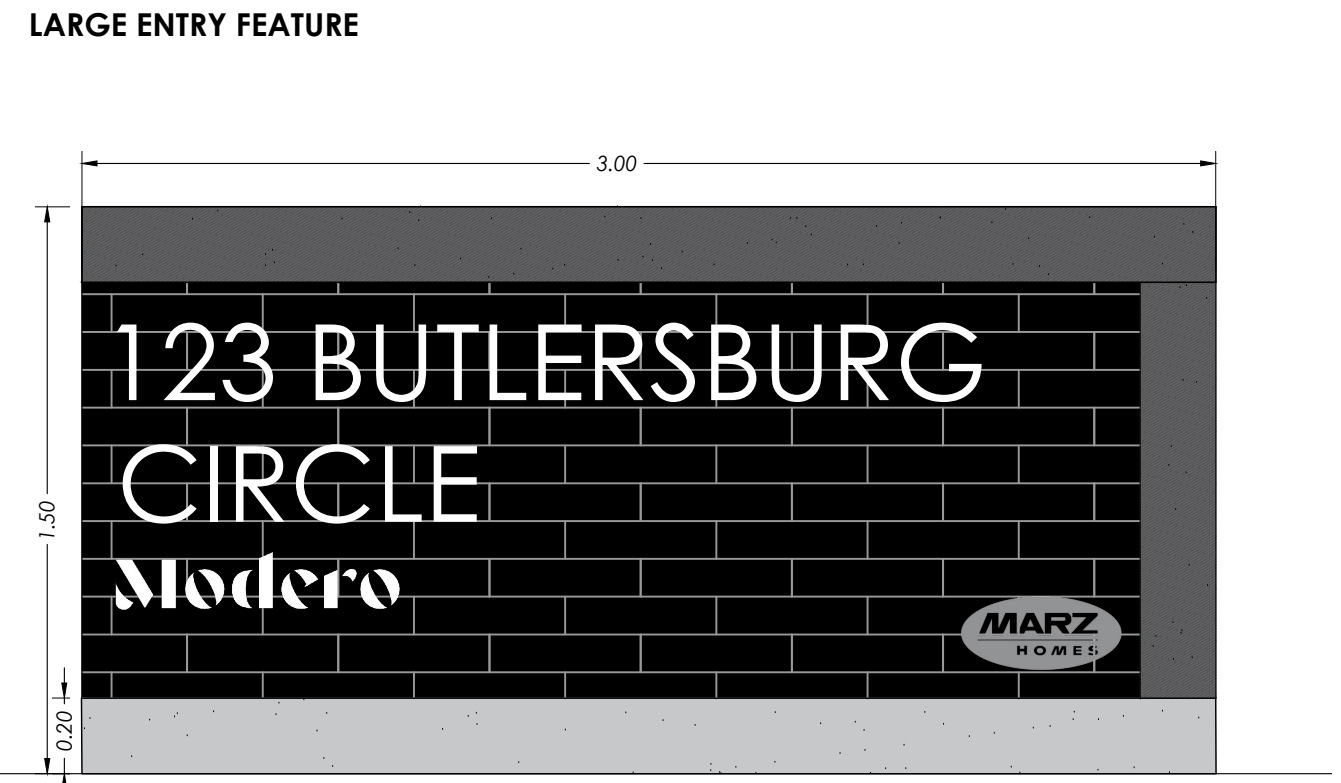
2
BALLED AND BURLAP/WIRE BASKET CONIFEROUS TREE
N.T.S. L-4



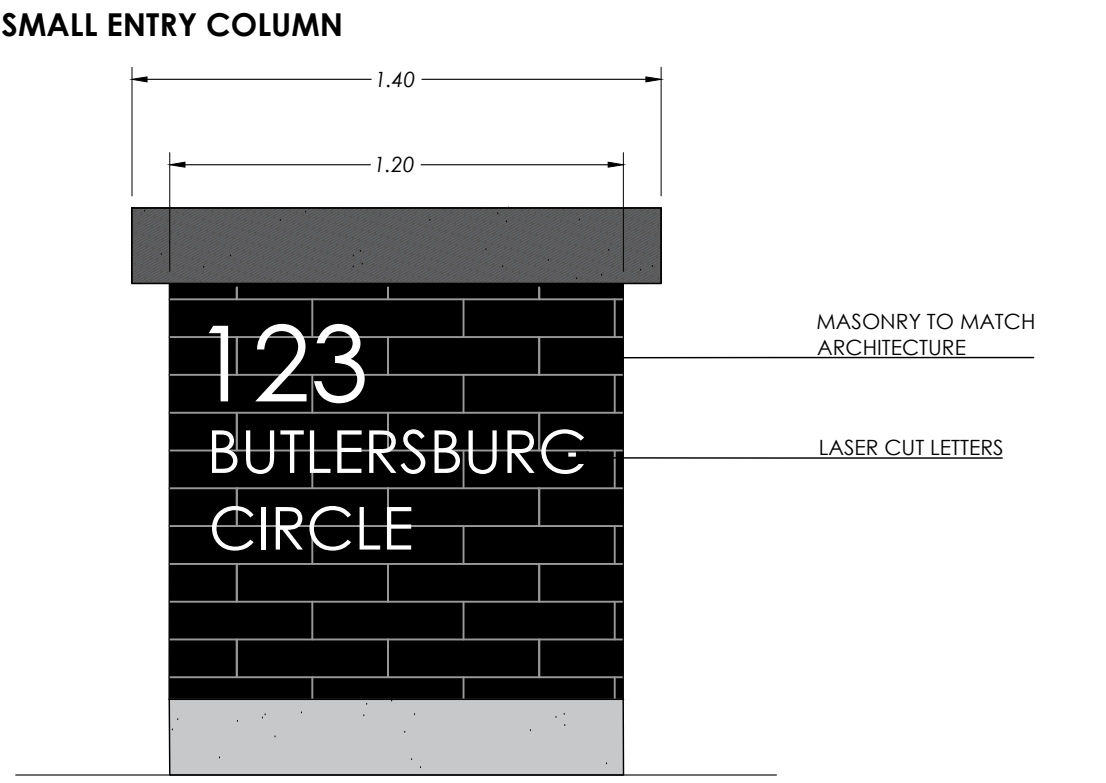
3
CONTAINER GROWN PERENNIAL
N.T.S. L-4



4
CONTAINER GROWN SHRUB
N.T.S. L-4

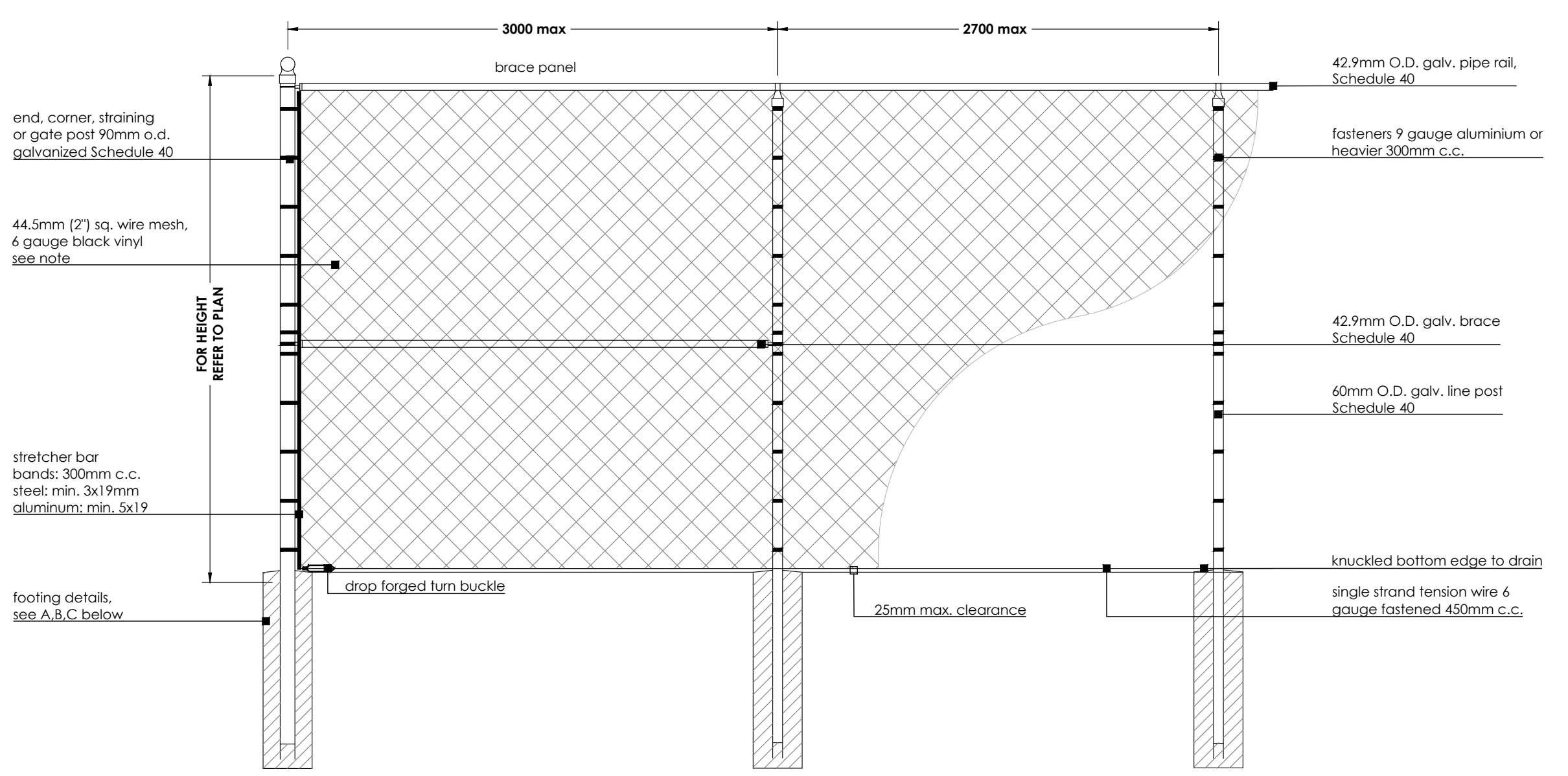


5
ENTRY FEATURES
SCALE: N.T.S. L-4



5
CHAIN LINK FENCE
N.T.S. L-4

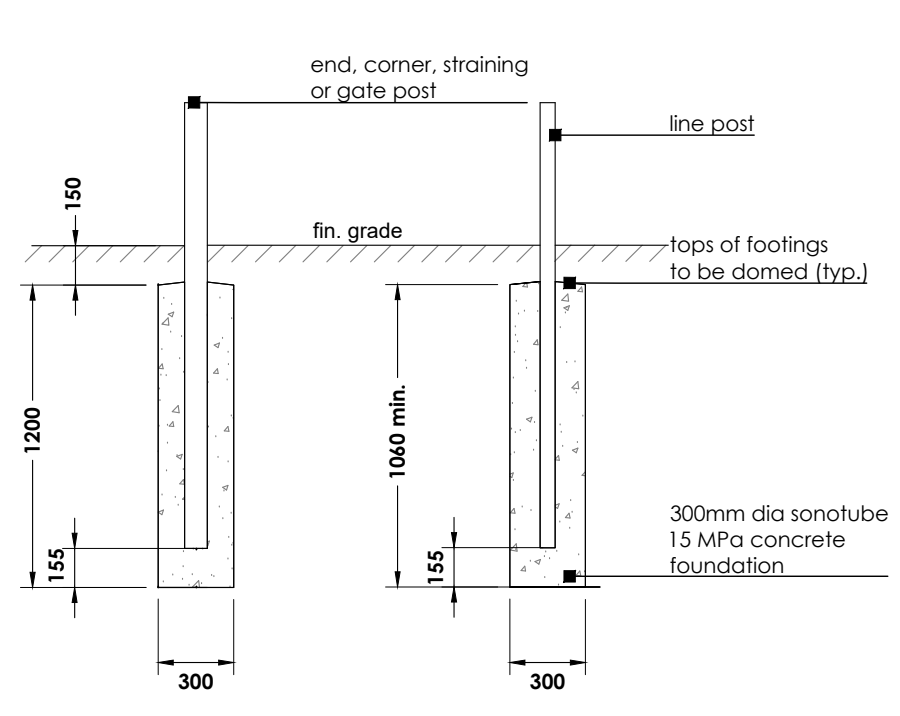
ELEVATION



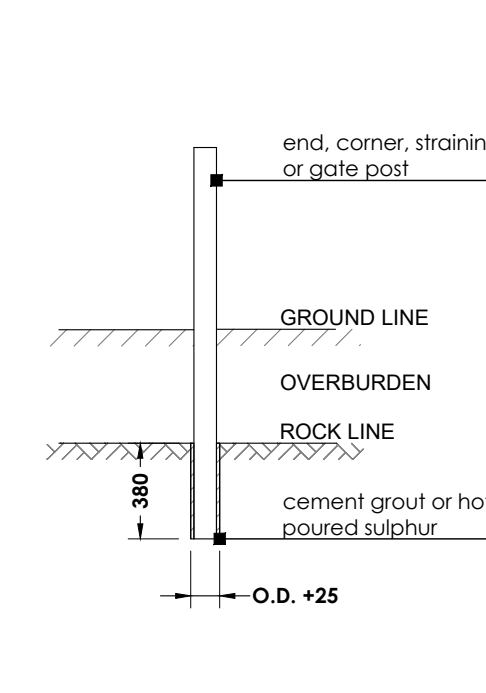
POST DETAILS

DESCRIPTION	LENGTH (m)		
	O.D.	STANDARD	RETAINING WALLS
Line	0.603	2.5	2.0
End, corner, straining and gates with openings 5.3m max.	0.889	2.7	2.3
Gates with openings 10.0m max.	1.14	2.7	--

A. IN EARTH



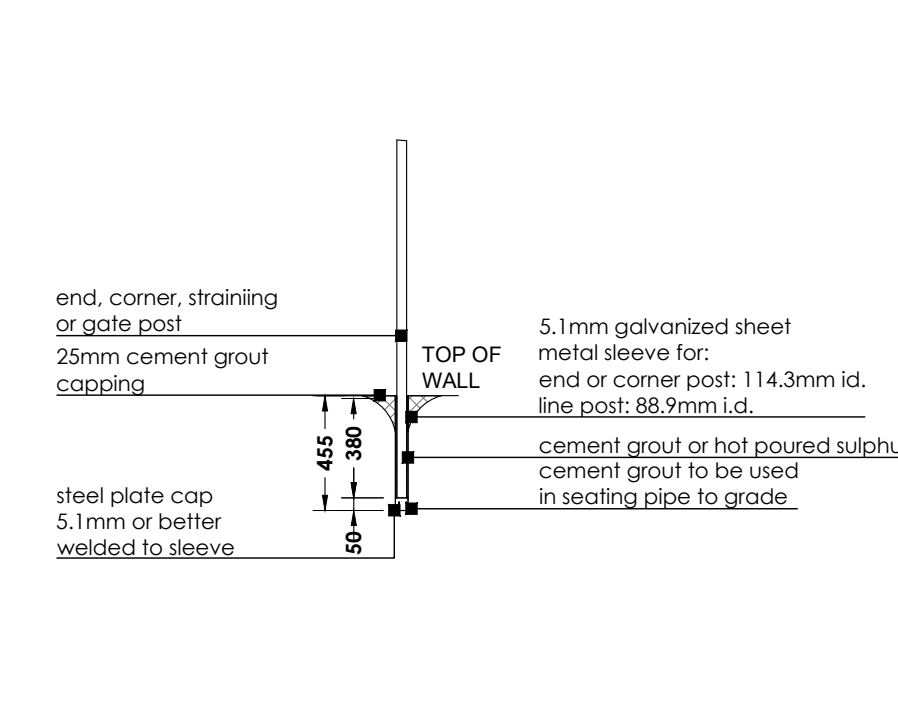
B. IN SOLID ROCK (OVERBURDEN LESS THAN 450mm)



NOTES:

- All dimensions shown in mm, except as noted.
- All fence fabric, posts, caps, braces & top rails shall be coated with black vinyl.
- Wire mesh gauge as specified shall be measured prior to powder coating.
- Position of fence shown on plan and shall be verified on site by landscape architect prior to installation. Any changes to positioning shall be verified by landscape architect.

C. ON RETAINING WALL



- PLANTING NOTES:**
- Soil mixture: four (4) parts native soil, one (1) part well rotted compost if existing soil is not suitable provide triple mix topsoil or approved equal.
 - Saucer shall be soaked with water and mulched immediately following planting.
 - Matted shrubs shall be planted in continuous mulched beds unless otherwise noted.
 - Staking schedule:
 - < 30mm caliper size/ 2500mm ht. - one stake
 - > 30mm caliper size/ 2500mm ht. - two stakes
 - > 70mm caliper - three stakes
 - All support systems must be removed once tree is established.
 - All trees to be straight and planted vertically regardless of slope.
 - Top of root flare shall be positioned 50mm above grade.
 - The following depths of soil are required for planting:
 - 15cm topsoil for sod;
 - 30cm of topsoil for perennials;
 - 45cm of topsoil for shrubs;
 - 90cm of topsoil for trees

NOT FOR CONSTRUCTION
ISSUED FOR REVIEW & COMMENTS ONLY

REVISIONS/ SUBMISSIONS

#	DATE	DESCRIPTION
1	2025-05-14	Issued for first SPA submission
2	2026-02-26	Issued for second SPA submission



CLIENT
Marz Homes
MUNICIPALITY
Town of Niagara-on-the-Lake

PROJECT
Modero Estates - Block 84

MUNICIPAL FILE NUMBER

SHEET
Details L-4



69 John Street South, Suite 250
Hamilton, ON L8N 2B9
t. 905.526.8876
e. info@adessedesigninc.ca
www.adessedesigninc.ca