

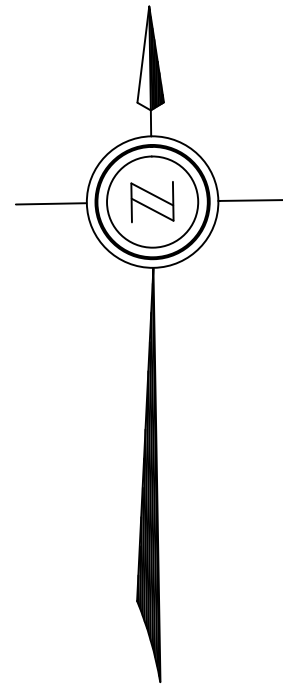
TOPOGRAPHIC SKETCH

PIN 46358-0041 (LT) 475 QUEENSTON ROAD.
 PIN 46358-0043 LT) 481 QUEENSTON ROAD.
 NIAGARA-ON-THE-LAKE
 REGIONAL MUNICIPALITY OF NIAGARA

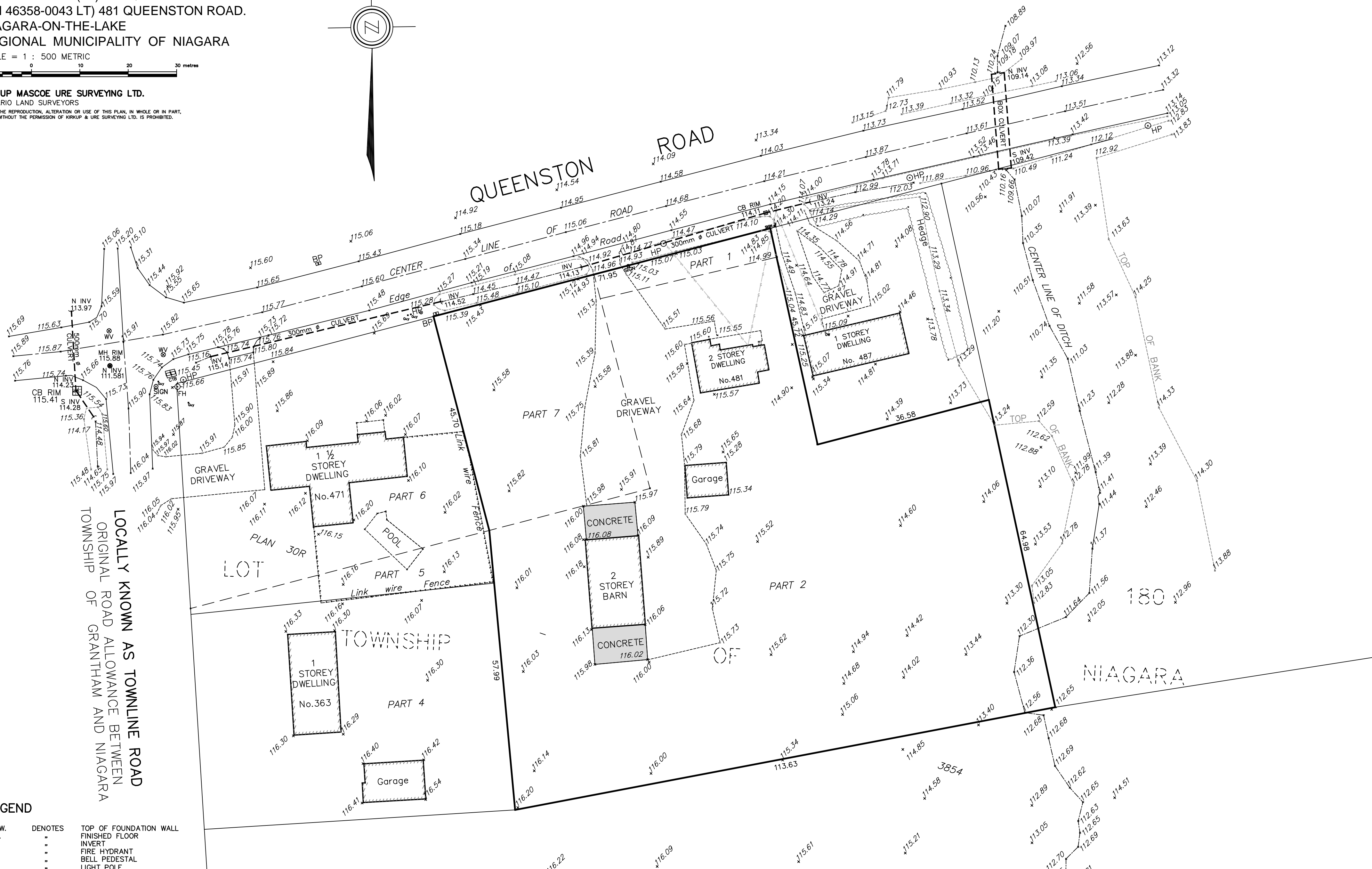
SCALE = 1 : 500 METRIC

KIRKUP MASCOE URE SURVEYING LTD.
 ONTARIO LAND SURVEYORS

THE REPRODUCTION, ALTERATION OR USE OF THIS PLAN, IN WHOLE OR IN PART,
 WITHOUT THE PERMISSION OF KIRKUP & URE SURVEYING LTD. IS PROHIBITED.



QUEENSTON ROAD
 OF 115.06
 ROAD



LOCALLY KNOWN AS TOWNLINER ROAD
 ORIGINAL ROAD ALLOWANCE BETWEEN
 TOWNSHIP OF GRANTHAM AND NIAGARA

LEGEND

T.F.W.	DENOTES	TOP OF FOUNDATION WALL
F.F.	..	FINISHED FLOOR
Inv.	..	INVERT
FH	..	FIRE HYDRANT
BP	..	BELL PEDESTAL
LP	..	LIGHT POLE
MH	..	MANHOLE
CB	..	CATCH BASIN
BP	..	BELL PEDESTAL
UPLS	..	UTILITY POLE - LIGHT STANDARD
CTB	..	CABLE TV PEDESTAL
Guy	..	GUY WIRE
..	..	SETBACK MEASUREMENT
..	..	OVERHEAD WIRES
..	..	DECIDUOUS TREE
..	..	CONIFEROUS TREE

BENCHMARK:
 ELEVATIONS ARE GEODETIC DATUM AND WERE
 RELATED TO BENCH MARK 9338015,
 ELEVATION 99.932

METRIC NOTE
 DISTANCES SHOWN ON THIS PLAN
 ARE IN METRES AND CAN BE CONVERTED
 TO FEET BY DIVIDING BY 0.3048

REVISION	DATE	INITIAL	RELEASE
	FEBRUARY 2, 2021		
			REMARKS

KIRKUP MASCOE URE
 SURVEYING LTD.
 49 EASTCHESTER AVENUE, ST. CATHARINES, ONTARIO L2P-2Y6
 TELEPHONE: (905) 641-1007, FAX: (905) 641-4424
 E-MAIL: info@niagarasurveyors.com
 www.niagarasurveyors.com

JOB No. 2021-0001 DWG FILE : 21-0001-topoSKETCH