

REGENT STREET

CENTRE STREET

GAGE STREET

325 KING STREET
PARLIAMENT OAK HOTEL
4 STOREYS

GF FFE 88.53
B1 FFE 83.90
B2 FFE 80.85

KING STREET

No.	Revision	Comments
1	2023-02-02	ISSUED FOR 1 ST 28A SUBMISSION
2	2024-08-30	ISSUED FOR 1 ST SPA SUBMISSION
3	2024-12-17	ISSUED FOR BALDWIN POINT
4	2025-03-07	RE-ISSUED FOR SPA SUBMISSION
5	2025-07-23	RE-ISSUED FOR SPA SUBMISSION

THIS DRAWING TO BE READ IN CONJUNCTION WITH ALL OTHER DRAWINGS PREPARED BY RVA.

LEGEND	
---	PROPERTY LINE
---	LIMIT OF ROOF OVERHANG
+	PROPOSED ELEVATION
+	PROPOSED LOW POINT
+	EXISTING ELEVATION
+	PROPOSED SLOPE
+	AREA DRAIN (AD)
+	CATCH BASIN
+	STRIP DRAIN (SD)
+	ACCESS OPENING
+	PROPOSED RETAINING WALL
+	H.P.
+	PROPOSED FINISHED FLOOR ELEVATION
+	PROPOSED OVERLAND FLOW ROUTE (GREATER THAN 100-YR STORM)
+	PROPOSED ASPHALT
+	PROPOSED CONCRETE
+	PROPOSED PAVER
+	PROPOSED LIGHT STANDARD
+	BENCHMARK LOCATION (REFER TO GEOTECH INVESTIGATION REPORT)
+	EXISTING MUNICIPAL SIGN
+	EXISTING HYDRO POLE
+	EXISTING BELL
+	EXISTING GAS MAIN
+	EXISTING GUY WIRE

BENCH MARK:
ELEVATIONS SHOWN ON THIS PLAN ARE EXTRACTED FROM TOPOGRAPHICAL SKETCH OF 325 KING ST., BY J.D. BARNES DATED NOVEMBER 25, 2022. ELEVATIONS ARE OF GEODETIC ORIGIN (CGVD-1928.7), AND ARE DERIVED FROM CHNS OBSERVATIONS AND NATURAL RESOURCES CANADA'S GRID MODEL H1Z.0.

BEARING NOTE:
BEARINGS ARE UTM GRID, DERIVED FROM REAL TIME NETWORK (RTN) OBSERVATIONS, UTM ZONE 17, NAD83 (CSRS) (2010.0).

Contractor Must Check And Verify All Dimensions On The Job.

All Drawings, Specifications And Related Documents Are The Copyright Of The Engineer And Must Be Returned Upon Request.

Reproduction Of Drawings, Specifications And Related Documents In Part Or Whole Is Forbidden Without The Engineers Written Permission.

This Drawing Is Not To Be Used For Construction Until Signed By The Engineer.

NOTES:
THE INFORMATION DENOTED IN BOXES [] WITHIN THE DRAWING DETAILS ON THIS SHEET ARE CONSIDERED TO BE PROPOSED DESIGN/SPECIFICATIONS. ALL OTHER INFORMATION IS SHOWN FOR CONTEXT ONLY REFER TO THE APPROPRIATE DRAWINGS BY THE ARCHITECT, LANDSCAPE ARCHITECT, STRUCTURAL ENGINEER AND MECHANICAL ENGINEER FOR DETAIL DESIGN AND SPECIFICATION OF OTHER DESIGN ELEMENTS.



Drawing Prepared By:

RVA
R.V. ANDERSON ASSOCIATES LIMITED

Client:
TWO SISTERS RESORTS CORP.

Project Name:

PARLIAMENT OAK INN
325 KING ST.

Drawing Title:

SITE GRADING PLAN

Drawn:	SO	Design:	SO	Date:	JULY 2023
Checked:	SDF	Approved:	AST	Scale:	1:200
CADD File:	226757-S-5G1.dwg	Dwg. No.:			
Project No.:	226757				SG1

RECENT STREET

CENTRE STREET

KING STREET

325 KING STREET
PARLIAMENT OAK HOTEL
4 STOREYS

GF FFE 88.53
B1 FFE 83.90
B2 FFE 80.85

No.	Revision	Comments
1	2023-02-02	ISSUED FOR 1 ST 2BA SUBMISSION
2	2024-08-30	ISSUED FOR 1 ST SPA SUBMISSION
3	2024-11-17	ISSUED FOR BUILDING PERMIT
4	2025-03-07	RE-ISSUED FOR SPA SUBMISSION
5	2025-07-23	RE-ISSUED FOR SPA SUBMISSION

LEGEND

- PROPERTY LINE
- UNDERGROUND PARKING STRUCTURE
- AREA DRAIN
- ACCESS OPENING FRAME & GRATE (F&G)
- SEWER AND FLOW DIRECTION
- WATERMAIN
- VALVE & BOX (V&B)
- FIRE DEPARTMENT CONNECTION
- FIRE HYDRANT
- WATER METER & BACK FLOW PREVENTER
- DETECTOR ASSEMBLY
- PROPOSED SEWER CAP
- PROPOSED LIGHT STANDARD
- BORERHOLE LOCATION (REFER TO GEOTECH INVESTIGATION REPORT)
- EXISTING MUNICIPAL SIGN
- EXISTING HYDRO POLE
- EXISTING BELL
- EXISTING GAS MAIN
- EXISTING GUY WIRE

BENCH MARK:
ELEVATIONS SHOWN ON THIS PLAN ARE EXTRACTED FROM TOPOGRAHICAL SKETCH OF 325 KING ST., BY J.D. BARNES DATED NOVEMBER 25, 2022. ELEVATIONS ARE OF GEODETIC ORIGIN (CQD-1928.7), AND ARE DERIVED FROM CHS OBSERVATIONS AND NATURAL RESOURCES CANADA'S GRID MODEL HT2.0.

MEASUREMENT NOTE:
BEARINGS ARE UTM GRID, DERIVED FROM REAL TIME NETWORK (RTN) OBSERVATIONS, UTM ZONE 17, NAD83 (CSRS) (2010.0).

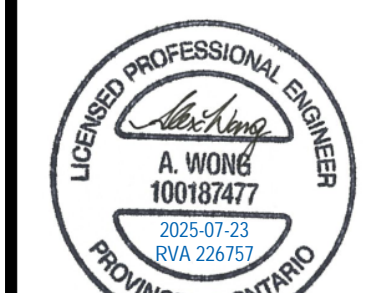
Contractor Must Check And Verify All Dimensions On The Job.

All Drawings, Specifications And Related Documents Are The Copyright Of The Engineer And Must Be Returned Upon Request.

Reproduction Of Drawings, Specifications And Related Documents In Part Or Whole Is Forbidden Without The Engineer's Written Permission.

This Drawing Is Not To Be Used For Construction Until Signed By The Engineer.

NOTES:
THE INFORMATION DOTTED IN BOXES WITHIN THE DRAWING DETAILS ON THIS SHEET ARE CONSIDERED TO BE PROPOSED DESIGN/SPECIFICATIONS. ALL OTHER INFORMATION IS SHOWN FOR CONTEXT ONLY. REFER TO THE APPROPRIATE DRAWINGS BY THE ARCHITECT, LANDSCAPE ARCHITECT, STRUCTURAL ENGINEER AND MECHANICAL ENGINEER FOR DETAIL DESIGN AND SPECIFICATION OF OTHER DESIGN ELEMENTS.



Drawing Prepared By:

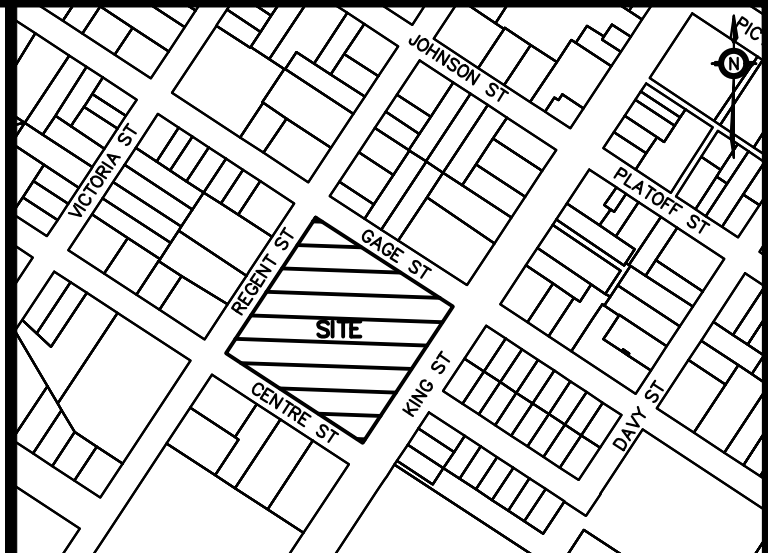
RVA
R.V. ANDERSON ASSOCIATES LIMITED

Client:
TWO SISTERS RESORTS CORP.

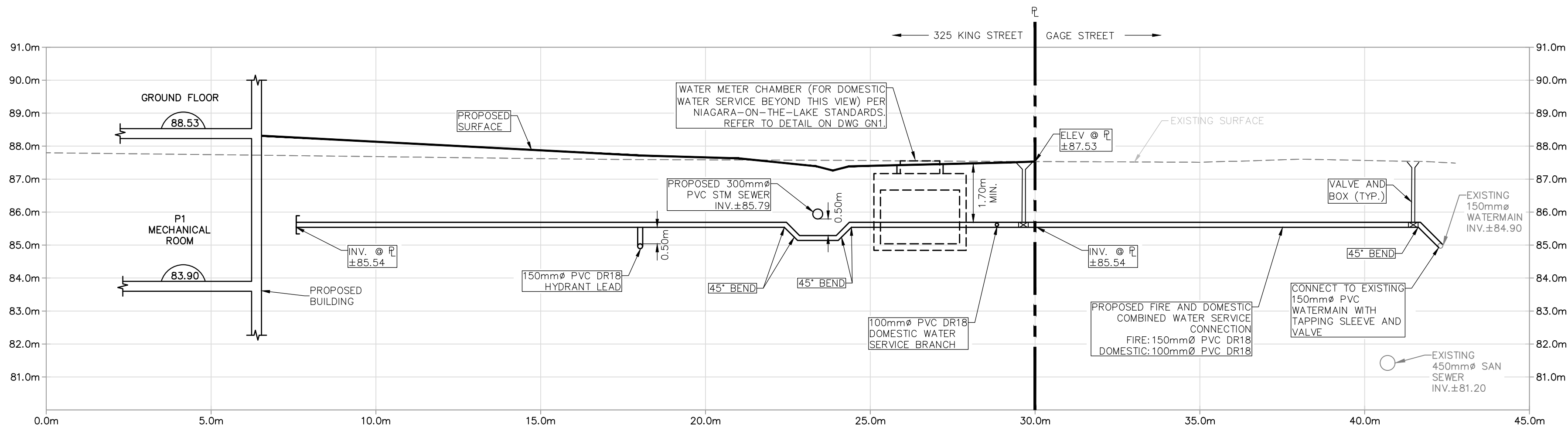
Project Name:
**PARLIAMENT OAK INN
325 KING ST.**

Drawing Title:
SITE SERVICING PLAN

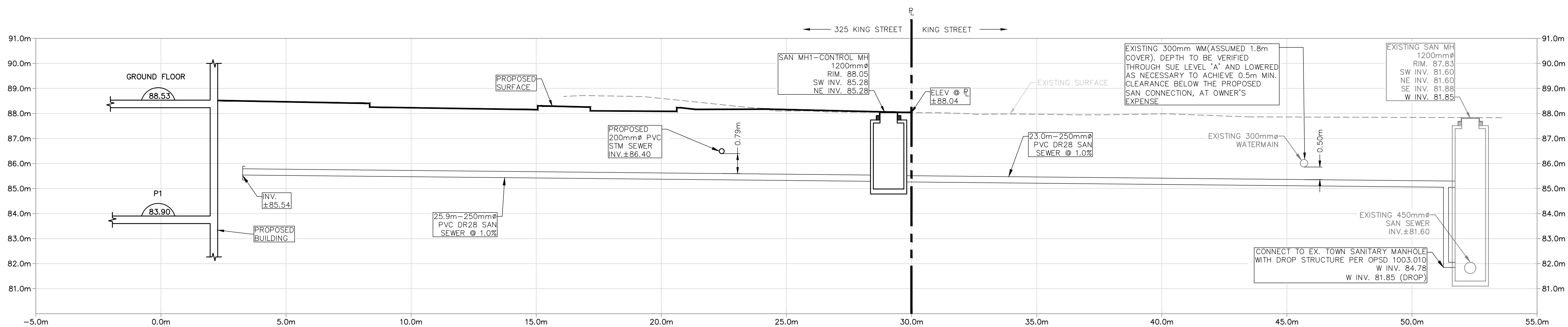
Drawn	SO	Design	SO	Date	JULY 2023
Checked	SDF	Approved	AST	Scale	1:200
CADD File	226757-S-551.dwg	Dwg. No.			
Project No.	226757				SS1



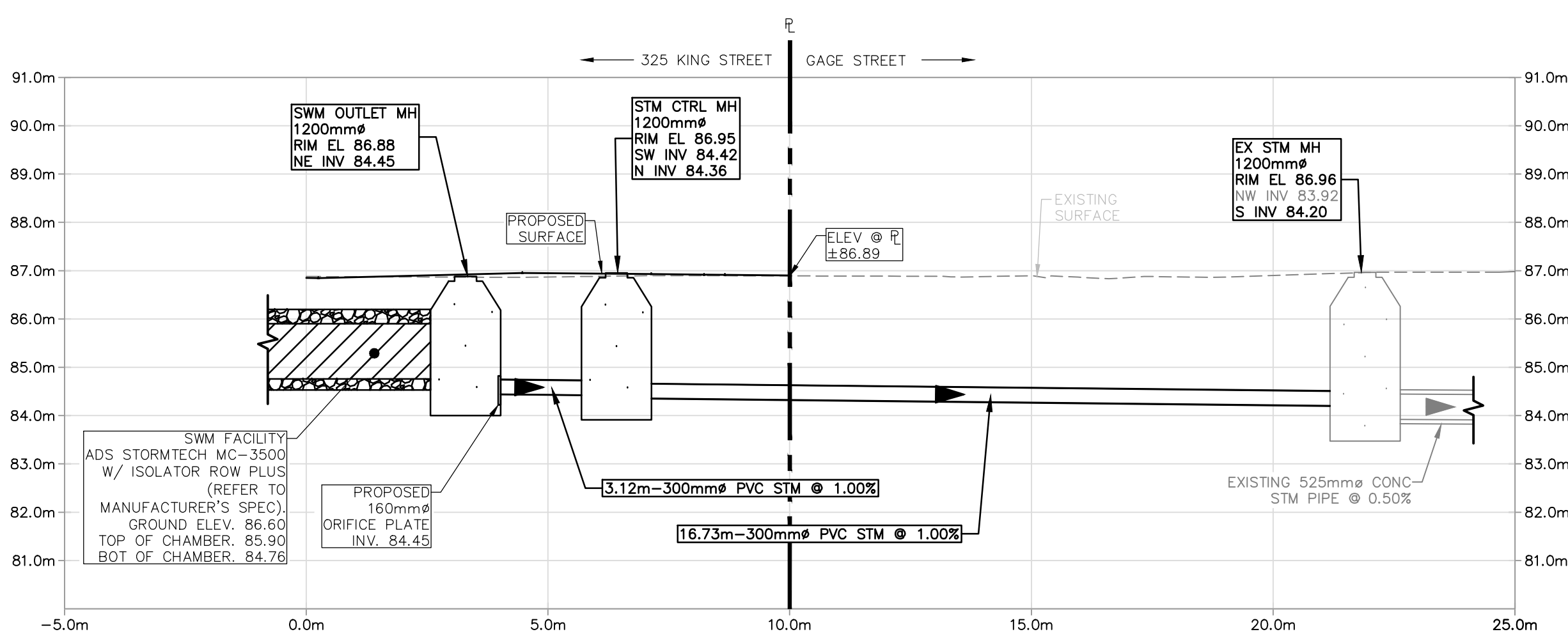
REV. PLANT		
No.	Revision	Comments
1	2023-02-02	ISSUED FOR 1 ST ZBA SUBMISSION
2	2024-08-16	ISSUED FOR 1 ST SPA SUBMISSION
3	2025-07-23	RE-ISSUED FOR SPA SUBMISSION



SECTION 1 - WAT 0+22.91
SCALE 1:100



SAN SERVICE 0+55.00
SCALE 1:100



SECTION 3 - STM 0+25.00
SCALE 1:100



Drawing Prepared By



Client: TWO SISTERS RESORTS CORP.

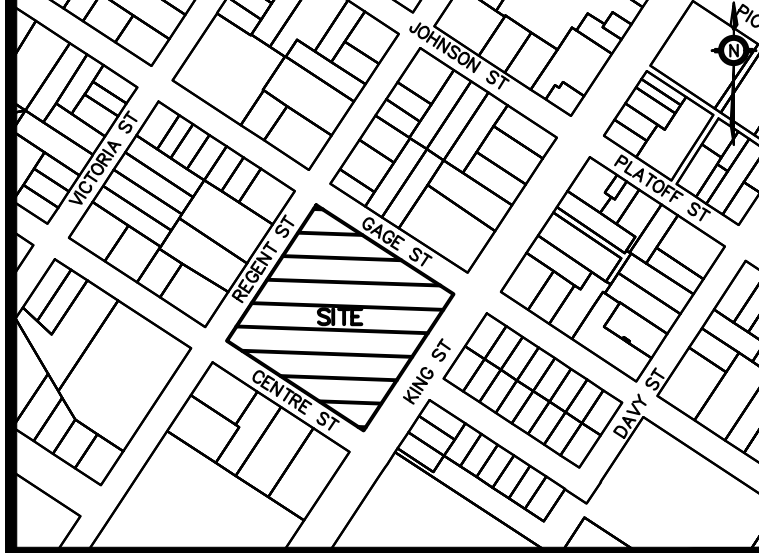
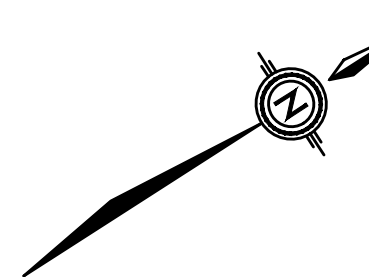
Project Name:

PARLIAMENT OAK INN
325 KING ST.

Drawing Title:

SERVICING CROSS SECTIONS

Drawn:	SO	Design:	SO	Date:	JULY 2023
Checked:	SDF	Approved:	AST	Scale:	AS SHOWN
CADD File:	226757-S-551.dwg				Dwg. No.
Project No.:	226757				SEC1



KEY PLAN		
No.	Revision	Comments
1	2023-02-02	ISSUED FOR 1 ST ZBA SUBMISSION
2	2024-08-30	ISSUED FOR 1 ST SPA SUBMISSION
3	2025-03-07	RE-ISSUED FOR SPA SUBMISSION
4	2025-07-23	RE-ISSUED FOR SPA SUBMISSION

THIS DRAWING TO BE READ IN CONJUNCTION WITH ALL OTHER DRAWINGS PREPARED BY RVA.

LEGEND	
---	PROPERTY LINE
✕	REMOVE AND DISPOSE OFF SITE
//	ABANDON IN-PLACE
	ASPHALT REMOVAL

BENCH MARK:
ELEVATIONS SHOWN ON THIS PLAN ARE EXTRACTED FROM TOPOGRAPHICAL SKETCH OF 325 KING ST., BY J.D. BARNES DATED NOVEMBER 25, 2022. ELEVATIONS ARE OF GEODETIC ORIGIN (GVD-1928.7), AND ARE DERIVED FROM CHRS OBSERVATIONS AND NATURAL RESOURCES CANADA'S GSD MODEL HT2.0.

BEARING NOTE:
BEARINGS ARE UTM GRID, DERIVED FROM REAL TIME NETWORK (RTN) OBSERVATIONS, UTM ZONE 17, NAD83 (CSRS) (2010.0).

Contractor Must Check And Verify All Dimensions On The Job. All Drawings, Specifications And Related Documents Are The Copyright Of The Engineer And Must Be Returned Upon Request.

Reproduction Of Drawings, Specifications And Related Documents In Part Or Whole Is Forbidden Without The Engineers Written Permission.

This Drawing Is Not To Be Used For Construction Until Signed By The Engineer.

NOTE:
THE INFORMATION DENOTED IN BOXES WITHIN THE DRAWING DETAILS ON THIS SHEET ARE CONSIDERED TO BE PROPOSED DESIGN/SPECIFICATIONS. ALL OTHER INFORMATION IS SHOWN FOR CONTEXT ONLY. REFER TO THE APPROPRIATE DRAWINGS BY THE ARCHITECT, LANDSCAPE ARCHITECT, STRUCTURAL ENGINEER AND MECHANICAL ENGINEER FOR DETAIL DESIGN AND SPECIFICATION OF OTHER DESIGN ELEMENTS.



Drawing Prepared By:

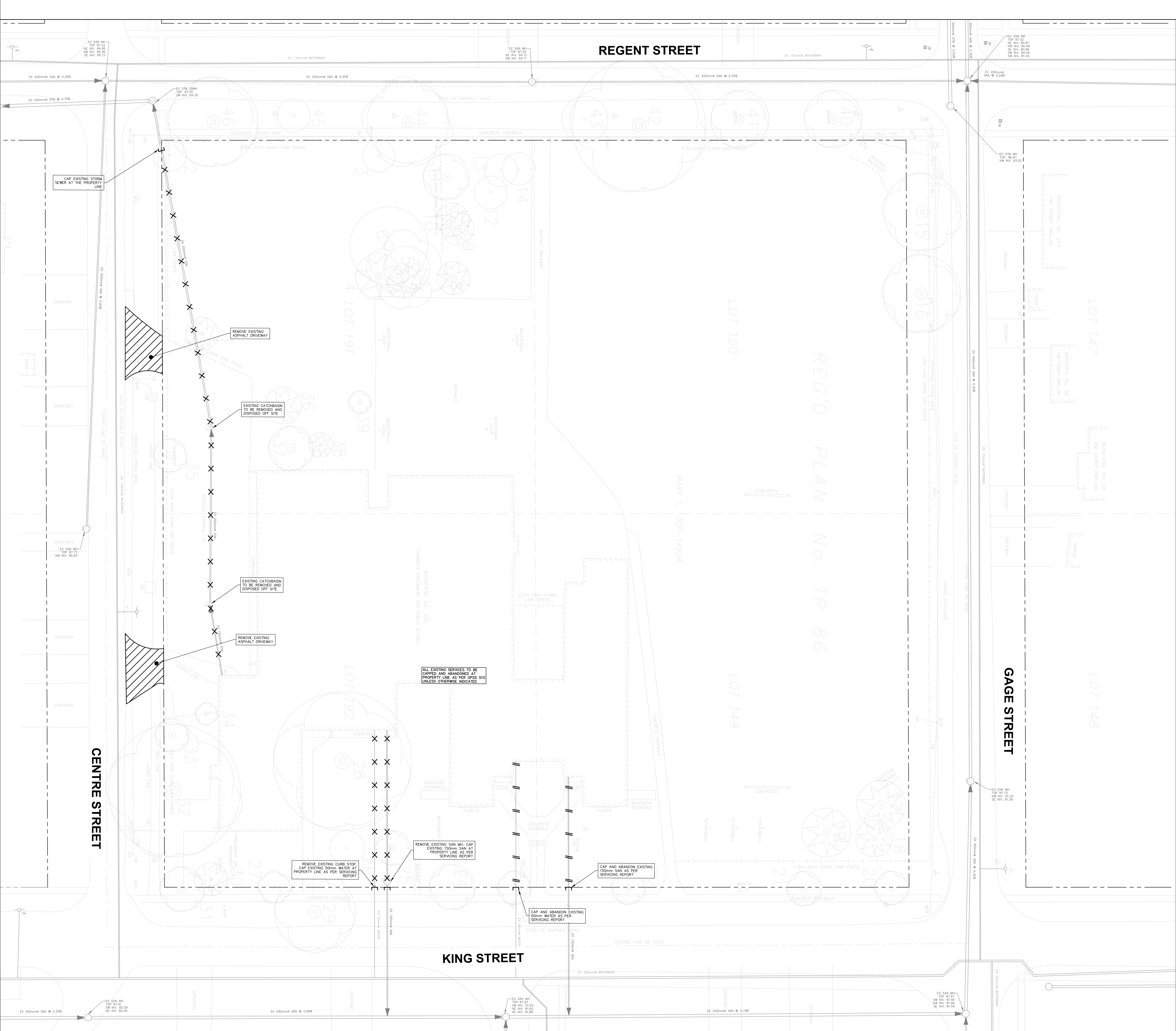


Client: **TWO SISTERS RESORTS CORP.**

Project Name: **PARLIAMENT OAK INN
325 KING ST.**

Drawing Title: **SERVICING REMOVALS PLAN**

Drawn	SO	Design	SO	Date	JULY 2023
Checked:	SDF	Approved:	AST	Scale:	1:200
CADD File:	226757-S-REM1.dwg				Dwg. No.
Project No.:	226757				REM1



REGENT STREET

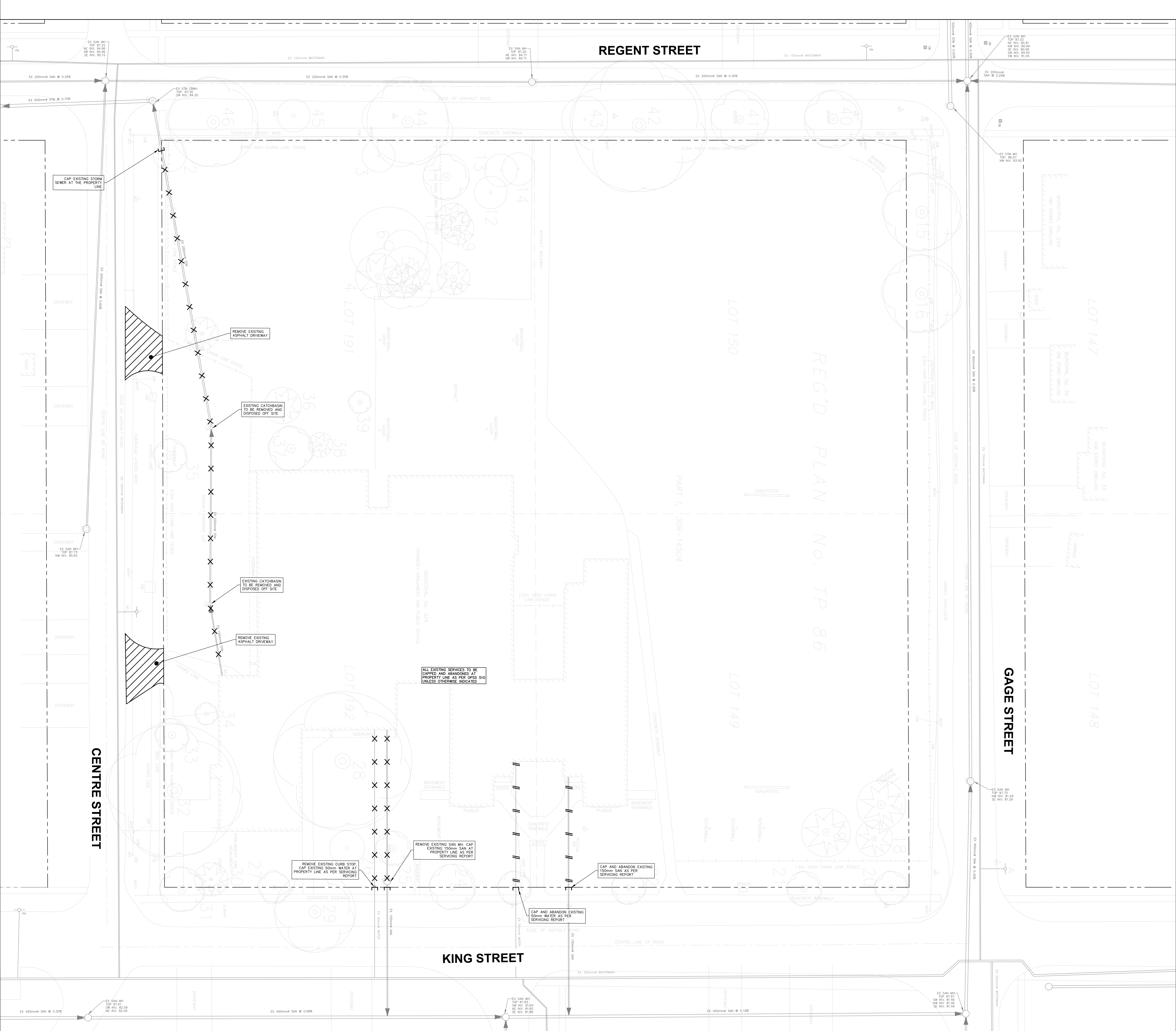
GAGE STREET

CENTRE STREET

KING STREET

REC'D PLAN NO. TP 86

PART 1, 30R-14504



REGENT STREET

GAGE STREET

CENTRE STREET

KING STREET

REC'D PLAN NO. TP 86

PART 1, 30R-14504

