

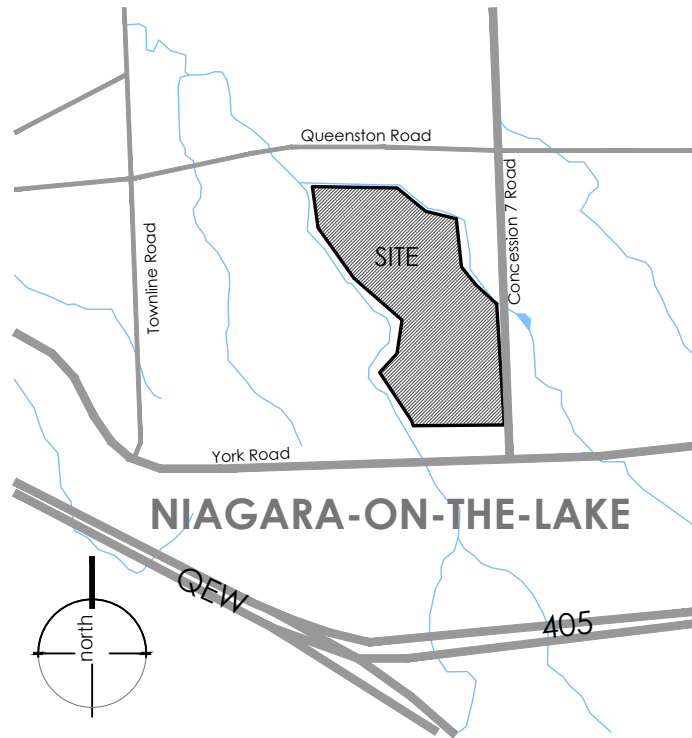
LANDSCAPE NOTES:

- All work to be carried out in accordance with by-laws and codes having jurisdiction over site location.
- Complete all work to the satisfaction of the Landscape Architect.
- Report any changes, discrepancies or substitutions to the Landscape Architect for review. Obtain approval from the Landscape Architect before proceeding.
- It is the contractor's responsibility to determine existing service locations.
- Exact locations of plant material will be determined by placement of site services such as hydro vaults, meters, utilities roof rain water leaders, driveways, light standards, etc.
- All plant material locations to be staked or marked out and approved by Landscape Architect prior to installation.
- Supply all plant material in accordance with the Canadian Standards for Nursery Stock (8th ed.).
- Install plant material according to details shown.
- Supply and place mulch in accordance with Canadian Landscape Standard (Section 10, Mulching). Disturbed soil areas around trees and shrubs are to be covered with shredded conifer bark mulch such as 'Cedar Bark Mulch' by All Treat Farms or 'Classic Cedar Mulch' by Gro-Bark, or approved equivalent. Alternative mulches must be approved by the Landscape Architect.
- Contractor to utilize layout dimensions where provided.
- Provide planting bed area as noted on the drawing or to accommodate mature size of plant material.
- All support systems must be removed by the contractor at time of final acceptance. No extras will be paid to complete this work.
- Supply and place topsoil in accordance with Canadian Landscape Standard (Section 4, Grading & Drainage and Section 6, Growing Medium) to a minimum depth of 150mm unless otherwise specified.
- Supply and place sod in accordance with Canadian Landscape Standard (Section 7, Lawns & Grass and Section 8, Turfgrass Sod) unless otherwise specified.
- Supply and place seed in accordance with Canadian Landscape Standard (Section 4, Grading & Drainage and Section 6, Growing Medium) unless otherwise specified. All 5:1 or greater slopes to be seeded with topsoil. Contractor to provide necessary erosion control protection as required to ensure soil stabilization and proper seed germination.
- All dimensions in meters unless otherwise noted.
- If discrepancies arise between plant material count shown on drawing and plant list, the drawing shall be considered correct.
- Contractor to provide minimum one (1) year warranty (including trees on municipal property) from date accepted on all work unless otherwise specified.
- Any site plan or grading and servicing shown is for information only. Refer to approved drawings.
- Not for construction unless stamped, signed and dated by Landscape Architect.
- Drawings not to be reproduced without written consent from Landscape Architect.
- Approval of landscape plan to be obtained from municipality.
- All plant material to be planted a minimum of 1.0m from any swales or ditches.
- For grading and servicing information refer to the consulting Engineer's drawings.
- For lighting information and power distribution refer to the electrical consultant's drawings.

PLANT SCHEDULE

QTY	BOTANICAL NAME	COMMON NAME	SIZE	COND.	MATURE HT. (M)	MATURE SPR. (M)	O.C. (M)	REMARKS
TREES								
5	<i>Acer rubrum</i>	Red Maple	50mm Cal.	W.B.	15.0	12.0	As Shown	Native to Ontario
19	<i>Acer saccharum</i> 'Columnare'	Columnar Sugar Maple	50mm Cal.	W.B.	11.0	3.0	As Shown	As Shown
17	<i>Acer saccharum</i> 'Endowment'	Endowment Sugar Maple	50mm Cal.	W.B.	17.0	6.0	As Shown	As Shown
16	<i>Gleditsia triacanthos inermis</i> 'Ruby Lace'	Ruby Lace Honey Locust	50mm Cal.	W.B.	8.0	7.0	As Shown	As Shown
27	<i>Ostrya virginiana</i>	Ironwood	50mm Cal.	W.B.	10.0	7.0	As Shown	Native to Ontario
4	<i>Tilia americana</i>	American Linden	50mm Cal.	W.B.	20.0	13.0	As Shown	Native to Ontario

KEY MAP - N.T.S.



LEGEND

- property line
- existing tree to remain
- proposed deciduous tree
- proposed shrub
- proposed perennial
- min. 150mm topsoil, fine grade & sod
- C.I.P. concrete
- proposed transformer

NOT FOR CONSTRUCTION
ISSUED FOR REVIEW & COMMENTS ONLY

REVISIONS/ SUBMISSIONS

#	DATE	DESCRIPTION
1	2025-04-02	Issued for coordination
2	2025-04-08	Issued for coordination
3	2025-04-28	Issued for client review
4	2025-05-14	Issued for submission



CLIENT
Marz Homes
MUNICIPALITY
Town of Niagara-on-the-Lake

PROJECT
Modero Estates - Block 84

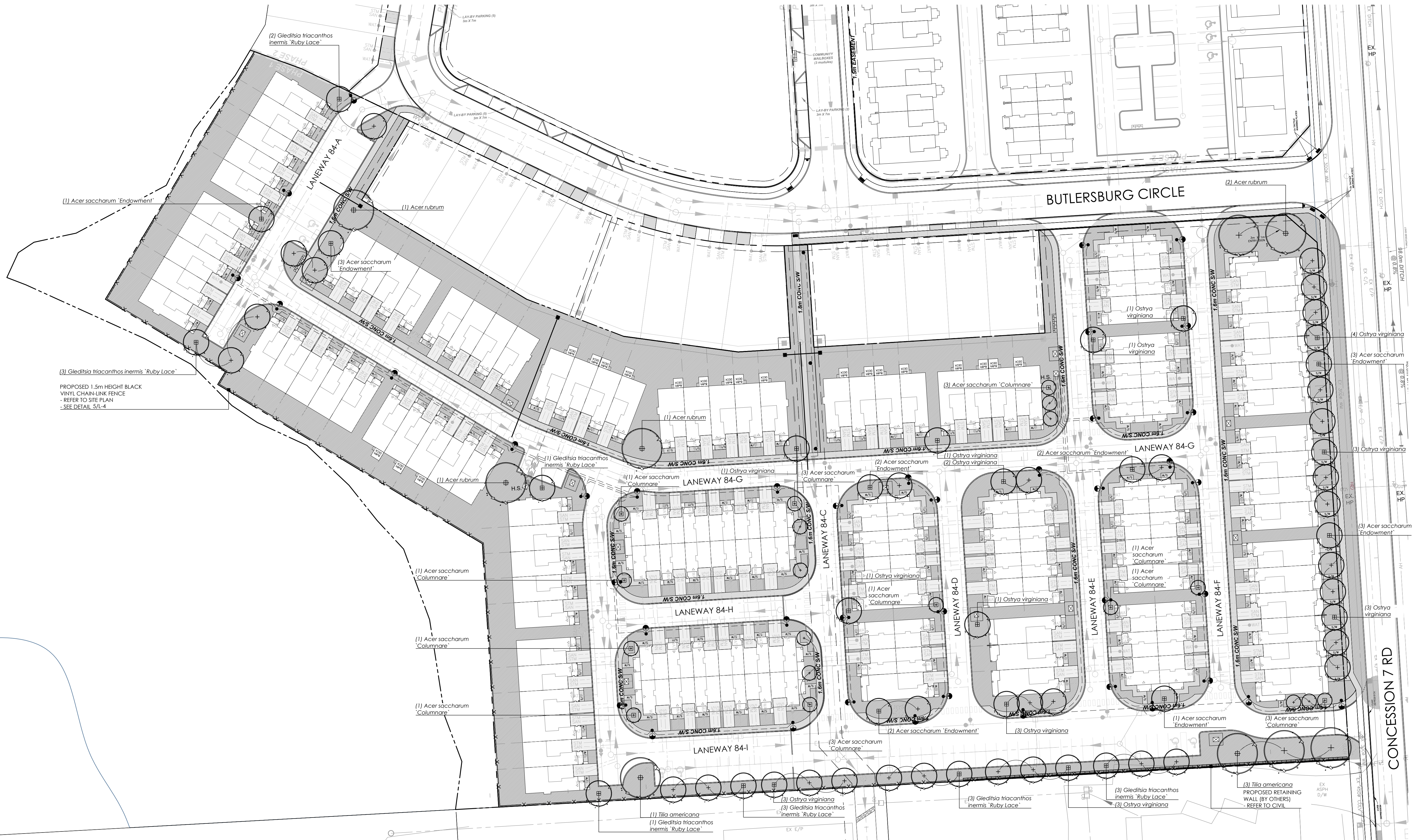
MUNICIPAL FILE NUMBER

SHEET
Landscape Plan

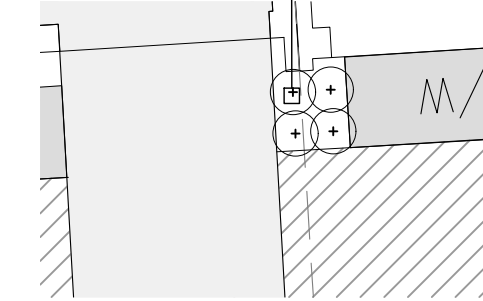
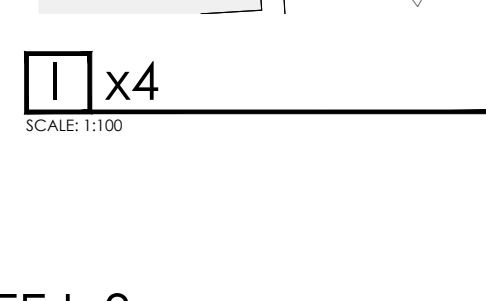
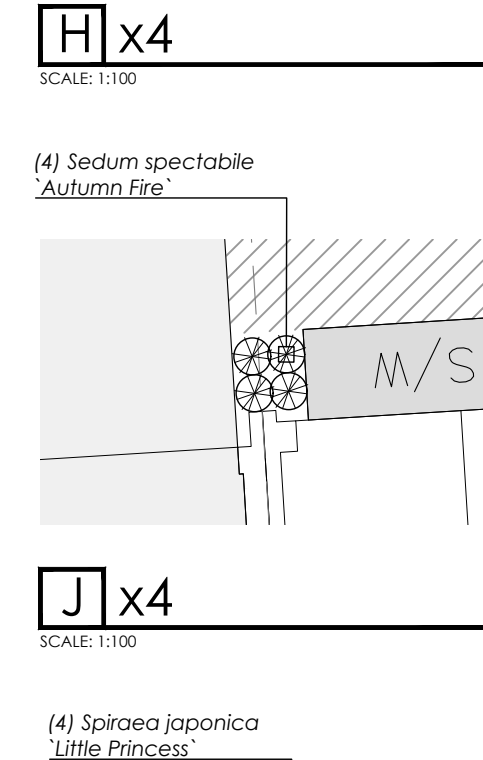
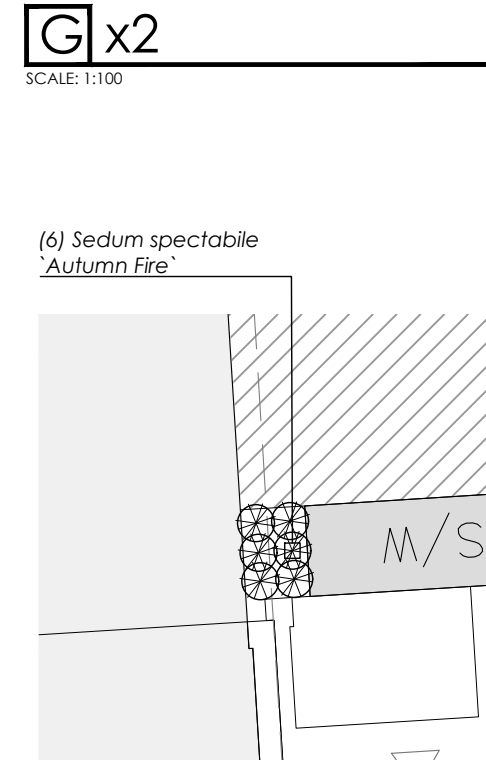
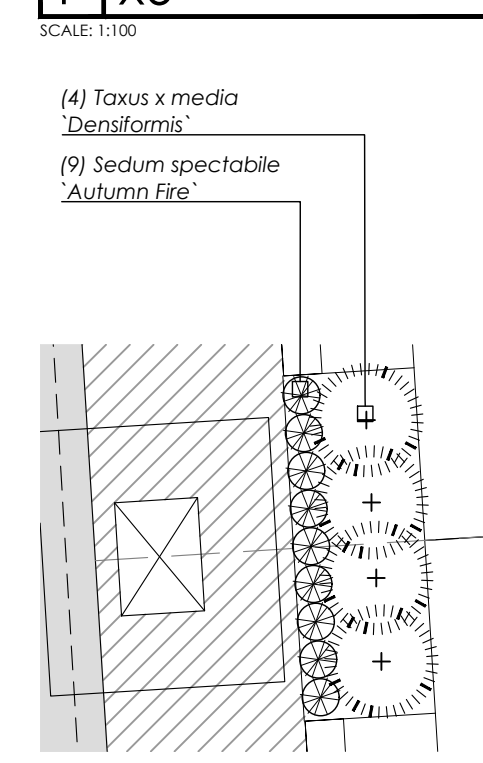
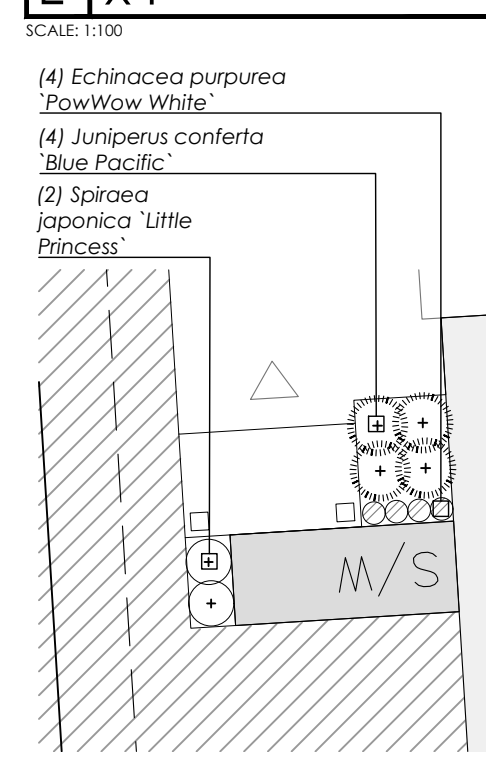
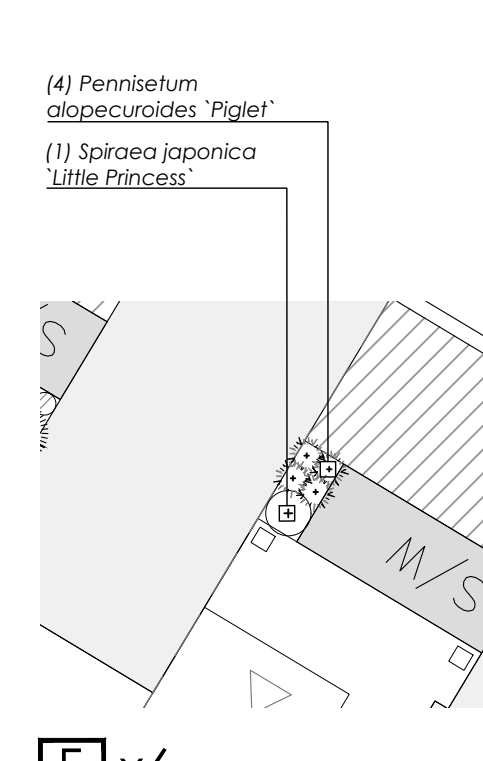
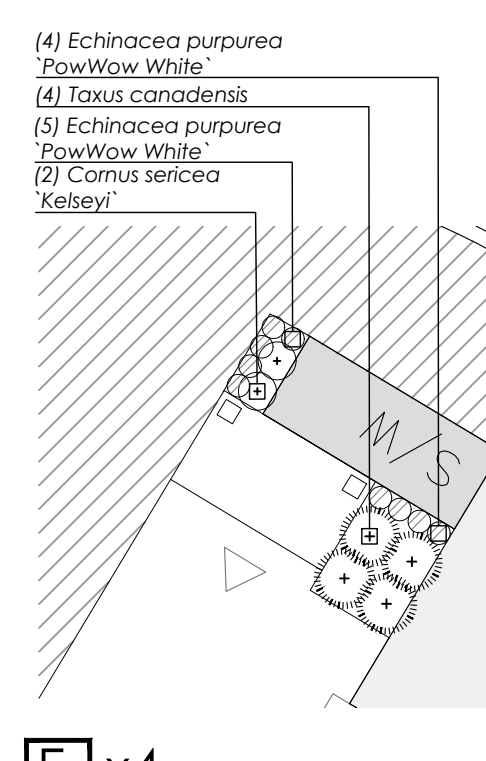
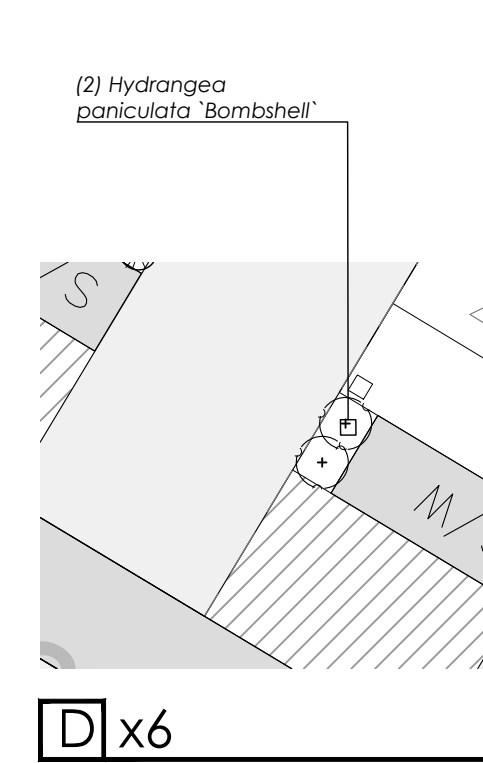
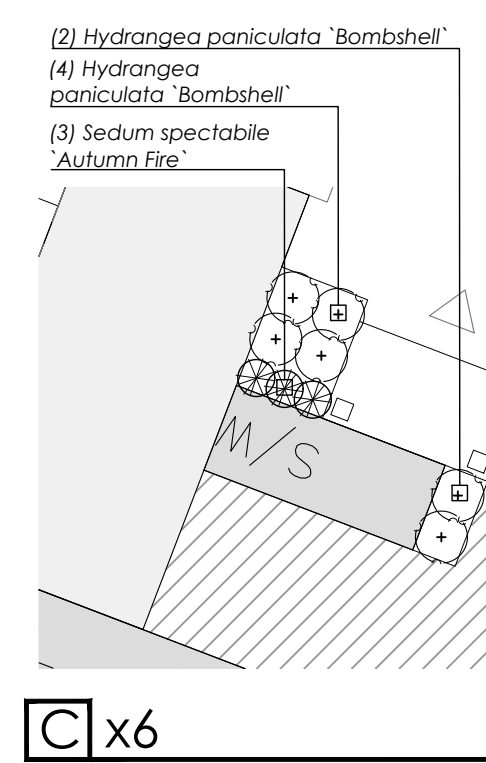
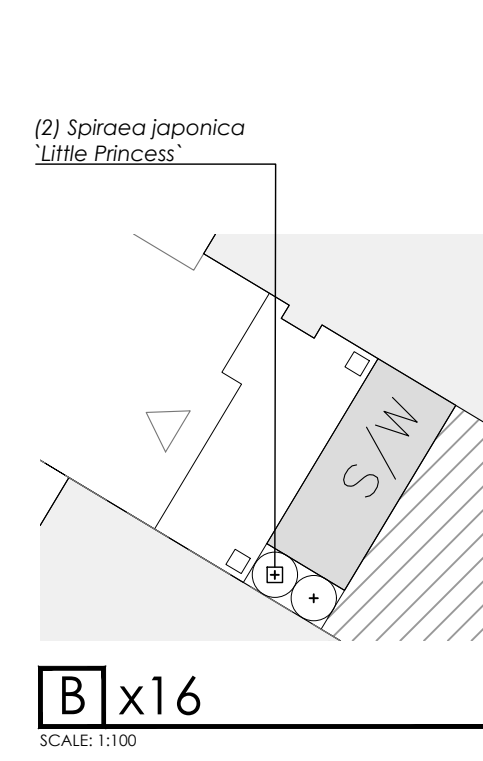
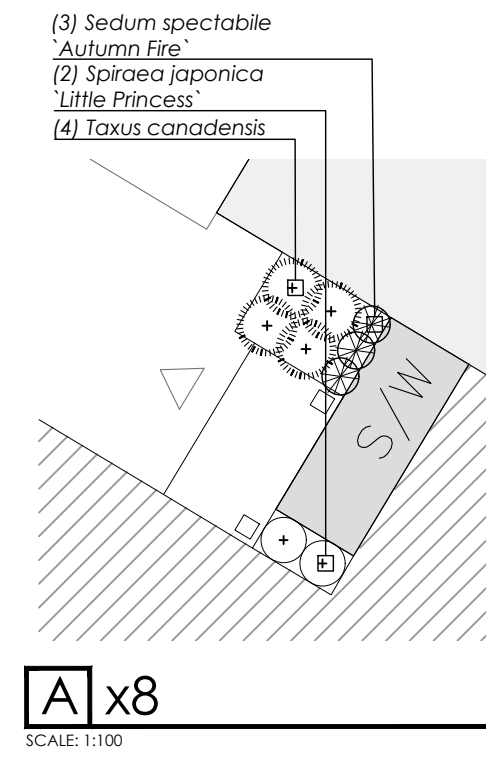
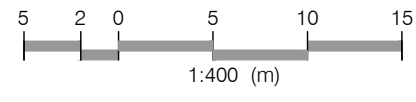
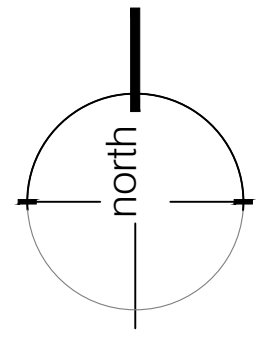
L-1

adesso design inc.
landscape architecture

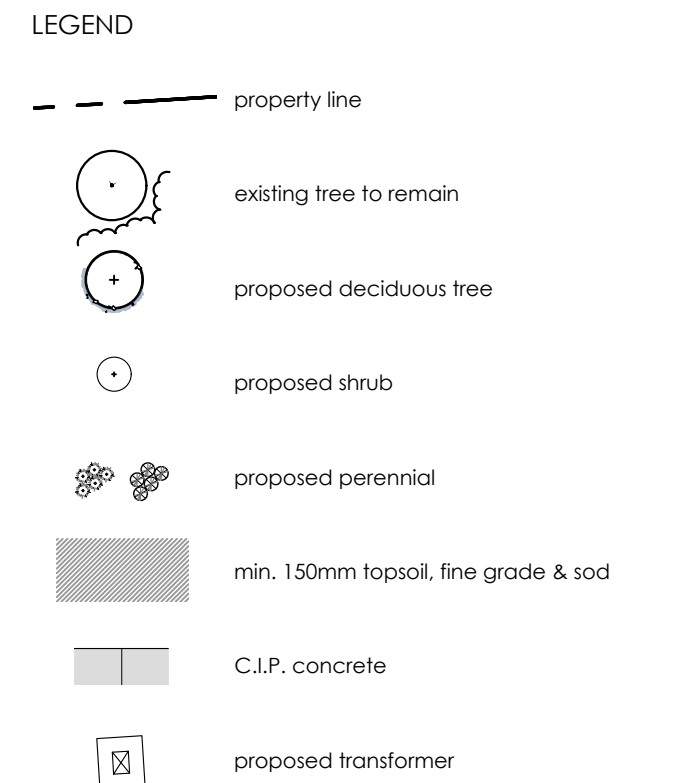
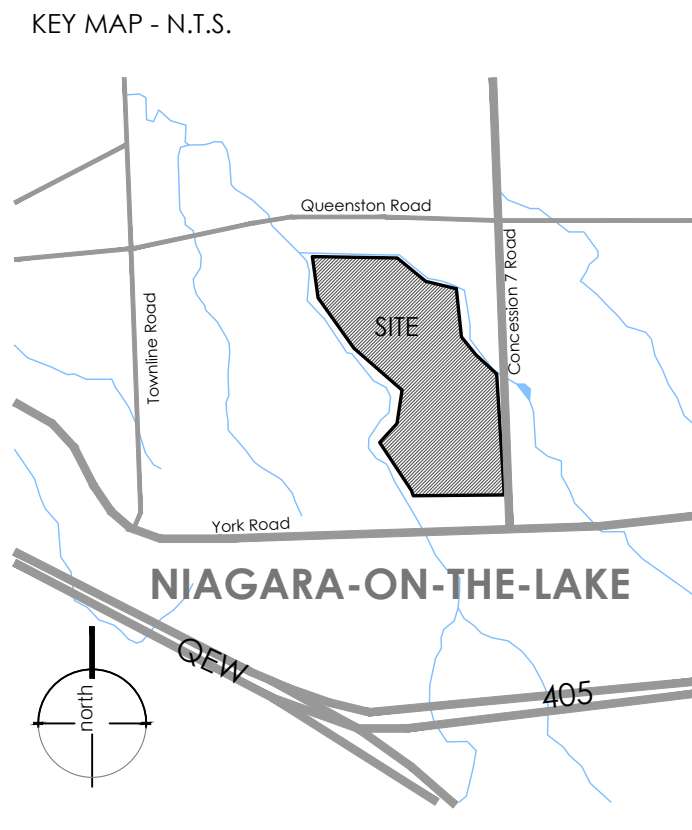
69 John Street South, Suite 250
Hamilton, ON L8N 2B9
t. 905.526.8876
www.adessodesigninc.ca



ALL DIMENSIONS ARE IN METERS UNLESS OTHERWISE NOTED. THIS PLAN IS THE PROPERTY OF ADesso DESIGN INC. AND IS NOT TO BE REPRODUCED OR TRANSMITTED IN ANY FORM OR BY ANY MEANS, ELECTRONIC OR MECHANICAL, WITHOUT THE WRITTEN PERMISSION OF ADesso DESIGN INC. DATE: 2025-05-14.



- LANDSCAPE NOTES:**
- All work to be carried out in accordance with by-laws and codes having jurisdiction over site location.
 - Complete all work to the satisfaction of the Landscape Architect.
 - Report any changes, discrepancies or substitutions to the Landscape Architect for review. Obtain approval from the Landscape Architect before proceeding.
 - It is the contractor's responsibility to determine existing service locations.
 - Exact locations of plant material will be determined by placement of site services such as hydro vaults, meters, utilities roof rain water leaders, driveways, light standards, etc.
 - All plant material locations to be staked or marked out and approved by Landscape Architect prior to installation.
 - Supply all plant material in accordance with the Canadian Standards for Nursery Stock (8th ed.).
 - Install plant material according to details shown.
 - Supply and place mulch in accordance with Canadian Landscape Standard (Section 10, Mulching). Disturbed soil areas around trees and shrubs are to be covered with shredded conifer bark mulch such as 'Cedar Bark Mulch' by All Treat Farms or 'Classic Cedar Mulch' by Gro-Bark, or approved equivalent. Alternative mulches must be approved by the Landscape Architect.
 - Contractor to utilize layout dimensions where provided.
 - Provide planting bed area as noted on the drawing or to accommodate mature size of plant material.
 - All support systems must be removed by the contractor at time of final acceptance. No extras will be paid to complete this work.
 - Supply and place topsoil in accordance with Canadian Landscape Standard (Section 4, Grading & Drainage and Section 6, Growing Medium) to a minimum depth of 150mm unless otherwise specified.
 - Supply and place sod in accordance with Canadian Landscape Standard (Section 7, Lawns & Grass and Section 8, Turfgrass Sod) unless otherwise specified.
 - Supply and place seed in accordance with Canadian Landscape Standard (Section 4, Grading & Drainage and Section 6, Growing Medium) unless otherwise specified. All 5:1 or greater slopes to be seeded with topsoil. Contractor to provide necessary erosion control protection as required to ensure soil stabilization and proper seed germination.
 - All dimensions in meters unless otherwise noted.
 - If discrepancies arise between plant material count shown on drawing and plant list, the drawing shall be considered correct.
 - Contractor to provide minimum one (1) year warranty (including trees on municipal property) from date accepted on all work unless otherwise specified.
 - Any site plan or grading and servicing shown is for information only. Refer to approved drawings.
 - Not for construction unless stamped, signed and dated by Landscape Architect.
 - Drawings not to be reproduced without written consent from Landscape Architect.
 - Approval of landscape plan to be obtained from municipality.
 - All plant material to be planted a minimum of 1.0m from any swales or ditches.
 - For grading and servicing information refer to the consulting Engineer's drawings.
 - For lighting information and power distribution refer to the electrical consultant's drawings.



NOT FOR CONSTRUCTION
ISSUED FOR REVIEW & COMMENTS ONLY

REVISIONS/ SUBMISSIONS

#	DATE	DESCRIPTION
1	2025-04-02	Issued for coordination
2	2025-04-08	Issued for coordination
3	2025-04-28	Issued for client review
4	2025-05-14	Issued for submission



CLIENT
Marz Homes

MUNICIPALITY
Town of Niagara-on-the-Lake

PROJECT
Modero Estates - Block 84

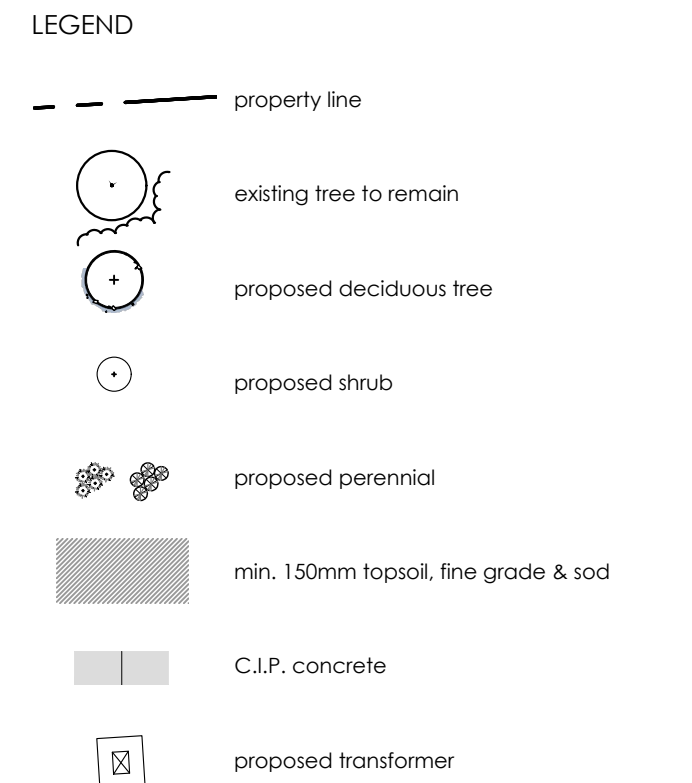
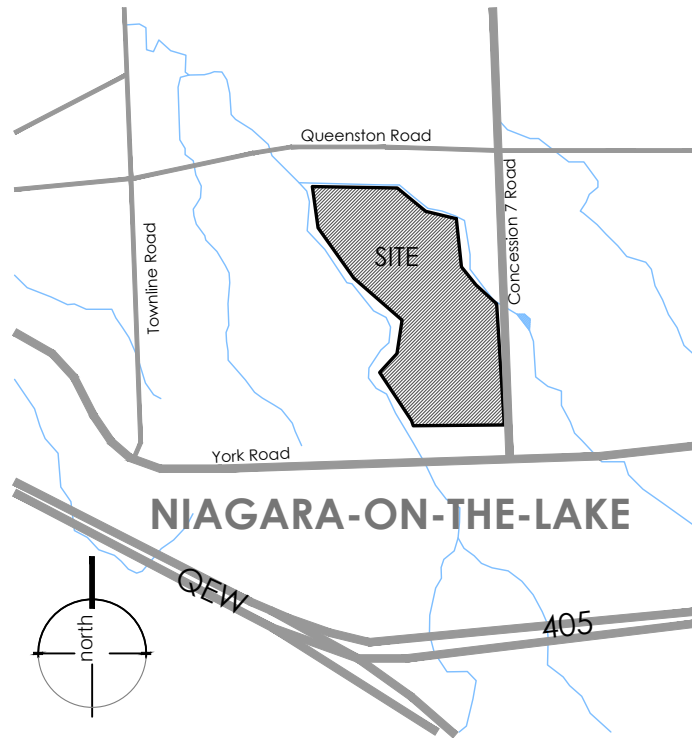
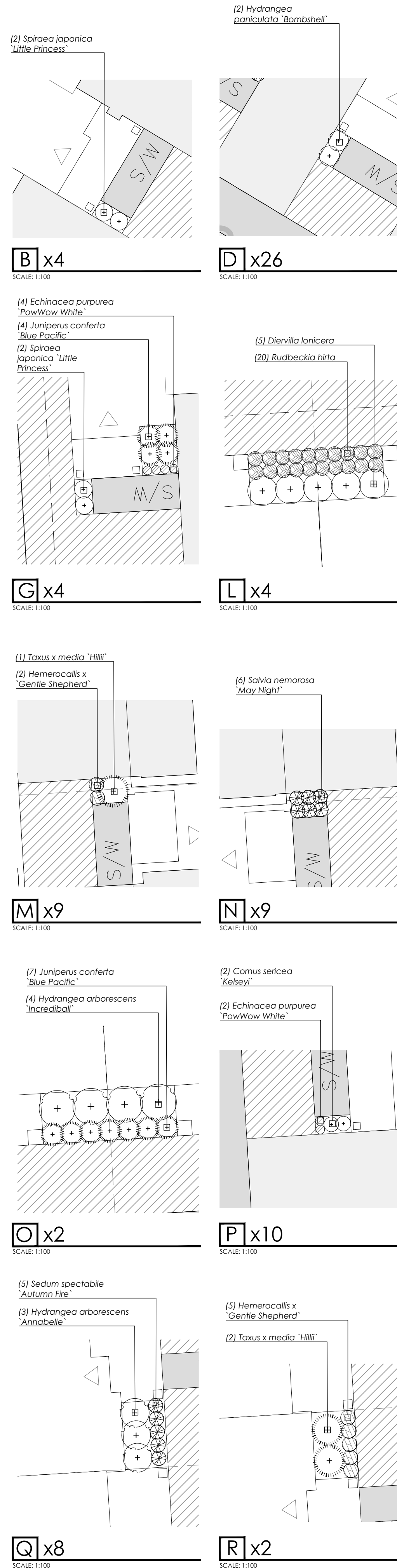
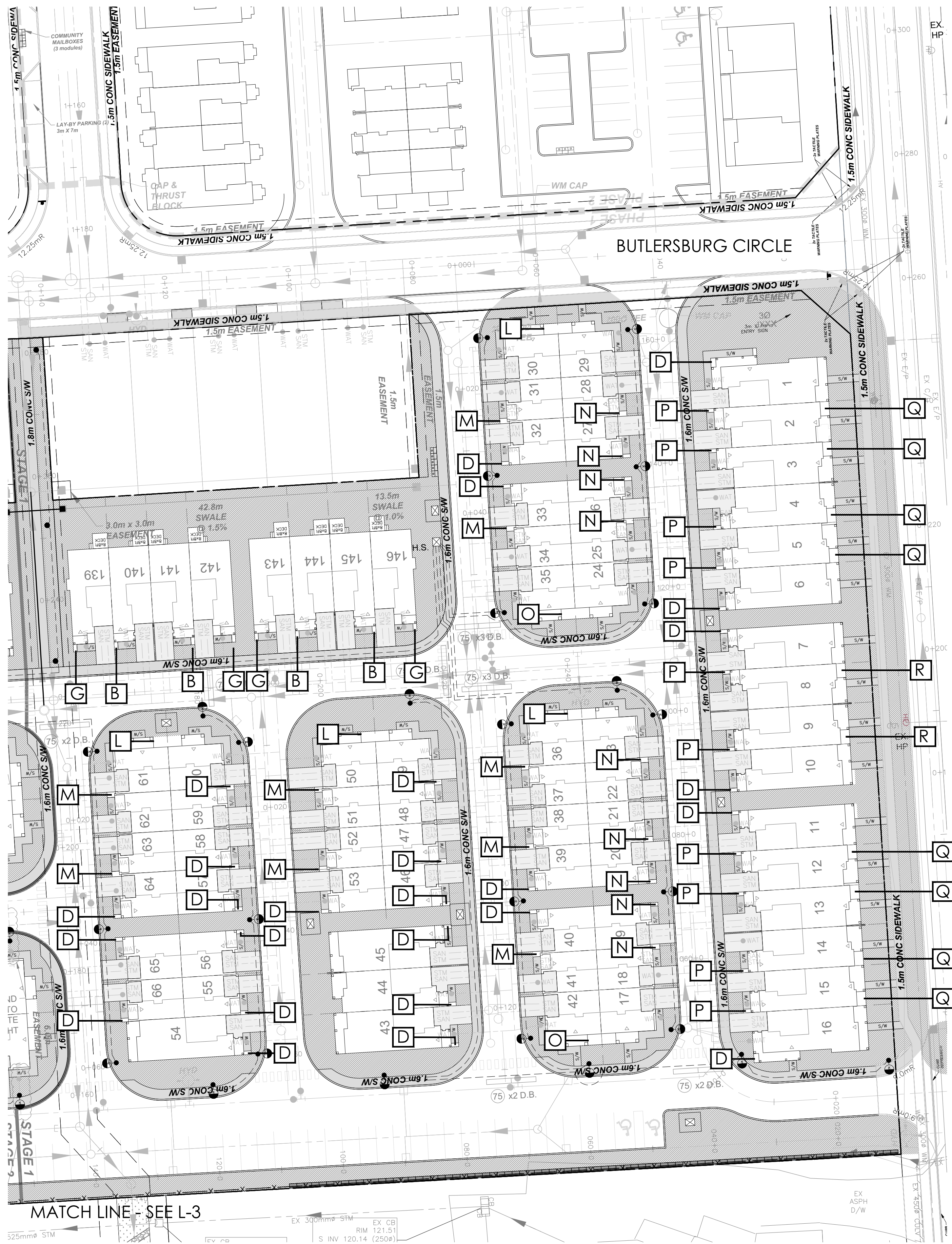
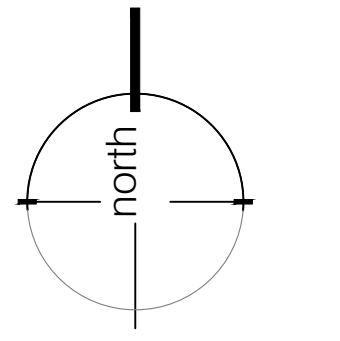
MUNICIPAL FILE NUMBER

SHEET
Unit Planting Plan

L-2

adesso design inc.
landscape architecture

69 John Street South, Suite 250
Hamilton, ON L8N 2B9
t. 905.526.8876
www.adessodesigninc.ca



NOT FOR CONSTRUCTION
ISSUED FOR REVIEW & COMMENTS ONLY

REVISIONS/ SUBMISSIONS

#	DATE	DESCRIPTION
1	2025-04-02	Issued for coordination
2	2025-04-08	Issued for coordination
3	2025-04-28	Issued for client review
4	2025-05-14	Issued for submission



CLIENT
Marz Homes

MUNICIPALITY
Town of Niagara-on-the-Lake

PROJECT
Modero Estates - Block 84

MUNICIPAL FILE NUMBER

SHEET
Unit Planting Plan

adesso design inc.
landscape architecture

69 John Street South, Suite 250
Hamilton, ON L8N 2B9
1.905.526.8876
www.adessodesigninc.ca

