

ACTIVITIES | CLUBS | CULTURE | SERVICES



FALL/WINTER 2024-2025

COMMUNITY GUIDE

WWW.NOTL.COM

CELEBRATING

50

YEARS

1974 • 2024

Niagara on the Lake Realty

1994 Limited Real Estate Brokerage



Our name is in your search.

www.notlrealty.com

Sotheby's | Canada
INTERNATIONAL REALTY



Move beyond your expectations.

We're dedicated to designing an extraordinary experience for every client, at every price point. Work with us and discover how your next move can be next level.

[SOTHEBYSREALTY.CA](https://sothebysrealty.ca)
905.468.0001



Crescent
DISTINCTIVE CARPET | CUSTOM RUGS

Rosecore
LUXURIOUS CARPET & CUSTOM RUGS

KANE
CARPET

FABRICA
FINE CARPET & RUGS

STANTON
CARPET + CUSTOM RUGS + RUNNERS

ANTRIM
HAND-LOOMED CARPETS & RUGS

HIBERNIA
WOOLEN MILLS

Find these luxury
brands and more at



**Peninsula
Flooring Ltd.**

13 Henegan Road
Virgil Business Park

(905)-468-2135
www.peninsulaflooring.ca

Join Our Team



We're seeking passionate individuals who excel in a dynamic, innovative environment. If you take pride in your work, strive for excellence, and want to contribute to the community's success, join our dedicated team today! Help make Niagara-on-the-Lake the best place to live, work, play, and do business!



Scan the **QR Code** or visit www.notl.com/apply-job to learn more and explore job opportunities.



A MESSAGE FROM LORD MAYOR ZALEPA

On behalf of Town Council and Staff, I am pleased to present the Fall/Winter 2024-2025 edition of our Community Guide.

As the crisp air of fall and the beauty of winter envelop our community, we hope this community guide will be your go-to resource for all events and happenings in Niagara-on-the-Lake. This guide is designed to be your source for information on Town services, facilities, parks, recreational programs, arts, culture, and more. It will help you discover some of the great opportunities our Town has to offer. We encourage you to use this guide and stay informed of important dates and activities in the coming seasons.

Our Parks and Recreation Staff have been working to introduce new and exciting programming for residents of all ages for this fall and winter. To explore our offerings, please visit our website at www.notl.com/recreation-events/community-events-calendar.

To our new residents, we welcome you to the Town of Niagara-on-the-Lake, and invite you to collect your New Resident Welcome Package at Town Hall. This welcome package will provide you with some key information and resources that will help you settle into our community.

Thank you to all the community partners who continue advertising in our community guide. Your advertisement showcases our Town's wide range of services and products. We look forward to continuing our collaboration and seeing your business thrive.

As we transition into our fall and winter seasons, I wish everyone a time filled with memorable experiences. I encourage you to enjoy the cooler weather and explore our beautiful Town. Whether it's enjoying the vibrant fall foliage, engaging in winter sports, or attending seasonal events, there is so much to look forward to. I wish you a fantastic season ahead!

Sincerely,



Gary Zalepa Lord Mayor



GENERAL NOTICE

The Niagara-on-the-Lake Community Guide is published semi-annually. The next issue, Spring/Summer 2025, will be published in Spring 2025. If your group or organization is interested in submitting information for the upcoming guide or you would like to advertise your business, please email communications@notl.com or visit www.notl.com/community-guide for more information.

IN THIS GUIDE

PUBLIC SERVICES

7	Community Contacts & Information
7	Council
8	Closed Session
8	Strategic Plan
9	By-Law
9	Cemetery Services
10	Development & Planning
11	Donations
12	Economic Development
13	Fire & Emergency Services
15	Flooding Prevention
16	Garbage & Recycling
17	Health & Senior Services
18	Hydro
19	Libraries
21	Licences & Permits
23	Parking
24	Property Tax
26	Transit
26	Trees
26	Volunteer
26	Water & Wastewater
27	Winter Control

TOWN AMENITIES, FACILITIES & PARKS

28	Community Centre
28	Rental Spaces
29	Parks & Facilities
29	Facility Rentals
30	Community Collage
31	Arena Programming

RECREATIONAL ACTIVITIES & COMMUNITY PROGRAMS

32	Youth, Teen & Family Programming
33	NOTL Camps
34	Children & Youth
34	Minor Sports
35	Dance
35	Fitness
36	Music
37	Sports

COMMUNITY GROUPS & ASSOCIATIONS

38	Clubs & Committees
39	Local Interest Groups
40	Religious Activities

ARTS, HERITAGE & CULTURE

43	Art Programs
43	Historic Sites
44	Museums

Thank you to everyone who contributed to this guide!
For more information about its content, please visit the
Town's website at www.notl.com or call 905-468-3266.
Staff is always happy to help!

Niagara Regional Police Service - 905-688-4111

GOVERNMENT CONTACTS

MP Tony Baldinelli - 905-353-9590

MPP Wayne Gates - 905-357-0681

Niagara Region - 905-980-6000

Regional Councillor Andrea Kaiser - 905-658-8793

LOCAL MUNICIPAL CONTACTS

Humane Society of Greater Niagara - 905-682-0767

Niagara Lakeshore Cemetery - 905-468-2747

Niagara-on-the-Lake Community Centre - 905-468-4386

Niagara-on-the-Lake Hydro - 905-468-4235

Niagara-on-the-Lake Public Library - 905-468-2023

Queenston Public Library - 905-262-5173

Town Municipal Offices - 905-468-3266

OTHER COMMUNITY CONTACTS

Niagara-on-the-Lake Chamber of Commerce - 905-468-1950

Community Support Services - 905-682-3800

District School Board of Niagara - 905-641-1550

Friends of Fort George - 905-468-6621

Meals on Wheels - 905-356-9194

Newark Neighbours - 905-468-3519

Niagara Catholic District School Board - 905-735-0240

Niagara Historical Society & Museum - 905-468-3912

Niagara Nursery School - 905-468-4386

Niagara Parks Commission - 1-877-642-7275

NOTL Palliative Care Services - 905-468-4433

Parks Canada - 905-468-6614

Riverbrink Art Museum - 905-262-4510

Royal Canadian Legion Branch 124 - 905-468-2353

Shaw Festival Theatre - 905-468-2153

WASTE COLLECTION CONTACTS

Large Item Pick-up - 1-833-621-0726 (Miller Waste Systems)

Recycling Collection - 1-877-667-2626 (Circular Materials)

Waste Info Line - 905-356-4141 (Niagara Region)

TOWN COUNCIL 2022-2026

Town Council is here to help! There's no ward system in Niagara-on-the-Lake, so residents and community members are welcome to contact any Member of Council with questions, suggestions, or concerns. Council Members' contact information is listed on the Town's website at www.notl.com/council-government/mayor-council.



Back Row (Left to right): Councillor Gary Burroughs, Councillor Wendy Cheropita, Deputy Lord Mayor/Councillor Erwin Wiens, Councillor Tim Balasiuk, Councillor Nick Ruller, and Councillor Adriana Vizzari.

Front Row (Left to right): Councillor Sandra O'Connor, Lord Mayor Gary Zalepa, and Councillor Maria Mavridis.

WHAT IS A CLOSED SESSION?

You have most likely heard the term “closed session” used regarding Town Council. What exactly is a closed session?

In Ontario, Councils of a municipality can only convene in closed sessions (private meetings) for specific reasons outlined in Section 239 of the *Municipal Act*, 2001. These reasons typically include:

- Personal matters
- Litigation or potential litigation
- Advice subject to solicitor-client privilege
- Negotiations
- Matters that could reveal confidential information

The purpose of closed sessions is to allow Councils to discuss sensitive matters that require privacy and confidentiality while still ensuring transparency and accountability in the decision-making process. Council typically cannot vote within a closed session unless to direct Staff. Any motions discussed in a closed session are forwarded and voted on in an open session.

Deliberations within closed sessions must remain on-topic and cannot be shared outside the meeting. Closed sessions are only convened as allowed by the *Municipal Act*. For more about Council proceedings, please visit www.notl.com/council-government/mayor-council.



2022 - 2027

Strategic Plan

TOWN OF NIAGARA-ON-THE-LAKE



VIBRANT & COMPLETE COMMUNITY



GOOD GOVERNANCE



ENRICH COMMUNITY ASSETS,
ENVIRONMENT, & INFRASTRUCTURE



OPTIMIZE ORGANIZATIONAL
EXCELLENCE

Council's Strategic Plan is a roadmap for success, designed to guide decision-making and investments for this term of Council, ensuring decisions made today set the course for the community's desired future. Council's Strategic Plan acts as a guiding roadmap, defining measurable goals and priorities that will shape the future of Niagara-on-the-Lake.

Review Council's Strategic Plan at www.notl.com/council-government/mayor-council/strategic-plan.



View the Strategic Plan
on the Town's website by
scanning the QR code.



Track the progress of Council's 2022-2027 Strategic Plan using the Town's Strategic Plan Implementation Dashboard. Review key metrics and milestones of specific objectives and initiatives for quick insights. The dashboard is updated in June and December each year.

View the Strategic Plan Implementation Dashboard at notl.clearpointstrategy.com.



View the public
Dashboard by
scanning the QR code.



PUBLIC SERVICES

BY-LAW

Municipal By-laws are enforced to regulate many areas of the community, affecting health, safety and the enjoyment of property. The By-law Division's responsibilities are parking enforcement, short term rental licensing and enforcement, private tree protection, property standards, and many more listed on the Town's website. By-law Staff are committed to working with residents and the public to address concerns and make positive, continuous improvements that benefit the community.

To report a By-law concern, please submit an online Service Delivery Request form at www.notl.com/service-request-webform.

CEMETERY SERVICES

Lakeshore Cemetery – 1483 Lakeshore Road, Niagara-on-the-Lake

All administrative functions of the cemetery are managed onsite. This includes transactions such as lot purchases, headstones, markers, tree and bench dedications for the cemetery grounds, interments, cremation scatterings, and record and lot availability inquiries. Please make an appointment prior to your visit.

The Town has an online burial site and marker lookup tool, a mapping application designed to help users search for loved one's locations and burial plots within the Niagara Lakeshore Cemetery. Please visit www.notl.com to access the map. Should you have any questions, concerns, or require assistance, please contact David Voogt, Cemetery and Grounds Specialist, by email at david.voogt@notl.com or phone at 905-468-2747.

PUBLIC SERVICES



DEVELOPMENT & PLANNING

What is planning?

Land use planning in Niagara-on-the-Lake plays an important role in shaping the community. The purpose of land use planning is to manage land and resources to create a safe, healthy and inviting place to live, work and play. Some of the components that planning considers are:

- How residents can get to and from where they need to go;
- How residents can access their homes;
- Where people can gather with friends, neighbours and family; and,
- Where houses, businesses and parks should be located to make the Town accessible.

Who sets the rules?

In Ontario, the Province, Region and local municipalities work together. The Province sets the ground rules and directions for planning, through the *Planning Act* and the Provincial Policy Statement. These rules help protect the environment and make sure the Town is growing appropriately. In Niagara-on-the-Lake, area-specific provincial plans, including the Greenbelt Plan, Niagara Escarpment Plan, Growth Plan for the Greater Golden Horseshoe and the Niagara Official Plan, work together with the Provincial Policy Statement.

The Town is responsible for implementing the provincial and regional land use planning policy framework through the Town's Official Plan and Zoning By-law.

Through Council and/or the Committee of Adjustment, the Town is also responsible for making land use planning decisions to achieve the community's economic, social, and environmental objectives.

Municipal decisions on development applications must be consistent with the Provincial Policy Statement and conform to provincial plans, allowing for municipalities to be given some flexibility in deciding how to best achieve provincial policy direction.

How can citizens play a role?

Citizen input on development applications is an important part of the planning process. Town Staff encourage public comment on planning matters, and all comments received are considered in the review of development applications. Citizens can get involved with development applications in a few ways: through attending Open Houses to learn more about the proposal, speaking about a proposal during a Public Meeting or Committee of Adjustment Hearing, and/or providing written comments. Public notices, opportunities to provide input, and information on current development applications and appeals can be found on the Town's website at www.notl.com/business-development. For more information on Town planning matters and processes, please visit the Planning Services webpage at www.notl.com/business-development/planning-services.



Did You Know? | You can rent Town facilities for events. Learn more on page 29.

PUBLIC SERVICES



DONATIONS

Niagara-on-the-Lake is known for many wonderful things, and the generosity of its residents is certainly one of them! A big thank you to everyone who contributed to the various fundraising initiatives in 2024. The Town warmly welcomes continued donations for:

- Heritage Trail Improvements
- Inclusivity Initiatives
- New St. Davids Pool
- Tree Fund

Tax receipts are issued for donations above \$25. Donations can be made online at www.notl.com or in person at the Town Administration Building (1593 Four Mile Creek Road, Virgil) via cash, debit or cheque (payable to the Town of Niagara-on-the-Lake).

Thank you for making a positive impact the community!



PUBLIC SERVICES



ECONOMIC DEVELOPMENT



A MESSAGE FROM THE TOWN'S ECONOMIC DEVELOPMENT OFFICER

Local businesses are the backbone of our economy, bringing character to our community, creating jobs, and fueling innovation. As the new Economic Development Officer for the Town of Niagara-on-the-Lake, I am dedicated to fostering an environment where businesses can thrive and grow. By empowering local businesses, we create a more vibrant and diverse community that benefits everyone. The success of local businesses directly impacts the overall economic health of our Town.

Niagara-on-the-Lake offers a unique combination of rich heritage, agricultural beauty, an engaged and active community, and a robust tourism base, making it an ideal place for businesses to invest and flourish. Our strategic location, close to major transportation routes, combined with a supportive local government, provides a strong foundation for business success.

I am here to serve as a resource and partner to support our business community and reinforce the vital role that local businesses play in fostering economic growth and resilience. By working together to support our local businesses, we create a prosperous and dynamic local economy that benefits everyone in our community.

Ashleigh Myers
Economic Development Officer



ashleigh.myers@notl.com



905-468-3266



POPULATION

- **NOTL population:** 20,472*
- **Population growth:** 9%+ (versus 2020)
- **Five community hubs:** Glendale, Old Town, Queenston, St. Davids, Virgil



BUSINESS

- **Businesses in NOTL:** 1,025*
- **Population in the labour force:** 13,626*
- **Major economic drivers:** Agriculture and Tourism
- **Top sectors:**
 - Retail Trade: 13%
 - Accommodation and Food Services: 12%
 - Professional, Scientific and Technical Services: 7%
 - Manufacturing: 7%
 - Health Care and Social Assistance: 7%
 - Agriculture: 6%



TRANSPORTATION

- **Two major highways:** QEW and 405
- **One airport:** Niagara District Airport
- **International border crossing:** Queenston-Lewiston (USA)
- **One waterway:** Welland Canal



MORE FACTS

- NOTL sees over 2.5-million tourists annually
- Home to 50+ wineries, breweries, cideries, and distilleries
- 40% of Canada's grapes are grown in NOTL
- NOTL is the birthplace of icewine
- Home to Canada's largest open-air outlet mall
- First capital of Upper Canada
- NOTL has the most ghosts per capita
- Home to the oldest golf course in North America, Niagara-on-the-Lake Golf Club

*Statistic provided by Stats Canada.

PUBLIC SERVICES



FIRE & EMERGENCY SERVICES

NOTL FIRE & EMERGENCY SERVICES

The Niagara-on-the-Lake Fire & Emergency Services Department is a volunteer organization of 100 firefighters working together to provide efficient and high-quality emergency services. The Department is dedicated to prevention, education, and emergency response, aiming to be high-performing, progressive, and visionary in serving the community.



GREEN LIGHT AWARENESS



When the roads get cold and icy, incident rates can increase, making it very important to keep an eye out for the green light when driving in Niagara-on-the-Lake this fall and winter. When volunteer firefighters respond to an emergency, they first drive their personal vehicles to their respective fire stations before they can respond to the emergency in the fire trucks that we're all familiar with. A green light may appear in any type of vehicle at any time of the day or night. When you see a green light, please yield to the right and let the vehicle pass. The faster firefighters get to their stations, the faster they can get the fire trucks responding to the emergency scene. **Remember, when you see a green light, move to the right!**

ALARM ASSISTANCE PROGRAM

In November of 2023, the Niagara-on-the-Lake Fire and Emergency Services Community Risk Reduction (CRR) Division launched the Alarm Assistance Program (AAP). This free ongoing program is intended to assist Niagara-on-the-Lake homeowners aged 65 and over, and anyone with a disability or limited mobility, with smoke and carbon monoxide alarm safety in their homes. The CRR team encourages homeowners requiring assistance with their alarms to sign up for a visit. Residents can sign up online through the Town's website at www.notl.com/alarm-assistance-program, or by calling the Town at 905-468-3266.

SMOKE & CARBON MONOXIDE ALARMS EXPIRE

Many people are unaware that their smoke and carbon monoxide (CO) alarms expire, regardless of the model or type! Most smoke and smoke/CO combination alarms expire 10 years after the date of manufacture, while most stand-alone CO alarms expire 5-7 years after the date of manufacture, depending on the brand. The expiration date or the date of manufacture can be found on the back or side of most alarms. If you can't find the date and think the device is old, replace it! An expired alarm may not function properly and therefore fail to provide early warning of a fire or CO emergency. Check yours today; it could save your life!



@notlfiredpt



@NOTLfire



@NOTLfiredept

In Ontario, working smoke alarms are required by law on every level of your home, outside sleeping areas. Carbon monoxide alarms are required on every level of your home that has a bedroom or where someone sleeps, outside of sleeping areas. Have a look at the maintenance tips below to make sure your home is protected.

- # How can I tell how old my smoke/CO alarm is?

FURNACE SAFETY

- Schedule an annual cleaning and tune-up by a licensed technician before you turn your furnace on for the first time this year. Your furnace can emit carbon monoxide if it is not properly maintained.
- Change the air filter regularly as dust and debris can build up creating a fire hazard.
- Don't store anything combustible near your furnace to help avoid and contain furnace fires.
- Make sure that you have a working carbon monoxide detector in your home.



If you have a wood-burning fireplace in your home, be sure to have your chimney inspected annually and cleaned if necessary by a licensed technician. Be sure to have an easily accessible fire extinguisher stored nearby - a single spark can start a fire, so it's best to be prepared. If you have a gas fireplace in your home, be sure to have it inspected annually by a licensed technician. NEVER leave your wood-burning fireplace unattended, and be sure to switch off gas fireplaces when you are not in the room.

14

Significant rainfall can lead to extensive flooding, impacting municipal infrastructure, private residences, and public properties. Niagara-on-the-Lake residents may experience unexpected surges in water levels during heavy rainfall due to several factors, including blocked waterways, dry ground, changes to the natural drainage pathways, overflowing storm drains, etc.



PRE-RAINFALL PREPARATIONS

TOWN STAFF'S ACTION

- 1 Clear catch basins, inlets, and culverts.
- 2 Inspect storm ponds.
- 3 Conduct ditching operations to ensure effective water flow.

HERE IS HOW YOU CAN HELP

- 1 Regularly clear debris from catch basins, gutters, and downspouts.
- 2 Ensure that sump pumps are functioning correctly.
- 3 Have an emergency plan in place.



DURING EXTREME RAINFALL

TOWN STAFF'S ACTION

- 1 Check and clear problem areas.
- 2 Erect signage and close roads as necessary for public safety.
- 3 Monitor and assess areas while waiting for water levels to recede.

HERE IS HOW YOU CAN HELP

- 1 Ensure water is flowing away from your property.
- 2 Drive safely and avoid flooded areas.
- 3 Keep an eye on weather updates and advisories.



POST-STORM ACTIONS

TOWN STAFF'S ACTION

- 1 Repair roads and eroded shoulders, remove debris from ditches, catch basins and culverts as needed.
- 2 Communicate with residents who have submitted service requests related to flooding.

HERE IS HOW YOU CAN HELP

- 1 Clear debris to restore water flow.
- 2 Submit a service request to the Town to report issues or concerns regarding flooding and property drainage.



SUBMIT A SERVICE REQUEST

The Town encourages residents who experience flooding-related issues to submit an online service request. To submit a request, scan the QR code or visit www.notl.com/request-service-or-file-issue.

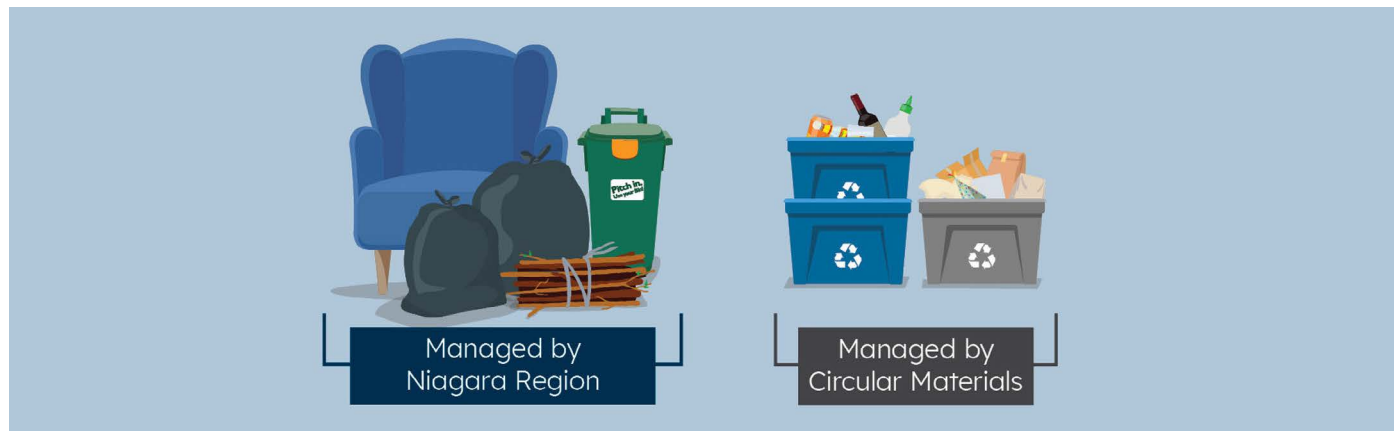


PUBLIC SERVICES



GARBAGE & RECYCLING

Effective January 1, 2024, Circular Materials took over the delivery of residential blue/grey box recycling collection service that was administered by Niagara Region.



Quick Facts:

- Curbside recycling collection services will remain unchanged until December 31, 2025, except for books, which will no longer be accepted. There will be no change to the collection day or frequency (weekly).
- Niagara Region will continue to manage residential curbside garbage collection, including large household items, organics (green bin), and leaf and yard waste.
- The new Blue Box regulation does not cover industrial, commercial, and some institutional (IC&I) establishments, so Niagara Region will continue providing blue and grey box recycling collection services until December 31, 2025.

Where can I buy/replace my blue/grey bins?

Residents can contact Miller Waste Systems, Niagara-on-the-Lake's new collection contractor, to order new blue/grey bins. Miller Waste Systems will deliver them directly to your home!

- For recycling information, please contact Miller Waste Systems: 1-833-621-0726 or area19@millerwaste.ca
- Residents can continue picking up green bins only at Town Hall (1593 Four Mile Creek Road, Virgil). Business owners who show a receipt of bins purchased from the Niagara Region can pick up Blue/Grey and green bins at Town Hall.

For more information, please visit the Niagara Region's website at www.niagararegion.ca/projects/blue-box-transition/default.aspx.

Collection Schedule App

Never forget your collection day again! Download the Niagara Region Waste app to get notifications to your phone for collection day reminders and service disruptions. Download the app at www.niagararegion.ca/waste.

**Scan the QR code to visit
the Niagara Region's webpage for
garbage, recycling and organics**

Did You Know? | You can report illegal dumping using the Niagara Region's online reporting tool at www.niagararegion.ca/waste.

PUBLIC SERVICES



HEALTH & SENIOR SERVICES

HAMILTON NIAGARA HALDIMAND BRANT LOCAL HEALTH INTEGRATION NETWORK (HNHBLHIN)

Contact: 1-800-810-0000 | www.hnhblhin.on.ca

HNHBLHIN is one of 14 networks across Ontario that plans, integrates and funds the local health care system, and is also responsible for the coordination and delivery of home and community care services and long-term care placement. If you need information about home and community care support or long-term care, the HNHBLHIN can help! HNHBLHIN is focused on creating an exceptional patient experience through the delivery of safe, high quality care and services for the people it serves. Contact them any time between 8:30 a.m. and 8:30 p.m., 7 days a week, 365 days a year.

NIAGARA-ON-THE-LAKE COMMUNITY PALLIATIVE CARE SERVICE

Contact: 905-468-4433 | notlpc@bellnet.ca | www.notlpc.com

Where: 1882 Niagara Stone Road, NOTL

Niagara-on-the-Lake Community Palliative Care Service provides seamless, equitable access to specialized community-based palliative care. Their service has Palliative Care volunteers available for companionship and caregiver relief, as well as professional Psychosocial Spiritual Counsellors available for end-of-life and bereavement support. They also provide peer-to-peer support for all clients. Their service includes mobility equipment lending, transportation and caregiver support. All services are free of charge.

NIAGARA REGION ADULT DAY PROGRAMS

Contact: 905-984-2621

When: Monday - Friday, 9:00 a.m. - 12:00 p.m. and 1:00 - 4:00 p.m.

Where: NOTL Community Centre, 14 Anderson Lane, NOTL

Cost: \$16.20 per half-day session

The Adult Day Program offers planned programming in three-hour sessions every weekday, helping older adults 60+ stay physically active, cognitively stimulated and socially connected. The program offers a safe atmosphere where seniors can socialize and engage in meaningful programming. Caregivers can benefit from valuable respite and peace of mind.

NIAGARA LONG TERM CARE RESIDENCE

Contact: 905-468-2111 ext. 210 | www.niagaraltc.ca

Where: 120 Wellington Street, NOTL

RADIANT CARE PLEASANT MANOR

Contact: 905-468-1111

www.radiantcare.net/live-here/pleasant-manor/

Where: 15 Elden Street, NOTL

UPPER CANADA LODGE

Contact: 905-468-4208 ext. 4460

Where: 272 Wellington Street, NOTL

MEALS ON WHEELS

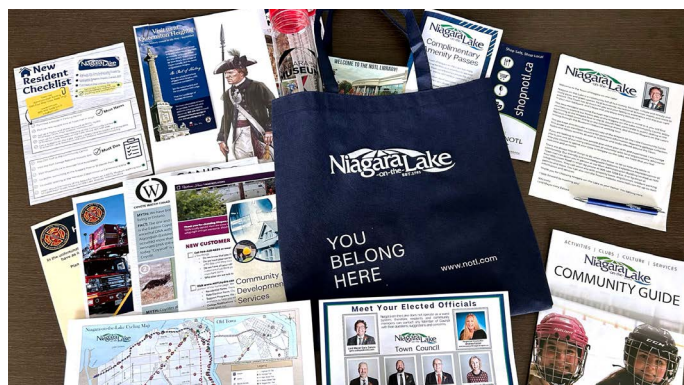
Contact: 905-356-7548 | mealsonwheels.nf@outlook.com

Meals on Wheels is a non profit, volunteer service providing home delivery of nutritious hot or frozen meals by a team of caring and committed individuals. Daily food services with delivery to Niagara-on-the-Lake.

NEW RESIDENT WELCOME PACKAGE

Niagara-on-the-Lake warmly welcomes new residents with a Town-branded tote bag containing valuable information, complimentary amenities, and more.

To receive your package, simply stop by the Town Administrative Building at 1593 Four Mile Creek Road in Virgil. We can't wait to meet you! For additional details, please visit www.notl.com/new-resident.



KNOW YOUR RATE OPTIONS

As a residential customer, you have 3 Regulated Price Plans (RPP) to choose from. The following is an overview of your RPP options as of Fall 2024. Rates may change on Nov 1.

TOU

TIME-OF-USE
87.2% of NOTL Accounts

Time-of-use (TOU) is the **default** price plan for residential accounts. There are three TOU price periods: On-peak, Mid-peak, and Off-peak. TOU price period times change twice a year in summer (May 1 to October 31) and in winter (November 1 to April 30).

The electricity you use from 7 p.m. to 7 a.m. every day, and all day on weekends and holidays, is the lowest TOU price all year round. With TOU pricing, you can help manage your electricity costs by shifting your usage to lower price periods when possible.

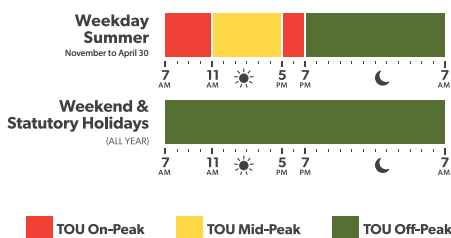
RATES

Effective Nov 1, 2023

On-Peak - 18.2¢ /kWh
Mid-Peak - 12.2¢ /kWh
Off-Peak - 8.7¢ /kWh

TIME PERIODS

(Starting Nov 1)



TIERED

TIERED RATES
11.9% of NOTL Accounts

Under Tiered Pricing, you can use a certain amount of electricity each month at a lower price. Once that limit (threshold) is exceeded, a higher price applies.

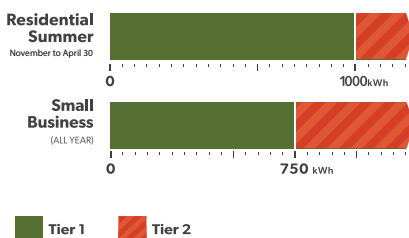
The monthly Tier threshold for residential customers changes twice a year: 600 kWh during the summer period (May 1 to October 31); 1,000 kWh during the winter period (November 1 to April 30).

If you typically use less than 600 kWh per month in the summer months, or less than 1,000 kWh in Winter months, then you might save the most on Tiered Price Plan. As a bonus, you won't need to adjust your habits such as doing laundry at night.

Tier 1 - 10.3¢ /kWh

Tier 2 - 12.5¢ /kWh

Tier 1 (Nov 1 to April 30 = first 1,000 kWh.
May 1 to Oct 31 = first 600 kWh)



ULO

ULTRA-LOW OVERNIGHT
0.2% of NOTL Accounts

With the Ultra-Low Overnight (ULO) price plan, there are four price periods: On-peak, Mid-peak, Weekend Off-peak, and Ultra-Low Overnight.

The Ultra-Low Overnight period is between 11:00 p.m. to 7:00 a.m. every day, when demand for electricity is lowest on average. There is a higher On-peak price for consumption between 4:00 p.m. to 9:00 p.m. on weekdays, when demand is usually higher.

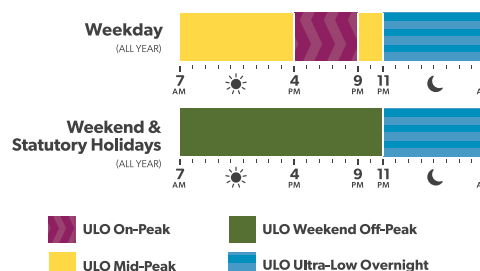
The ULO price periods are the same all year round. You can help manage your electricity costs by shifting high usage activities, like electric vehicle charging, to lower price periods when possible.

On-Peak - 28.6¢ /kWh

Mid-Peak - 12.2¢ /kWh

Weekend Off-Peak - 8.7¢ /kWh

Ultra-Low Overnight - 2.8¢ /kWh



HOW DO I CHANGE MY RATE?

Changing your rate is simple. Visit our website and complete an easy web form to make your switch. Paper forms are also available at our office at 8 Henegan Road (Virgil). If you think you'll save with Tiered in the winter and TOU in the summer, submit a change request. You can switch once per bill cycle.

PUBLIC SERVICES



LIBRARIES

QUEENSTON COMMUNITY LIBRARY

Contact: 905-262-5173

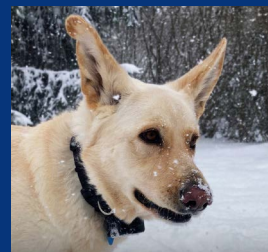
When: Tuesdays 1:00 - 4:00 p.m.

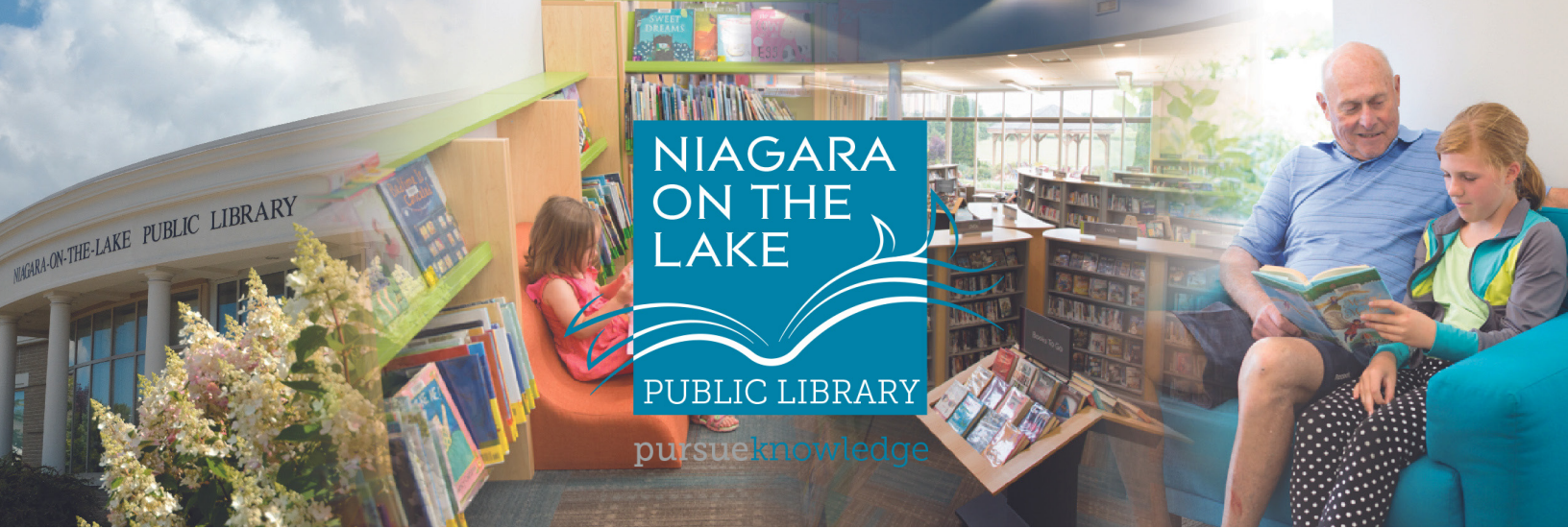
Where: 32 Queenston Street, Queenston

Visit the Queenston Library to browse through a collection of Canadiana, local history and the latest best sellers. The Queenston Library is a unique venue that can be rented for meetings and small informal gatherings. To inquire about reservations, please email bookings@notl.com.

Did You Know?

Niagara-on-the-Lake dog owners are required to register their dogs yearly for a dog license. Learn more on page 21.





Adult Programs

- Book Clubs
- Scrabble, Knitting & Quilting Groups
- Educational Workshops
- Cookbook Clubs
- Lecture Series
- Author Talks
- One on one tech tutoring



Children & Youth Programs

- Baby Programs - Giggle & Grow, Tumble Tots, Cuddle & Play
- TechniCOOL, Creation Station, Video Game Club
- Teen Book Club
- PA Day Activities



Library Services

- Free Computer & Wi-Fi access
- Study and Meeting Rooms
- Printing Services
- Hands-On Digital Literacy Workshops
- Cricut, 3D printing, digital media transfers, sticker & button maker.
- Programs at St. Davids Firestation



Lending

- Home delivery
- LiNC collection sharing
- Interlibrary Loan Service
- Virgil & St. Davids pick up locations
- Cricut Joy
- Educational Coding Toys



E- Resources

Access e-books, digital magazines, audiobooks, video streaming and more all with your NOTL Library card!



Visit our website for program info, hours, library card registration and more!



notlpubliclibrary.org

Call us at 905-468-2023

@notllibrary



PUBLIC SERVICES



LICENSES & PERMITS

BUILDING

The following construction activities require a building permit:

- Buildings greater than 10 metres squared
- Decks greater than 600 millimetres above grade
- Sheds greater than 15 metres squared
- Demolition of existing structures
- Additions to existing buildings
- Interior renovations involving structural and/or plumbing modifications
- Finished basements
- Damp-proofing basements
- Changing the use of a building (including secondary dwelling units)
- Replacing water, storm, or sanitary sewer lines

Our convenient online building permit application service is available through Cloudpermit at www.ca.cloudpermit.com/ login.

Please visit the Town's Building Services webpage early in your project planning to determine all applicable requirements at www.notl.com/town-services/building-services. For any further information, contact Building Services by email at building.division@notl.com or by phone at 905-468-3266.

DOGS

Niagara-on-the-Lake dog owners are required to register and vaccinate their dogs against rabies. Licenses are valid for a full 365 days after the date of purchase. Residents must obtain a current year's license within 14 days of acquiring or moving a dog into Niagara-on-the-Lake. Registration includes a unique license tag, which serves as an official license and offers the HomeSafe™ 24/7 lost pet service. Purchase pet licenses online at www.notl.docupet.com.

EVENTS

A Special Event is an event which may occupy all or part of Town owned property or may result in the disruption of the local flow of traffic. A special event may be defined as, but not limited to, a parade, festival, filming, race, procession, and/or any other activity that may include the following component(s):

- Street closure(s)
- Fireworks or pyrotechnics
- Live entertainment
- Temporary structures/tents
- Service of food or alcohol
- Large volumes of vehicular or pedestrian traffic



Photo by Cindy Baisley

In order to hold a Special Event within the Town, please complete and submit a Special Event Application Form found at www.notl.com/recreation-events/special-events. For more information on events, please email specialevents@notl.com or call 905-468-3266.

GAMING

The Alcohol Gaming Commission of Ontario (AGCO) is responsible for regulating and overseeing licensed lottery events (such as bingo, raffles and the sale of break-open tickets) conducted by eligible charitable and religious organizations to raise funds to support charitable purposes. As part of the AGCO's regulatory responsibilities in the charitable sector, the AGCO administers, in partnership with municipalities, the regulatory framework governing the issuance of charitable lottery licenses. For more information, please visit www.notl.com, www.agco.on.ca or call 905-468-3266.

PUBLIC SERVICES

HERITAGE

A Heritage Permit is required when the owner of a designated property wants to alter the exterior of a building designated under Part V or the designated portions of a building designated under Part IV of the *Ontario Heritage Act*. For more information regarding the Town's heritage resources, contact the Town's Heritage Planner at heritage@notl.com or visit

www.notl.com/heritage-planning.

SHORT TERM RENTAL

In the Town of Niagara-on-the-Lake, a license is required to operate a Short Term Rental such as a Bed & Breakfast, Cottage Rental, Country Inn, Villa or Vacation Apartment. A renewal application must be submitted every four years to maintain an active license, which includes a re-inspection of the Short Term Rental. This ensures that the Short Term Rental continues to meet the safety standards set forth by the Ontario Fire Code and the Town of Niagara-on-the-Lake By-laws.

The Town's By-Law Officers work in partnership with the Short Term Rental Compliance Program, Granicus, to provide support to the community. Residents can use the online reporting system to submit concerns regarding Short Term Rentals at www.notl.com/short-term-rentals. They can also contact Granicus and speak to a Host Compliance Operator, available 24 hours a day, seven days a week, by calling 289-210-7226.

Please visit the Town's website at www.notl.com/short-term-rentals for further information.

PLANNING TO DIG?

Building a fence, putting in a pool, planting a tree, or any other small digging project? Request a locate from Ontario One Call if you plan to dig in your yard. It is important to contact Ontario One Call so you can dig safely. Please visit www.ontarioonecall.ca or call 1-800-400-2255 before you dig.

DESIGN BUILD MAINTAIN

Dedicated to growing a greener future in the Niagara Region since 1976.



www.dawland.ca | info@dawland.ca

PUBLIC SERVICES

PARKING

PARKING IN NIAGARA-ON-THE-LAKE

The Town offers convenient parking payment options for residents and visitors. You can pay online through HONK Mobile or Parkedin, or use one of our payment machines located in the Heritage District on Queen Street and the side streets of Old Town.

PAY FOR PARKING



PAY AT A MACHINE

Visit the nearest parking machine to pay for parking using coin, cash or debit.



PAY ONLINE

Pay using the HonkMobile or ParkedIn app.



Pay using the
HonkMobile App.



Pay using the
ParkedIn App.



ONLINE PARKING PAYMENT FAQ

How do I print a payment slip to be placed on my dashboard?

You won't need a payment slip! Our online system makes everything convenient. Town Parking Enforcement Officers have a real-time list of license plates from those who have paid using the mobile app. It's as easy as that!

Will I be notified if my session is about to expire?

The mobile apps will send a text message 15 minutes before parking is about to expire. Users can easily extend a session directly from their phones.

RESIDENT PARKING PERMITS

Resident Parking Permits are available exclusively to residents of Niagara-on-the-Lake. Permit holders can park in any metered parking space or lot in the Heritage District for up to three hours. It's perfect for visiting Old Town to go shopping, dining, or seeing a show! The permits cost \$30.00 and can be purchased online at www.notl.com or by visiting the Town of Niagara-on-the-Lake Administration Building at 1593 Four Mile Creek Road in Virgil. Valid identification is required as proof of address to obtain a permit. Permits are valid for the vehicle identified by license plate number and are non-transferable. They are valid from January 1 to December 31 of each calendar year.

Already own a current Resident Parking Permit? Beginning in October, you can renew it online or in person for next year!

ACCESSIBLE PARKING

Accessible parking spaces are located throughout the Town on the street and in municipal parking lots. All vehicles parking in an accessible zone must display a valid Accessible Parking Permit on their dashboard and are not required to pay for parking. The fine for parking in an accessible space without a valid permit displayed is \$400.00.

PARKING REMINDERS

- Please do not block driveways or sidewalks.
- Pay close attention to posted signs limiting or restricting parking.
- Parking your vehicle within 10 metres of an intersection or 3 meters of a fire hydrant is not allowed.
- You may not park in one spot for longer than 12 hours at one time.
- Always park your vehicle in the same direction as the traffic flow.



Scan the QR code for more information about parking in Niagara-on-the-Lake.
www.notl.com/town-services/parking.

Where do my Property Taxes Go?

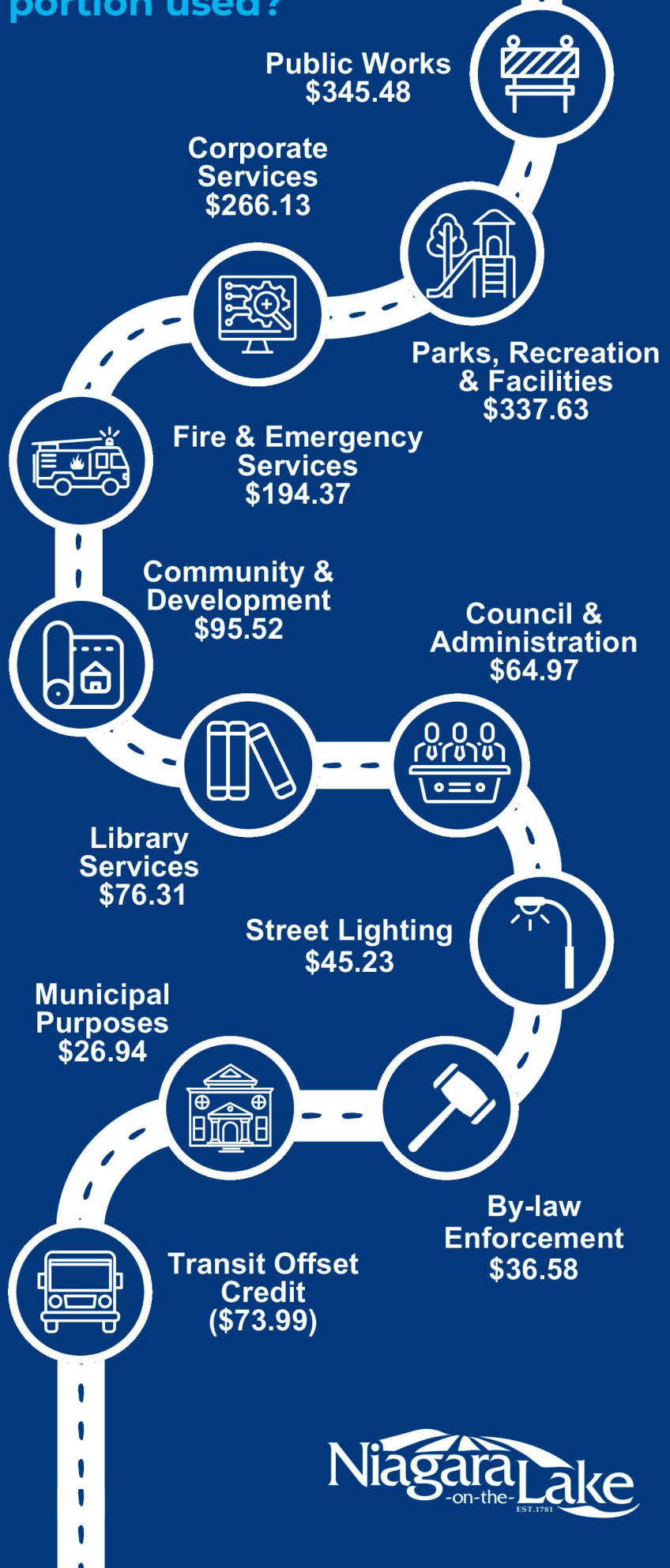


- Regional Levy 56.1%
- NOTL Levy 21.9%
- Education Levy 12.9%
- Transit 3.8%
- Regional Waste 3.3%
- Storm Levy 1.9%
- Niagara Health System Services 0.1%

Average Residential Property

\$544,000
assessment value
=
\$6,463.63
in taxes annually

How is the Town's portion used?



BUDAPEST BAKESHOP

A Bakery Experience Like No Other!



We did not invent the Chimney Cake. Its origins go back more than 300 years in Hungary. What we did do, though, is take it to another level of deliciousness!

Every single Chimney Cake is prepared, hand-rolled and baked from scratch every day and throughout the day. When you enter Niagara-on-the-Lake and turn down Queen Street, just follow the smell of freshly baked goodness and you'll find us!

When you walk into our bakeshop, you get to see first-hand the entire process right before your eyes — the mixing, the rolling, the rising, the baking, the toppings and fillings!

It's time you tasted our cakes, that aren't really cakes at all!



www.budapestbakeshop.com
[@budapestbakeshop](https://www.instagram.com/budapestbakeshop)



118 Queen St.
Niagara-on-the-Lake, ON
L0S 1J0



905-468-7778

PUBLIC SERVICES



TRANSIT

Niagara Region Transit offers OnDemand transit and specialized transit to Niagara-on-the-Lake residents, businesses and visitors. OnDemand transit is a ridesharing service that lets riders request trips in real-time through a mobile app or over the phone by selecting a pickup point and destination.

Niagara Region Transit can transport riders in Niagara-on-the-Lake to:

- A different location within Niagara-on-the-Lake
- A designated service area located across Niagara
- A designated transit hub located in Port Colborne, St. Catharines or Welland

Plan your trip, pay online and book a ride using the NRT OnDemand mobile app.



Visit the Niagara Region Transit website at www.nrtransit.ca for more information or call 1-833-678-5463.



TREES

PRIVATE TREE REMOVAL

If you live in one of the five urban areas of Niagara-on-the-Lake and are planning to remove a tree from your property, a permit may be required. Property owners are required to apply for a Tree Removal Permit before removing any tree with a trunk measuring 12.5 cm or larger in diameter. Information regarding the requirements and the permit process can be found on the Town's website or by contacting the By-law Enforcement Officer – Urban Forestry at 905-468-3266. The private tree removal application form can be completed and submitted online at www.notl.com/form/private-tree-removal-application.

TREE FUND

The Niagara-on-the-Lake Tree Fund has been established to assist with greening the community. This fund, administered by the Town, provides an opportunity for individuals to donate towards the planting of trees. Please see the Town's website at www.notl.com/trees for details or call 905-468-3266.



VOLUNTEER

VOLUNTEER TALENT BANK

Interested in volunteering or looking for volunteers? Look no further! The Town has an online Volunteer Talent Bank available at www.notl.com/recreation-events/volunteer-talent-bank.



WATER & WASTEWATER

The Town of Niagara-on-the-Lake owns and operates two separate drinking water distribution systems which are the Niagara-on-the-Lake drinking water system (Niagara-on-the-Lake DWS) and the Bevan Heights drinking water system (Bevan Heights DWS). The Town maintains responsibility for water distribution only; the facilities for water treatment and storage are owned and managed by the Niagara Region. The two drinking water systems distribute treated drinking water within a service area of approximately 12,600 hectares. The service area is bounded by Lake Ontario, the Niagara River, the City of Niagara Falls and the City of St. Catharines.

SAMPLE STATIONS

Are you curious what those green objects are that stand alone and look like green parking meters? They are water sample stations! These stations allow the Town to test the quality of the water we drink, as they provide a direct line to the watermain. These stations enhance the Town's ability to test a wider area of the Town's water supply. With 15 stations already within the system, the Town can help ensure the water residents are drinking meets and exceeds Ministry Legislation where possible. The water system that the Town has is one of the best in the country and with the wider array of testing, Staff can stay on top of any issues that may arise.

WINTER CONTROL



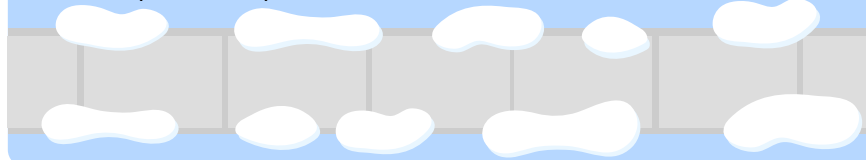
Did you know?

Municipal roads in Niagara-on-the-Lake make up a total of **255.95 kilometres**. Just two passes with the snow plow is the equivalent of driving from Niagara-on-the-Lake to Sudbury!



Sidewalks

The Town of Niagara-on-the-Lake is responsible for clearing snow from a total of **78.16 kilometres** of municipal sidewalks. Sidewalks are plowed after the storm has subsided, roads have been plowed, and a minimum of 75 mm (3 inches) of snow has fallen at one time.



Parking

Please refrain from parking on the street before, during or after a winter storm event to allow for proper plow truck operations. Parking tickets may be issued to vehicles in contravention of By-law 4308-09.



It's important to watch out for our slow plows when their lights are flashing and they are spreading out materials.

Did you know?

"Why not keep the plow down at all times?" If you see a snow plow with its plow up on a road that hasn't been cleared, remember each truck is assigned to a specific route. The truck may be traveling to the beginning of a route to begin a sanding operation that is completed before plowing.

Keep Track!

Check out our online **Plow Tracker** to stay up-to-date on winter control initiatives in Niagara-on-the-Lake. View the Plow Tracker online at www.notl.com.



Snow Placement

Kindly pile all snow from your driveway and walkways on your property, not the road. When clearing your driveway, pile snow on the right side if you are facing the street. This will help reduce the snow pushed back into your driveway by a snow plow.



Reminder:

In an **emergency** situation, you should always **call 911** to access emergency services. If there is a winter control issue affecting your emergency situation, such as snow blocking road access for emergency vehicles, emergency services will contact the Town directly to resolve the issue.

TOWN AMENITIES, FACILITIES & PARKS



COMMUNITY CENTRE



The Niagara-on-the-Lake Community Centre 14 Anderson Lane, Niagara-on-the-Lake

Open Daily

Weekdays from 6:00 a.m. to 9:00 p.m.

Weekends from 9:00 a.m. to 4:00 p.m.

(Please visit www.notl.com for holiday closures.)



Check out the Community Events Calendar on the Town's website for Community Centre programs, Town events, and more.



RENTAL SPACES

The **Simpson Room** is 1560 square feet with a kitchenette, perfect for all types of social gatherings such as bridal or baby showers and parties up to 80 guests.



Book the **Mori Room** for your next event. The room features a kitchenette and lots of natural light. The space is 1015 square feet and has a maximum capacity of 60 people.



Rent the **Studio Room** to teach your fitness, dance, or karate classes. This 950 square foot multipurpose room has mirrors and a built-in sound system.



Host your next meeting in the **Martin Sheppard Fraser Board Room**. This professional space seats up to 12 people comfortably with Wi-Fi and AV services available.



The Niagara-on-the-Lake Community Centre's spacious auditorium is perfect for holding your upcoming special event. This large hall is 4500 square feet and can be divided into three sections. The space includes a stage and other convenient amenities such as a kitchen, bar, built-in sound system and two stationary LCD projectors. This venue can hold 450 guests with assembly seating or 300 guests seated at tables. This is the perfect space for any event, from wedding receptions, seminars, fitness classes, parties, stag and does and more!

All inquiries can be made by phone by calling 905-468-4386 or emailing bookings@notl.com.

TOWN AMENITIES, FACILITIES & PARKS



PARKS & FACILITIES

The Town of Niagara-on-the-Lake's green spaces and outdoor play areas are easily accessible and meticulously maintained. These beautiful parks are available to the public free of charge and are a great source of pride within the community.

Scan the QR code to view the Town's interactive online Park Locator Map for park locations and amenity information.



FACILITY RENTALS

Are you planning a wedding, event, or corporate function in our picturesque Town? Look no further – we've got you covered! You can also explore hosting your outdoor event in the natural beauty of our numerous municipal parks or arranging your sports tournament on our well-maintained sports fields. Our dedicated Town Staff take great pride in upholding high standards of excellence when it comes to the maintenance of our parks, fields, and facilities. Your special occasion will be in great hands!

ARENA ADVERTISING AND ROOM RENTALS

The Meridian Credit Union and Centennial Arenas have advertising space available. Arena advertising is a highly effective way to market your company and build brand awareness. The Mary Snider Room and board rooms at the arena are also available to rent all year round.



DISC GOLF COURSE

The Town of Niagara-on-the-Lake Community Centre (14 Anderson Lane, NOTL) is home to a nine hole ACEPLACE disc golf course. It is a great place for veteran players to practice their short game or for new players to try disc golf and have some fun! The course hours are 7:00 a.m. to 10:00 p.m. and the game is free to play. Discs are available for free at the Community Centre front desk and the Niagara-on-the-Lake Public Library during business hours.

FITNESS CENTRE

Support your well-being at the local fitness centre, where you can enjoy an indoor walking/running track and workout stations to meet your fitness goals. It's more than a gym, it's the first step toward a healthier you! For more information and to purchase a gym membership, please visit www.notl.com/community-centre.

GAZEBO

The gazebo at Queens Royal Park (45 Front Street, NOTL) can hold up to 12 people and be reserved for engagements and small weddings.

PAVILIONS

Enjoy your next family gathering picnicking outdoors by renting one of the pavilions at the Virgil Sports Park or Memorial Park.



Call 905-468-4386, email bookings@notl.com or scan the QR Code to learn more about facility rentals.





COMMUNITY COLLAGE



Photo submitted by: Kathryn Pyper



Photo submitted by: Diego Ivan Jofre



Photo submitted by: Amber O.



Photo submitted by: Kathryn Pyper

Submit your Photos of NOTL

The Town is always looking for great photo and video content to use on our social media channels. You can submit your photos of NOTL by using our online photo submission form at www.notl.com/photos. Also, don't forget to tag the Town in all your NOTL related posts. We love to see the community through your lens!

ARENA PROGRAMMING SCHEDULE

	SUN	MON	TUE	WED	THU	FRI	SAT
9 am		Adult Skate 9:00 - 10:00 a.m.		Adult Skate 9:00 - 10:00 a.m.		Adult Skate 9:00 - 10:00 a.m.	
10 am							
11 am		Parent & Preschool 10:00 - 11:30 a.m.		Parent & Preschool 10:00 - 11:30 a.m.	Stick & Puck Adult 10:00 - 11:30 a.m. Stick & Puck Youth 10:00 - 11:30 a.m.	Parent & Preschool 10:00 - 11:30 a.m.	
12 pm							
1 pm		Shinny 12:00 - 1:00 p.m.	Shinny 12:00 - 1:00 p.m.	Shinny 12:00 - 1:00 p.m.	Shinny 12:00 - 1:00 p.m.	Shinny 12:00 - 1:00 p.m.	
2 pm	Public Skate 1:30 - 3:00 p.m.		Parent & Preschool 1:30 - 3:00 p.m.		Parent & Preschool 1:00 - 2:30 p.m.		Public Skate 1:30 - 3:00 p.m.
3 pm							

 **MERIDIAN CREDIT UNION ARENA**  **CENTENNIAL ARENA**

Public skating is set to begin on Thanksgiving Weekend, October 12, 2024.

HOLIDAY PUBLIC SKATING DATES

Meridian Credit Union Arena:

December 23: 1:30 - 3:00 p.m.
December 24: 1:30 - 3:00 p.m.
December 26: 1:30 - 3:00 p.m.
December 27: 1:30 - 3:00 p.m.
December 30: 1:30 - 3:00 p.m.
December 31: 1:30 - 3:00 p.m.
January 2: 1:30 - 3:00 p.m.

Centennial Arena:

January 3: 1:30 - 3:00 p.m.







RECREATIONAL ACTIVITIES & COMMUNITY PROGRAMS



YOUTH, TEEN & FAMILY PROGRAMMING

DROP-IN RECREATION

When: Thursdays 4:30 - 7:30 p.m.

Where: Auditorium, NOTL Community Centre

The Town's Drop-in Recreation is a paid, unstructured drop-in initiative designed to engage children, youth and young adults in active play. Town Program Staff will be present to facilitate a variety of sports activities to drop-in participants! Participants ages 6-18 can play activities like badminton, pickleball, table tennis, soccer, modified basketball. Activity options will rotate weekly. Participants ages 2-6 will have a separate activity space with soft play toys, balance bikes, and age-appropriate facilitated games. Participants under six years old must be accompanied and supervised by a caregiver (14 years of age or older) at all times.

GROWING ARTS

When: Tuesday Evenings

Session 1 (ages 6 - 8): 5:00 - 5:45 p.m.

Session 2 (ages 9 - 14): 6:00 - 7:30 p.m.

Where: Penner Room, NOTL Community Centre

Join Growing Arts, an exciting art class for children and youth ages 6-14! In this program, participants will explore various artistic mediums, including painting, drawing, and sculpture. Each week, young artists will be encouraged to express their creativity, collaborate, and grow their skills. The program's experienced instructor, Stewart Fanning, will guide them through educational lessons and engaging projects, helping them build confidence in their artistic abilities.



When:

Parent & Child: Wednesdays 4:45 - 5:30 p.m.

Junior: Wednesdays 5:30 - 6:30 p.m.

Where: Auditorium, NOTL Community Centre

Sportball provides non-competitive sports instruction for children 16 months to 10 years. It helps kids develop physical literacy and a life-long love of movement and sport by placing emphasis on competence and confidence building, socialization and fun over winning.

MINI & MIGHTY MOVERS

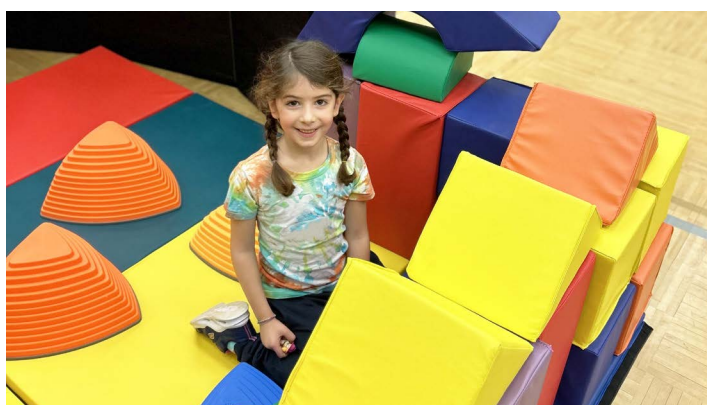
When: Saturday Mornings

Mini Movers (ages 2 - 3): 9:30 - 10:15 a.m.

Mighty Movers (ages 4 - 7): 10:15 - 11:00 a.m.

Where: Auditorium, NOTL Community Centre

The Movers programs are geared toward children ages 2-7 and offer an inclusive, fun, and safe environment for children to enhance gross-motor skills and sensory organizational skills by walking, running, climbing, jumping, and exploring equipment. The open room setting allows for interaction with other children with opportunities for structured, and unstructured play. Each program consists of 30 minutes of instructor lead games and activities, followed by 15 minutes of unstructured play and exploration.



FALL 2024

When: September 29 – December 14, 2024

- Programs Viewable Online: Wednesday, August 21
- Resident Registration: Monday, August 26
- Non-Resident Registration: Wednesday, August 28

WINTER 2025

When: January 5 – March 8, 2025

- Programs Viewable Online: Monday, November 18
- Resident Registration: Monday, December 2
- Non-Resident Registration: Wednesday, December 4

Email programs@notl.com
or scan the QR Code to learn
more about Town programs
or to register online.



NOTL CAMPS

Looking for something fun for your children to do on PA days, winter break and March break? Look no further! Our Day Camps in the Town of Niagara-on-the-Lake offer exciting activities and learning opportunities to keep your children engaged and entertained. Discover the perfect blend of adventure and education for your child. See below for more details.

WINTER CAMP

When:

Friday, December 27
Monday, December 30
Tuesday, December 31
Thursday, January 2
Friday, January 3

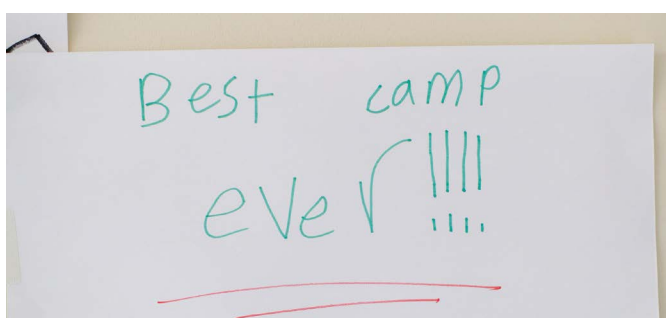
Where: Centennial Arena, 1565 Four Mile Creek Road, Virgil

MARCH BREAK CAMP

When:

Monday, March 10
Tuesday, March 11
Wednesday, March 12
Thursday, March 13
Friday, March 14

Where: Centennial Arena, 1565 Four Mile Creek Road, Virgil



Email programs@notl.com
or scan the QR Code to learn
more about NOTL camps
and register online.



PA DAY CAMPS AND PROGRAMMING

The Town offers a number of programming options for Public and Catholic school PA Days. Join us for PA Day Camp and Public Skating at the Centennial Arena (1565 Four Mile Creek Road, Virgil) and St. John Ambulance's Home Alone and Babysitting Basics courses at the NOTL Community Centre (14 Anderson Lane, NOTL).

PA DAY	DAY CAMP	ST. JOHN AMBULANCE COURSES	PUBLIC SKATE
October 11	Centennial Arena	Community Centre	Centennial Arena
November 29	Centennial Arena	Community Centre	Centennial Arena
January 17	Centennial Arena	Community Centre	Centennial Arena
February 14	Centennial Arena	Community Centre	Centennial Arena
April 4	Centennial Arena	Community Centre	N/A
June 6	Centennial Arena	Community Centre	N/A

Visit www.notl.com/day-camps or call 905-468-4386 to learn more.

RECREATIONAL ACTIVITIES & COMMUNITY PROGRAMS



CHILDREN & YOUTH

EARLYON CHILD AND FAMILY CENTRE

Contact: Donna Dalglish | 905-329-5093

donna.dalglish@ncdsb.com

When: Tuesdays and Fridays 8:30 - 11:45 a.m.

Where: St. Michael Catholic Elementary School, 387 Line 3 Road, NOTL

Play, learn and connect at your local EarlyON Centre. Enjoy FREE, high-quality drop-in programs for children from birth to six years of age, their parents and caregivers. Everyone is welcome!

JUNIOR TENNIS

Contact: gotennis@niagaratennisclub.com

niagaratennisclub.com

Where: Memorial Park, 370 King Street, NOTL

When: Weekly sessions (May - August)

Together we will play! Join us for JUNIOR TENNIS next season. 2025 registration opens on March 1. The NOTL Go Tennis Team brings over 40 years of coaching experience, passion for teaching and understanding of the fun factor in learning. We follow the Tennis Canada Tennis Pathway Program with a variety of groups to provide players with the best opportunity to learn quickly. Our primary play day is Wednesday afternoon, 4:00 and 5:00 p.m. The program is directed by Shawna Mcfarlane with Charlotte Petrick as the lead professional.



NOTL YOUTH COLLECTIVE

Contact: NOTL Youth Planning Committee

info@notlyouth.com | notlyouth.com

When: Fall Session (October 16 - December 4)

Cost: Free or minimal fees (Pre-registration required)

NOTL Youth Collective is a volunteer group of parents and other community stakeholders who are committed to providing a safe, fun place for our youth to gather, make connections, develop skills, and be inspired. Please visit www.notlyouth.com and follow us on Facebook to learn more about the programs and how to get involved.



MINOR SPORTS

NOTL MINOR HOCKEY ASSOCIATION

Contact: notlhockeyregistrar@gmail.com

For information about Niagara-on-the-Lake Minor Hockey, please visit www.notlhockey.com.



ROYAL LEPAGE
NRC Realty, Brokerage
Independently owned and operated

125 Queen St,
Niagara-On-The-Lake,
ON L0S 1J0

(905) 468-4214



RECREATIONAL ACTIVITIES & COMMUNITY PROGRAMS



DANCE

ADULT BALLET

Contact: Jena Slingerland | 905-401-0711

trainingbyjena@gmail.com

When: Wednesdays 3:00 p.m.

Where: Studio Room, NOTL Community Centre

Cost: \$15.00 per drop-in class, \$135.00 for 10 classes or \$99.00 for 8 week session (HST not included)

Adult Ballet is a beginner / intermediate level class suitable for someone new to the form or who has danced in the past. The class has a traditional ballet class structure with barre, then centre work. Ballet slippers are recommended.

CLASSIC LINE DANCING

Contact: Janice Barker | 905-468-4494

jbarker23@cogeco.ca

When: Mondays 10:00 - 11:30 a.m.

Where: Simpson Room, NOTL Community Centre

Dance to waltz, tango, folk, country, etc. You will learn many line dance step patterns. If you love dancing, join us for some fun, exercise and socializing. There is NO charge and no partner is needed. The room opens at 9:30 a.m. for set-up.

THE NIA TECHNIQUE

Contact: Didi Wilson | 289-228-5293

dididances1111@gmail.com

When: Thursday mornings 10:00 a.m. (Starting October 17)

Where: Studio Room, NOTL Community Centre

Cost: \$20.00 per drop-in class

Nia is spirited movement for body and soul, fusion fitness that promotes better balance, and mobility. Come dance with our welcoming group to modern and world music. Feel the joy and have FUN! (Non-impact, all bodies welcome)



FITNESS

AUTUMN LEAF TAIJI

Contact: Yimlei Molly Yep | 289-501-5666

autumnleaf.taiji@gmail.com

When: Taiji Flow | Mondays 9:00 - 10:00 a.m.

Taiji Flow Plus | Thursdays 9:00 - 9:45 a.m.

Taiji Forms | Thursdays 9:45 - 10:30 a.m.

Where: Auditorium, NOTL Community Centre

Cost: Monday (60-Minutes): \$8.00, Thursday (45-Minutes) \$5.00

Beginners Taiji-Flow: Just go with the flow by mirroring the instructor who varies whole body movements to music.

Taiji-Flow Plus: Learn the popular 24 Form.

Taiji Forms: Learn the 32 Sword Form.

BARRE FIT

Contact: Jena Slingerland | 905-401-0711

trainingbyjena@gmail.com

When: Wednesdays 2:00 p.m.

Where: Studio Room, NOTL Community Centre

Cost: \$15.00 per drop-in class, \$135.00 for 10 classes or \$99.00 for 8 week session (HST not included)

Barre Fit is a fitness class inspired by ballet technique.

The class focuses on total body strength, mobility and endurance using body weight and bands. This medium-impact class is suitable for all ages fitness levels. Please bring a yoga mat.

BOOGIE NIGHTS!

Contact: Emma Barker

info@everybodyneedstoboogie.com

When: Wednesdays 6:00 - 7:00 p.m. and 7:30 - 8:30 p.m.

Where: Studio Room, NOTL Community Centre

Cost: \$15.00 per drop-in class, \$110.00 for 8 classes

Boogie Nights! is a fabulous way to get fit, have fun and just BOOGIE! There is a new theme each week; this applies to the music and style of dance. Join our All Levels class, suitable for everybody or, the 'Low Impact' specifically for older adults!

THERAPEUTIC CHAIR YOGA

Contact: Elizabeth Spence | 289-259-4209

espence@live.ca

When: Wednesdays and Fridays 12:30 - 1:30 p.m.

Where: Studio Room, NOTL Community Centre

Cost: \$14.00 per class or \$60.00 per five classes

Through the practice of gentle stretches and breathing, we explore natural movements in the body.

RECREATIONAL ACTIVITIES & COMMUNITY PROGRAMS

REACTIVATED COACHING & TRAINING SYSTEM

Contact: Jenny Brown | 905-988-8852
jbreactivated@gmail.com | www.reactivated.ca
When: Tuesdays and Thursdays 9:00 a.m. - 4:00 p.m.
Where: Fitness Centre, NOTL Community Centre
Custom fitness training which may include a functional assessment to reveal your needs. Posture, goals, sports background, lifestyle, and wellness level are considered for your program. Learn to train with purpose and passion to become REACTIVATED!

WHITE WING TAI CHI

Contact: Sue Baxter | 905-228-1718
susan.baxter@me.com
When: Wednesdays and Fridays 10:00 - 11:30 a.m.
Where: Simpson Room, NOTL Community Centre
Tai Chi is a gentle form of exercise and helps in balance and concentration.

YOGA WITH ANDS

Contact: Andrea van Niekerk | 647-968-8585
andrea@justmyscene.com
When: Tuesdays 9:00 a.m., Thursdays 9:30 a.m. and 5:45 p.m. and Saturdays 9:30 a.m.
Where: Studio Room, NOTL Community Centre
Cost: \$15.00 per session
Join my hatha yoga classes that focus on your foundation and ensure you move safely to build your core and increase your balance and stability. We are a fun bunch; you are most welcome! Beginners welcome.



MUSIC

EVERGREEN SINGERS

Contact: Glyn Clarkson | 905-934-0417
evergreensingersnotl@gmail.com
When: Mondays 1:30 - 3:00 p.m.
Where: Grace United Church, 222 Victoria Street, NOTL
Cost: \$125.00 annual fee
Together for over 20 years, we meet to enjoy singing a variety of music - show tunes, pop songs and classics. There is no audition. Ability to read music is not required.

QUEENSTON WOMEN'S CHORUS

Contact: Lisa Brillon | 905-401-4088
queenstonwomenschorus@gmail.com
When: September – April, Tuesday 7:30 – 9:00 p.m.
Where: St. Davids-Queenston United Church, 1453 York Road, St. Davids
The Queenston Women's Chorus is a choir for women who love to sing! All our net proceeds from our concerts go to local community organizations. If interested, please visit www.queenstonwomenschorus.ca.

RECREATIONAL ACTIVITIES & COMMUNITY PROGRAMS

SPORTS

NIAGARA SHORT MAT CLUB

Contact: membership@notlbowls.ca | notlbowls.ca

When: Mondays and Thursdays 1:00 - 4:00 p.m.

Where: Auditorium, NOTL Community Centre

Cost: \$90.00 for the season, \$3.00 for one game, \$5.00 for two games

From mid-October to early April, we bowl indoors on carpets using lawn bowls. Bowls are available for rental. We have a social gathering at the end of each month. For more information, please visit www.notlbowls.ca.

NOTL SKATING CLUB

Contact: skatenotl@outlook.com | notl skatingclub.com

When: Daily September to March

Where: Meridian Credit Union and Centennial Arenas

Cost: Please visit the website for session information and costs.

The Niagara-on-the-Lake Skating Club offers Skate Canada programs with the focus on fun, fitness and achievement. Our Pre CanSkate and CanSkate programs are administered by two-time Skate Canada National award-winning Professional Coach Judi Boyle-Krzeczkowski.

Instructors are NCCP certified professional coaches assisted by qualified program assistants. We offer learn-to-skate programs for all age groups - Pre CanSkate (3-5 yrs); CanSkate (5+ yrs); Hockey SkillSkate (4-5 yrs) and Hockey SkillSkate "Advanced". Our Teen/Adult program (14 yrs +) is designed for the adult wanting to begin skating or skate for life. We offer STARSkate Junior, Intermediate and Senior sessions for test and competitive skaters.



SENIOR LADIES BADMINTON

Contact: Diane Walker | 905-468-0638

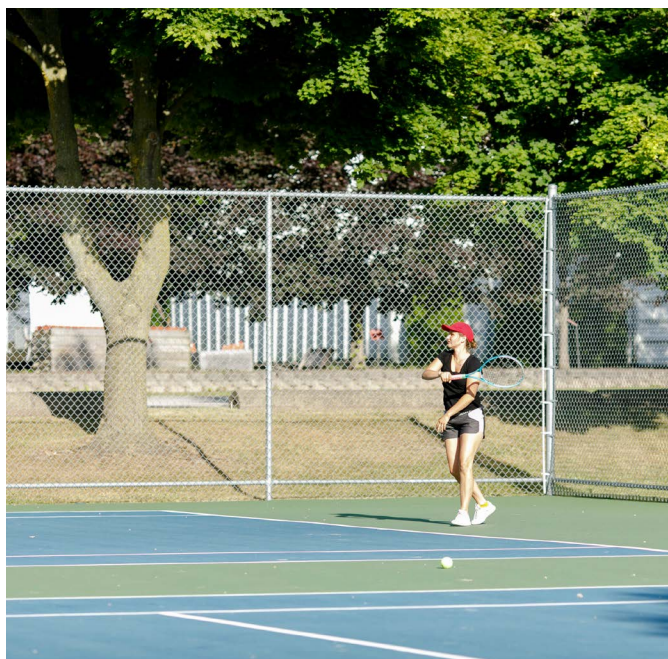
dianewalker4232@gmail.com

When: Wednesdays and Fridays 1:00 - 3:00 p.m.

Where: Auditorium, NOTL Community Centre

Cost: \$4.00 per session

We are a drop-in program for a group of enthusiastic ladies who want to have fun while keeping fit. If you are new to badminton and want to try the sport, a racquet can be provided.



NIAGARA-ON-THE-LAKE TENNIS CLUB

Contact: Marilyn Francis (Club President) | 905-932-1266

askus@niagaratennisclub.com | www.niagaratennisclub.com

Where: Memorial Park, 370 King Street, NOTL

The Niagara-on-the-Lake Tennis Club is a community, non-profit, volunteer-run organization located in Memorial Park. Our members and guests enjoy a wide range of play options on 6 hardcourts with lights for evening play. We offer a full range of programs from round robins, club groups, member-run groups, ball machine, tournaments, social events and an instructional program. Online court booking is available for members via GAMETIME. New members are always welcome. Please view our website niagaratennisclub.com for full details.

COMMUNITY GROUPS & ASSOCIATIONS



CLUBS & COMMITTEES

CASUAL BRIDGE CLUB

Contact: Jim Baird | 905-468-9313

jimbaird@sympatico.ca

When: Thursdays 12:30 - 4:00 p.m.

Where: Simpson Room, NOTL Community Centre

Cost: A \$2.00 donation toward prizes is suggested.

These are casual, non ACBL sanctioned games, geared to seniors. Basic bridge knowledge is required and less experienced players are offered support when needed.

We run four sessions of four games for a total of 16 games. No partner required.

NOTL DUPLICATE BRIDGE CENTRE

Contact: Heather Beckman | 905-468-1787

hbeckman606@gmail.com

When: Tuesdays and Fridays 1:00 – 4:00 p.m.

Where: Auditorium, NOTL Community Centre

Cost:

\$5.00 for members (per game)

\$7.00 for non-members (per game)

This ACBL-sanctioned Bridge Centre offers a friendly and welcoming setting for duplicate players. There are all levels of lessons available, including introductory bridge.

NOTL DUPLICATE BRIDGE CLUB

Contact: Pat Braun | 905-468-2335 or

Verne Chant | 905-468-0809 | vernechant@outlook.com

When: Thursdays 7:00 - 10:00 p.m.

Where: Simpson Room, NOTL Community Centre

Cost:

\$2.00 for members

\$3.00 for non-members

Membership fee is \$10.00 per year

The Duplicate Bridge Club has been active for over 60 years. It is a non-profit club run by volunteers. We have several social activities prior to the game throughout the year. Our aim is to provide a friendly atmosphere for playing duplicate bridge.

NOTL COMMUNITY FUND COMMITTEE NCF

Contact: Mike Berlis (Chair)

notlfund@niagaracommunityfoundation.org

When: Ongoing meetings

Niagara-on-the-Lake residents, passionate about community. Our committee works under the umbrella of the Niagara Community Foundation (NCF), offering NOTL residents opportunities to channel their philanthropic efforts directly to benefit charities in our town, and to help support the community in perpetuity.

NIAGARA GOLDEN AGE CLUB

Contact: Dawn Morris (President) | 905-468-0879

When: Tuesdays 12:00 - 5:00 p.m.

Where: Simpson Room, NOTL Community Centre

Cost: \$15.00 annual membership fee

Euchre begins at 1:00 p.m. This is a great way to meet and make new friends.

THE NOTL NEWCOMERS CLUB

Contact: notlnewcomers@hotmail.com

www.notlnewcomers.com

When: Last Friday of the month, September - May

Where: Simpson Room, NOTL Community Centre

Cost: \$30.00 annual membership fee

NOTL Newcomers is a social club for women who have moved to the NOTL community within the last three years or have changed circumstances and want to get to know others in the area. At the heart of our club are our many interest groups.

NOTL SOCIAL CLUB

Contact: Audrey Pellett | notlsocialclub@gmail.com

Where: NOTL Community Centre as well as other community locations

Cost: \$25.00 annual membership fee (\$10.00 renewal)

The Niagara-on-the-Lake Social Club is designed for active individuals and couples living or working/volunteering on a continuing basis in NOTL, and who enjoy meeting new people and camaraderie. There is a rich program of events and interest groups available to all members.

COMMUNITY GROUPS & ASSOCIATIONS

ROTARY CLUB OF NIAGARA-ON-THE-LAKE

Contact: Carol Lipsett | info@niagaraonthelakerotary.ca
www.niagaraonthelakerotary.ca

When: Tuesdays 12:00 - 1:30 p.m.

Where: Auditorium, NOTL Community Centre

Cost: \$290.00 annual membership fee

We are People of Action. Our global network of 1.4 million neighbours, friends, and leaders volunteer their skills and resources to solve issues and address community needs both locally and internationally. Join us to do good in the world, make new friends and have fun.

THE EPHEMERA CLUB

Contact: Marnie Taylor | 289-868-9799
marnie609@gmail.com

When: Every 3rd Tuesday morning of the month

Where: 43 Castlereagh Street, NOTL

Are you a collector of books, postcards, stamps, documents, or other fragile mementos of the past? The Ephemera Club meets the third Tuesday morning of the month at the Niagara-on-the-Lake Museum, September to June. Guests are always welcome.



LOCAL INTEREST GROUPS

THE DICKENS FELLOWSHIP NOTL CHAPTER

Contact: Gerry Hass | 905-643-3775
gerard.hass@raymondjames.ca

When: 2nd Tuesday of the month 6:30 - 8:30 p.m.
(September - June)

Where: Board Room, NOTL Community Centre

Cost: \$30.00 annual membership fee

Our explorations of the books are lively and respectful of differing points of view...and fun! This year we will be discussing Nicholas Nickleby, first published by Charles Dickens in 1838.

Did You Know?

Residents can purchase Parking Permits for NOTL's Heritage District. Learn more on page 23.

GARDEN CLUB OF NIAGARA

Contact: Elizabeth Goldman | 416-436-2012
elizabeth@jarilee.com

When: Monthly meet-ups

Where: Niagara Parks School of Horticulture
The Garden Club of Niagara was established in 1995. It's members are local residents with experience in horticulture and floral design. Each year, members dedicate their time to maintaining the 19th century gardens outside McFarland House and many other special events.

MAKE A CARD MONDAYS

Contact: Wilma Bosgraaf | 905-468-5363
wilmabosgraaf@hotmail.ca

When: Mondays 1:00 - 4:00 p.m.

Where: Simpson Room, NOTL Community Centre

Cost: \$5.00 class fee + \$3.50 per card made

Learn how to create beautiful greeting cards to send to friends and family for all sorts of occasions, Birthday, Christmas, Sympathy, Thinking of You etc. Beginners welcome, and no experience is required.

NOTL HORTICULTURAL SOCIETY

Contact: notlhortociety@gmail.com
notlhortociety.com

When: 4th Tuesday of the month 6:30 - 8:30 p.m.

Where: Auditorium, NOTL Community Centre

Cost: \$5.00 - \$30.00 annual membership fee

The Niagara-on-the-Lake Horticultural Society is one of the oldest horticultural societies in Ontario. Our mission is to encourage the continual joy of learning about gardening. We welcome everyone interested in gardening, horticulture, and and environmental stewardship.

MEANINGFUL CONVERSATIONS

Contact: Toubia | 905-359-6107
toubia.agahzadeh@gmail.com

When: First Tuesday of every month

Where: Sweets & Swirls Cafe, NOTL Community Centre
Join a group of enthusiastic ladies who get together every month to have meaningful conversations. 100% Free!

COMMUNITY GROUPS & ASSOCIATIONS



RELIGIOUS ACTIVITIES

BETHANY MENNONITE CHURCH

Contact: 905-468-3505 | office@bethanymennonite.ca
www.bethanymennonite.ca

When: Sundays 10:00 a.m.

Where: 572 East & West Line, NOTL

We have Adult Sunday School at 11:15 a.m. and two bell choirs: one for kids and one for adults on Tuesday nights. There are also regularly scheduled activities for everyone.

BAHÁ'Í COMMUNITY OF NOTL

Contact: 905-468-0834 | notlbahais@gmail.com

We hold regular devotional gatherings, study circles and other programs that impart the sense of joy, fellowship and love that embrace the human spirit that is universal and that enriches the relationships among participants. Please contact for details.

THE BORCK MEMORIAL CHURCH ST. SAVIOUR'S ANGLICAN

Contact: 905-262-5111

When: Sundays 10:30 a.m.

Where: 12 Princess Street, Queenston

CENTRAL COMMUNITY CHURCH

Contact: 905-937-5610 | www.centralcc.ca

When: Sundays 9:00 a.m. & 11:00 a.m.

Where: 680 York Road, NOTL

Our mission is simple: Helping you connect to God and others. We are a large, vibrant, multi-cultural community of people from all different walks of life in the Niagara Region. Whether you're brand new to us or you've been a part of our community for years, we want you to feel loved, known, and supported as we navigate this life together.

CORNERSTONE COMMUNITY CHURCH

Contact: 905-468-7155 | admin@ccchurch.ca
www.ccchurch.ca

When: Sundays 10:00 a.m.

Where: 434 Hunter Road, NOTL

You will experience a warm welcome, no matter who you are, no matter what questions and doubts you have, and no matter what your experiences with church has been in the past. Our worship gatherings are simple. We hope to shine the spotlight on God.

EMMANUEL GRACE CHURCH

Contact: emmanuelgracechurch@gmail.com

www.emmanuelgracechurch.ca

When: Sundays 9:45 a.m. – 12:30 p.m.

Where: 1416 Line 3 Road, NOTL

A time to share together, worship together and pray together from a Biblical worldview.

FIRST PRESBYTERIAN CHURCH ST. DAVIDS

Contact: 905-262-5227

firstpresbyterianstdavids@gmail.com

When: Sundays 10:30 a.m.

Where: 1442 York Road, St. Davids

GATEWAY COMMUNITY CHURCH

Contact: 905-468-8971 | office@gatewaynotl.com

www.gatewaynotl.com

When: Sundays 10:30 a.m.

Where: Simpson Room, NOTL Community Centre
Interim Pastor Dan Mcgalas leads our warm & welcoming multi-generational congregation.

GRACE UNITED CHURCH

Contact: 905-468-4044 | mail@graceunitedchurch.com

www.graceunitedchurch.com

When: Sundays 10:30 a.m. | Choir Thursdays 7:00 p.m.

Where: 222 Victoria Street, NOTL

Grace United is a vibrant and active church with a large choir and a passion for music.

LIFE ABUNDANT NIAGARA

Contact: 905-688-3958 | info@lifeabundantniagara.com

www.lifeabundantniagara.com

When: Sundays 10:30 a.m.

Where: 384 Concession 7 Road, NOTL

We love God, love people, and love our community.

ST. ANDREW'S PRESBYTERIAN CHURCH

Contact: 905-468-3363 | standrewsnotl@gmail.com
www.standrewsniagara.com

When: Sundays 11:00 a.m.

Where: 323 Simcoe Street, NOTL

St. Andrew's is a relatively small congregation, but one with a purposeful life. We are a church that believes in Jesus and loves God and people.



ST. MARK'S ANGLICAN CHURCH

Contact: 905-468-3123 | www.stmarksnotl.org

When: Sundays 8:30 a.m. & 10:30 a.m.

Where: 41 Byron Street, NOTL

St. Mark's was founded by the Rev. Robert Addison in 1792. The sandstone building was a prominent part of the community by 1804, was ravaged by fire in the War of 1812, but soon restored. The church and cemetery have been in continuous use longer than any others in Ontario. The Tuscan style Rectory, Addison Hall which houses Ontario's oldest library, the Church and Cemetery have always been a significant presence in Niagara-on-the-Lake.

ST. VINCENT DE PAUL ROMAN CATHOLIC PARISH

Contact: 905-468-7272 | st.vincentdepaul@bellnet.ca

When: Saturdays 5:00 p.m. and
Sundays 9:00 a.m. & 11:00 a.m.

Where: 73 Picton Street, NOTL

TRINITY LUTHERAN CHURCH

Contact: 289-213-8650 | trinitynotl@cogeco.ca
www.trinitynotl.com

When: Sundays 10:00 a.m.

Where: 2027 Niagara Stone Road, NOTL

NIAGARA UNITED MENNONITE CHURCH

Contact: 905-468-3313 | office@redbrickchurch.ca
www.redbrickchurch.ca

When: Sundays 10:45 a.m.

Where: 1775 Niagara Stone Road, NOTL

For parents with children from ages 3 to 10 we have our Red Brick Kids Program on Sundays from 9:15 a.m. until 10:20 a.m.

PRAYERS FOR UNITY & REFLECTIONS ON OUR ONENESS

Contact: Toubia Agahzadeh
toubia.agahzadeh@gmail.com

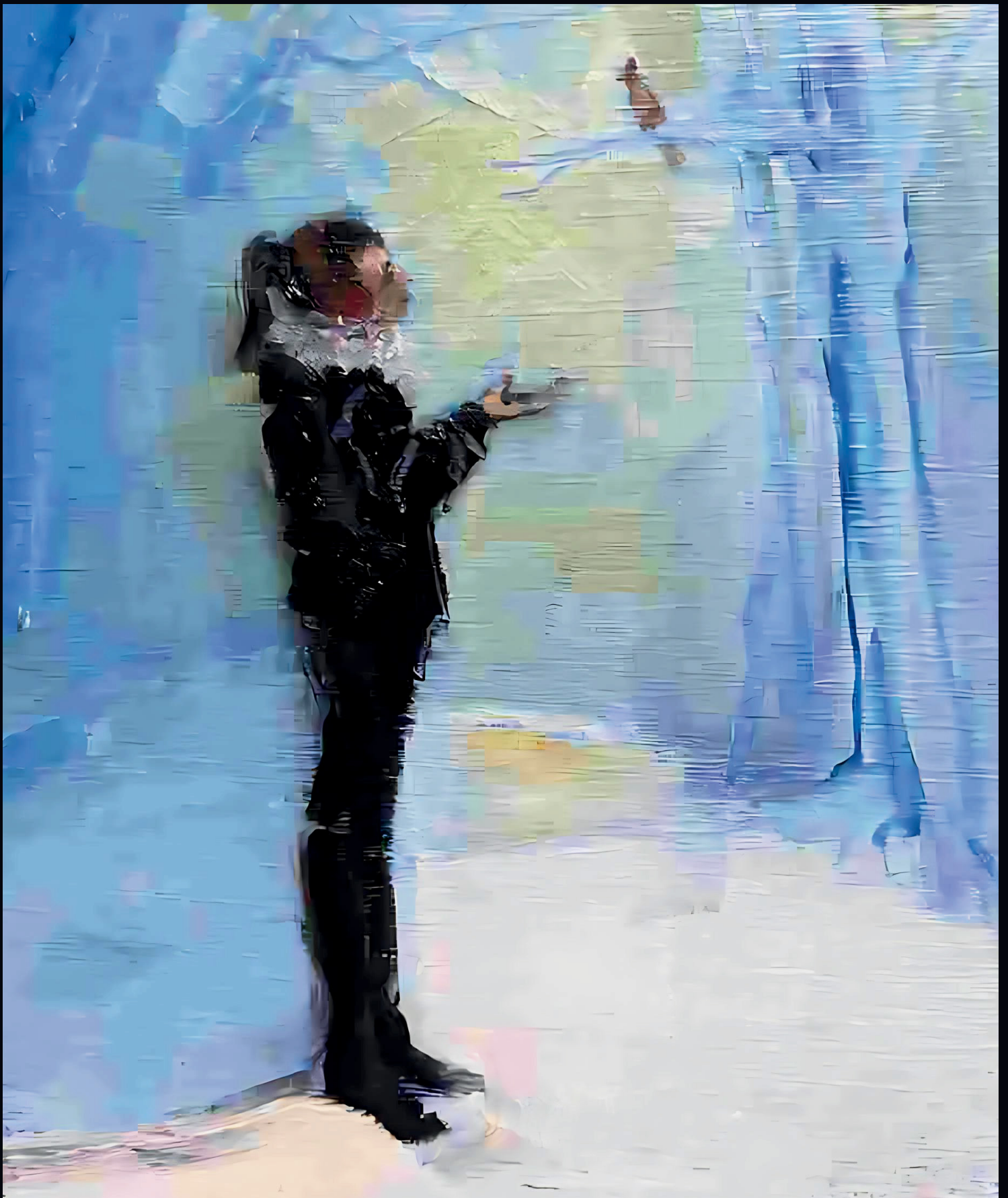
When: Fridays 7:00 p.m.

Where: 11 Harmony Drive, NOTL

Interfaith devotions. One people, One Destiny, One World. The beauty in our diversity. Please join us to pray for the Unity of mankind and to share your thoughts and prayers with others.

Scan the QR Code to
learn more about
religious activities in
Niagara-on-the-Lake.





King St. Gallery

Just around the corner and out of this world



153 King St. Niagara-on-the-Lake, ON
www.kingstgallery.com

ARTS, HERITAGE & CULTURE



ART PROGRAMS

NIAGARA PUMPHOUSE ARTS CENTRE

Contact: 905-468-5455 | office@niagarapumphouse.ca

Where: 247 Ricardo Street, NOTL

Niagara Pumphouse Arts Centre is the art hub that connects the community by providing ART for ALL. Nestled on the banks of the picturesque Niagara River, we offer a range of visual arts programs, exhibitions and events. We give back to the community by giving access to the arts for those in need.



HISTORIC SITES

FRIENDS OF FORT GEORGE

Contact: Amanda Gamble | 905-468-6621

admin@friendsoffortgeorge.ca

Where: Fort George National Historic Site

Cost:

\$30.00 for Individual Membership

\$50.00 for Family Membership

\$200.00 for Corporate Membership

\$500.00 for Lifetime Membership

The Friends of Fort George is a non-profit, charitable organization that works with Parks Canada for the protection, preservation, development and interpretation of the historical resources and stories of national significance of Niagara National Historic Sites.

The Friends of Fort George offer special programs throughout the year, including members only events, Jane Austen themed events, fundraiser dinners, historical tours, lectures, ghost tours, and more!



PARKS CANADA - HISTORIC SITES

Contact: 905-262-4759 | ont-niagara@pc.gc.ca

Parks Canada is responsible for protecting and presenting Niagara National Historic Sites and invites you to discover, explore and enjoy some of the most spectacular historic treasures in the Niagara region, including Fort George, Navy Hall, Brock's Monument, Fort Mississauga, Butler's Barracks and the Commons. For more information about programs, special events, the Fife and Drum Corps, volunteer opportunities and information in general, please visit www.pc.gc.ca.

WILLIAM SHAKESPEARE REVISITED

Contact: Jim Webber | jimweibo@hotmail.com

When: The fourth Wednesday of every month 2:00 - 4:00 p.m.

Where: Board Room, NOTL Community Centre

Cost: \$25.00 Annual Membership fee

A unique approach to enjoying and understanding Shakespeare! We meet monthly to read the plays aloud, then discuss them. Bring a copy of the play if you can. For Fall 2024 we will read *The Merchant of Venice*, followed by *As You Like It* in 2025.

ARTS, HERITAGE & CULTURE



MUSEUMS

MACKENZIE PRINTERY

Contact: www.niagaraparks.com

When: 10:00 a.m. - 5:00 p.m. (May to October)

Where: 1 Queenston Street, Queenston

The Mackenzie Printery offers a hands-on experience with a working linotype and eight operating heritage presses. Don't miss the oldest printing press in Canada.

RIVERBRINK ART MUSEUM

Contact: Janet Zylstra | 905-262-4510

jzylstra@riverbrink.org

Where: 116 Queenston Street, NOTL

RiverBrink Art Museum is a collecting and exhibiting art museum open to the public since 1983. Museum programming and operating is supported by the Weir Foundation, private donations, volunteers' fundraising, and admissions fees. The museum's exhibitions and educational offerings change regularly.

NIAGARA-ON-THE-LAKE CHAMBER OF COMMERCE - EVENTS

2024 Candlelight Stroll:

Friday, December 6, 2024, 6:00 p.m. - 9:00 p.m.

2024 Niagara-on-the-Lake Christmas Parade:

Saturday, December 14, 2024

For more events and details, please visit

www.niagaraonthelake.com/events.



Photo by Cindy Baisley



Visit Your MUSEUM

about
us

- Preserves the history of ALL of NOTL's communities
- Temporary exhibits on local heritage
- Kid Curator Camp in July & August
- Look for our Tiny Museum with rotating exhibits around Town
- Historical lectures and other programs
- Walking Tours, weekends in June - Sept
- Research library services
- Gift shop with unique gifts and books
- Niagara Polo on the Commons in Sept
- Community Courtyard
- November Poppy display



Owned & operated by the
Niagara Historical Society
since 1895

BECOME A MEMBER:

- free admission
- members-only events
- discounts in the gift shop & with our loyalty partners
- free lectures and specialty pricing on select programs

CONTACT INFO:

43 Castlereagh St.
contact@nhsm.ca
905.468.3912

Open Every Day:
May to Oct 10am-5pm
Nov to April 1pm-5pm



NOTLMUSEUM.CA

www.bluespringsirrigation.ca

Setting the New Industry Standard

EXPERIENCE THE BLUE SPRINGS DIFFERENCE



Did You Know?

The Queen's Royal Park Gazebo can be rented for weddings and photo shoots. Learn more on page 29.



Show Staff Some Love



Have you had a positive experience with Town Staff?
We would love to hear about it!

Scan the QR Code to compliment
a Town employee **NOW**.





Angelika & ASSOCIATES

LUXURY REAL ESTATE

FIND YOUR DREAM HOME
CALL YOUR DREAM TEAM
HELPING YOU EVERY STEP OF THE WAY!

905-468-8777

**We Pack
Your House
For FREE!**



See Our Ads Weekly!



Clare Pajot
REALTOR®



Angelika Zammit
REALTOR®/Team Lead
289-214-4394



Enya Pastirik
REALTOR®