

ARBORIST REPORT

Pertaining to:

237 Anne St.
Niagara-on-the-Lake, ON
L0S 1J0

Prepared for:



Arborwood Tree Service Inc.
7838 Twenty Rd. S.
Smithville, ON
L0R 2A0

Prepared by:



Urban Arboretum Tree Consulting
2309 Mountain Grove Ave.
Burlington, ON
L7P 2H8
P. 647-884-7716
contact@urbanarboretum.ca

Created: December 12, 2022
Last revised: May 23, 2023

Introduction

Urban Arboretum Tree Consulting (the arborist) was retained by Arborwood Tree Service Inc. (the client) to complete an arborist report pertaining to 237 Anne Street, Niagara-on-the-Lake (the subject site). The report was requested relative to a proposed property severance, driveway installation and shed removals (the scope).

The purpose of this report is to:

- Establish species, size and condition of trees as required by the Niagara-on-the-Lake, also to provide written tree protection recommendations.
- Provide a Tree Protection Plan showing required tree protection measures.

Methodology

1. The subject site was assessed on December 5, 2022, by the arborist.
2. Photos were taken at the time of assessment and the most representative are attached as Appendix I.
3. Trees within the following categories were assessed and recorded in this Arborist Report:

Ownership Category	Description
1 - Private	Trees with diameters of 10 cm or greater, situated on private property on the subject site.
2 – Neighbor	Trees with diameters of 10 cm or greater, situated on private property within 6 meters of the subject site.
5 – Public	Trees of all diameters situated within City property.
6 – Boundary	Trees located on the property line with an adjoining site where the property line crosses the main stem of the tree prior to the formation of the first scaffold limb.

4. Trunk diameter was measured using a calibrated diameter tape. The measurement was taken at 1.4 meters above ground level, generally referred to as the diameter at breast height (DBH). For trees located on adjacent private property DBH was estimated.
5. Trees were assessed in consideration of overall biological condition and structural condition and assigned a condition rating ranging from good (70-100%) to fair (40-69%) to poor (0-39%) for both categories.
6. Tree protection comments were added by the arborist to a site plan created by J.D. Barnes Ltd. Ref# 22-16-089-00 dated October 31, 2022.

Tree Protection Plan

Pre-Construction

1. The following tree protection measures must be read in conjunction with the Tree Protection Plan (Appendix III). Both documents must be provided to the site supervisor prior to any work commencing on the site.
2. A tree protection zone for all privately owned trees with a DBH of 10cm or greater was shown on the Tree Protection Plan. The tree protection zone is to be the dripline of the protected tree or clump of trees.
3. Tree protection fencing must be installed prior to the start on demolition or construction on the site and approved by Niagara-on-the-Lake forestry department.

Construction Phase

4. It is the responsibility of the site supervisor to inspect the condition of the tree protection measures outlined on the tree protection plan and within this report each morning. If disturbance to the barriers is observed, it is to be repaired prior to work commencing on site that day.
5. Tree protection barriers must remain in place and in good condition during demolition, construction and/or site disturbance, including landscaping, and must not be altered, moved, or removed until authorized by Urban Forestry.
6. During construction, if any tree roots are exposed or disturbed outside the tree protection zone (TPZ), care is to be taken to minimize their disturbance. If roots must be removed outside the TPZ, they are to be cleanly pruned. Tearing roots hinders wound closure and can increase risk of disease and root rot.

Post-Construction

7. At the completion of the project, Urban Forestry is to be notified prior to removal of the tree protection fencing on the site. With approval, the fencing may be dismantled.

Additional Notes

1. For additional information on tree care and management techniques as a tree owner see <http://www.treesaregood.com/treeowner/treeownerinformation.aspx> for a list of educational brochures provided by the International Society of Arboriculture.

Questions or requests for additional information relative to this report should be directed to the undersigned at 647-884-7716.



Kyle Berwick, N.P.D., R.P.F. in Training
I.S.A. Board Certified Master Arborist # ON-1786B
I.S.A. Tree Risk Assessment Qualified
Certified Butternut Health Assessor #437

Limitations of Assessment

It is the policy of Urban Arboretum Tree Consulting to attach the following clause regarding limitations. We do this to ensure that the client is aware of what is technically and professionally realistic in assessing and retaining trees.

The assessment(s) of the tree(s) presented in this report have been made using accepted and proper arboricultural techniques. This includes an aboveground examination of the tree(s) including but not limited to evidence of structural defects, external indications of rot or decay, cracking, included bark unions, pests and diseases, foliage and shoot health, natural or unnatural lean, root structures, site conditions, proximity to property and people. Unless otherwise noted assessments do not include probing, coring, sounding, climbing assessments, root excavation, pull testing, or any other advanced assessment techniques.

Notwithstanding the recommendations and conclusions in this report, it must be recognized that trees are living organisms and their health, structure and vigor are constantly changing. They can be susceptible to changes in the seasons or weather conditions. Weather events such as windstorms, ice storms and thunderstorms may result in partial or complete tree failure regardless of assessment results.

While reasonable efforts have been made to accurately assess the overall condition of the subject tree(s), no guarantee or warranty is offered, expressed, or implied, that the tree(s) or any of its parts will remain standing or in stable condition. It is both professionally and practically impossible to predict with absolute certainty the behavior of any single tree or its component parts, regardless of the assessment methodology implemented. Inevitably a standing tree will always pose some level of risk. Most trees have the potential for failure in adverse weather conditions.

Although every effort has been made to ensure that this assessment is reasonably accurate, the tree(s) should be re-assessed periodically. The assessment presented in this report is only valid at the time of inspection.



Kyle Berwick, N.P.D., R.P.F. in Training
I.S.A. Board Certified Master Arborist # ON-1786B
I.S.A. Tree Risk Assessment Qualified
Certified Butternut Health Assessor #437

Appendix I – Photographs



Photo 1. Proposed driveway location.

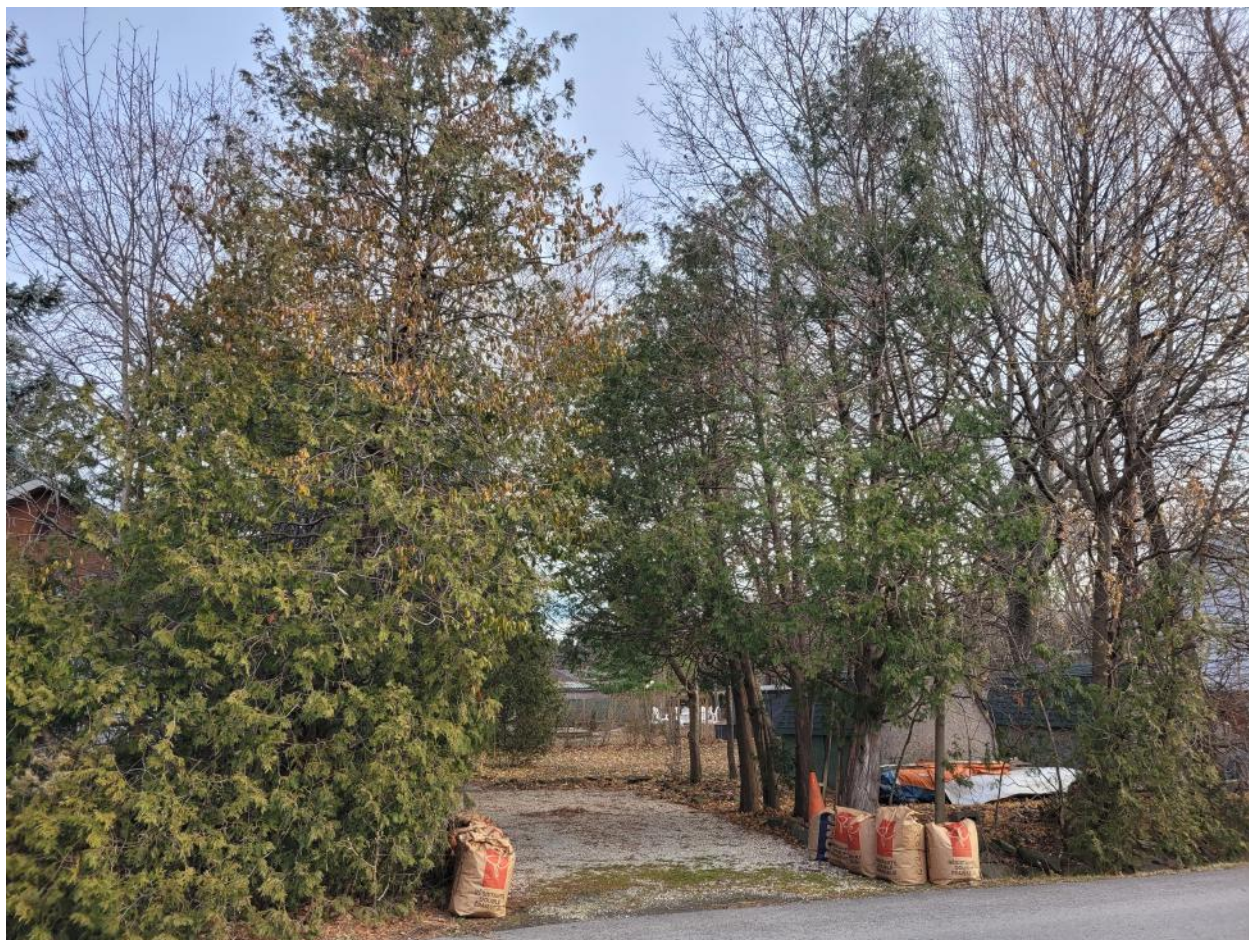


Photo 2. Existing driveway location.

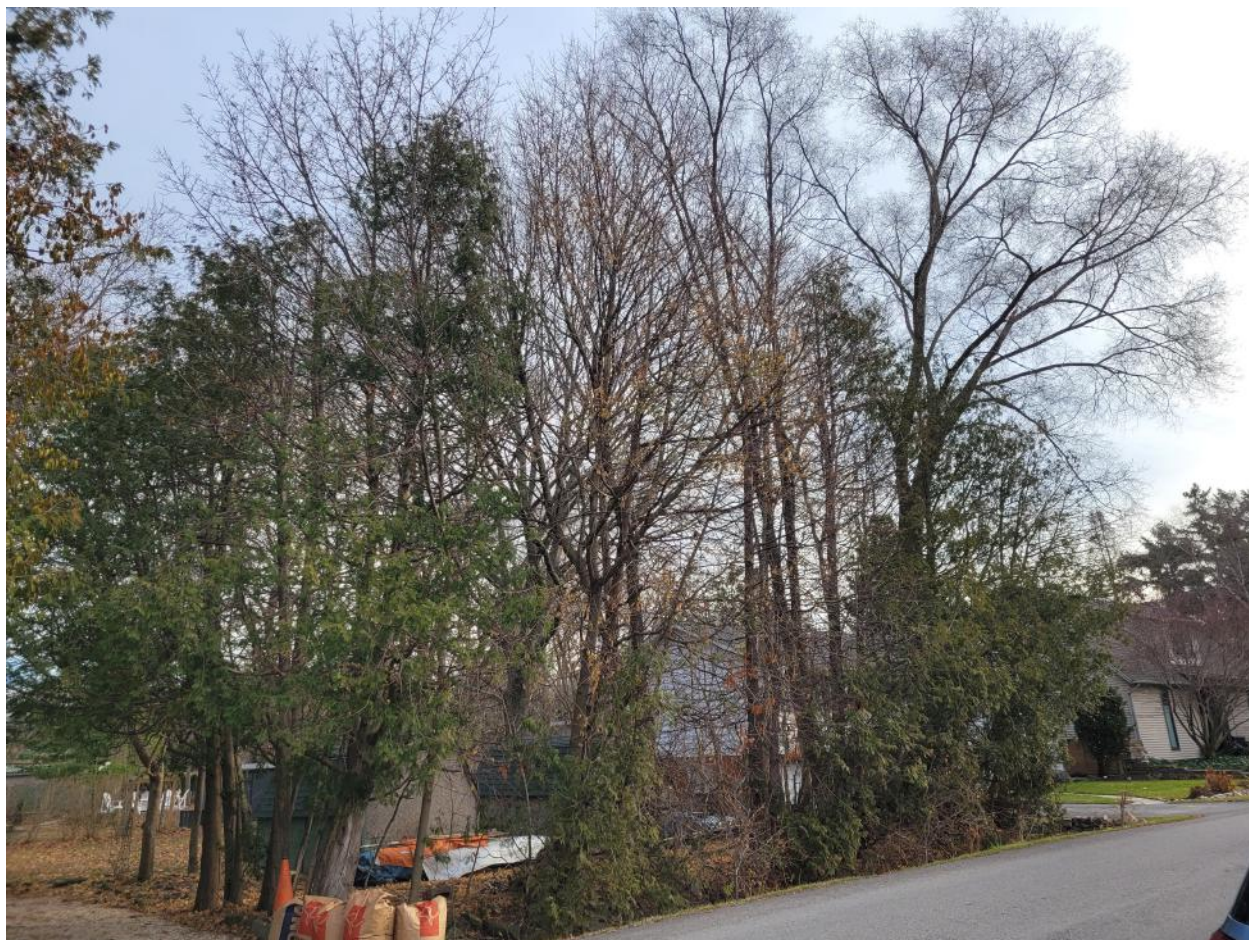


Photo 3. Second proposed driveway location.



Photo 4. Existing sheds proposed for removal.

Appendix II – Tree Inventory

Date: May 23, 2023



Chart Details:

Tree #: Inventoried trees were assigned an identification number

Species: Includes the botanical name and common name of each tree.

DBH: Diameter in cm measured at 1.4 meters from the ground (diameter at breast height). DBH measurements for trees on neighboring properties are estimated.

Crown Radius: Average radius of drip line in meters.

Biological Condition Rating: Overall condition rating from good (70-100%) to fair(40-69%) to poor (0-39%) based on overall health.

Structural Condition Rating: Overall rating from good (70-100%) to fair(40-69%) to poor (0-39%) based on tree Structure.

Condition Comments: Specific observations from the visual assessment that have informed the condition rating.

Minimum TPZ: Minimum required tree protection zone in meters.

Ownership Category: Ownership of tree based on the supplied survey.

Recommended Action & Details: Arborist Recommendations.

Tree #	Species	DBH (cm)	Crown Radius (m)	Biological Condition	Structural Condition	Condition Comments	Min TPZ (m)	Ownership Category	Recommended Action & Details
1	<i>Acer platanoides</i> (Norway maple)	27	4	Good	Fair	Fair central leader	4	Private	Preserve
2	<i>Ulmus pumila</i> (Siberian elm)	67	7	Fair	Fair	Bifurcates at base (~50 & 45cn DBH); large diameter deadwood.	7	Neighbor	Preserve
3	<i>Ulmus pumila</i> (Siberian elm)	52	5	Fair	Fair	Bifurcates at base (~50 & 15cn DBH); large diameter deadwood.	5	Neighbor	Preserve

237 Anne St. - Tree Inventory
Appendix II

Tree #	Species	DBH (cm)	Crown Radius (m)	Biological Condition	Structural Condition	Condition Comments	Min TPZ (m)	Ownership Category	Recommended Action & Details
4	<i>Ulmus pumila</i> (Siberian elm)	56	5	Fair	Fair	Bifurcates at ~3m.	5	Private	Preserve
5	<i>Ulmus pumila</i> (Siberian elm)	16	2	Fair	Fair	Suppressed crown.	2	Private	Preserve
6	<i>Ulmus pumila</i> (Siberian elm)	18	2	Fair	Fair	Suppressed crown.	2	Private	Preserve
7	<i>Ulmus pumila</i> (Siberian elm)	27	2	Fair	Fair	Two main stems (24 & 12cm DBH); suppressed crown; large diameter deadwood.	2	Private	Preserve
8	<i>Ulmus pumila</i> (Siberian elm)	64.5	8	Fair	Fair	Two main stems (42 & 49cm DBH); asymmetrical crown due to adjacent tree; large diameter deadwood.	8	Private	Preserve
9	<i>Prunus serrulata</i> (flowering cherry)	31	3	Fair	Fair	Bifurcates at ~2m; asymmetrical crown.	3	Private	Injure - Proposed work inside dripline.
10	<i>Quercus rubra</i> (red oak)	74	8	Good	Fair	Decurrent habit; minor deadwood.	8	Private	Injure - Proposed work inside dripline.
11	<i>Ulmus pumila</i> (Siberian elm)	22	1	Fair	Poor	Suppressed crown.	1	Boundary	Preserve
12	<i>Ulmus pumila</i> (Siberian elm)	32	4	Fair	Fair	Asymmetrical due to adjacent tree.	4	Boundary	Injure - Proposed work inside dripline.

237 Anne St. - Tree Inventory
Appendix II

Tree #	Species	DBH (cm)	Crown Radius (m)	Biological Condition	Structural Condition	Condition Comments	Min TPZ (m)	Ownership Category	Recommended Action & Details
13	<i>Ulmus pumila</i> (Siberian elm)	21	1	Fair	Fair	Suppressed crown.	1	Boundary	Preserve
14	<i>Ulmus pumila</i> (Siberian elm)	51	5	Fair	Fair	Bifurcates near ground (43 & 27cm DBH); minor deadwood.	5	Potential Boundary	Injure - Proposed work inside dripline.
15	<i>Ulmus pumila</i> (Siberian elm)	60	8	Fair	Fair	Bifurcates at ~6m; minor deadwood.	8	Boundary	Injure - Proposed work inside dripline.
16	<i>Thuja occidentalis</i> (white cedar)	18	1	Fair	Fair	Cohort, asymmetrical & suppressed by adjacent trees.	1	Boundary	Preserve
17	<i>Thuja occidentalis</i> (white cedar)	18	2.5	Good	Good	2 main stems (16 & 9cm DBH); cohort; good central leader.	2.5	Private	Remove - Due to proposed driveway.
18	<i>Thuja occidentalis</i> (white cedar)	32	2	Good	Fair	Bifurcates at base (26 & 18cm DBH); cohort.	2	Private	Remove - Due to proposed driveway.
19	<i>Thuja occidentalis</i> (white cedar)	24	2	Poor	Fair	Bifurcates near base (24 & 15cm DBH); 75% crown dieback.	2	Private	Remove - Due to proposed driveway.
20	<i>Acer platanoides</i> (Norway maple)	34	5	Fair	Fair	co-dominate crown; decurrent habit.	5	Private	Injure - Proposed work inside dripline.
21	<i>Thuja occidentalis</i> (white cedar)	21	1	Dead	Poor	Dead.	1	Private	Remove - Due to condition.
22	<i>Thuja occidentalis</i> (white cedar)	23	1	Dead	Poor	Dead.	1	Private	Remove - Due to condition.

237 Anne St. - Tree Inventory
Appendix II

Tree #	Species	DBH (cm)	Crown Radius (m)	Biological Condition	Structural Condition	Condition Comments	Min TPZ (m)	Ownership Category	Recommended Action & Details
23	<i>Acer platanoides</i> (Norway maple)	17	2.5	Fair	Fair	Asymmetrical & cohort with adjacent trees.	2.5	Private	Preserve
24	<i>Thuja occidentalis</i> (white cedar)	28	2	Good	Fair	Fair central leader; cohort and asymmetrical with adjacent trees.	2	Private	Preserve
25	<i>Acer platanoides</i> (Norway maple)	16	2	Fair	Fair	Cohort with adjacent trees.	2	Private	Preserve
26	<i>Thuja occidentalis</i> (white cedar)	18	1.5	Good	Fair	Cohort and Asymmetrical with adjacent trees.	1.5	Private	Preserve
27	<i>Thuja occidentalis</i> (white cedar)	19	2	Good	Fair	Cohort and Asymmetrical with adjacent trees.	2	Private	Preserve
28	<i>Thuja occidentalis</i> (white cedar)	20	2	Good	Fair	Cohort and Asymmetrical with adjacent trees.	2	Private	Preserve
29	<i>Thuja occidentalis</i> (white cedar)	23	2	Good	Fair	Cohort and Asymmetrical with adjacent trees.	2	Private	Preserve
30	<i>Morus alba</i> (white mulberry)	21	2	Good	Fair	Decurrent habit; Asymmetrical with adjacent trees.	2	Private	Preserve
31	<i>Acer platanoides</i> (Norway maple)	14	2	Good	Fair	Fair central leader	2	Private	Injure - Proposed work inside dripline.

237 Anne St. - Tree Inventory
Appendix II

Tree #	Species	DBH (cm)	Crown Radius (m)	Biological Condition	Structural Condition	Condition Comments	Min TPZ (m)	Ownership Category	Recommended Action & Details
32	<i>pinus strobus</i> (white pine)	18.5	2.5	Fair	Fair	Fair central leader; suppressed crown.	2.5	Private	Injure - Proposed work inside dripline.
33	<i>Thuja occidentalis</i> (white cedar)	22	2.5	Good	Good	Good central leader.	2.5	Private	Preserve
34	<i>Thuja occidentalis</i> (white cedar)	31	2.5	Fair	Fair	Large euonymus vine in crown; codominant leaders.	2.5	Private	Preserve
35	<i>Juglans nigra</i> (black walnut)	22	4	Good	Good	Fair central leader; good shoot extension.	4	Private	Injure - Proposed work inside dripline.
36	<i>Thuja occidentalis</i> (white cedar)	22	2	Good	Good	Decurrent crown; understory tree.	2	Private	Preserve
37	<i>Juglans nigra</i> (black walnut)	24	4	Good	Poor	Five main stems at ~3m.	4	Boundary	Remove - Due to proposed driveway.
38	<i>Picea pungens</i> (blue spruce)	43	4	Good	Good	Good central leader; dominant crown.	4	Private	Injure - Proposed work inside dripline.
39	<i>Thuja occidentalis</i> (white cedar)	28	3	Good	Fair	Decurrent habit; four main leaders.	3	Private	Preserve
40	<i>Prunus serrulata</i> (flowering cherry)	35	4	Fair	Poor	Decurrent habit; Asymmetrical with adjacent trees.	4	Private	Preserve
41	<i>Acer platanoides</i> (Norway maple)	37	5	Good	Fair	Decurrent habit; codominant crown.	5	Private	Injure - Proposed work inside dripline.

237 Anne St. - Tree Inventory
Appendix II

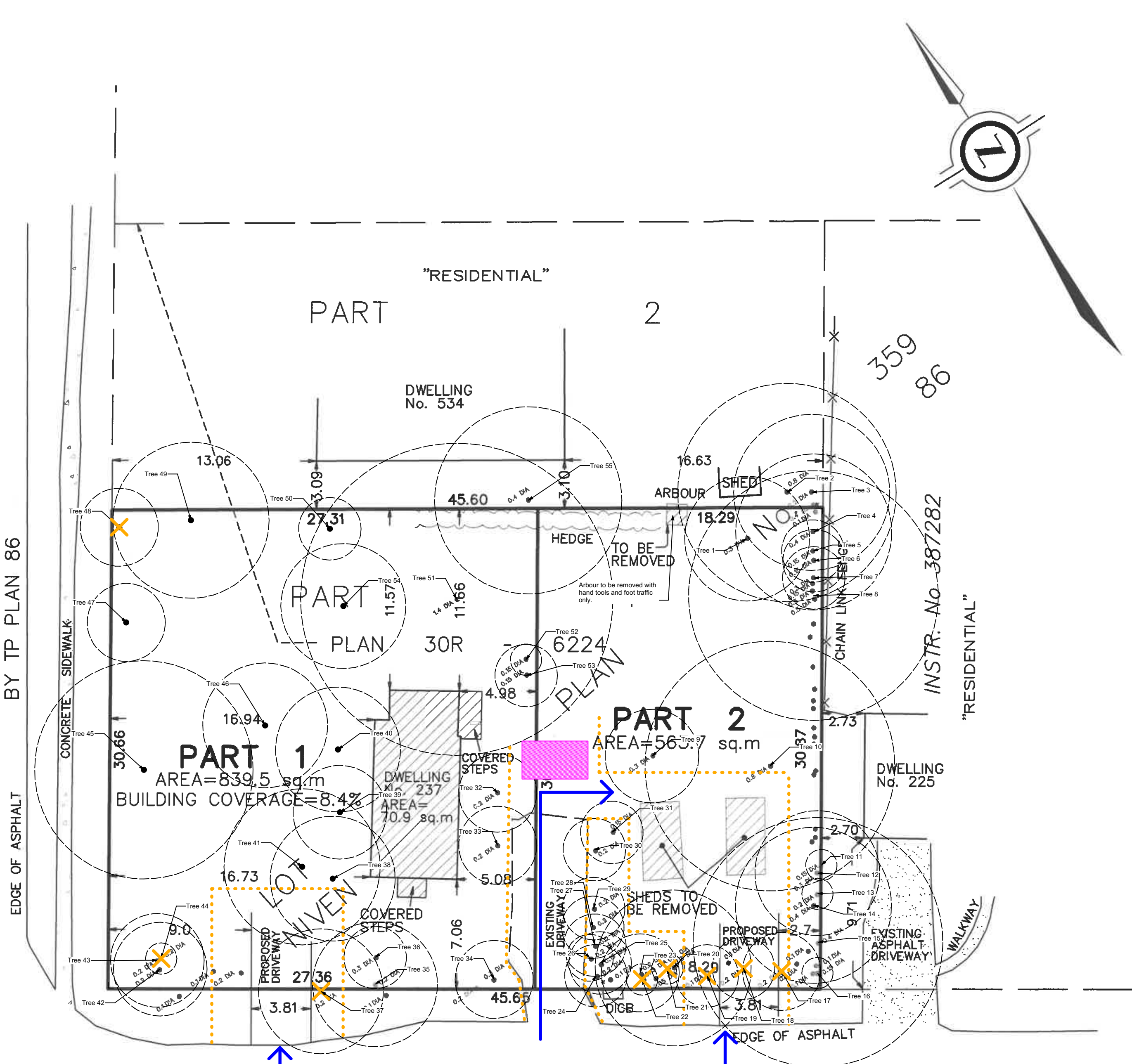
Tree #	Species	DBH (cm)	Crown Radius (m)	Biological Condition	Structural Condition	Condition Comments	Min TPZ (m)	Ownership Category	Recommended Action & Details
42	<i>Acer saccharum</i> (sugar maple)	25	3	Good	Poor	Bifurcates at ~1 m with included union (17 & 18cm DBH).	3	Private	Preserve
43	<i>Acer saccharum</i> (sugar maple)	17	3	Good	Fair	Cohort with adjacent trees.	3	Private	Preserve
44	<i>Fraxinus pennsylvanica</i> (green ash)	14	1	Dead	Poor	Dead - EAB.	1	Private	Remove - Due to condition.
45	<i>Acer platanoides</i> (Norway maple)	48	7	Good	Fair	Bifurcates near base(31 & 33cm DBH); decurrent habit.	7	Private	Preserve
46	<i>Thuja occidentalis</i> (white cedar)	52	4	Good	Good	Good central leader.	4	Private	Preserve
47	<i>Ulmus americana</i> (American elm)	17	2.5	Good	Fair	Three from base (13, 7 & 8cm DBH).	2.5	Private	Preserve
48	<i>Fraxinus pennsylvanica</i> (green ash)	18	2.5	Poor	Poor	EAB infestation.	2.5	Private	Remove - Due to condition.
49	<i>Thuja occidentalis</i> (white cedar)	46	5	Good	Fair	Four stems from base (30, 24, 18 & 17cm DBH).	5	Private	Preserve
50	<i>Thuja occidentalis</i> (white cedar)	29	2	Good	Good	Fair central leader	2	Private	Preserve
51	<i>Acer saccharinum</i> (silver maple)	155	10	Good	Fair	Six main stems at ~3-4m with included bark; good bud set.	10	Private	Preserve

237 Anne St. - Tree Inventory
Appendix II

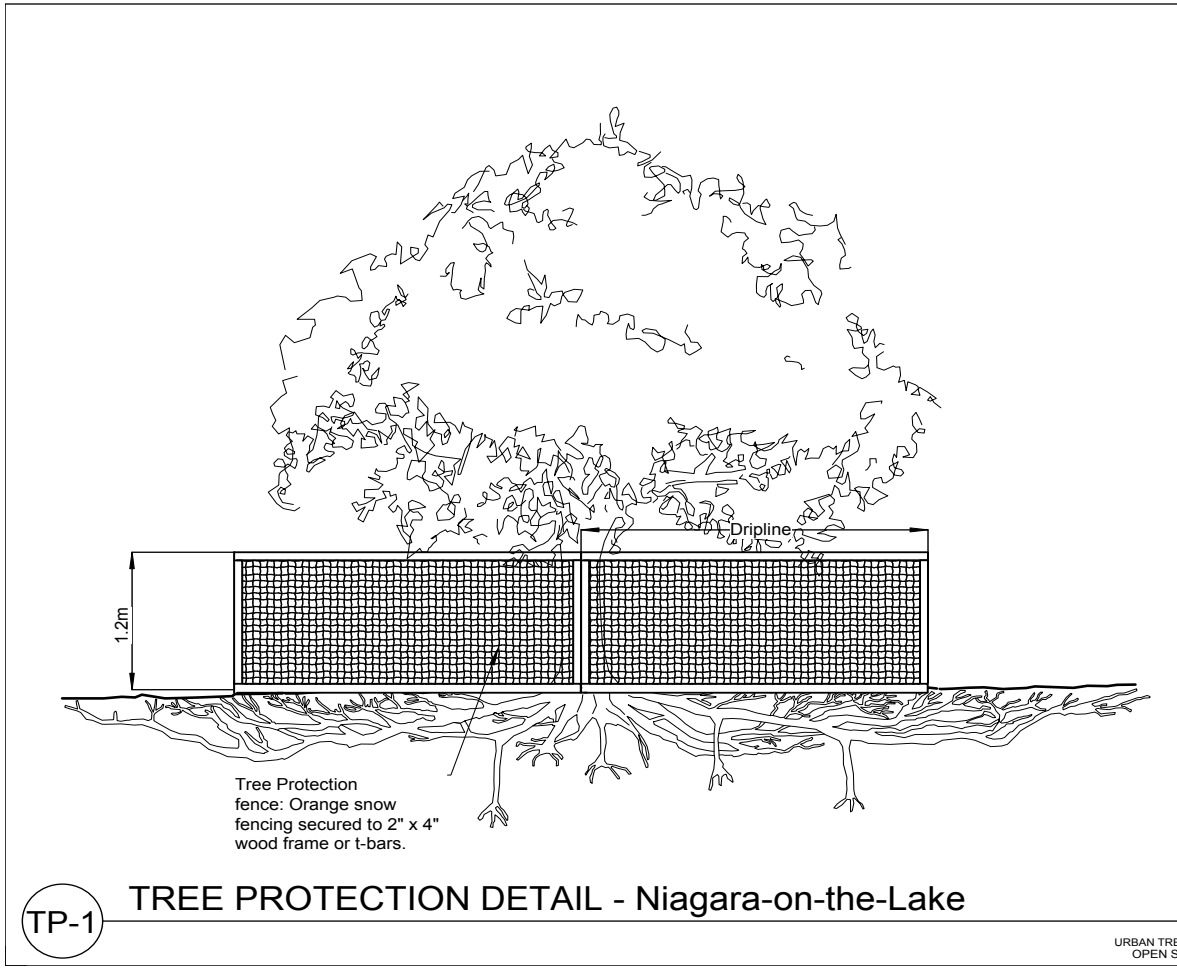
Tree #	Species	DBH (cm)	Crown Radius (m)	Biological Condition	Structural Condition	Condition Comments	Min TPZ (m)	Ownership Category	Recommended Action & Details
52	<i>Thuja occidentalis</i> (white cedar)	13	1	Good	Fair	Suppressed & cohort crown.	1	Private	Preserve
53	<i>Thuja occidentalis</i> (white cedar)	21	2	Good	Fair	two main stems (16 & 13cm DBH); suppressed & cohort crown.	2	Private	Preserve
54	<i>Magnolia stellata</i> (star magnolia)	21	4	Fair	Fair	Multi-stem from base (14, 13 & 9cm DBH); moderate deadwood.	4	Private	Preserve
55	<i>Plantanus occidentalis</i> (American sycamore)	50	6	Good	Good	Good central leader; dominant crown.	6	Neighbor	Preserve

Appendix III – Tree Protection Plan

MISSISSAUGA STREET
(MUNICIPAL ROAD - 29.26 WIDE)
BY TP PLAN 86



ANNE STREET
(MUNICIPAL ROAD - 20.12 WIDE)
BY TP PLAN 86



Tree #	Species	DBH (cm)	Crown Radius (m)	Biological Condition Rating	Structural Condition Rating	Condition Comments	Min TPZ (m)	Ownership	Recommended Action
1	Acer glaberrimum (Norway maple)	27	4	Good	Fair	Fair central leader	4	Private	Preserve
2	Ulmus parviflorus (Siberian elm)	67	7	Fair	Fair	Bifurcates at base (-50 & 45cm DBH); large diameter deadwood	7	Neighbor	Preserve
3	Ulmus parviflorus (Siberian elm)	52	5	Fair	Fair	Bifurcates at base (-50 & 15cm DBH); large diameter deadwood	5	Neighbor	Preserve
4	Ulmus parviflorus (Siberian elm)	56	5	Fair	Fair	Bifurcates at -3m	5	Private	Preserve
5	Ulmus parviflorus (Siberian elm)	16	2	Fair	Fair	Suppressed crown	2	Private	Preserve
6	Ulmus parviflorus (Siberian elm)	18	2	Fair	Fair	Suppressed crown	2	Private	Preserve
7	Ulmus parviflorus (Siberian elm)	27	2	Fair	Fair	Two main stems (24 & 12cm DBH); suppressed crown; large diameter deadwood	2	Private	Preserve
8	Ulmus parviflorus (Siberian elm)	44.5	8	Fair	Fair	Two main stems (28 & 49cm DBH); asymmetrical crown; large diameter deadwood	8	Private	Preserve
9	Prunus pennsylvanica (Flowering cherry)	31	3	Fair	Fair	Bifurcates at -3m; asymmetrical crown	3	Private	Injure - Proposed work inside drip line
10	Quercus alba (red oak)	74	8	Good	Fair	Decurrent habit; minor deadwood	8	Private	Injure - Proposed work inside drip line
11	Ulmus parviflorus (Siberian elm)	22	1	Fair	Poor	Suppressed crown	1	Boundary	Preserve
12	Ulmus parviflorus (Siberian elm)	32	4	Fair	Fair	Asymmetrical due to adjacent tree	4	Boundary	Injure - Proposed work inside drip line
13	Ulmus parviflorus (Siberian elm)	21	1	Fair	Fair	Suppressed crown	1	Boundary	Preserve
14	Ulmus parviflorus (Siberian elm)	51	5	Fair	Fair	Bifurcates near ground (43 & 27cm DBH); minor deadwood	5	Potential Boundary	Injure - Proposed work inside drip line
15	Ulmus parviflorus (Siberian elm)	40	8	Fair	Fair	Bifurcates at -6m; minor deadwood	8	Boundary	Injure - Proposed work inside drip line
16	Thuja occidentalis (Larch tree)	18	1	Fair	Fair	Columnar; asymmetrical & suppressed by adjacent tree	1	Boundary	Preserve
17	Thuja occidentalis (Larch tree)	18	2.5	Good	Good	2 main stems (14 & 8cm DBH); columnar; good central leader	2.5	Private	Remove - Due to proposed driveway
18	Thuja occidentalis (Larch tree)	32	2	Good	Fair	Bifurcates at base (24 & 18cm DBH); columnar	2	Private	Remove - Due to proposed driveway
19	Thuja occidentalis (Larch tree)	24	2	Poor	Fair	Bifurcates near base (24 & 15cm DBH); 75% crown dieback	2	Private	Remove - Due to proposed driveway
20	Acer glaberrimum (Norway maple)	34	5	Fair	Fair	co-dominant crown; decurrent habit	5	Private	Injure - Proposed work inside drip line
21	Thuja occidentalis (Larch tree)	21	1	Dead	Poor	Dead	1	Private	Remove - Due to condition
22	Thuja occidentalis (Larch tree)	23	1	Dead	Poor	Dead	1	Private	Remove - Due to condition
23	Acer glaberrimum (Norway maple)	17	2.5	Fair	Fair	Asymmetrical & columnar with adjacent trees	2.5	Private	Preserve
24	Thuja occidentalis (Larch tree)	28	2	Good	Fair	Fair central leader; columnar and asymmetrical with adjacent trees	2	Private	Preserve
25	Acer glaberrimum (Norway maple)	16	2	Fair	Fair	Columnar with adjacent trees	2	Private	Preserve
26	Thuja occidentalis (Larch tree)	18	1.5	Good	Fair	Columnar and asymmetrical with adjacent trees	1.5	Private	Preserve
27	Thuja occidentalis (Larch tree)	19	2	Good	Fair	Columnar and asymmetrical with adjacent trees	2	Private	Preserve
28	Thuja occidentalis (Larch tree)	20	2	Good	Fair	Columnar and asymmetrical with adjacent trees	2	Private	Preserve
29	Thuja occidentalis (Larch tree)	23	2	Good	Fair	Columnar and asymmetrical with adjacent trees	2	Private	Preserve
30	Prunus pennsylvanica (Flowering cherry)	21	2	Good	Fair	Decurrent habit; asymmetrical with adjacent trees	2	Private	Preserve
31	Acer glaberrimum (Norway maple)	14	2	Good	Fair	Fair central leader	2	Private	Injure - Proposed work inside drip line
32	Prunus pennsylvanica (Flowering cherry)	18.5	3.5	Fair	Fair	Fair central leader; suppressed crown	2.5	Private	Injure - Proposed work inside drip line
33	Thuja occidentalis (Larch tree)	22	2.5	Good	Good	Good central leader	2.5	Private	Preserve
34	Thuja occidentalis (Larch tree)	31	2.5	Fair	Fair	Large monotypic tree in crown; codominant leaders	2.5	Private	Preserve
35	Aster sp. (black aster)	22	4	Good	Good	Fair central leader; good shoot extension	4	Private	Injure - Proposed work inside drip line
36	Thuja occidentalis (Larch tree)	22	2	Good	Good	Decurrent crown; understorey tree	2	Private	Preserve
37	Aster sp. (black aster)	24	4	Good	Poor	Five main stems at -3m	4	Boundary	Remove - Due to proposed driveway
38	Prunus pennsylvanica (Flowering cherry)	43	4	Good	Good	Good central leader; four main stems	4	Private	Injure - Proposed work inside drip line
39	Thuja occidentalis (Larch tree)	28	3	Good	Fair	Decurrent habit; four main stems	3	Private	Preserve
40	Prunus pennsylvanica (Flowering cherry)	35	4	Fair	Poor	Decurrent habit; asymmetrical with adjacent trees	4	Private	Preserve
41	Acer glaberrimum (Norway maple)	37	5	Good	Fair	Decurrent habit; codominant crown	5	Private	Injure - Proposed work inside drip line
42	Acer glaberrimum (Norway maple)	35	3	Good	Poor	Bifurcates at -1m with included union (17 & 18cm DBH)	3	Private	Preserve
43	Acer glaberrimum (Norway maple)	17	3	Good	Fair	Columnar with adjacent trees	3	Private	Preserve
44	Prunus pennsylvanica (Flowering cherry)	14	1	Dead	Poor	Dead - EAB	1	Private	Remove - Due to condition
45	Acer glaberrimum (Norway maple)	48	7	Good	Fair	Bifurcates near base (31 & 33cm DBH); decurrent habit	7	Private	Preserve
46	Thuja occidentalis (Larch tree)	32	4	Good	Good	Good central leader	4	Private	Preserve
47	Ulmus americana (American elm)	17	2.5	Good	Fair	Three from base (13, 7 & 8cm DBH)	2.5	Private	Preserve
48	Prunus pennsylvanica (Flowering cherry)	18	2.5	Poor	Poor	EAB infestation	2.5	Private	Remove - Due to condition
49	Thuja occidentalis (Larch tree)	46	5	Good	Fair	Four stems from base (30, 24, 18 & 17cm DBH)	5	Private	Preserve
50	Thuja occidentalis (Larch tree)	29	2	Good	Good	Fair central leader	2	Private	Preserve
51	Acer glaberrimum (Norway maple)	155	10	Good	Fair	50 main stems at -3.4m with included bark; good leaf set	10	Private	Preserve
52	Thuja occidentalis (Larch tree)	13	1	Good	Fair	Suppressed & columnar crown	1	Private	Preserve
53	Thuja occidentalis (Larch tree)	21	2	Good	Fair	Two main stems (14 & 13cm DBH); suppressed & columnar crown	2	Private	Preserve
54	Prunus pennsylvanica (Flowering cherry)	21	4	Fair	Fair	Multi-stem from base (14, 13 & 8cm DBH); moderate deadwood	4	Private	Preserve
55	Thuja occidentalis (Larch tree)	50	6	Good	Good	Good central leader; dominant crown	6	Neighbor	Preserve

Tree Protection Comments:

- It is the responsibility of the site supervisor to inspect the condition of the tree protection measures outlined on the tree protection plan each morning. If disturbance to the barriers is observed, it is to be repaired prior to work commencing on site that day.
- Tree protection barriers must remain in place and in good condition during demolition, construction and/or site disturbance, including landscaping, and must not be altered, moved or removed until authorized by Urban Forestry.
- During construction, if any tree roots are exposed or disturbed outside the tree protection zone (TPZ), care is to be taken to minimize their disturbance. If roots must be removed outside the TPZ, they are to be cleanly pruned. Tearing roots hinders wound closure and can increase risk of disease and root rot.
- All landscape and construction work within the Minimum Tree Protection Zones (MTPZs) of affected trees must be completed using hand tools only.
- Trees 38-41, 45-50 & 54 were located by the arborist.
- At the completion of the project, the Forestry Department is to be notified prior to removal of the tree protection fencing on the site. With approval, the fencing may be dismantled.
- Tree protection comments were added by the arborist to a site plan created by JD. Barnes Ltd. Ref# 22-16-089-00 dated October 31, 2022.

**Tree Protection Plan
Appendix III**
237 Anne St.
Niagara-on-the-Lake, ON.

Legend:

- Tree Removal
- 4' Tall Plywood Tree Protection Fencing
- 4' Tall Snow Fence Tree Protection Fencing
- Tree Protection Zone
- Site Access Route
- Material Storage Area
- Horizontal Tree Protection
- Air spade location
- Replacement Tree

Prepared For:

7838 Twenty Rd. S.
Smithville, ON
L0R 2A0

905-957-5663
info@arborwood.ca

Prepared By:

2309 Mountain Grove Ave.
Burlington, ON
L7P 2H8

647-884-7716
contact@urbanarboretum.ca

Scale: 1 - 200

Drawn By: Kyle Berwick

Last Revised: May 23, 2023

Date Created: Dec 12, 2022

Drawing No. **TPP1**