

**SKETCH**  
PREPARED FOR SEVERANCE APPLICATION

PART OF LOT 102

GEOGRAPHIC TOWNSHIP OF NIAGARA  
IN THE  
**TOWN OF NIAGARA-ON-THE-LAKE**  
REGIONAL MUNICIPALITY OF NIAGARA  
SCALE 1 : 5,000 (METRIC)

**NOTE:** THIS SKETCH IS PREPARED FROM COMPILED AND CALCULATED INFORMATION, NOT FROM AN ACTUAL SURVEY.  
DO NOT SCALE FROM THIS DRAWING.  
ALL MEASUREMENTS ARE +/- MEASUREMENTS.

**CAUTION:** THIS IS NOT A PLAN OF SURVEY AND SHALL NOT BE USED EXCEPT FOR THE PURPOSE INDICATED IN THE TITLE BLOCK.

*"THIS IS NOT AN ORIGINAL COPY UNLESS EMBOSSED WITH SEAL."*

© COPYRIGHT 2022  
THE REPRODUCTION, ALTERATION OR USE OF THIS SKETCH, IN WHOLE OR IN PART WITHOUT THE EXPRESS WRITTEN PERMISSION OF CHAMBERS AND ASSOCIATES SURVEYING LTD. IS STRICTLY PROHIBITED.

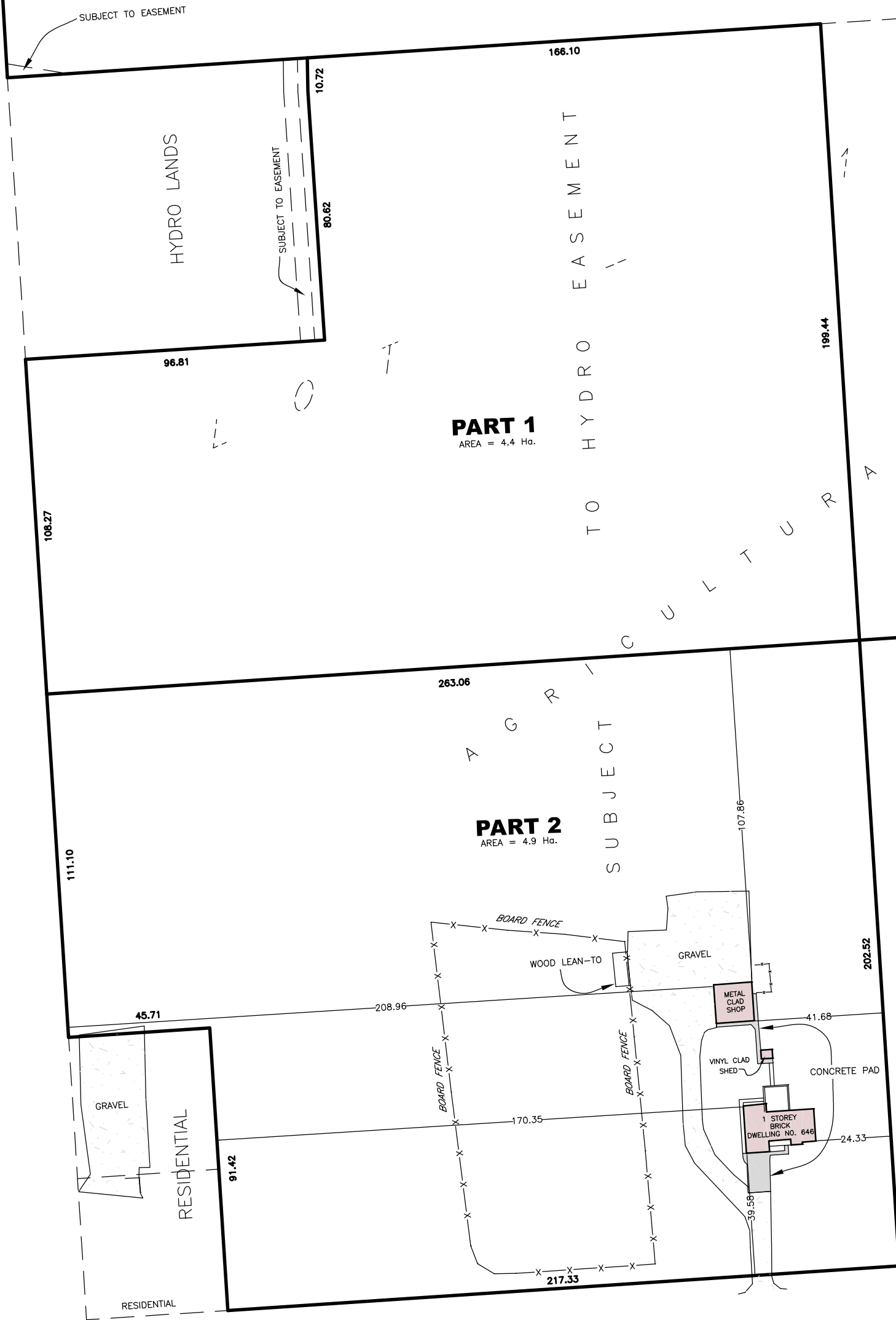
JULY 7, 2022 *Don Chambers*  
DATE DONALD G. CHAMBERS, B. Sc., O.L.S.

**CHAMBERS AND ASSOCIATES SURVEYING LTD**  
12 THOROLD ROAD EAST (905) 735-7841 / 735-7844  
WELLAND ONTARIO FAX (905) 735-7333  
L3C 3T2 www.casl-surveying.com  
DWG 97174-6\_SEV FILE 97-174-6

NOTE: PART 1 TO BE SEVERED FROM PART 2 AND ADDED TO PART 3

CONCESSION 5 ROAD

LINE 7 ROAD



**SKETCH**

PREPARED FOR SEVERANCE APPLICATION

PART OF LOT 102

GEOGRAPHIC TOWNSHIP OF NIAGARA  
IN THE

**TOWN OF NIAGARA-ON-THE-LAKE**

REGIONAL MUNICIPALITY OF NIAGARA

SCALE 1 : 1500 (METRIC)



NOTE: THIS SKETCH IS PREPARED FROM COMPILED AND CALCULATED INFORMATION, NOT FROM AN ACTUAL SURVEY.

DO NOT SCALE FROM THIS DRAWING.  
ALL MEASUREMENTS ARE +/- MEASUREMENTS.

CAUTION: THIS IS NOT A PLAN OF SURVEY AND SHALL NOT BE USED EXCEPT FOR THE PURPOSE INDICATED IN THE TITLE BLOCK.

"THIS IS NOT AN ORIGINAL COPY UNLESS EMBOSSED WITH SEAL."

© COPYRIGHT 2022

THE REPRODUCTION, ALTERATION OR USE OF THIS SKETCH, IN WHOLE OR IN PART WITHOUT THE EXPRESS WRITTEN PERMISSION OF CHAMBERS AND ASSOCIATES SURVEYING LTD. IS STRICTLY PROHIBITED.

JULY 7, 2022  
DATE

*Don Chambers*  
DONALD G. CHAMBERS, B. Sc., O.L.S.

**CHAMBERS AND ASSOCIATES SURVEYING LTD**

12 THOROLD ROAD EAST  
WELLAND ONTARIO  
L3C 3T2

(905) 735-7841 / 735-7844  
FAX (905) 735-7333  
www.casl-surveying.com

DWG 97174-6\_SEV

FILE 97-174-6