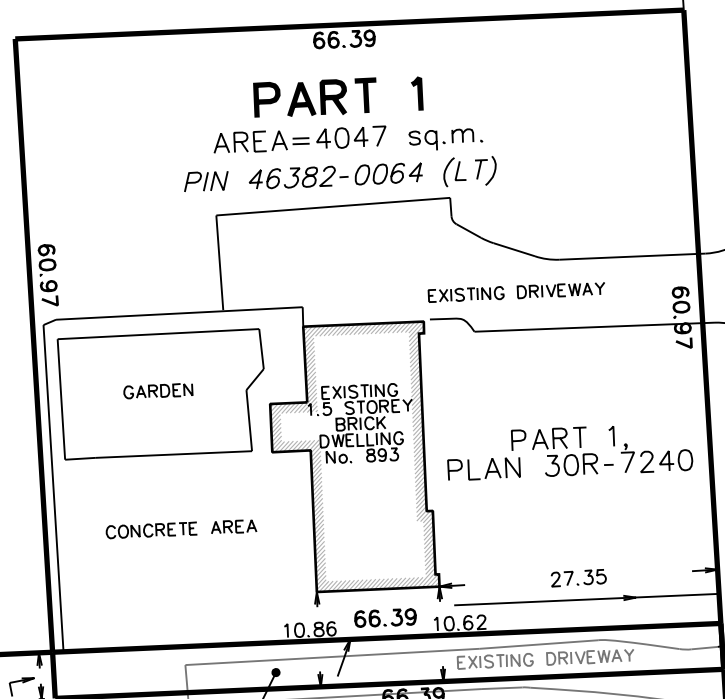


"AGRICULTURAL"

PIN 46382-0063 (LT)



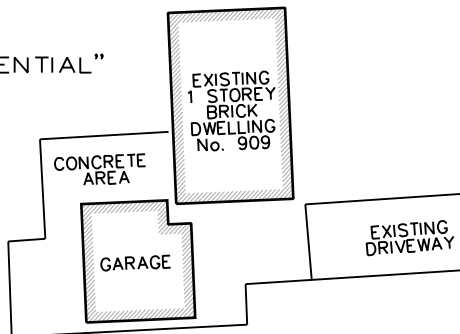
PART 2
AREA=304 sq.m.

"VINEYARD"

PART 3
AREA = 19943 sq.m.
PIN 46382-0065 (LT)

"AGRICULTURAL"

"RESIDENTIAL"



"AGRICULTURAL"

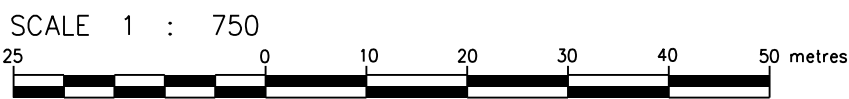
PIN 46382-0066 (LT)

"AGRICULTURAL"

(COMMONLY KNOWN AS) **LINE 3 ROAD** (MUNICIPAL ROAD - 20.12 WIDE)
(ROAD ALLOWANCE BETWEEN TOWNSHIP LOTS 75 AND 76)
PIN 46382-0054 (LT)

NOTE: THIS SKETCH IS NOT A PLAN OF SURVEY
SKETCH FOR PLANNING PURPOSES ONLY

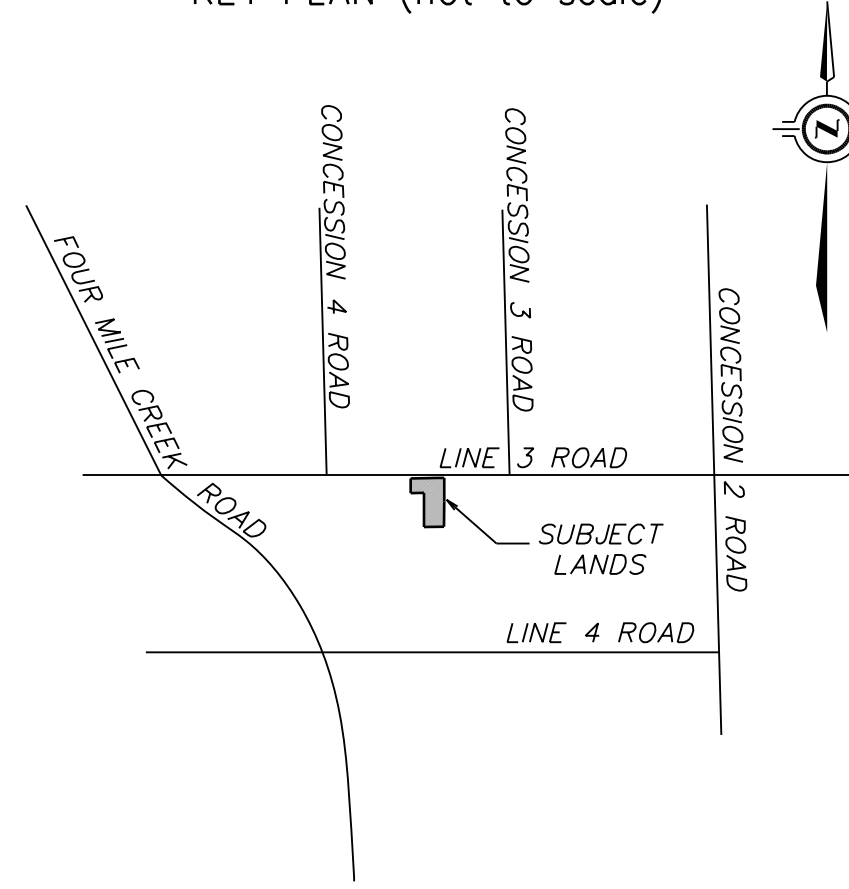
909 AND 893 LINE 3 ROAD
TOWN OF NIAGARA-ON-THE-LAKE
REGIONAL MUNICIPALITY OF NIAGARA



J.D. BARNES LIMITED
© COPYRIGHT 2021

METRIC NOTE
DISTANCES SHOWN ON THIS PLAN ARE IN METRES AND CAN BE
CONVERTED TO FEET BY DIVIDING BY 0.3048

KEY PLAN (not to scale)



TOWN OF NIAGARA-ON-THE-LAKE

LEGAL DESCRIPTION

PART OF TOWNSHIP LOT 76.
BOUNDARY INFORMATION HAS BEEN COMPILED FROM AVAILABLE RECORDS AND HAS NOT BEEN VERIFIED BY ACTUAL FIELD MEASUREMENTS. THIS IS NOT A PLAN OF SURVEY.
SOME FEATURES SHOWN ON THIS SKETCH HAVE BEEN DIGITIZED FROM AERIAL PHOTOGRAPHY - LOCATION IS APPROXIMATE.

DECEMBER 13, 2021
DATE

Dasha Page
DASHA PAGE
ONTARIO LAND SURVEYOR

CAUTION

- (A) THIS IS NOT A PLAN OF SURVEY AND SHALL NOT BE USED EXCEPT FOR THE PURPOSE INDICATED IN THE TITLE BLOCK.
- (B) THIS SKETCH IS PROTECTED BY COPYRIGHT.

J.D. BARNES LIMITED
SURVEYING MAPPING GIS
LAND INFORMATION SPECIALISTS
4318 PORTAGE ROAD - UNIT 2, NIAGARA FALLS, ON L2E 6A4
T: (905) 358-3693 F: (905) 358-6224 www.jdbarnes.com

VK	DRAWN
DP	CHECKED
12/13/21	DATED
12/13/21	Ref. No.
21-16-292-00	PLOTTED

G:\2021\21-16-292-00\Drawing\21-16-292-00 LDC.dgn